

Weekly Farm Summary 23rd December 2022

Farm-system impacts of: Kale vs Fodder beet for winter AND Reducing N loss to water by 30%.

	Std Brassica/ Baleage Pink	LI Baleage Blue	Std Fodder beet Green	LI Fodder beet Yellow
Farmlet area including wintering	82.7	60.9	82.7	60.9
Peak cow numbers	222	137	221	135
Milking Area	73.8	55.1	73.8	55.1
Current Herd size (cows)	221	137	217	135
Pasture Stocking rate (current)	3.0	2.4	2.9	2.4
Winter Feed Milking supplement	Swede/Bale	Baleage	Beet 80 days	Beet 60 days
	In-shed feed 500kg/cow + baleage as required			
Average Cover	2584	2553	2544	2602
Average Growth	71	62	67	62
Target rotation length	23	27	23	28
Last week act rotation (d)	23	25	23	22
Last week supp (kg DM/cow)	1.5	1.4	2.1	1.1
Average BCS	4.4	4.5	4.4	4.5
% of herd on priority feeding	7%	5%	5%	2%
Milk yield (L/cow)	21.4	22.5	21.2	21.5
Milk yield (kgMS/cow)	1.90	2.01	1.94	1.94
Nitrogen Cap kgN/ha/yr	180	50	180	50
% Nitrogen used (kgN/ha) YTD	49% (89kg)	60% (30kg)	47% (85kg)	58% (29kg)
Effluent N YTD	8	8	8	5
Profit/ha comp to Control	\$0	\$0	\$0	\$0
YTD supp (kg DM/cow)	421	273	374	306
YTD MS/cow	238	251	236	249
YTD MS/milk ha (YTD MS/farm ha)	715 (638)	623 (564)	705 (630)	610 (552)

Business Area	Current Status
Milk Production	Production has been variable this week for all herds. Likely contributing factors are being a bit tight in some paddocks, a minor issue with in-shed feeding and some poorer quality paddocks. Also changed morning milking start time to 6.30 am so a change of routine. Still well ahead of season to date compared with last 4 years.
Pasture & Feed	Some seed head still present but getting less due to strategic mowing. Pasture still overestimated by plate meter due to hardened stems in the base presence of seedhead. Continue to use Visual assessment as well for feed allocation. Started 36 hr grazings for the LI herds, operationally going well, cows quite settled. Growth rates continue to be higher than demand, paddocks identified for baleage pre-xmas.
Animals	No significant animal health issues to report. 2022 born calves at home were weighed, drenched, and had Lepto before going out to grazing. Their average weight was 114kg, ADG was 0.83 kgs compared to the older mob already at grazing was 129kg, ADG 0.71 kg. Mating continues to go well, using short gestation for the last 3.5 weeks. Bulls running with the 2021 born heifers to be removed this week.
Environment	Continuing with round 4 (25 kg N/ha) of nitrogen fertiliser for the Std farmlets. Round 3 (12.5 kg N/ha) for LI farmlets almost complete.
Wintering	Planning for Winter 2023 continues as Brassica/Baleage herd needs paddocks due to delay in on-farm infrastructure. Poorly established new grass paddock plan is to "nip off" and patch in the autumn, whilst protecting well established sections.
People	Team is scheduled to each have time off over the Holiday period.
Research	Planning for 2023 field days underway

Milk Production

Principles of Milk Production management this week

Milk Production	Up's and downs this week due to some inconsistent pasture quality and quantity and issues with in-shed feeding from one silo. Have dropped below 2 kg MS/cow/day for all herds except Lower Impact Baleage herd. Continue to focus on pasture quality to maintain production levels and minimize the decline.
Key Influences on Milk Production	Production changes continue to be more likely driven by pasture quality at this point in the season. In-shed feeding only to provide minerals. Increase in BCS suggests energy is also being partitioned to BCS gain.
Cow Management	Milking TAD, but with a later start time of 6:30am. Continuing to manage lighter BCS cows below 4 on OAD milking with priority in-shed feeding. Latest BCS is 4.4 for each Standard herd and 4.5 for each of the Lower Impact herds

	Std brassica/baleage Pink	LI Baleage Blue	Std Fodder beet Green	LI Fodder beet Yellow
kg Milksolids per cow this week / (last week)	1.90 (1.96)	2.01 (2.06)	1.94 (2.00)	1.94 (1.97)
kg Milksolids per ha this year / (same time last year)	715 (638)	623 (564)	705 (630)	610 (552)
% Var kg Milksolids per ha Season per ha to date vs last season to date	11.4	8.7	16.6	13.0
No. of Cows needing preferential feeding (% herd)	15 (7)	7 (5)	11 (5)	3 (2)
Animal Health peculiarities	None	None	None	None

Milk Production

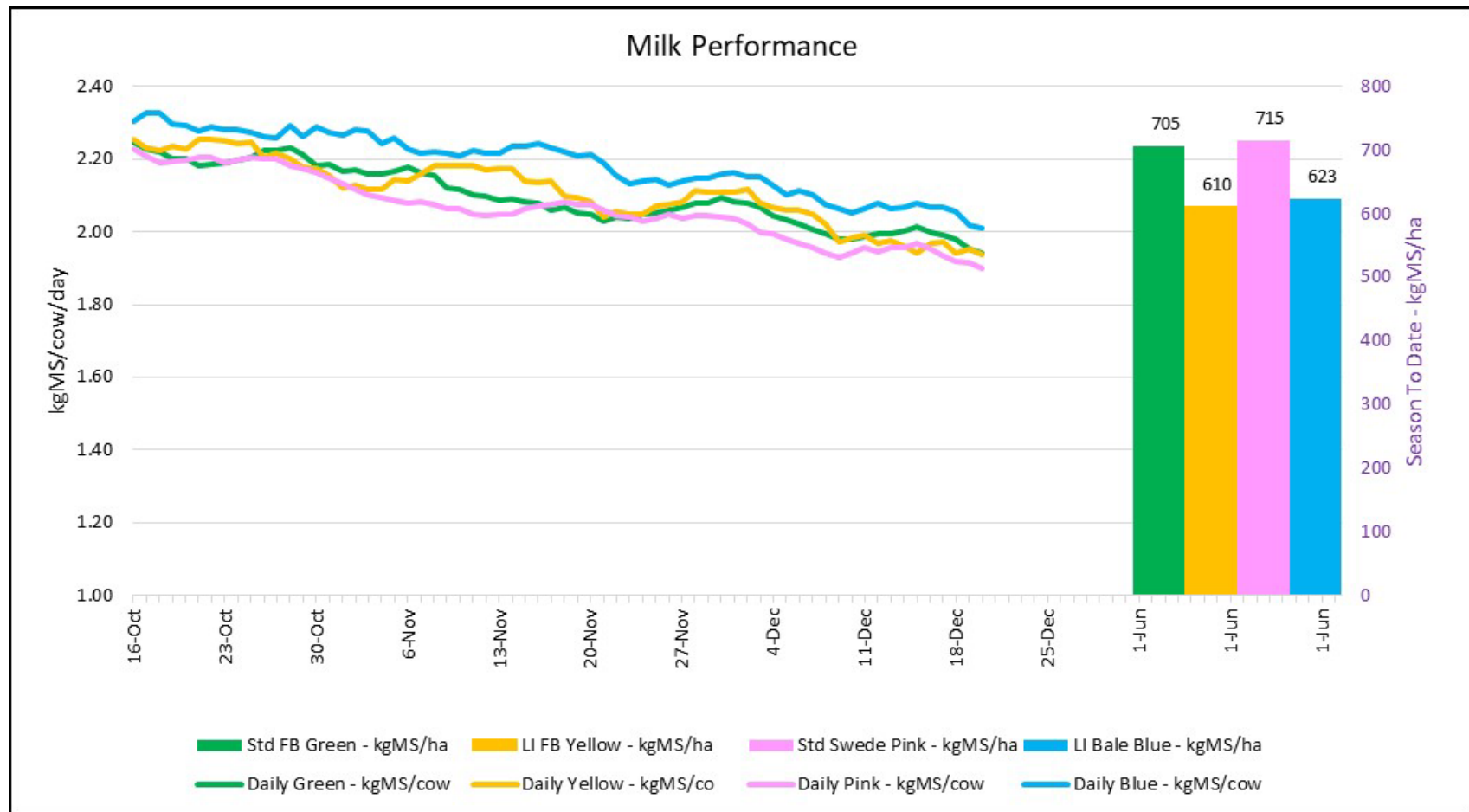


Figure 1: Milk solids production (/cow/day) plus cumulative season production (kg/ha)

Body condition score

As at 13th December 2022 – updated fortnightly

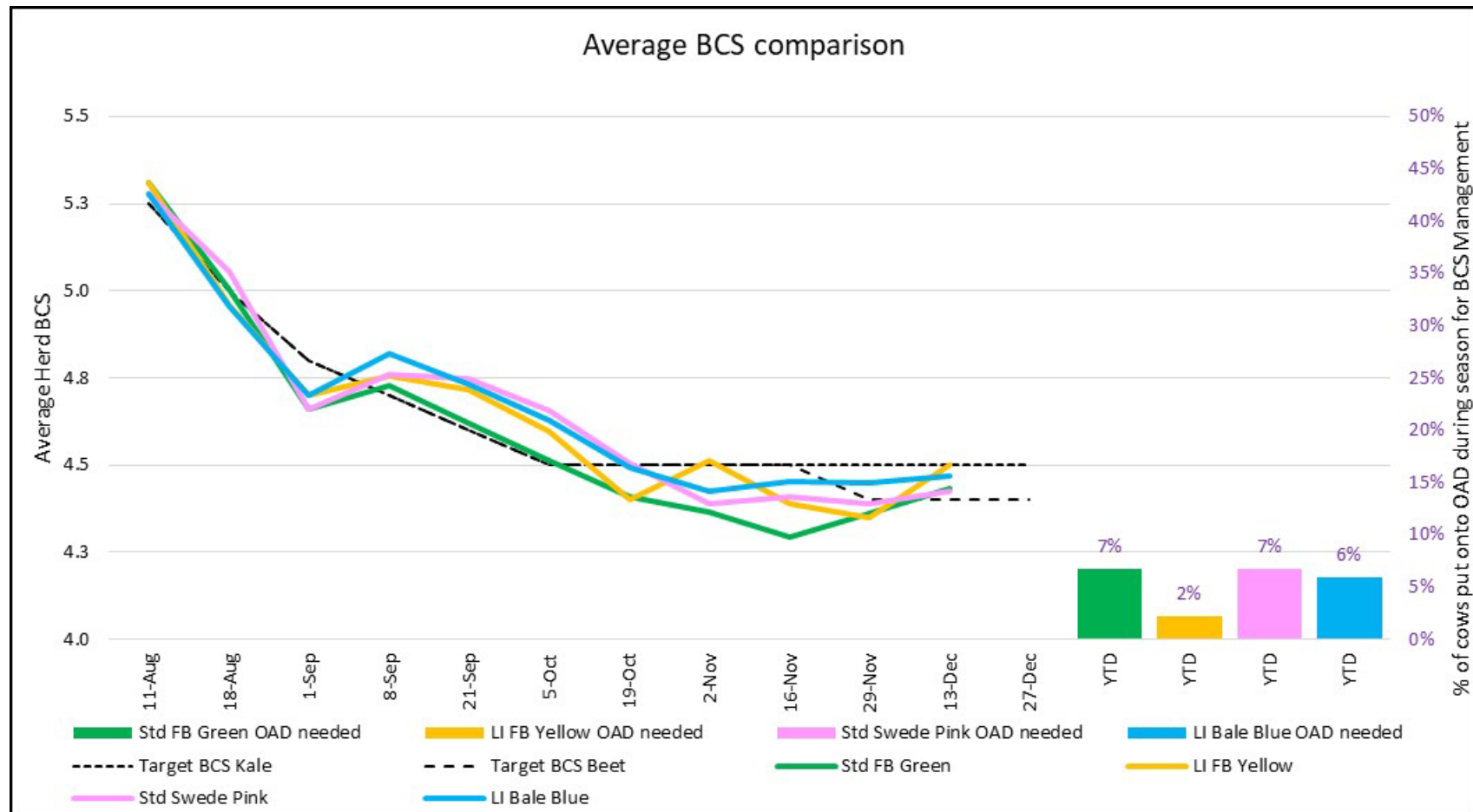


Figure 2: Fortnightly BCS trends and percentage of the herd requiring OAD milking season to date

Feed

Principles of Feed management this week

Feed Quality	The presence of seed head is still evident, but not to the same degree as previous weeks. Pasture management strategy has worked well with the farm continuing to look very tidy. Most paddocks have excellent colour and clover growth is strong.
Growth Rate Management	Remaining on our pasture quality management strategy of stepping over any paddocks greater than pre-graze target for baleage and topping to meet residual. Reassessing paddocks towards the end of the 7-day walking interval and adjusting grazing order accordingly. Minimizing supplementary feeding to reduce the risk of substitution, knowing that cows reduce grazing time by 20 minutes per kg of supplement consumed.
Nitrogen Strategy	Std herds on 4 th round of Nitrogen applications (25 kg N/ha), Third round applications (12.5 kg N/ha) are almost complete. New grass paddocks will receive N applications after their first grazing

	Std brassica/baleage Pink	LI Baleage Blue	Std Fodder beet Green	LI Fodder beet Yellow
Quantity	Surplus	Surplus	Surplus	Surplus
Quality	Some stem elongation stalky base & Seed head also good colour and amounts of clover	Some stem elongation stalky base & Seed head also good colour and amounts of clover	Some stem elongation stalky base & Seed head also good colour and amounts of clover	Some stem elongation stalky base & Seed head also good colour and amounts of clover
Surplus Management	X 3 pdk to conserve	X 4 pdk to conserve	X 3 pdk to conserve	X 3 pdk to conserve
Deficit Management - kgDM (diff from last week)	1.0 (-0.5)	1.0 (-0.4)	1.0 (-1.1)	1.0 (-0.1)
Target Rotation Length (days)	23	27	23	28

Feed

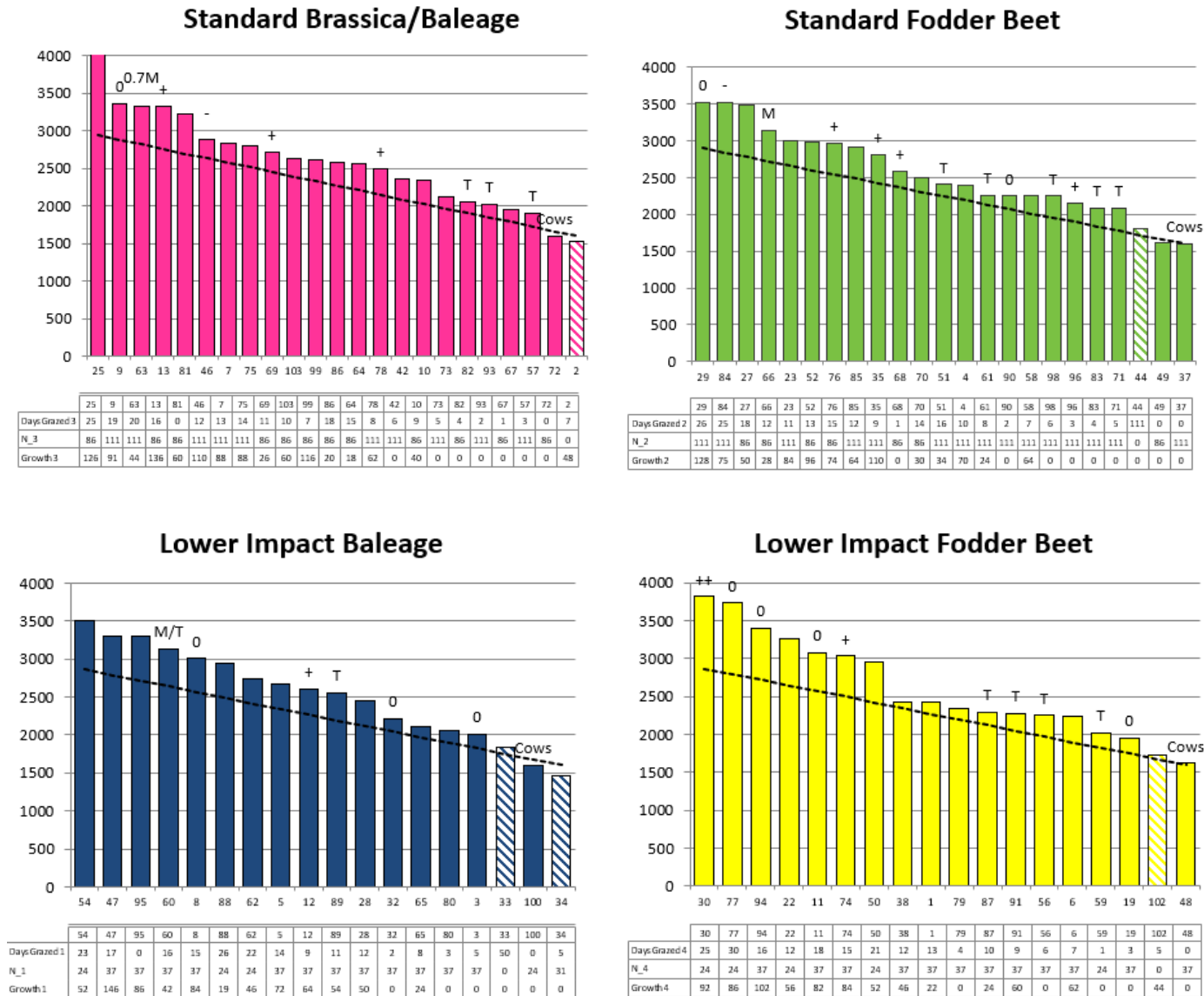


Figure 3: Feed Wedges as of 20th December 2022

Feed

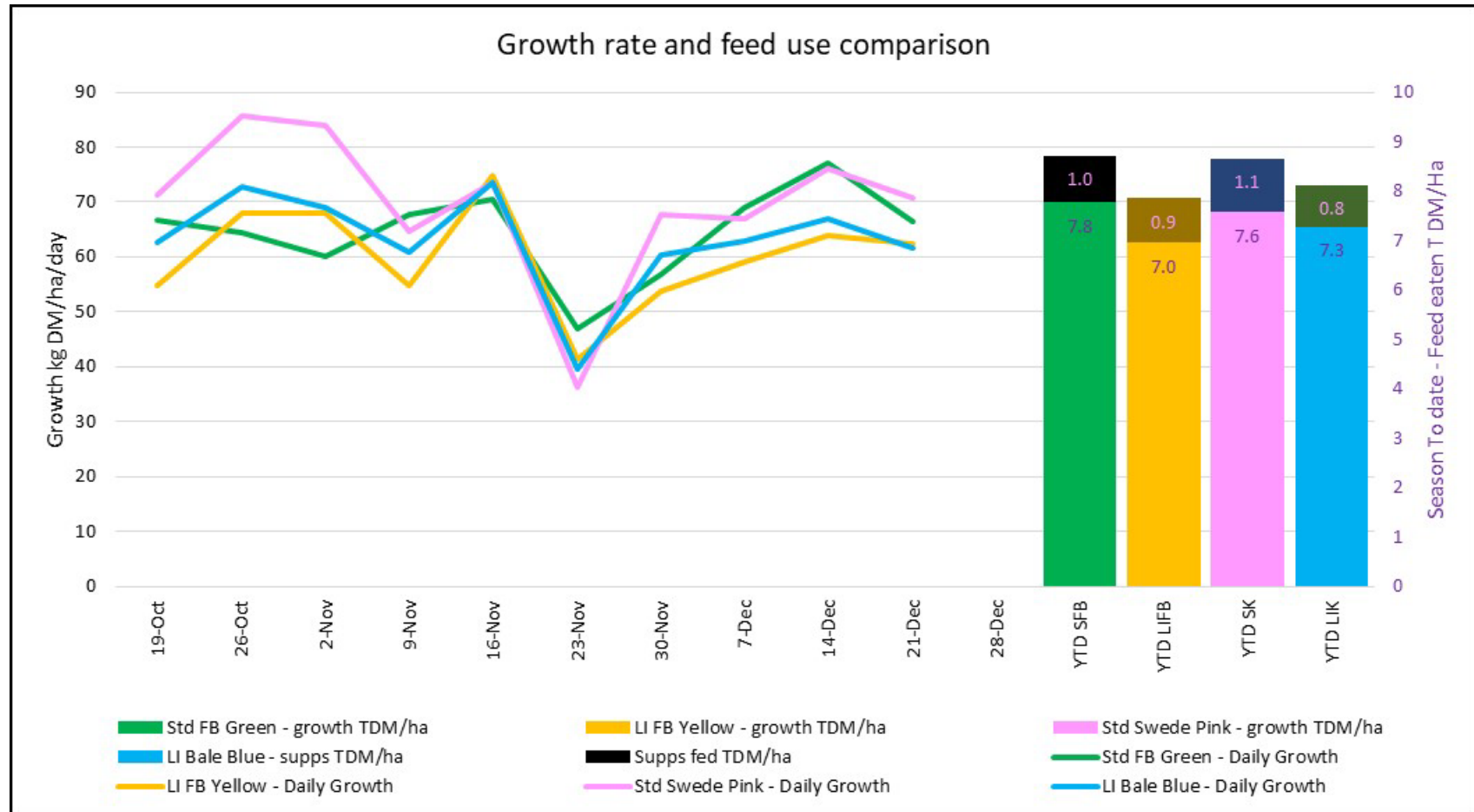


Figure 4: Weekly growth rate (kgDM/ha/d) & YTD feed use

Farm Photos



Photo 1: Collecting Effluent Sample



Photo 2: Weed burden in minimum till "New Grass" paddock 40. (Ex-Fodder Beet)

Happy Holidays from the Team



Photo 3: Cow "Beloved" aka Pet



Photo 4: Cow "Violet"



Photo 5: Cow "Ash"



Photo 6: Cow "Small Speckle"