

Weekly Farm Summary 24 May 2023

Farm-system impacts of: Bales/Brassica vs Beet for winter AND Reducing N loss to water by 30%.

	Std Swede Pink	LI Bale Blue	Std FB Green	LI FB Yellow
Farmlet area including wintering	82.7	60.9	82.7	60.9
Peak cow numbers	222	137	221	135
Milking Area	74.0	55.1	76.9	55.1
Current Herd size (cows)	135	105	158	95
Pasture Stocking rate (current)	1.8	1.9	2.1	1.7
Winter Feed Milking supplement	Swede/Bale	Baleage	Beet 80 days	Beet 60 days
	In-shed feed 500kg/cow + silage as required			
Average Cover	2200	2146	2148	2134
Average Growth	34	32	29	33
Target rotation length	50	51	50	57
Last week act rotation (d)	33	20	29	32
Last week supp (kg DM/cow)	0.7	0.9	0.8	0.9
Average BCS	4.6	4.5	4.5	4.6
% of herd on priority feeding				
% dried off	23%	18%	20%	11%
Milk yield (L/cow)	10.0	11.1	10.2	10.4
Milk yield (kgMS/cow)	1.17	1.27	1.20	1.23
Nitrogen Cap kgN/ha/yr	180	50	180	50
% Nitrogen used (kgN/ha) YTD	81% (145kg)	110% (55kg)	84% (151kg)	106% (53kg)
Effluent N YTD	17	22	23	20
Profit/ha vs Pink herd	\$0	-\$504	-\$526	-\$491
YTD supp (kg DM/cow)	864	749	776	747
YTD MS/cow	464	489	470	488
YTD MS/milk ha (YTD MS/farm ha)	1392 (1372)	1217 (1198)	1352 (1332)	1195 (1174)
Business Area	Current Status			
Milk Production	The 2022-23 season is officially over for us. We did consider continuing milking for a few more days given our current pasture supply, however drying off was already booked in with the vets so we continued as planned.			
Pasture & Feed	With growth still around 30 kg DM/day for the last week we are still working on reducing APC for all farmlets. Early dried off cows and heifers have been used to take the tops out of high mass pastures and the new dries will follow to clean them up. Minimal inshed feeding across the farmlets this week. One mob of Std Baleage cows will be kept on platform until they have eaten through the remaining high mass paddocks			
Animals	BCS data from late last week indicated that our early dry cows have not increased in BCS as much as we would have liked despite being offered ample high-quality pasture. We have narrowed the range with mixed age cows averaging 4.5 and heifers 5.4.			
Environment	Effluent is still being applied when conditions allow			
Wintering	Cows were drafted into their wintering mobs at dry off, so they don't have to come back through the yards any time soon. LI Baleage cows have gone straight into their wintering paddocks being offered 10 kg DM baleage for the first few days. Fodder beet herds will move into their paddocks Sun/Mon and the first group of Std Baleage mobs will head to the support block on Monday.			
People	An announcement is pending on the appointment of a new General Manager			
Research	AgResearch have been on site this week collecting soil samples for soil carbon analysis			

Milk Production

Principles of Milk Production management this week

Milk Production	This week saw a tail off in milk production as we focused on setting paddocks up for next season. Fodder beet herds were dried off on the 25 th and baleage herds on the 26 th May.
Key Influences on Milk Production	Stage of lactation and feeding levels
Cow Management	Light cows that were dried off early to gain BCS have been following the milkers but also eating through some of the high mass paddocks across the farmlets. While the range in BCS in these animals has reduced they haven't gained as much BCS as we had hoped.

	Std brassica/baleage Pink	LI Baleage Blue	Std Fodder beet Green	LI Fodder beet Yellow
kg Milksolids per cow this week / (last week)	1.17 (1.31)	1.27 (1.35)	1.20 (1.30)	1.23 (1.29)
kg Milksolids per ha this year / (same time last year)	1392 (1372)	1217 (1198)	1352 (1332)	1195 (1174)
% Var kg Milksolids per ha Season per ha to date vs last season to date	8.5%	9.8%	13.3%	13.4%
Animal Health peculiarities	None	None	None	None

Milk Production

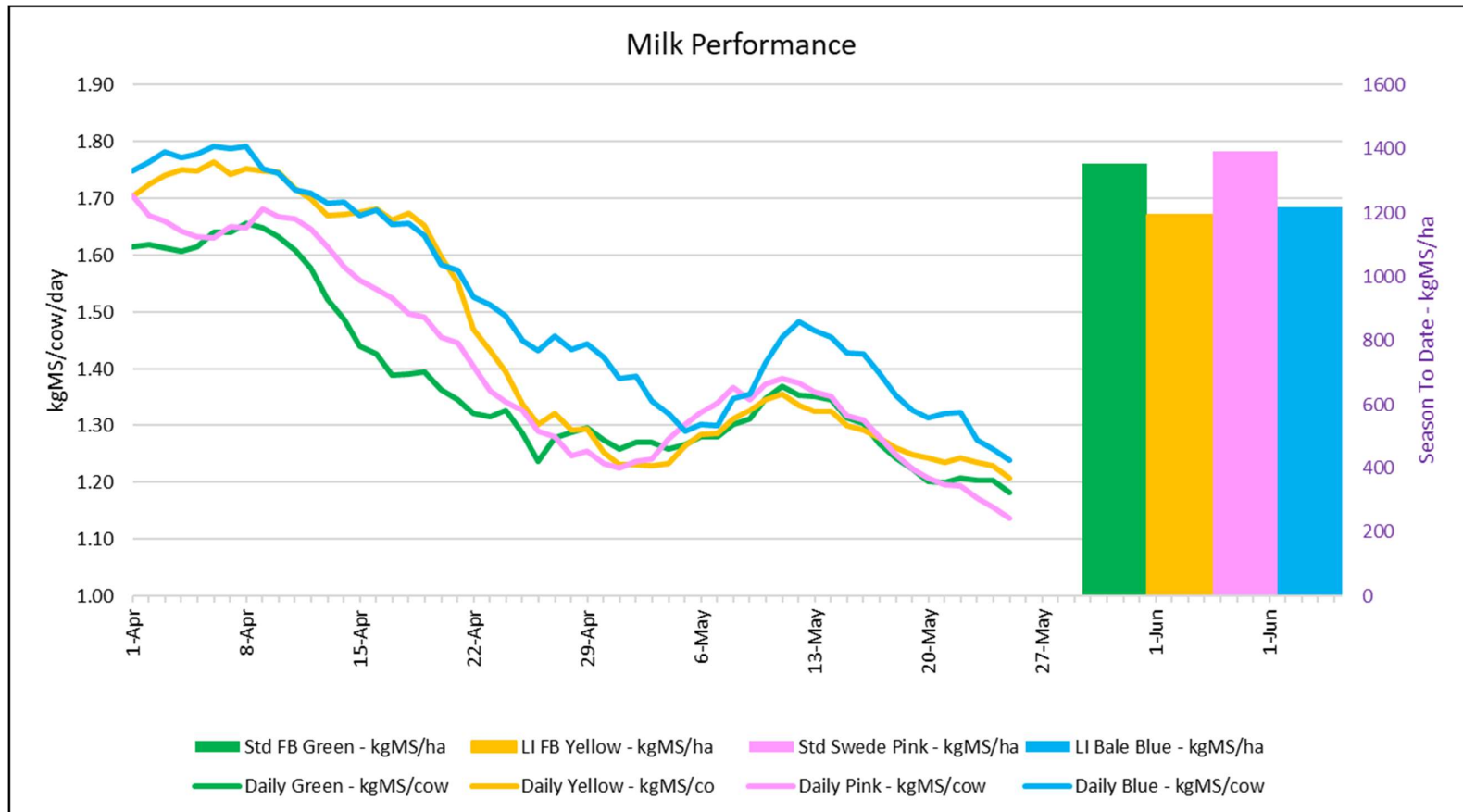


Figure 1: Milk solids production (cow/day) plus cumulative season production (kg/ha) at 23rd May 2023

Feed

Principles of Feed management this week

Feed Quality	Pastures are low in DM but great quality. Growth in the new grasses continues to be high with lots of plantain. Interesting there is still a lot of clover about.
Growth Rate Management	We have managed to pull 200 kg DM/ha off average pasture cover in the last week and are now utilizing dry cows and heifers to take the top out of high mass pastures. One mob that is to be wintered on baleage at the support block will stay on the milking platform a bit longer to clean up the last few paddocks.
Nitrogen Strategy	Last application for the 2023/2024 season was the beginning of April 2023

	Std brassica/baleage Pink	LI Baleage Blue	Std Fodder beet Green	LI Fodder beet Yellow
Quantity	APC decreasing	APC decreasing	APC decreasing	APC holding
Quality	Maintaining	Maintaining	Maintaining	Maintaining
Surplus Management	Dry cows & heifers	Dry cows & heifers	Dry cows & heifers	Dry cows & heifers
Supplement for coming week- kgDM (diff from last week)	0.7 (-0.1)	0.6 (-0.6)	0.8 (-0.6)	0.9 (-0.5)
Target Rotation Length (days)	50	54	52	57

Feed

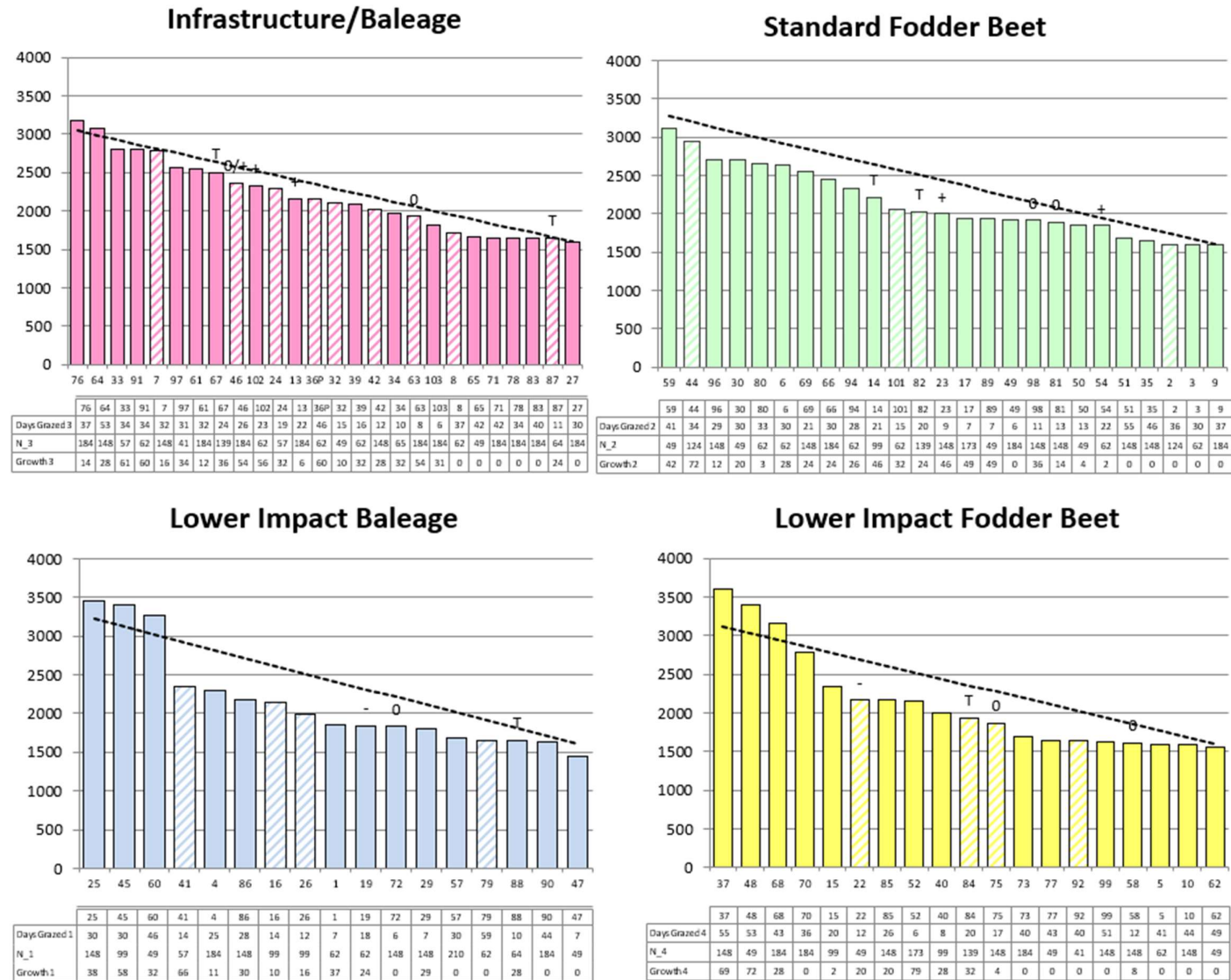


Figure 2: New Farmlet Feed Wedges as of 23 May 2023

Feed

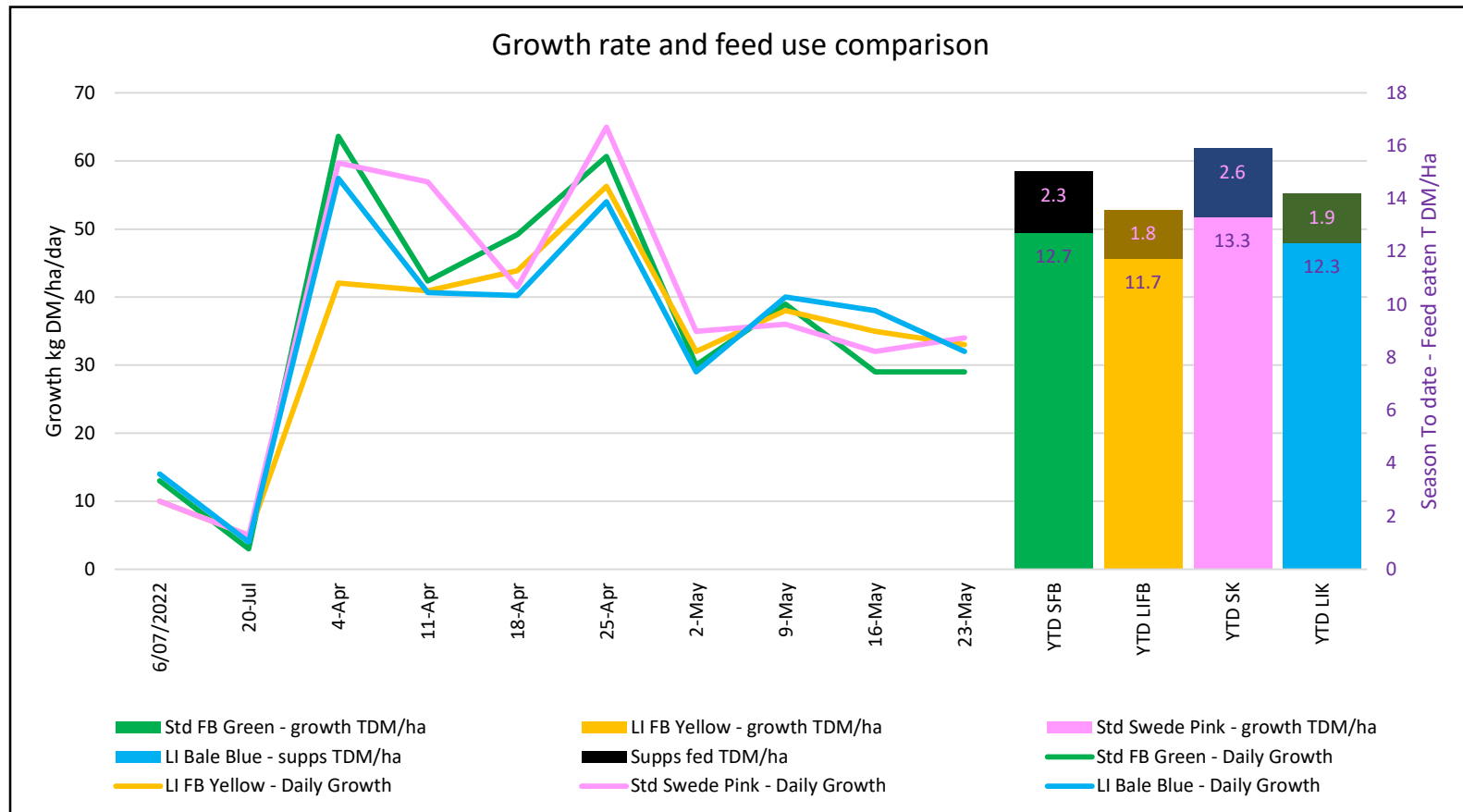


Figure 4: Weekly pasture growth rate at 23 May 2023 and year to date total feed eaten

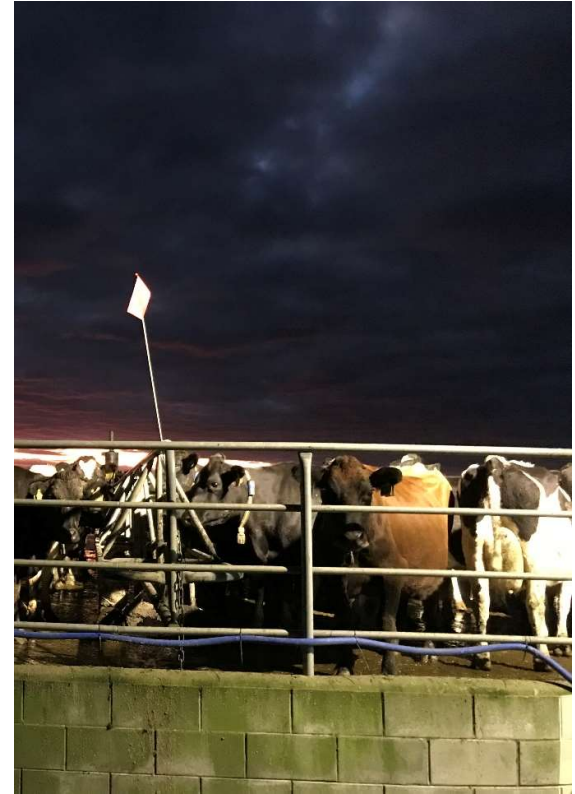
The week in pictures



Dry cow therapy for the fodder beet herds



Heifers eating lifted fodder beet



Stormy skies on farm this week

The week in pictures

Std Infrastructure - Pink				
Cow Tag	Dry off treatment	Current Mob	Winter Mob	Winter Paddock
10	Teatseal	Dries	Infrast. Heif/light	Pdk R3
11	Teatseal	Milkers	Infrast. Fats	Pdk R12
14	COMBO	Milkers	Infrast. Fats	Pdk R12
15	COMBO	Milkers	Infrast. Fats	Pdk R12
18	Teatseal	Milkers	Infrast. Fats	Pdk R12
20	COMBO	Milkers	Infrast. Fats	Pdk R12
30	Teatseal	Milkers	Infrast. Fats	Pdk R12
31	COMBO	Milkers	Infrast. Fats	Pdk R12
32	Teatseal	Milkers	Infrast. Fats	Pdk R12
39	COMBO	Milkers	Infrast. Fats	Pdk R12
40	Teatseal	Milkers	Infrast. Fats	Pdk R12
53	Teatseal	Milkers	Infrast. Fats	Pdk R12
60	Teatseal	Milkers	Infrast. Heif/light	Pdk R3
61	COMBO	Milkers	Infrast. Fats	Pdk R12
62	Quadrant	Dries	Infrast. Fats	Pdk R12
73	Teatseal	Dries	Infrast. Heif/light	Pdk R3
76	Teatseal	Milkers	Infrast. Heif/light	Pdk R3
79	COMBO	Milkers	Infrast. Fats	Pdk R12
87	Teatseal	Milkers	Infrast. Fats	Pdk R12
90	Teatseal	Milkers	Infrast. Fats	Pdk R12
92	COMBO	Milkers	Infrast. Fats	Pdk R12
101	Teatseal	Milkers	Infrast. Fats	Pdk R12
109	COMBO	Dries	Infrast. Fats	Pdk R12
114	COMBO	Milkers	Infrast. Fats	Pdk R12
116	COMBO	Milkers	Infrast. Fats	Pdk R12
117	Teatseal	Milkers	Infrast. Fats	Pdk R12
118	Teatseal	Milkers	Infrast. Heif/light	Pdk R3
124	Teatseal	Milkers	Infrast. Fats	Pdk R12
133	COMBO	Milkers	Infrast. Fats	Pdk R12
139	COMBO	Dries	Infrast. Fats	Pdk R12
143	Teatseal	Dries	Infrast. Heif/light	Pdk R3
146	Teatseal	Milkers	Infrast. Fats	Pdk R12
152	Teatseal	Milkers	Infrast. Fats	Pdk R12
156	Teatseal	Milkers	Infrast. Fats	Pdk R12
158	Teatseal	Milkers	Infrast. Fats	Pdk R12
163	Teatseal	Milkers	Infrast. Heif/light	Pdk R3
164	COMBO	Milkers	Infrast. Heif/light	Pdk R3
175	Teatseal	Milkers	Infrast. Fats	Pdk R12
178	COMBO	Milkers	Infrast. Fats	Pdk R12
179	Teatseal	Milkers	Infrast. Fats	Pdk R12
181	Teatseal	Milkers	Infrast. Heif/light	Pdk R3
183	Teatseal	Milkers	Infrast. Heif/light	Pdk R3
184	Teatseal	Milkers	Infrast. Fats	Pdk R12

Cow shed lists for drying off and setting up wintering mobs

17-May-23		Milking transitioning	Greens	Yellows		
			155	95		
		kg DM/cow	kg DM tot	kg DM tot	Greens	Yellows
		/herd	/herd	/herd	kg Wet	kg Wet
17-May	Wed					
18-May	Thu					
19-May	Fri	1	155	95	1076	660
20-May	Sat	1	155	95	1076	660
21-May	Sun	1.5	233	143	1615	990
22-May	Mon	1.5	233	143	1615	990
23-May	Tue	2	310	190	2153	1319
24-May	Wed	2	310	190	2153	1319
25-May	Thu	2.5	388	238	2691	1649
26-May	Fri	2.5	388	238	2691	1649
27-May	Sat	3	465	285	3229	1979
28-May	Sun	3	465	285	3229	1979

Milking cow fodder beet transition plan

17-May		Early dry fodder beet amounts					
		Grellows			Heifers		
		75			92		
		kg DM/cow	kg DM tot	kg wet	kg DM/cow	kg DM tot	Mins on crop
17-May	Wed				0.5	46	15
18-May	Thu				0.5	46	15
19-May	Fri	1	75	521	1	92	20
20-May	Sat	1	75	521	1	92	20
21-May	Sun	1.5	112.5	781	1.5	138	30
22-May	Mon	1.5	112.5	781	1.5	138	30
23-May	Tue	2	150	1042	2	184	40
24-May	Wed	2	150	1042	2	184	40
25-May	Thu	2.5	187.5	1302	2.5	230	50
26-May	Fri	2.5	187.5	1302	2.5	230	50
27-May	Sat	3	225	1563	3	276	60
28-May	Sun	3	225	1563			

Dry cow and heifer fodder beet transitioning plan