

# Weekly Farm Summary 29 March 2023

Farm-system impacts of: Bales/Brassica vs Beet for winter AND Reducing N loss to water by 30%.

	Std Swede Pink	LI Bale Blue	Std FB Green	LI FB Yellow
Farmlet area including wintering	82.7	60.9	82.7	60.9
Peak cow numbers	222	137	221	135
Milking Area	73.8	55.1	73.8	55.1
Current Herd size (cows)	200	125	200	124
Pasture Stocking rate (current)	2.7	2.3	2.7	2.3
Winter Feed Milking supplement	Swede/Bale	Baleage	Beet 80 days	Beet 60 days
	In-shed feed 500kg/cow + silage as required			
Average Cover	2362	2470	2464	2423
Average Growth	59	59	65	61
Target rotation length	26	28	25	29
Last week act rotation (d)	27	29	27	30
Last week supp (kg DM/cow)	1.2	1.4	1.2	0.9
Average BCS	4.5	4.5	4.5	4.5
% of herd on priority feeding	15%	10%	18%	13%
Milk yield (L/cow)	17.1	17.5	15.9	16.3
Milk yield (kgMS/cow)	1.73	1.78	1.65	1.69
<b>Nitrogen Cap kgN/ha/yr</b>	<b>180</b>	<b>50</b>	<b>180</b>	<b>50</b>
% Nitrogen used (kgN/ha) YTD	73% (131kg)	96% (48kg)	75% (135kg)	96% (48kg)
Effluent N YTD	19	16	16	10
YTD supp (kg DM/cow)	907	546	801	559
YTD MS/cow	399	423	391	417
YTD MS/milk ha (YTD MS/farm ha)	1200 (1072)	1051 (951)	1172 (1047)	1022 (925)
<b>Business Area</b>	<b>Current Status</b>			
<b>Milk Production</b>	Production remains constant in comparison to the past few weeks, the most constant production has been all season. Milk is up 27% compared to March 2022, and cows continue to produce well on the 3-2 milking regime.			
<b>Pasture &amp; Feed</b>	Growth rates have soared this week with all farmlets averaging late 50's to 60's for the past 7 days. No silage and approximately 1 kg DM inshed feed has been fed this week. Pasture quality has improved while DM continues to be much lower than last month.			
<b>Animals</b>	Locomotion scoring identified over 50 cows that needed assessing. The team assessed 7 to 8 cows a day over the course of the week and treated cows as required. BCS assessment identified all herds increased BCS in the last fortnight except the pinks. R1's weighed & drenched - 180 kg av liveweight, gaining 0.24 kg/day since last weigh.			
<b>Environment</b>	Nitrogen applications continue this week in line with the farmlet rules. 2 Lower impact paddocks are yet to receive their last round of N, this will see the LI farmlets hit their maximum once complete.			
<b>Wintering</b>	Crops continue to flourish with the moisture in the system. Finalising paddock plans based on predicted crop yields. Calf sheds have been cleaned and prepped for calving so one less job for the team to do over winter.			
<b>People</b>	Farm is working through people and capability requirements for next season. Calf rearer position being finalised over the next few weeks.			
<b>Research</b>	Urine collection from up to 50 cows to be completed as part of the Plantain Evaluation System trial over the next few weeks			

# Milk Production

## Principles of Milk Production management this week

Milk Production	Fonterra supply has been relatively consistent for both vats over the last 8 days indicating consistent feeding and the herds settling into the reduced supplementary feed inputs. Still up on a season to date basis and compared to 2 of the last 3 seasons where we were on OAD by now, we still have enough feed in the system and body condition will allow us to stay on 3n2 for a bit longer.
Key Influences on Milk Production	We are currently seeing a typical late lactation decline although this is minimal at this stage but could change quickly if conditions get cold and wet. Feed quality and quantity is currently not limiting production.
Cow Management	Continue to have a 3'n'2 milking frequency and preferentially feeding cows the following: less than BCS 4.0 - in-shed, at BCS 3.5 – in-shed and OAD milking and greater than BCS 5.5 no in-shed feeding. Following the next full herd BCS, milking frequency will be discussed to see if/when OAD milking needs to become an option for more cows.

	Std brassica/baleage Pink	LI Baleage Blue	Std Fodder beet Green	LI Fodder beet Yellow
kg Milksolids per cow this week / (last week)	1.73 (1.60)	1.78 (1.90)	1.65 (1.64)	1.69 (1.82)
kg Milksolids per ha this year / (same time last year)	1200 (1168)	1051 (1024)	1172 (1143)	1022 (996)
% Var kg Milksolids per ha Season per ha to date vs last season to date	8.2	8.2	13.4	11.9
No. of Cows needing preferential feeding (% herd)	31 (15)	13 (10)	36 (18)	17 (13)
Animal Health peculiarities	More tender feet after the rain	More tender feet after the rain	More tender feet after the rain	More tender feet after the rain

# Milk Production

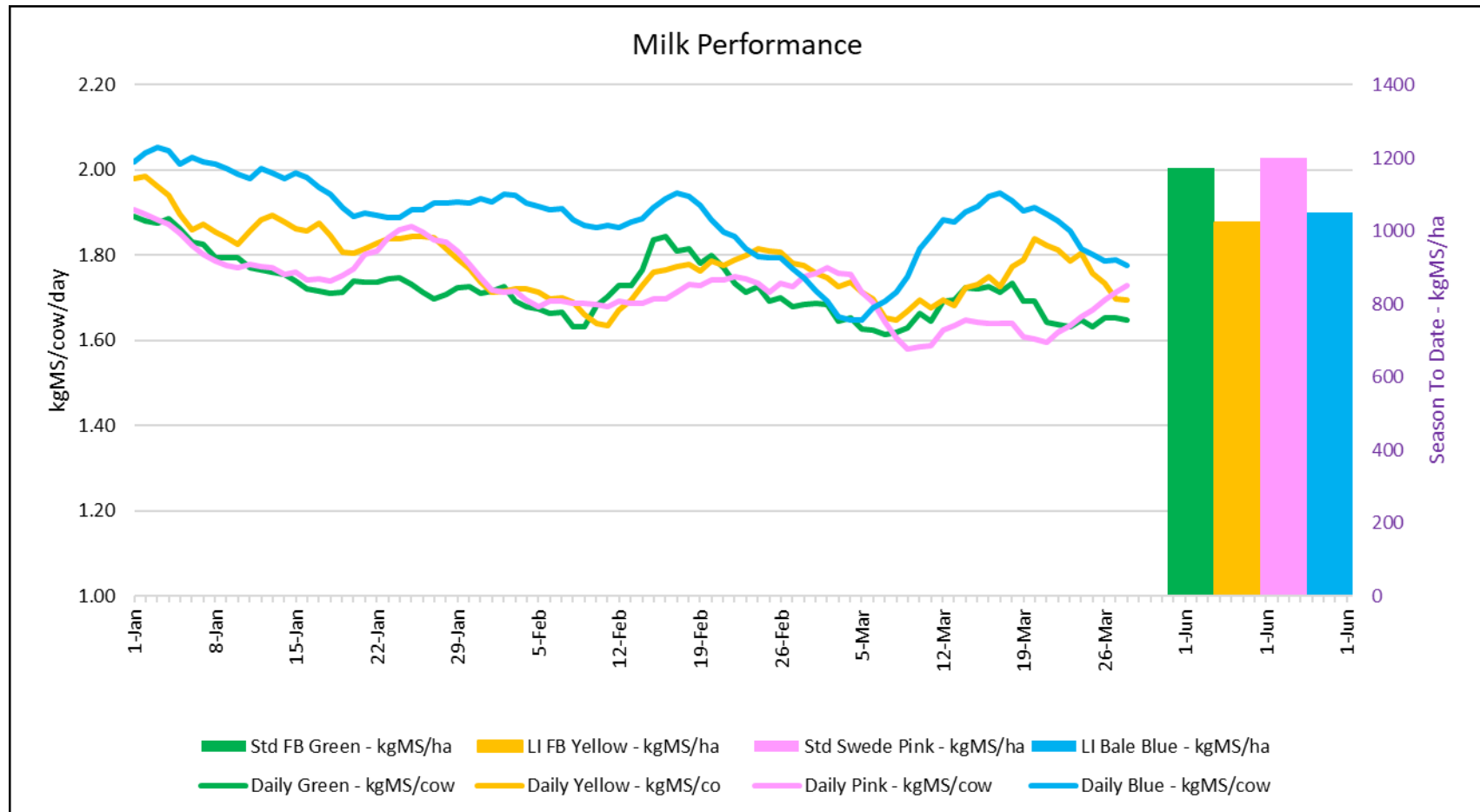


Figure 1: Milk solids production (/cow/day) plus cumulative season production (kg/ha) at 28<sup>th</sup> March 2023

# Feed

## Principles of Feed management this week

Feed Quality	Colour and texture of the grass is lovely at the moment, however with DM% dropping to 18%, the bulk in the feed is a lot less now than it was 3 weeks ago. No changes in fat to protein ratio, that is holding. Steady production showing feed quality and quantity is where it should be.
Growth Rate Management	Working through paddocks now that have been earmarked for wintering paddocks and calculations are being done to see when these paddocks need to be shut up. Once shut up this will increase our effective stocking rate so happy to bank the surplus pasture as we will need it in a couple of weeks. Springer paddocks will be shut up last.
Nitrogen Strategy	Planning to target new grass paddocks with N before 10 <sup>th</sup> April. Standard farmlets will be behind the target only getting to 160kgN rather than the 190kgN target. However, the Lower Impact's will hit target.

	Std brassica/baleage Pink	LI Baleage Blue	Std Fodder beet Green	LI Fodder beet Yellow
Quantity	Increasing	Increasing	Increasing	Increasing
Quality	Variable quality and DM%	Variable quality and DM%	Variable quality and DM%	Variable quality and DM%
Surplus Management	None	None	None	None
Deficit Management for coming week- kgDM (diff from last week)	1.2 (-0)	1.2 (-0)	1.2 (-0)	1.2 (0)
Target Rotation Length (days)	26	28	25	29

# Feed

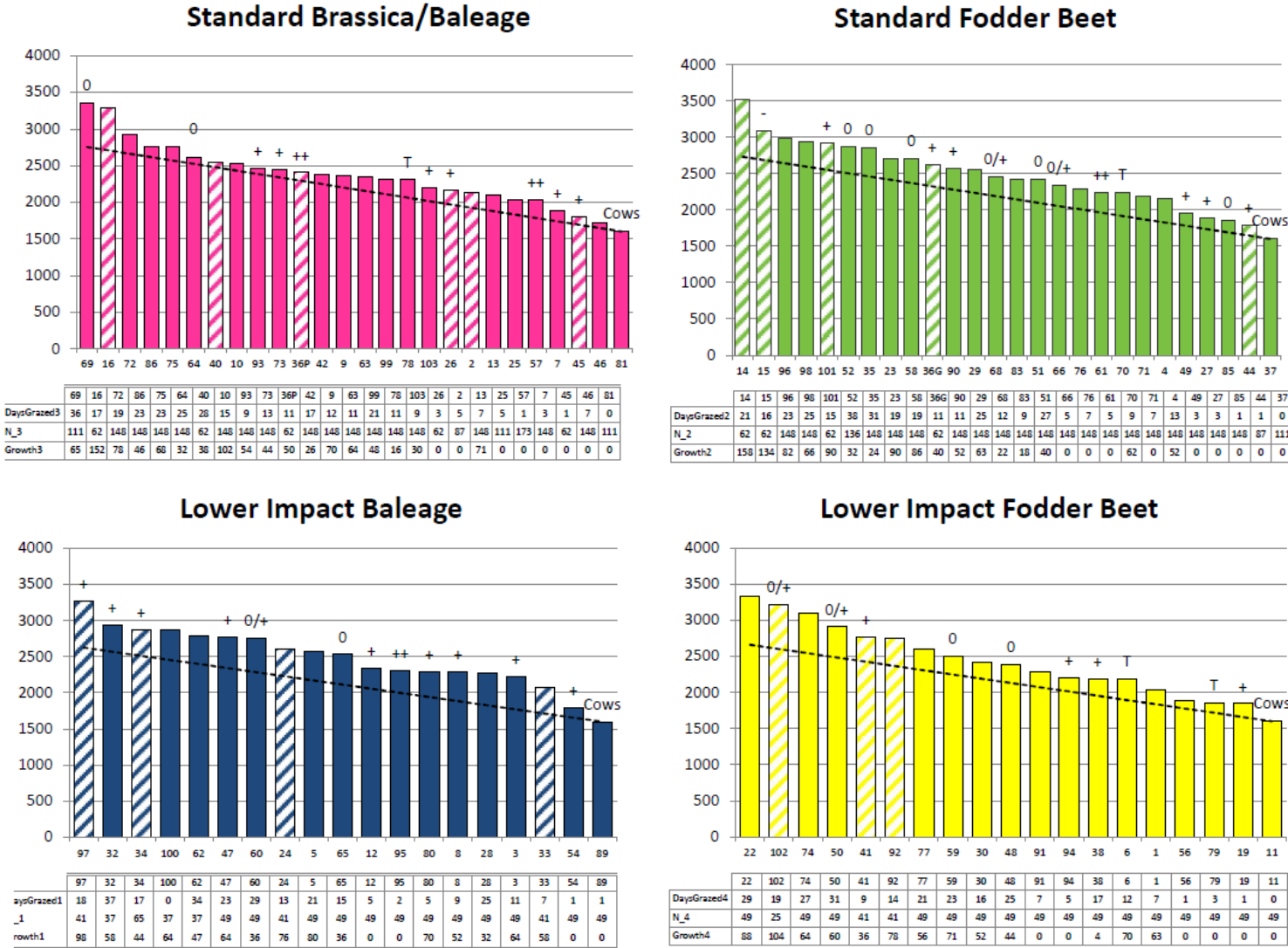


Figure 2: Feed Wedges as of 28<sup>th</sup> March 2023

# Feed

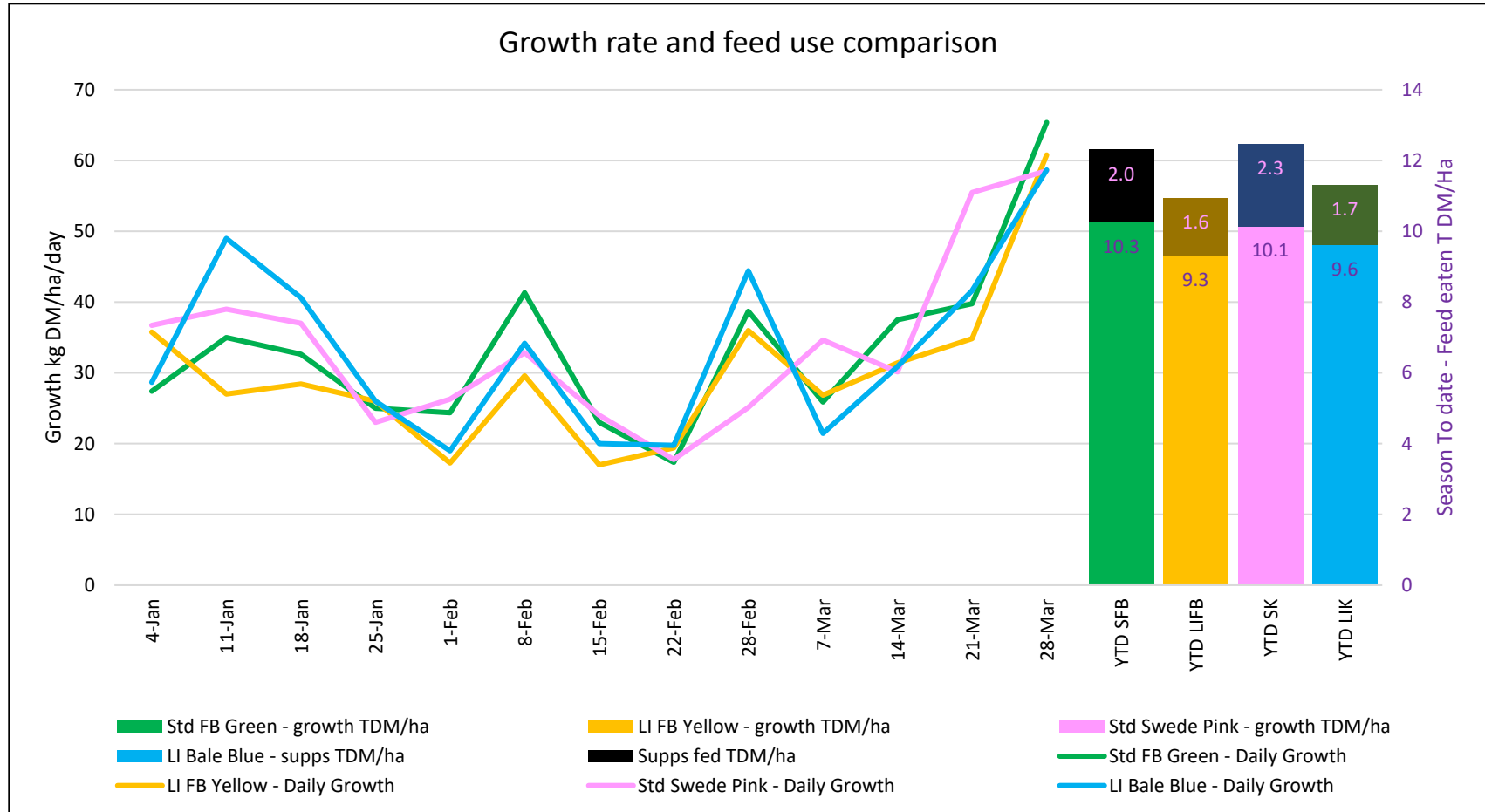
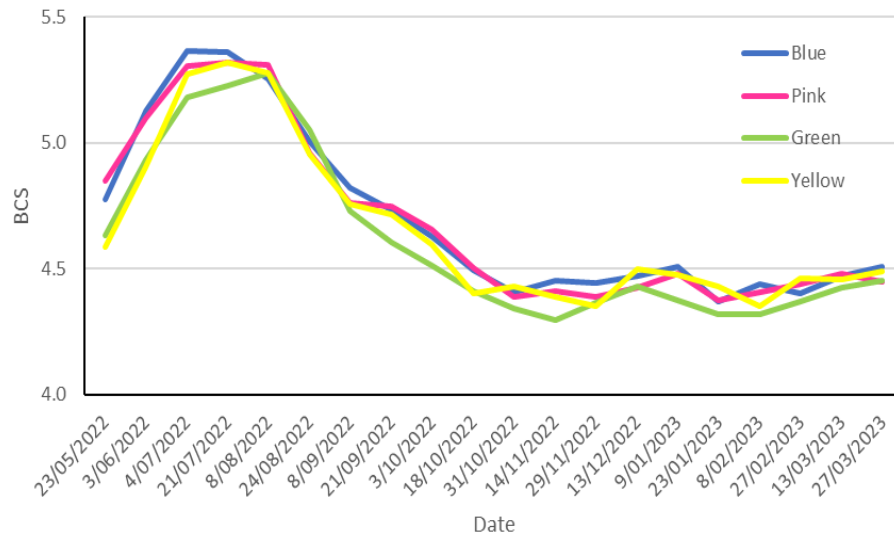


Figure 3: Weekly pasture growth rate at 28<sup>th</sup> March 2023 and year to date total feed eaten

# Animals



Body condition score is trending in the right direction for all herds (Figure 4) however there are about 12 cows across all herds that will be dried off in the next week to ensure they achieve their pre-winter BCS target (Figure 5). Understanding the range of BCS in the herd is critical for decision making at this stage of lactation. The walk over weights are suggesting a slight decrease in average liveweight, however with changes in diet to predominantly pasture and the reduction in pasture DM, the change is likely to be gut fill.

Figure 4: BCS for every fortnight of the 2022/23 season

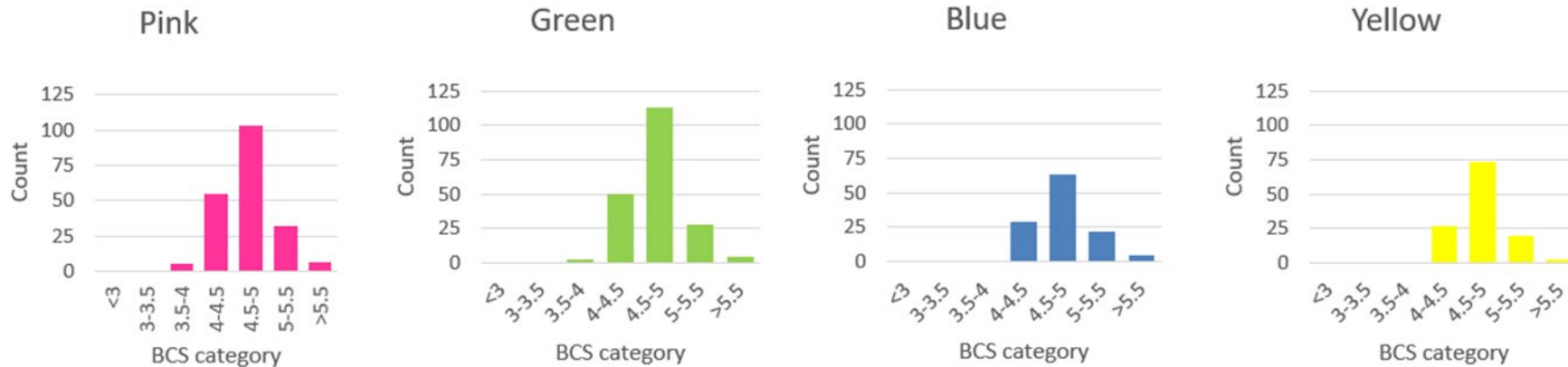


Figure 5: Current BCS distribution within the herds

# Animals



Figure 6 and 7 (Above and below): Pasture colour finally changing and quality lifting



Figure 8: R1's at graziers being weighed and drenched