

Weekly Farm Summary 4 January 2023

Farm-system impacts of: Kale vs Fodder beet for winter AND Reducing N loss to water by 30%.

	Std Swede Pink	LI Bale Blue	Std FB Green	LI FB Yellow
Farmlet area including wintering	82.7	60.9	82.7	60.9
Peak cow numbers	222	137	221	135
Milking Area	73.8	55.1	73.8	55.1
Current Herd size (cows)	222	133	215	134
Pasture Stocking rate (current)	3.0	2.4	2.9	2.4
Winter Feed Milking supplement	Swede/Bale	Baleage	Beet 80 days	Beet 60 days
	In-shed feed 500kg/cow + silage as required			
Average Cover	2348	2262	2319	2412
Average Growth	37	29	27	36
Target rotation length	23	25	23	28
Last week act rotation (d)	23	27	25	28
Last week supp (kg DM/cow)	1.8	2.5	1.3	1.0
Average BCS	4.4	4.5	4.4	4.5
% of herd on priority feeding	7%	5%	5%	2%
Milk yield (L/cow)	21.0	22.7	20.4	21.5
Milk yield (kgMS/cow)	1.88	2.06	1.87	1.97
Nitrogen Cap kgN/ha/yr	180	50	180	50
% Nitrogen used (kgN/ha) YTD	49% (89kg)	60% (30kg)	47% (85kg)	58% (29kg)
Effluent N YTD	8	8	8	5
Profit/ha comp to Control	\$0	\$0	\$0	\$0
YTD supp (kg DM/cow)	450	296	394	320
YTD MS/cow	262	277	259	275
YTD MS/milk ha (YTD MS/farm ha)	788 (704)	689 (624)	776 (693)	674 (609)
Business Area	Current Status			
Milk Production	Cresting off peak as we see higher dry matter pastures and quality changes impact milk. New-grass grazings of lush green grass lifting cow performance. Passed our "half way day week" and on target to do record production.			
Pasture & Feed	Big drop in growth rates this week with more intense heat and dropping soil moisture causing areas of pasture to brown off. Soil moisture lower than this time last year. Firm hold on rotation now through summer, and we use all leavers to maintain or slow rotation and preserve cover. New grasses always seem to get too long and get an extra 12 hours per paddock and all dropping back into the round now. Nitrogen use with moisture to push growth, and topping up diets as needed to meet demand (1-3.2kgDM/cow across the herds)			
Animals	Consistent numbers coming through for AB with 3 weeks left to run.			
Environment	Using effluent as nutrient rich moisture around the farm			
Wintering	No updates			
People	Lots of the team having annual leave			
Research	No updates			

Milk Production

Principles of Milk Production management this week

Milk Production	
Key Influences on Milk Production	
Cow Management	

	Std brassica/baleage Pink	LI Baleage Blue	Std Fodder beet Green	LI Fodder beet Yellow
kg Milksolids per cow this week / (last week)	1.90 (1.96)	2.01 (2.06)	1.94 (2.00)	1.94 (1.97)
kg Milksolids per ha this year / (same time last year)	715 (638)	623 (564)	705 (630)	610 (552)
% Var kg Milksolids per ha Season per ha to date vs last season to date	11.4	8.7	16.6	13.0
No. of Cows needing preferential feeding (% herd)	15 (7)	7 (5)	11 (5)	3 (2)
Animal Health peculiarities	None	None	None	None

Milk Production

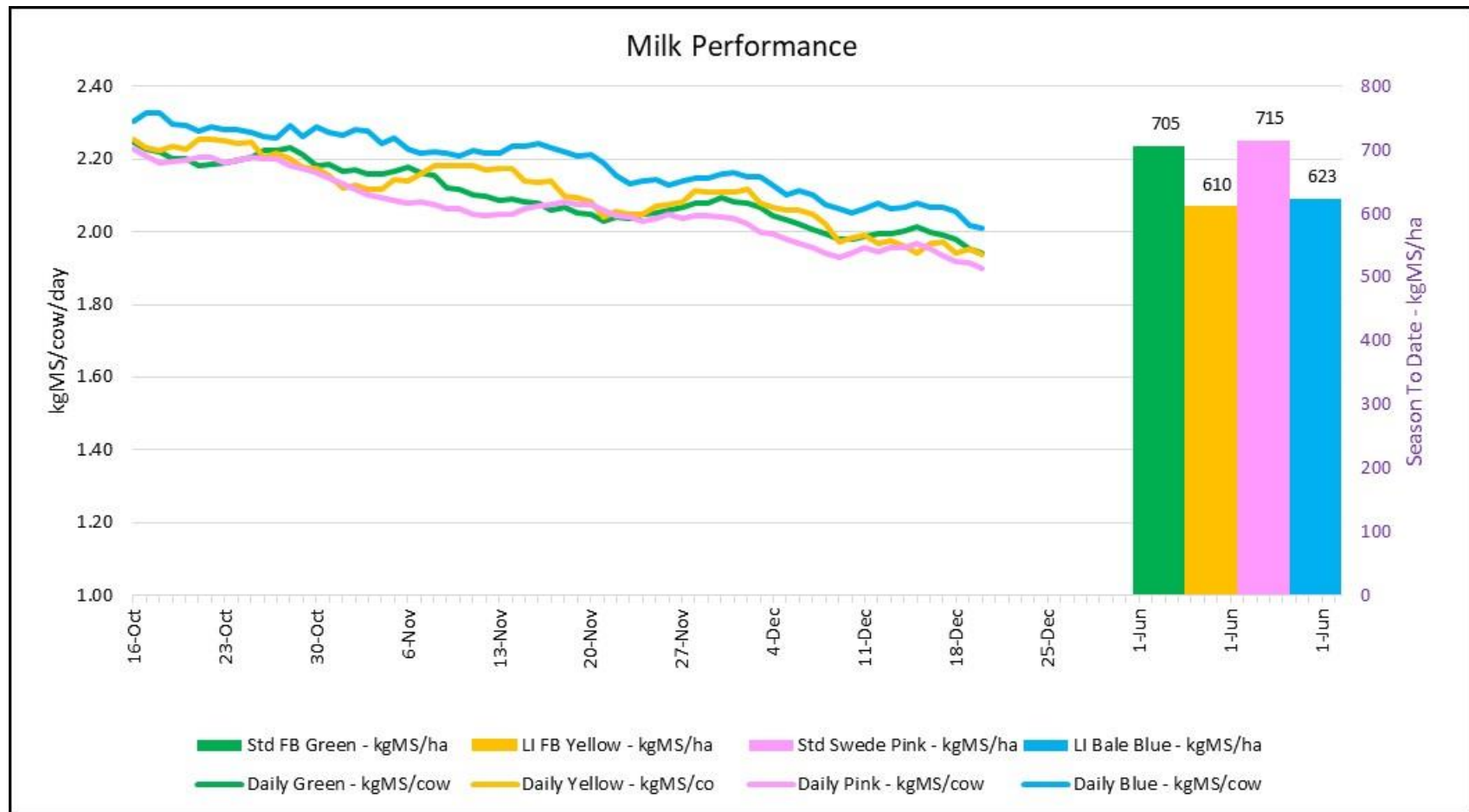


Figure 1: Milk solids production (/cow/day) plus cumulative season production (kg/ha)

Body condition score

As at 13th December 2022 – updated fortnightly

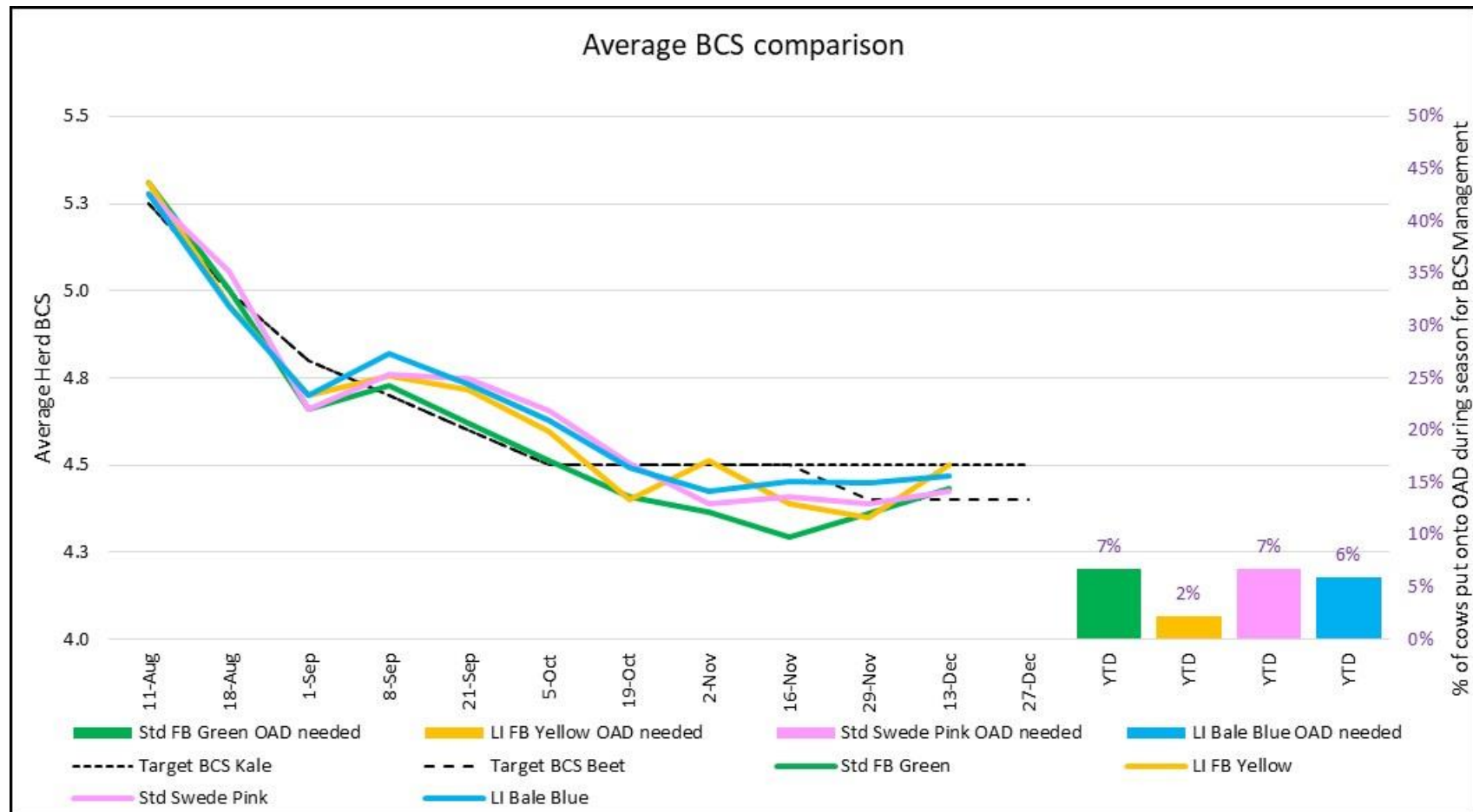


Figure 2: Fortnightly BCS trends and percentage of the herd requiring OAD milking season to date

Feed

Principles of Feed management this week

Feed Quality	
Growth Rate Management	
Nitrogen Strategy	

	Std brassica/baleage Pink	LI Baleage Blue	Std Fodder beet Green	LI Fodder beet Yellow
Quantity	Surplus	Surplus	Surplus	Surplus
Quality	Some stem elongation stalky base & Seed head also good colour and amounts of clover	Some stem elongation stalky base & Seed head also good colour and amounts of clover	Some stem elongation stalky base & Seed head also good colour and amounts of clover	Some stem elongation stalky base & Seed head also good colour and amounts of clover
Surplus Management	X 3 pdk to conserve	X 4 pdk to conserve	X 3 pdk to conserve	X 3 pdk to conserve
Deficit Management - kgDM (diff from last week)	1.0 (-0.5)	1.0 (-0.4)	1.0 (-1.1)	1.0 (-0.1)
Target Rotation Length (days)	23	27	23	28

Feed

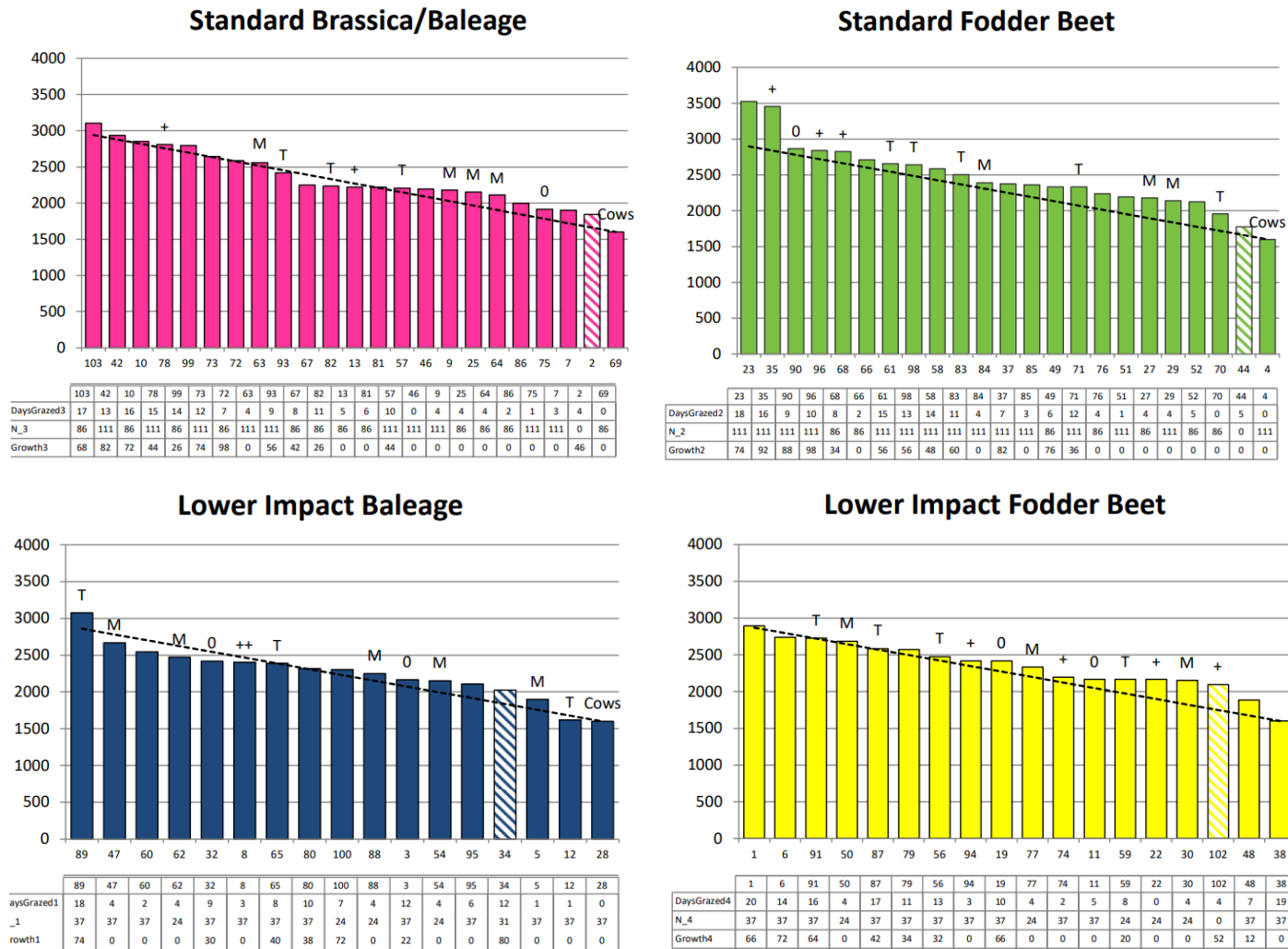


Figure 3: Feed Wedges as of 28th December 2022

Feed

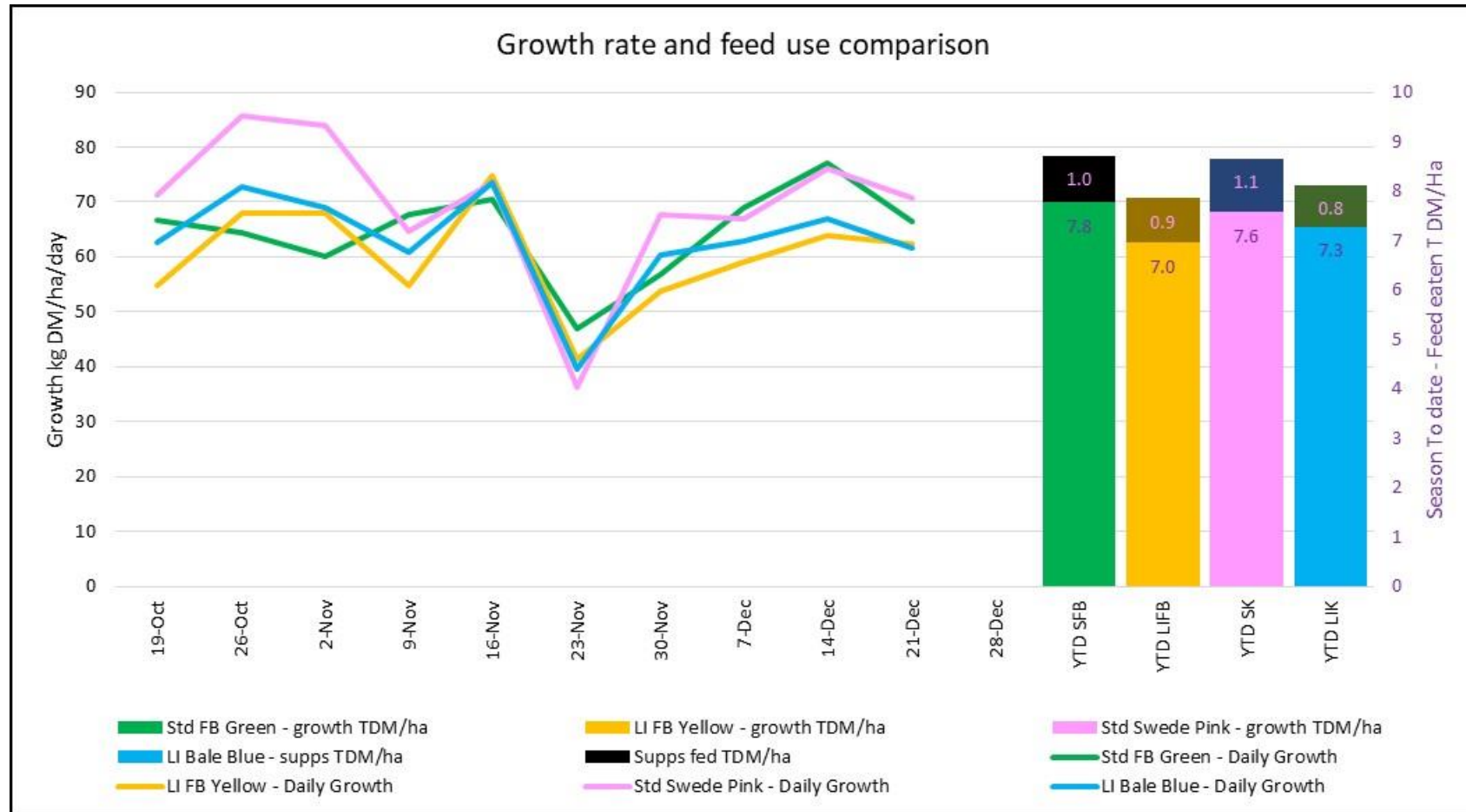


Figure 4: Weekly growth rate (kgDM/ha/d) & YTD feed use

Farm Photos



Photo 1: Collecting Effluent Sample



Photo 2: Weed burden in minimum till "New Grass" paddock 40. (Ex-Fodder Beet)

Happy Holidays from the Team



Photo 3: Cow "Beloved" aka Pet



Photo 4: Cow "Violet"



Photo 5: Cow "Ash"



Photo 6: Cow "Small Speckle"