

Weekly Farm Summary 4 October 2023

Farm-system impacts of: Bales vs Beet for winter AND Reducing N loss to water by 30%.

	Blue -Std Infrastructure	Pink- LI Baleage	Green- Std FB	Yellow- LI FB
Farmlet area including wintering	49.3	93.6	86.9	60.8
Peak cow numbers	140	212	237	137
Milking Area	52.2	86.3	75.3	55.0
Current Herd size (cows)	132	200	228	133
Pasture Stocking rate (current)	2.5	2.3	3.0	2.4
Winter Feed Milking supplement	Baleage	Baleage	Beet	Beet
Average Cover (kgDM/ha)	2297	2315	2098	2274
Average Growth (kgDM/ha/d)	38	29	38	31
Target rotation length (d)	24	26	26	29
Last week actual rotation (d)	26	26	22	22
Last week supp (kgDM/c)	2.0	3.1	3.7	1.7
Latest Average BCS	N	E	X	T
% less than BCS 5	W	E	E	K
7-day Average Milk yield (L/cow)	24.5	24.1	24.1	24.8
7-day Average Milk yield (kgMS/c)	2.01	1.97	2.13	2.19
Nitrogen Cap kgN/ha/yr	180	50	180	50
% Nitrogen used (kgN/ha) YTD	11%	16%	18%	13%
Effluent N YTD	0	0	1	0
YTD supp (kg DM/c)	52	82	133	58
YTD MS/milk ha (YTD MS/farm ha)	287 (320)	117 (113)	224 (204)	183 (174)
Focus area	Current Status			
Milk Production	Milk production continues to fluctuate and this week we are seeing a direct reflection in the vat when feeding levels are compromised. Intake as always is the key driver of production so this will be increased where possible this coming week to ensure the cows have the best chance of closing the 2700 kgMS gap between this year and last year's season to date production. SCC has dropped in the FB vat but is still sitting higher than the other vat so further investigations are being done in this space.			
Pasture & Feed	Residuals have been much easier to achieve this week with nicer weather conditions. Our spring rotation planners have finished, and we are now working off the target pasture allocation line on the feed wedges for all farmlets. The pasture target intakes range between 15kgDM/cow and 18.5kgDM/cow depending on the APC. In-shed feed levels are to remain at 1.5kg/cow/day with baleage/ silage being used to get total intakes to 19.5kg for the LI herds and 19kg for the Standard herds.			
Animals	With only 6 cows left to calve, we are very quickly moving in mating mode with the cows having their first application of tail paint on Monday. 231 cows were metrichecked by the VetSouth team earlier this week with only 6 cows requiring treatment. The first mob of calves (89 animals) finally made their way to the support block on Monday after a few weather related setbacks. These calves are getting milk OAD and meal as required.			
Environment	N applications are booked to go this Friday and next Wednesday as look to finish the last applications of the first round. Effluent samples were taken on Monday to give an indication of the nutrient content of the effluent going on.			
Wintering	The PGG team have been on farm this week discussing spray requirements for getting next years cropping regime underway. Decisions have been made around what paddocks are getting ripped vs ripped and ploughed. Due to the farmlet comparison we have to ensure that the balance is equal across wintering systems i.e. Yellow and Green farmlets have the same number of ha ripped vs ripped and ploughed.			
People	Annual leave has been taken by some of the team this week to enjoy the school holidays with their families. A shoutout to both Sam and the farm team for their work in getting prepared for the annual shed inspection. Thanks guys!			
Research	As mentioned, the first effluent samples have been taken this week so we will wait to see what the nutrient levels are doing and applications may be altered accordingly.			

Milk Production

Principles of Milk Production management this week

Milk production	Milk production is still not quite on track with this time last season and is being very responsive to the smallest changes in feeding levels. However, the second half of the week where feeding levels have been accurate, this is being reflected positively in the vat.
Key Influences of Milk Production	The slower start to calving could be part of the picture when comparing the cumulative production against last season. However, the latest herd test results have shown that the 2- and 3-year-olds in a couple of the herds are not performing well as they should be for this time of the year compared to the mixed age cows. Targets against the mixed age cows are 75% for the two-year-olds and 90-95% for the three-year-olds and these two herds are 64-67% for the two year olds and 88 -90% for the three year olds. While we have had lots of pasture this season the variation in quality and utilization due to weather challenge are likely impacting on production.
Cow Management	8 more cows were added to the OAD and preferential feeding list this week taking the total to 42, after Billy identified these cows whilst on the vet stand tail painting. Some of these cows were missed following the previous BCS observations while others are OK BCS but have rough coats (not thriving) and at this time in the season we all pulling all levers to ensure cows are cycling for the start of mating.

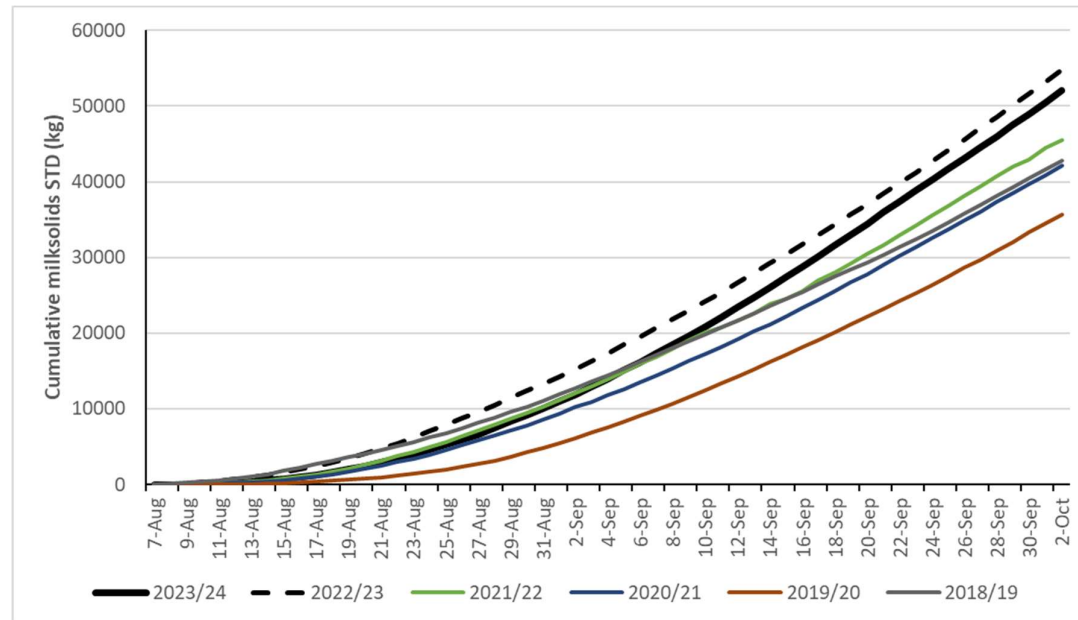


Figure 1. Cumulative milksolids (total kgMS) this year compared to past 4 years.

Principles of Feed management this week

Feed Quality

Due to the flood coming through, we are still navigating through some silt covered paddocks on the bottom terrace therefore quality is being challenged in that part of the farm. However, the top terrace has great quality for this time of the season. We have a good supply of silage in the stack as we head towards the end of the supply of milking quality baleage. We are still offering 1.5kg of inshed feed as a vehicle for minerals and will continue to do so for the foreseeable future. DM samples will be taken again from the monitor paddocks as there is the potential that the DM% has reduced since the last samples were taken.

Growth Rate

Growth rates have rebounded this week with the range across the farm between 29-38kgDM/ha/day, however with some more sunshine and N in the system we do expect this to continue lifting. Currently targeting a 25-day round length. With the spring rotation planner finished the team are being challenged with fully utilizing the feed wedge information to ensure that pre graze entry targets are met to maximise pasture intake goals.

Nitrogen Strategy

Weather conditions have pushed out the N applications to finish the first round until Friday this week and Wednesday next week.

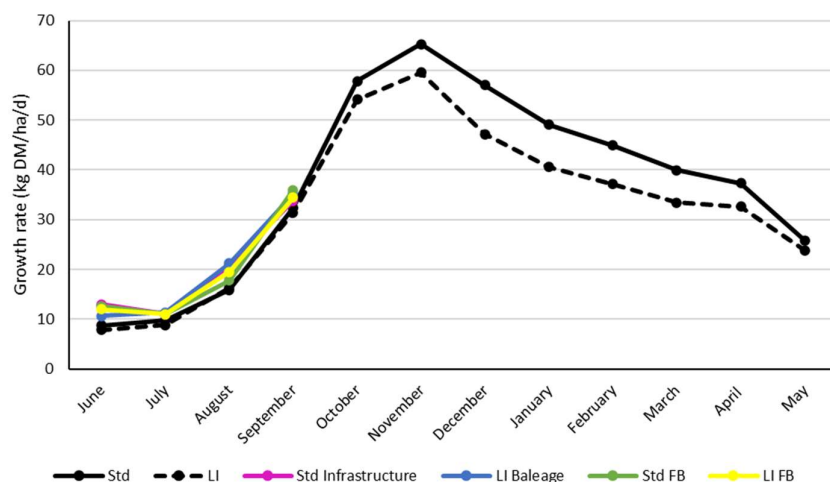


Figure 2. Average monthly growth rate

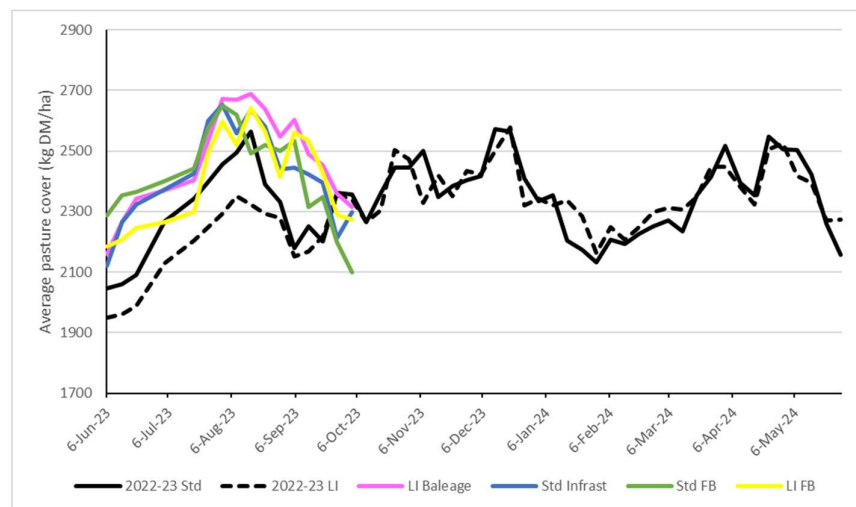
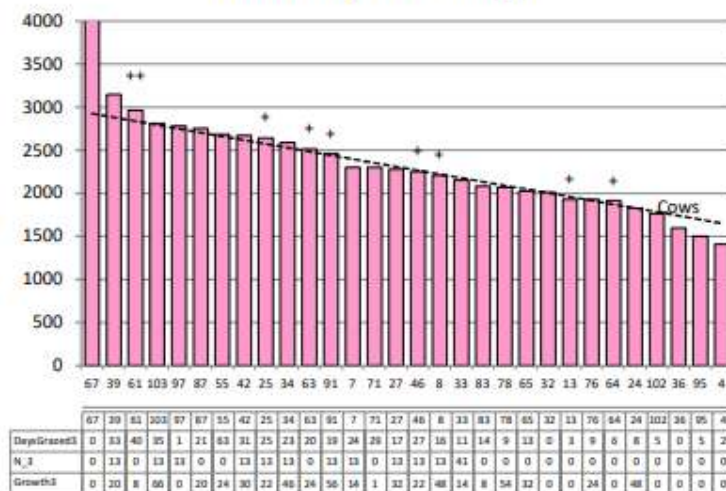
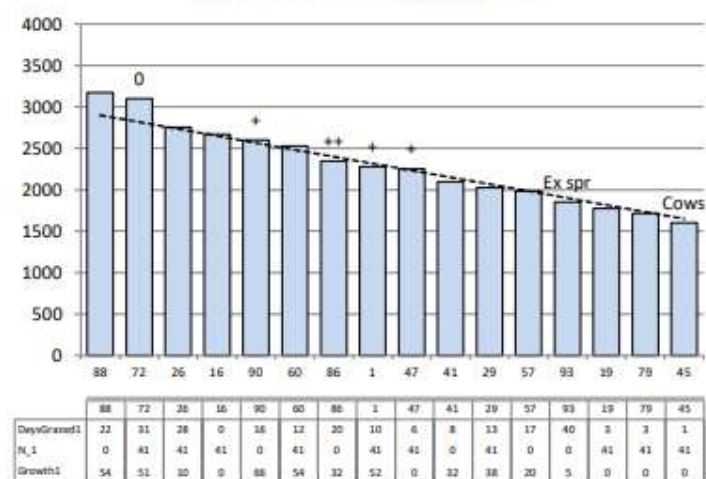


Figure 3. Average weekly average pasture cover compared to 2022-23

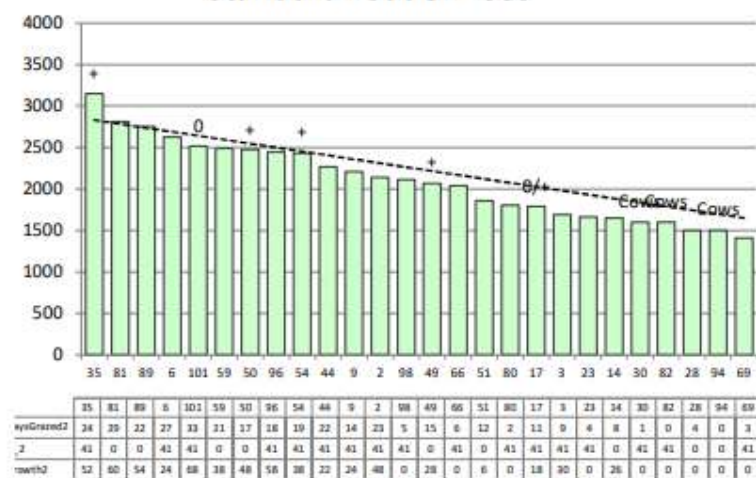
Lower Impact Baleage



Standard Infrastructure



Standard Fodder Beet



Lower Impact Fodder Beet

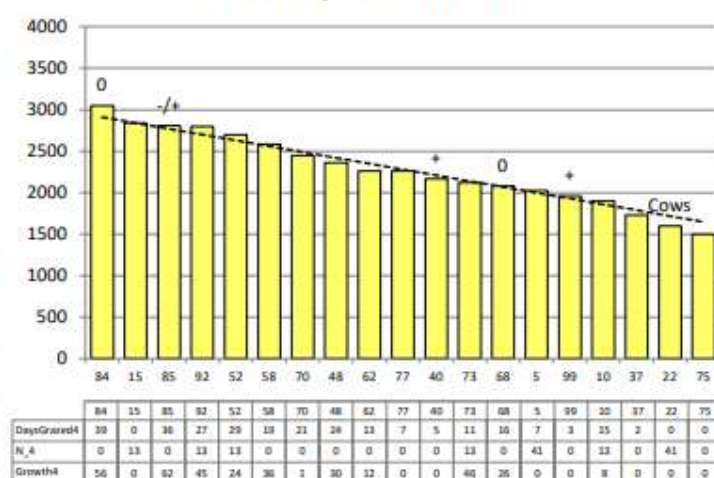


Figure 4. Plate meter feed wedges at 3 October