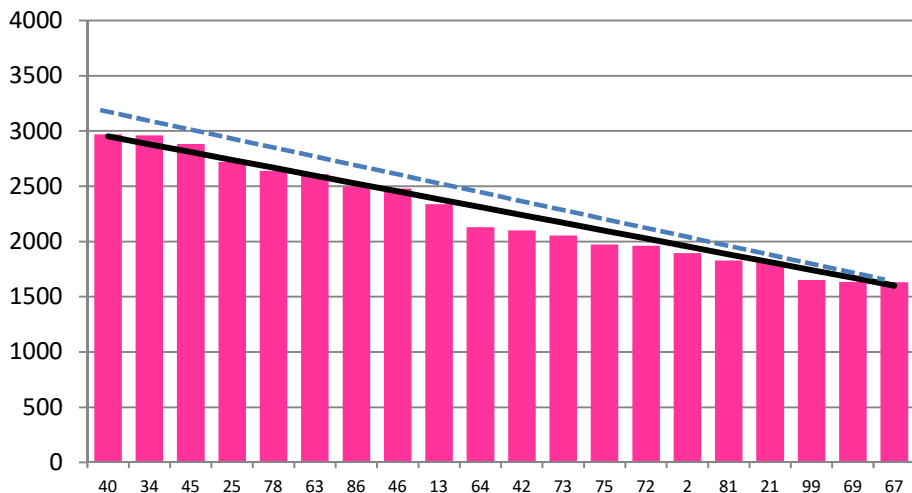


Date 03-10-18

Herd size (cows)	170	Average Cover	2238
Target residual (kg DM/ha)	1600	Average Growth	37
Target intake (kg DM/cow)	15.5	Farmlet area	58.28
Target Area offered (ha/day)	1.95	Target rotation length	30
Last week actual rotation (d)	34	Target demand	45
Last week supp (kg DM/cow)	0.6	YTD supp (kg DM/cow)	97
Last week N (kg N/ha)	7	Fert N YTD	36
Milk yield (L/cow)	20.0	Effluent N YTD	0
Fat%	N	Last wk MS	W
Prot%	E	YTD MS/cow	E
SCC	X	YTD MS/ha	E
Average BCS	T	% less than BCS 4	K

Herd size (cows)	160	Average Cover	2198
Target residual (kg DM/ha)	1600	Average Growth	32
Target intake (kg DM/cow)	15.2	Farmlet area	60.60
Target Area offered (ha/day)	2	Target rotation length	30
Last week actual rotation (d)	31	Target demand	40
Last week supp (kg DM/cow)	1.4	YTD supp (kg DM/cow)	65
Last week N (kg N/ha)	3	Fert N YTD	34
Milk yield (L/cow)	20.3	Effluent N YTD	0
Fat%	N	Last wk MS	W
Prot%	E	YTD MS/cow	E
SCC	X	YTD MS/ha	E
Average BCS	T	% less than BCS 4	K

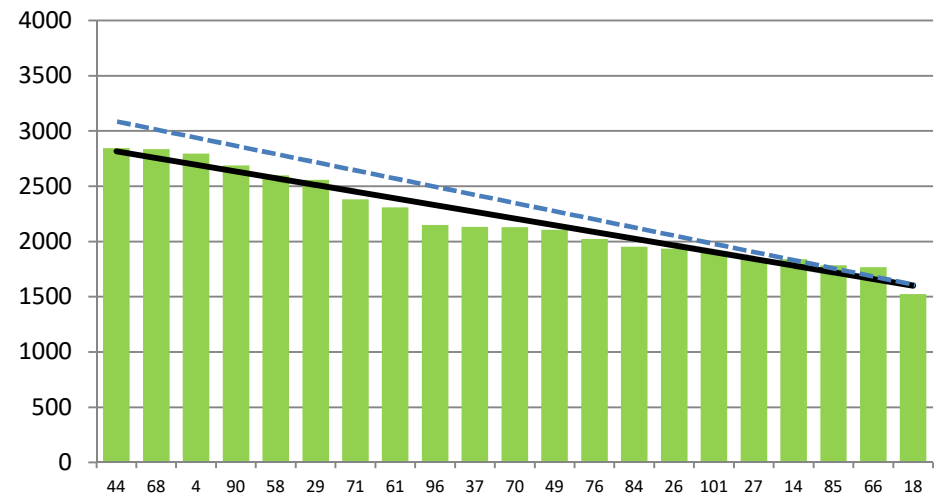
### Standard Kale



	40	34	45	25	78	63	86	46	13	64	42	73	75	72	2	81	21	99	69	67
DaysGrazed3	5	0	28	43	32	35	18	26	20	1	12	6	9	8	8	3	10	0	5	2
N_3	31	31	31	0	31	0	25	31	31	31	31	61	30	61	0	61	30	31	58	61
Growth3	0	0	33	34	29	19	51	24	29	0	27	0	41	61	46	0	46	0	0	0

Farmlet notes: Hold current 30 day rotation; offer 2.5 kg DM/cow/day in the shed; continue with 30 kg N/ha after grazing; Feed wedge indicating a potential deficit in 10-12 days at current rotation length and pre-graze target:  
NB: dotted line is target line for pasture only diet

### Standard Fodder Beet



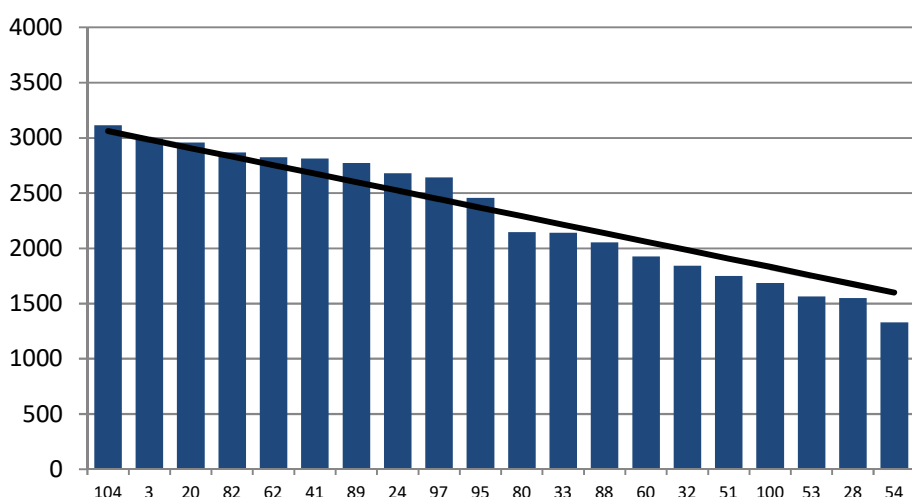
	44	68	4	90	58	29	71	61	96	37	70	49	76	84	26	101	27	14	85	66	18
DaysGrazed2	36	27	30	52	3	24	33	1	19	6	1	3	11	13	7	4	3	1	7	0	0
N_2	31	31	31	31	31	31	31	31	31	61	31	31	31	31	31	31	61	31	31	31	31
Growth2	7	58	23	28	0	28	24	0	34	0	0	0	51	39	0	0	0	0	0	0	0

Farmlet notes: Hold current 30 day rotation; offer up to 3 kg fodder beet/cow/day; continue with 30 kg N/ha after grazing; Feed wedge indicating a small deficit in 8 days at current rotation length and pre-graze target:  
NB: dotted line is target line for pasture only diet

Herd size (cows)	150	Average Cover	2311
Target residual (kg DM/ha)	1600	Average Growth	41
Target intake (kg DM/cow)	18.5	Farmlet area	57.71
Target Area offered (ha/day)	1.9	Target rotation length	30
Last week rotation avg	29	Target demand	48
Last week supp (kg DM/cow)	0.6	YTD supp (kg DM/cow)	107
Last week N (kg N/ha)	0	Fert N YTD	22
Milk yield	21.5	Effluent N YTD	0
Fat%	N	Last wk MS	W
Prot%	E	YTD MS/cow	E
SCC	X	YTD MS/ha	E
Average BCS	T	% less than BCS 4	K

Herd size (cows)	140	Average Cover	2193
Target residual (kg DM/ha)	1600	Average Growth	36
Target intake (kg DM/cow)	15.8	Farmlet area	55.54
Target Area offered (ha/day)	1.9	Target rotation length	29
Last week rotation avg	35	Target demand	40
Last week supp (kg DM/cow)	1.1	YTD supp (kg DM/cow)	78
Last week N (kg N/ha)	0	Fert N YTD	23
Milk yield	20.1	Effluent N YTD	0
Fat%	N	Last wk MS	W
Prot%	E	YTD MS/cow	E
SCC	X	YTD MS/ha	E
Average BCS	T	% less than BCS 4	K

### Low Impact Kale

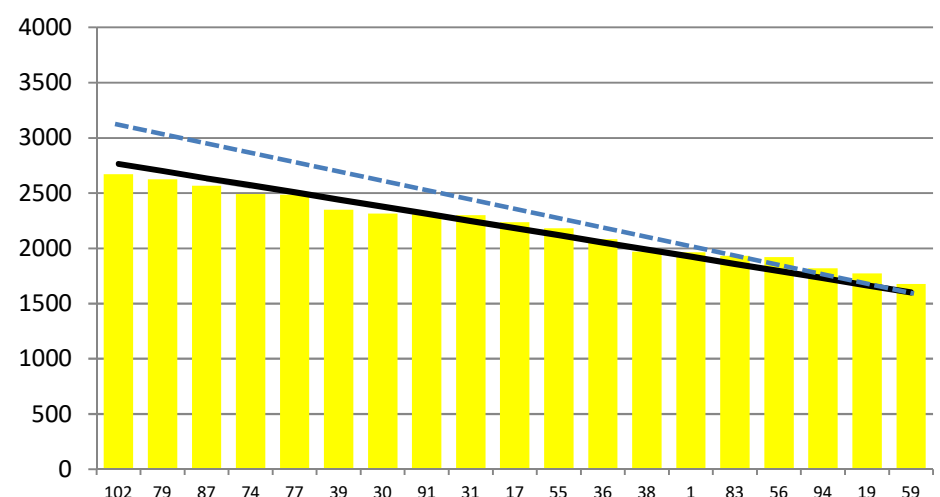


	104	3	20	82	62	41	89	24	97	95	80	33	88	60	32	51	100	53	28	54
DaysGrazed1	0	33	25	30	35	3	49	17	26	20	14	9	11	3	5	2	6	3	1	0
N_1	31	25	25	25	25	25	25	25	25	25	25	25	25	0	0	17	25	25	25	25
Growth1	0	47	62	29	17	0	44	80	11	21	32	44	63	0	0	0	0	0	0	0

Farmlet notes: Hold current 30 day rotation; No supplements to be offered; monitor residuals and step over paddock 3 if residuals are above 1600 in the next 2 paddocks.

NB: dotted line is target line for pasture only diet

### Low Impact Fodder Beet



	102	79	87	74	77	39	30	91	31	17	55	36	38	1	83	56	94	19	59
DaysGrazed4	27	30	22	28	19	16	12	44	1	11	5	6	8	7	14	3	2	5	0
N_4	25	25	25	25	25	25	25	25	25	25	25	0	25	25	25	25	25	25	25
Growth4	23	11	63	33	49	50	62	0	0	51	0	0	43	0	8	0	0	0	0

Farmlet notes: Hold current 30 day rotation; Continue with lifted FB in paddock on a case by case basis assessing residuals after the first break in each paddock and adding to breaks 2 & 3 if required at no > 2.2 kg DM/cow; Pdk 91 identified as struggling, apply 25 kg N/ha after grazing.

NB: dotted line is target line for pasture only diet