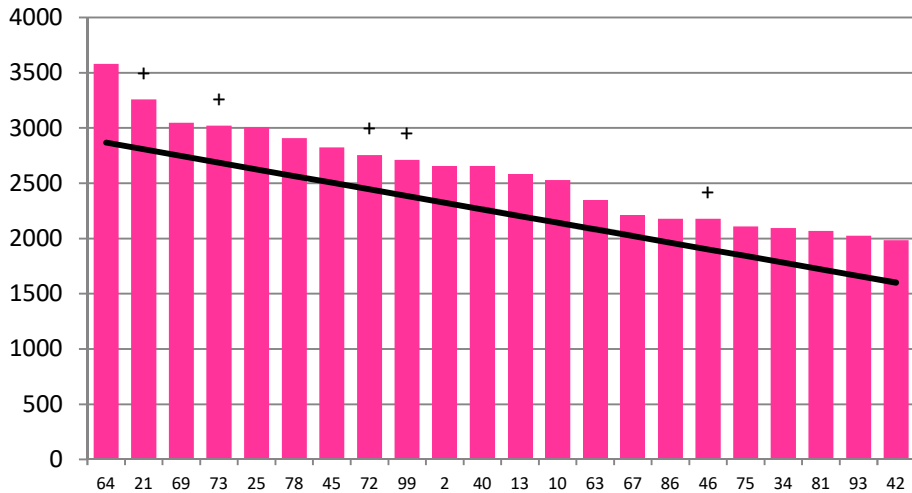


Date 05-12-18

Herd size (cows)	178	Average Cover	2580
Target residual (kg DM/ha)	1600	Average Growth	79
Target intake (kg DM/cow)	18.5	Farmlet area	64.09
Target Area offered (ha/day)	2.6	Target rotation length	25
Last week actual rotation (d)	29	Target demand	51
Last week supp (kg DM/cow)	0.8	YTD supp (kg DM/cow)	6
Last week N (kg N/ha)	0	Fert N YTD	80
Milk yield (L/cow)	18.9	Effluent N YTD	0
Fat%	4.4	Last wk MS	1.8
Prot%	3.8	YTD MS/cow	103
SCC	123	YTD MS/ha	321
Average BCS	4.4	% less than BCS 4	3%

Herd size (cows)	178	Average Cover	2520
Target residual (kg DM/ha)	1600	Average Growth	69
Target intake (kg DM/cow)	18.5	Farmlet area	63.51
Target Area offered (ha/day)	2.5	Target rotation length	25
Last week actual rotation (d)	24	Target demand	52
Last week supp (kg DM/cow)	0.0	YTD supp (kg DM/cow)	0
Last week N (kg N/ha)	0	Fert N YTD	77
Milk yield (L/cow)	19.1	Effluent N YTD	0
Fat%	4.5	Last wk MS	1.7
Prot%	3.8	YTD MS/cow	99
SCC	129	YTD MS/ha	305
Average BCS	4.5	% less than BCS 4	3%

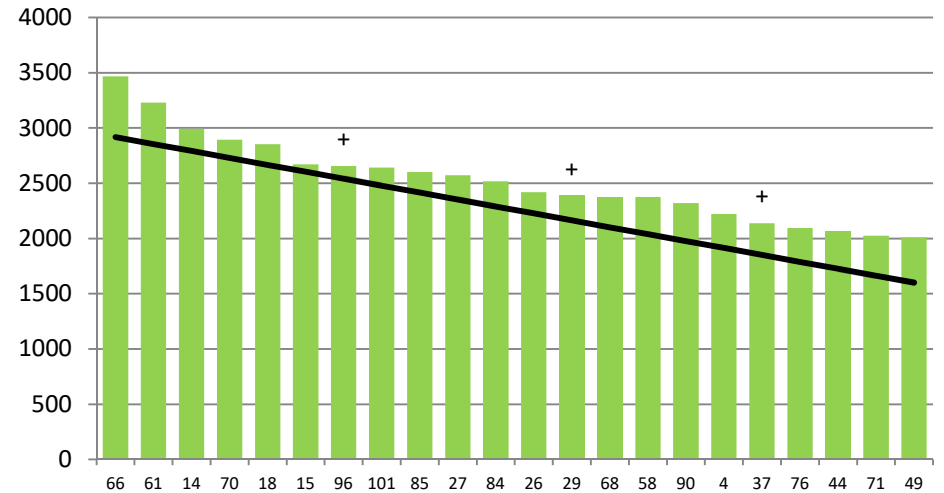
### Standard Kale



DaysGrazed3	0	18	20	20	9	25	25	15	17	14	12	8	0	11	0	7	2	5	1	4	0	2
N_3	61	120	117	91	60	61	61	117	120	60	91	91	0	60	91	84	91	60	61	91	0	91
Growth3	0	152	96	76	114	30	66	114	54	76	82	56	0	36	0	0	0	0	0	0	0	0

Farmlet notes: Eff SR = 3.0; Visual APC 2299; 3 pdks (21, 40, 99) stepped over for conservation; 18 bales conserved this week. Supplement fed for 2 days this week. N to be applied once ground conditions allow; New grass paddocks back in the rotation and will receive 25 kg N/ha after their first grazing, pdks to be topped and weeds assessed for spraying.

### Standard Fodder Beet



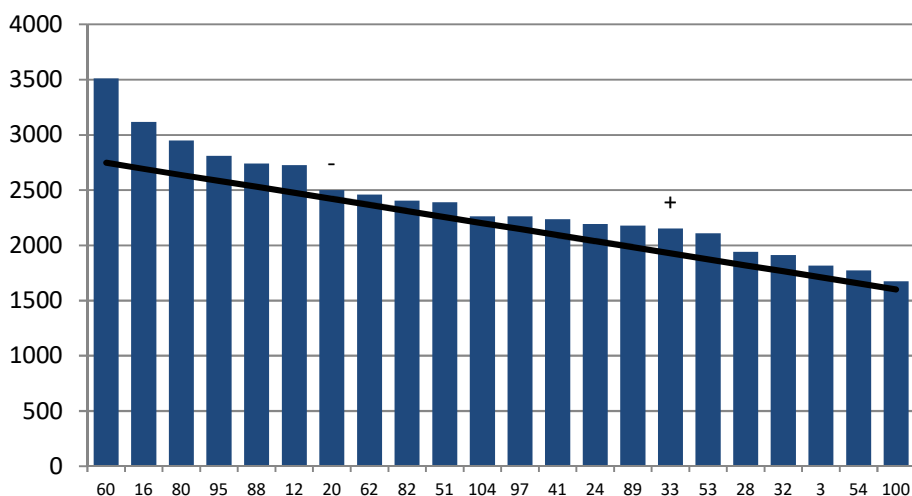
DaysGrazed2	25	0	14	19	8	0	21	16	17	10	18	3	9	7	13	11	0	2	4	2	5	2
N_2	61	61	91	61	0	61	91	91	120	91	91	61	91	91	91	91	61	91	61	91	61	91
Growth2	68	0	80	102	122	0	58	68	62	52	68	0	60	0	42	48	0	0	0	0	0	0

Farmlet notes: Eff SR = 3.0; Visual APC 2176; 3 pdks (14, 101, 85) stepped over for conservation; 47 bales conserved this week. N to be applied once ground conditions allow; New grass paddocks back in the rotation and will receive 25 kg N/ha after their first grazing, pdks to be topped and weeds assessed for spraying.

Herd size (cows)	155	Average Cover	2372
Target residual (kg DM/ha)	1600	Average Growth	59
Target intake (kg DM/cow)	18.5	Farmlet area	63.51
Target Area offered (ha/day)	2.5	Target rotation length	25
Last week rotation avg	24	Target demand	45
Last week supp (kg DM/cow)	0.9	YTD supp (kg DM/cow)	97
Last week N (kg N/ha)	0	Fert N YTD	25
Milk yield	18.1	Effluent N YTD	0
Fat%	4.5	Last wk MS	1.6
Prot%	3.8	YTD MS/cow	100
SCC	178	YTD MS/ha	260
Average BCS	4.4	% less than BCS 4	1%

Herd size (cows)	146	Average Cover	2275
Target residual (kg DM/ha)	1600	Average Growth	45
Target intake (kg DM/cow)	18.5	Farmlet area	61.34
Target Area offered (ha/day)	2.5	Target rotation length	25
Last week rotation avg	20	Target demand	44
Last week supp (kg DM/cow)	0.0	YTD supp (kg DM/cow)	96
Last week N (kg N/ha)	0	Fert N YTD	24
Milk yield	18.1	Effluent N YTD	0
Fat%	4.9	Last wk MS	1.6
Prot%	3.8	YTD MS/cow	96
SCC	184	YTD MS/ha	248
Average BCS	4.5	% less than BCS 4	2%

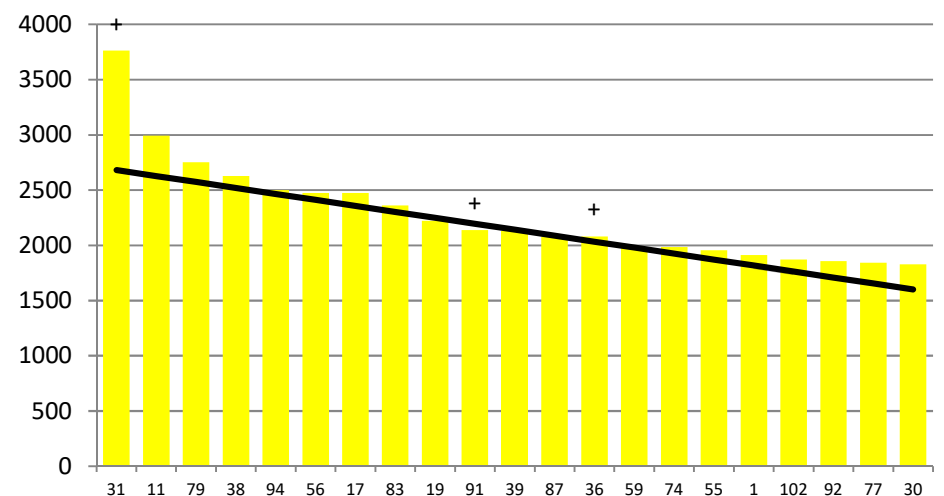
### Low Impact Kale



DaysGrazed1	15	0	27	21	24	0	16	13	8	6	11	11	4	10	7	3	19	2	1	2	0	0
N_1	67	0	25	25	25	0	25	25	25	17	31	25	25	25	25	25	25	25	37	25	25	25
Growth1	132	0	94	30	66	0	92	54	58	0	34	22	0	44	0	0	18	0	0	0	0	0

Farmlet notes: Eff SR = 2.7. Visual APC 2080; Inshed feeding required for 2 days this week; 65 bales conserved from the 3 pdks shut up 2-3 weeks ago. New grass paddocks back in the rotation and will receive 25 kg N/ha after their first grazing, pdks to be topped and weeds assessed for spraying.

### Low Impact Fodder Beet



DaysGrazed4	21	0	25	15	18	12	0	14	2	11	5	9	4	5	1	0	2	2	0	6	2	
N_4	25	0	25	25	25	25	25	25	25	54	25	25	37	25	25	25	25	25	0	25	25	
Growth4	108	0	40	60	14	48	0	28	0	32	0	26	0	0	0	0	0	0	0	0	0	0

Farmlet notes: Eff SR = 2.6. Visual APC 1990; 93 bales conserved from 3 pdks shut up 2-3 weeks ago. New grass paddocks back in the rotation and will receive 25 kg N/ha after their first grazing, pdks to be topped and weeds assessed for spraying. Herd is tight for grass but with good soil moisture and temperature should turn around quickly.