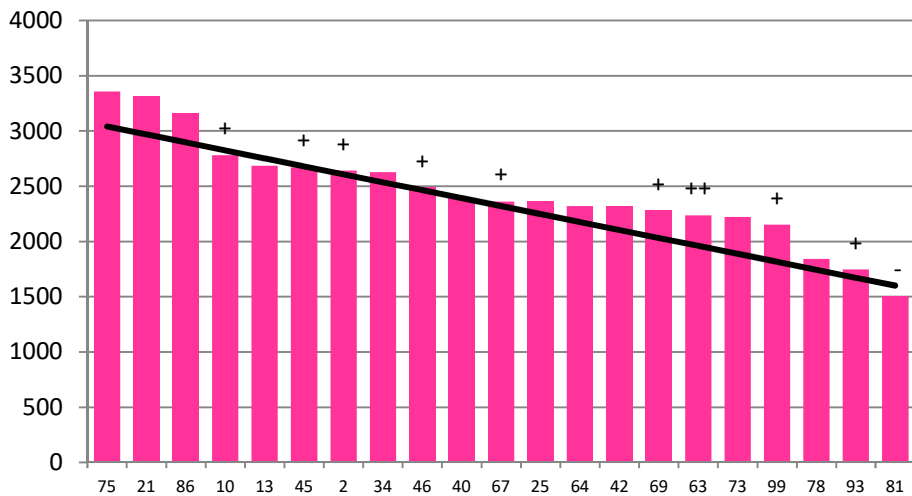


Date 19-02-19

|                               |      |                        |      |
|-------------------------------|------|------------------------|------|
| Herd size (cows)              | 189  | Average Cover          | 2450 |
| Target residual (kg DM/ha)    | 1600 | Average Growth         | 45   |
| Target intake (kg DM/cow)     | 16   | Farmlet area           | 61.2 |
| Target Area offered (ha/day)  | 2.1  | Target rotation length | 29   |
| Last week actual rotation (d) | 37   | Target demand          | 49   |
| Last week supp (kg DM/cow)    | 0.0  | YTD supp (kg DM/cow)   | 168  |
| Last week N (kg N/ha)         | 0    | Fert N YTD             | 149  |
| Milk yield (L/cow)            | 15.4 | Effluent N YTD         | 0    |
| Fat%                          | 5.0  | Last wk MS             | 1.4  |
| Prot%                         | 4.2  | YTD MS/cow             | 341  |
| SCC                           | 211  | YTD MS/ha              | 1066 |
| Average BCS                   | 4.4  | % less than BCS 4      | 3%   |

### Standard Kale

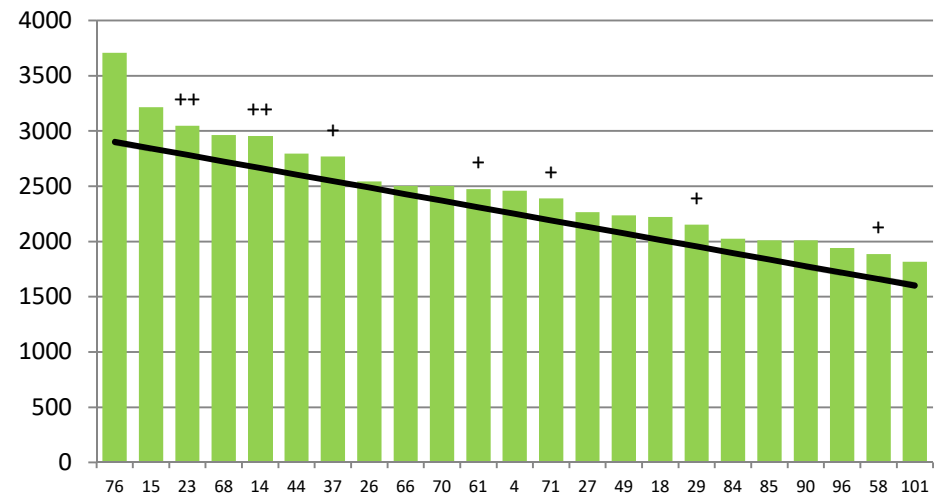


|             |     |     |     |    |     |     |     |     |     |     |     |     |     |     |     |     |     |     |     |    |     |
|-------------|-----|-----|-----|----|-----|-----|-----|-----|-----|-----|-----|-----|-----|-----|-----|-----|-----|-----|-----|----|-----|
|             | 75  | 21  | 86  | 10 | 13  | 45  | 2   | 34  | 46  | 40  | 67  | 25  | 64  | 42  | 69  | 63  | 73  | 99  | 78  | 93 | 81  |
| DaysGrazed3 | 23  | 24  | 30  | 13 | 10  | 16  | 21  | 20  | 18  | 11  | 9   | 15  | 7   | 7   | 7   | 1   | 15  | 7   | 5   | 3  | 0   |
| N_3         | 136 | 170 | 135 | 76 | 141 | 162 | 136 | 137 | 141 | 141 | 141 | 136 | 137 | 141 | 162 | 136 | 141 | 171 | 137 | 76 | 142 |
| Growth3     | 70  | 75  | 93  | 98 | 103 | 44  | 37  | 19  | 28  | 14  | 7   | 28  | 42  | 40  | 23  | 0   | 34  | 9   | 0   | 0  | 0   |

Farmlet notes: Eff SR = 3.0; Visual APC 2354; Target intake now 16 kg DM/cow; Pre-graze target cover now 2900; Stepped over pdk 21 for conservation to get pre-graze covers back on track; N fertiliser applications scheduled for next week - 25 kg N/ha; kale crops appear to be growing well.

|                               |      |                        |      |
|-------------------------------|------|------------------------|------|
| Herd size (cows)              | 187  | Average Cover          | 2475 |
| Target residual (kg DM/ha)    | 1600 | Average Growth         | 39   |
| Target intake (kg DM/cow)     | 16   | Farmlet area           | 66.4 |
| Target Area offered (ha/day)  | 2.3  | Target rotation length | 29   |
| Last week actual rotation (d) | 40   | Target demand          | 45   |
| Last week supp (kg DM/cow)    | 0.0  | YTD supp (kg DM/cow)   | 98   |
| Last week N (kg N/ha)         | 0    | Fert N YTD             | 134  |
| Milk yield (L/cow)            | 14.7 | Effluent N YTD         | 0    |
| Fat%                          | 5.1  | Last wk MS             | 1.6  |
| Prot%                         | 4.1  | YTD MS/cow             | 336  |
| SCC                           | 177  | YTD MS/ha              | 962  |
| Average BCS                   | 4.3  | % less than BCS 4      | 6%   |

### Standard Fodder Beet

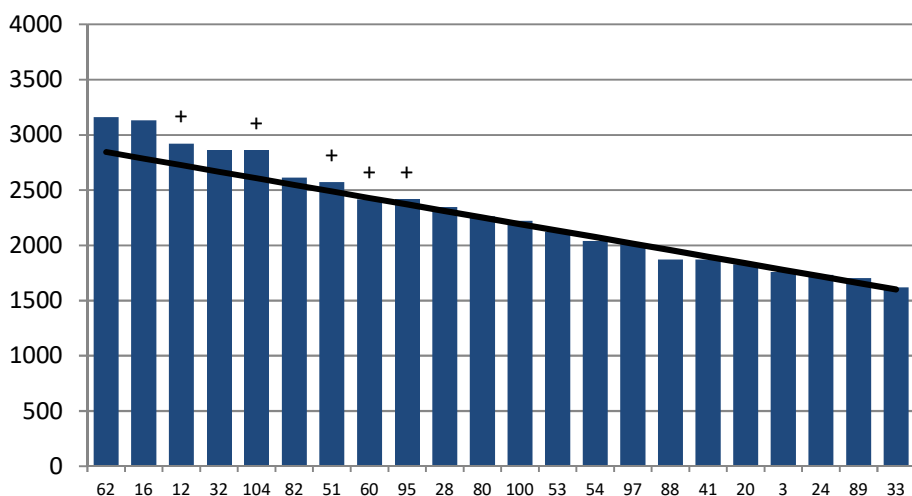


|             |     |     |    |     |     |     |     |     |     |     |     |     |     |     |     |     |     |     |     |     |     |     |     |
|-------------|-----|-----|----|-----|-----|-----|-----|-----|-----|-----|-----|-----|-----|-----|-----|-----|-----|-----|-----|-----|-----|-----|-----|
|             | 76  | 15  | 23 | 68  | 14  | 44  | 37  | 26  | 66  | 70  | 61  | 4   | 71  | 27  | 49  | 18  | 29  | 84  | 85  | 90  | 96  | 58  | 101 |
| DaysGrazed2 | 24  | 15  | 12 | 27  | 18  | 35  | 22  | 10  | 15  | 15  | 17  | 15  | 15  | 15  | 1   | 13  | 20  | 9   | 5   | 3   | 5   | 0   | 7   |
| N_2         | 137 | 76  | 51 | 116 | 141 | 141 | 141 | 141 | 162 | 141 | 137 | 137 | 171 | 141 | 137 | 137 | 141 | 141 | 141 | 141 | 137 | 141 | 141 |
| Growth2     | 93  | 119 | 12 | 28  | 40  | 28  | 30  | 16  | 16  | 30  | 30  | 44  | 21  | 0   | 0   | 0   | 0   | 40  | 0   | 0   | 0   | 0   | 30  |

Farmlet notes: Eff SR = 2.8; Visual APC 2395; Target intake now 16 kg DM/cow; Pre-graze target cover now 2900; Stepped over pdks 76 and 23 for conservation to get pre-graze covers back on track; N fertiliser applications scheduled for next week - 25 kg N/ha; small amount of yellow beet virus damage in some paddocks

|                              |      |                        |      |
|------------------------------|------|------------------------|------|
| Herd size (cows)             | 171  | Average Cover          | 2291 |
| Target residual (kg DM/ha)   | 1600 | Average Growth         | 33   |
| Target intake (kg DM/cow)    | 16   | Farmlet area           | 63.5 |
| Target Area offered (ha/day) | 2.2  | Target rotation length | 29   |
| Last week rotation avg       | 33   | Target demand          | 43   |
| Last week supp (kg DM/cow)   | 0.0  | YTD supp (kg DM/cow)   | 160  |
| Last week N (kg N/ha)        | 0    | Fert N YTD             | 51   |
| Milk yield                   | 15.0 | Effluent N YTD         | 0    |
| Fat%                         | 4.8  | Last wk MS             | 1.5  |
| Prot%                        | 4.0  | YTD MS/cow             | 346  |
| SCC                          | 205  | YTD MS/ha              | 942  |
| Average BCS                  | 4.4  | % less than BCS 4      | 3%   |

### Low Impact Kale

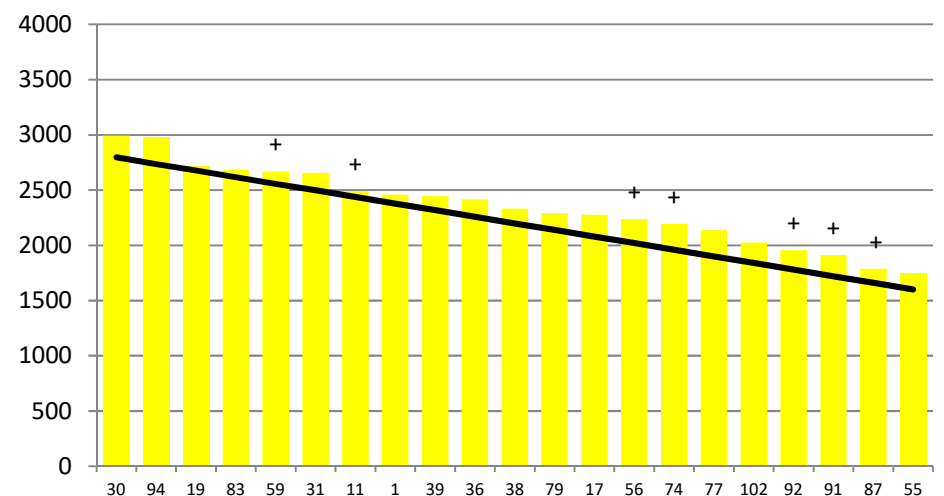


|             |    |    |    |    |     |    |    |    |    |    |    |     |    |    |    |    |    |    |    |    |    |    |
|-------------|----|----|----|----|-----|----|----|----|----|----|----|-----|----|----|----|----|----|----|----|----|----|----|
|             | 62 | 16 | 12 | 32 | 104 | 82 | 51 | 60 | 95 | 28 | 80 | 100 | 53 | 54 | 97 | 88 | 41 | 20 | 3  | 24 | 89 | 33 |
| DaysGrazed1 | 0  | 15 | 18 | 20 | 21  | 25 | 13 | 9  | 15 | 12 | 15 | 15  | 11 | 15 | 8  | 16 | 3  | 7  | 6  | 4  | 0  | 1  |
| N_1         | 50 | 32 | 51 | 62 | 56  | 50 | 42 | 92 | 50 | 50 | 50 | 50  | 50 | 50 | 50 | 50 | 50 | 50 | 50 | 50 | 50 | 50 |
| Growth1     | 0  | 98 | 77 | 51 | 42  | 35 | 7  | 16 | 14 | 30 | 35 | 12  | 7  | 23 | 33 | 19 | 0  | 0  | 0  | 0  | 0  | 0  |

Farmlet notes: Eff SR = 2.7. Visual APC 2222; Target intake now 16 kg DM/cow; Pre-graze target cover now 2800; Stepped over pdk 12 for conservation to get pre-graze covers back on track; delayed N fertiliser applications for at least 2 weeks; will top new grass at the front of pdk 16 after grazing; kale crops appear to be growing well.

|                              |      |                        |      |
|------------------------------|------|------------------------|------|
| Herd size (cows)             | 157  | Average Cover          | 2353 |
| Target residual (kg DM/ha)   | 1600 | Average Growth         | 39   |
| Target intake (kg DM/cow)    | 16   | Farmlet area           | 61.3 |
| Target Area offered (ha/day) | 2.1  | Target rotation length | 29   |
| Last week rotation avg       | 39   | Target demand          | 41   |
| Last week supp (kg DM/cow)   | 0.0  | YTD supp (kg DM/cow)   | 118  |
| Last week N (kg N/ha)        | 0    | Fert N YTD             | 54   |
| Milk yield                   | 13.5 | Effluent N YTD         | 0    |
| Fat%                         | 4.8  | Last wk MS             | 1.4  |
| Prot%                        | 4.2  | YTD MS/cow             | 341  |
| SCC                          | 89   | YTD MS/ha              | 900  |
| Average BCS                  | 4.4  | % less than BCS 4      | 7%   |

### Low Impact Fodder Beet



|             |    |    |     |    |    |    |    |    |    |    |    |    |    |    |    |    |     |    |    |    |    |
|-------------|----|----|-----|----|----|----|----|----|----|----|----|----|----|----|----|----|-----|----|----|----|----|
|             | 30 | 94 | 19  | 83 | 59 | 31 | 11 | 1  | 39 | 36 | 38 | 79 | 17 | 56 | 74 | 77 | 102 | 92 | 91 | 87 | 55 |
| DaysGrazed4 | 36 | 0  | 15  | 18 | 24 | 11 | 14 | 10 | 15 | 20 | 17 | 12 | 9  | 5  | 15 | 15 | 15  | 7  | 4  | 0  | 2  |
| N_4         | 50 | 50 | 100 | 50 | 50 | 50 | 51 | 50 | 50 | 62 | 50 | 50 | 50 | 50 | 50 | 50 | 50  | 51 | 80 | 50 | 50 |
| Growth4     | 77 | 0  | 75  | 68 | 2  | 61 | 70 | 56 | 12 | 9  | 2  | 44 | 30 | 0  | 21 | 33 | 23  | 0  | 0  | 0  | 0  |

Farmlet notes: Eff SR = 2.6. Visual APC 2254; Target intake now 16 kg DM/cow; Pre-graze target cover now 2800; Farmlet is in deficit based on visual covers and milk production has dropped; N fertiliser applications to start next week - 25 kg N/ha; Start feeding baleage at 1 bale/pdk = 1.5 kg DM/cow; small amount of yellow beet virus damage in some paddocks