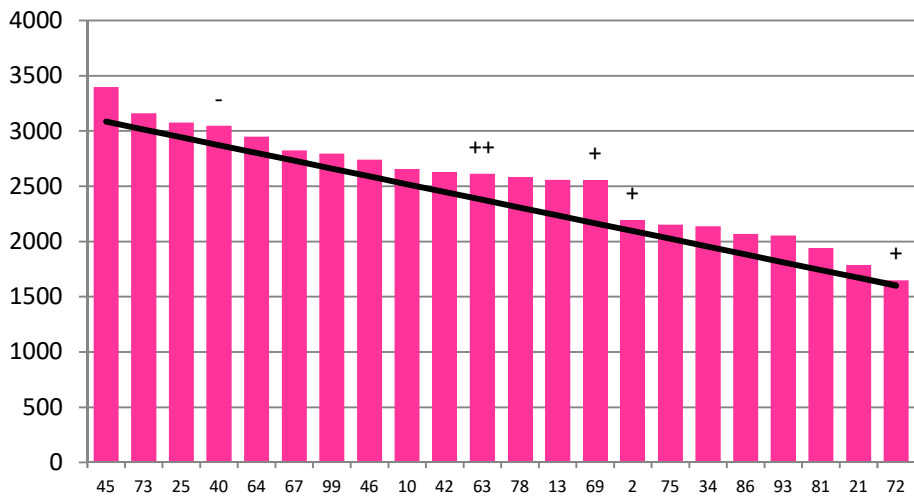


Date 30-01-19

Herd size (cows)	192	Average Cover	2528
Target residual (kg DM/ha)	1600	Average Growth	53
Target intake (kg DM/cow)	17	Farmlet area	64.1
Target Area offered (ha/day)	2.2	Target rotation length	29
Last week actual rotation (d)	29	Target demand	51
Last week supp (kg DM/cow)	0.0	YTD supp (kg DM/cow)	166
Last week N (kg N/ha)	17	Fert N YTD	140
Milk yield (L/cow)	16.9	Effluent N YTD	3
Fat%	N	Last wk MS	W
Prot%	E	YTD MS/cow	E
SCC	X	YTD MS/ha	E
Average BCS	T	% less than BCS 4	K

Herd size (cows)	188	Average Cover	2717
Target residual (kg DM/ha)	1600	Average Growth	51
Target intake (kg DM/cow)	17	Farmlet area	66.4
Target Area offered (ha/day)	2.3	Target rotation length	29
Last week actual rotation (d)	41	Target demand	48
Last week supp (kg DM/cow)	0.0	YTD supp (kg DM/cow)	94
Last week N (kg N/ha)	14	Fert N YTD	123
Milk yield (L/cow)	15.8	Effluent N YTD	2
Fat%	N	Last wk MS	W
Prot%	E	YTD MS/cow	E
SCC	X	YTD MS/ha	E
Average BCS	T	% less than BCS 4	K

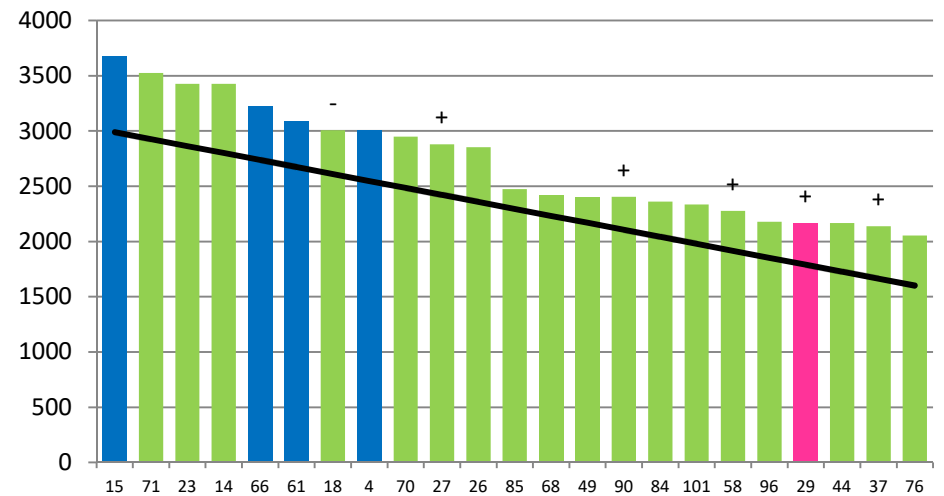
Standard Kale



	45	73	25	40	64	67	99	46	10	42	63	78	13	69	2	75	34	86	93	81	21	72
DaysGrazed3	30	0	16	23	16	27	24	38	13	26	12	18	18	15	1	3	0	10	7	6	4	9
N_3	137	116	110	141	111	116	171	116	76	141	136	137	141	162	110	136	111	135	76	142	170	168
Growth3	100	0	98	102	52	14	78	48	22	58	30	18	46	44	0	0	0	32	0	0	0	0

Farmlet notes: Eff SR = 3.0; Visual APC 2391. Retain current rotation; No conservation; Pdk 72 sprayed, once died right off will be surface worked & resown in PRG & clover; N to be applied to the remaining 7 pdks; capital P application delayed for a couple of weeks; N to be applied to the kale crops; 6-wk incalf rate of 76%

Standard Fodder Beet



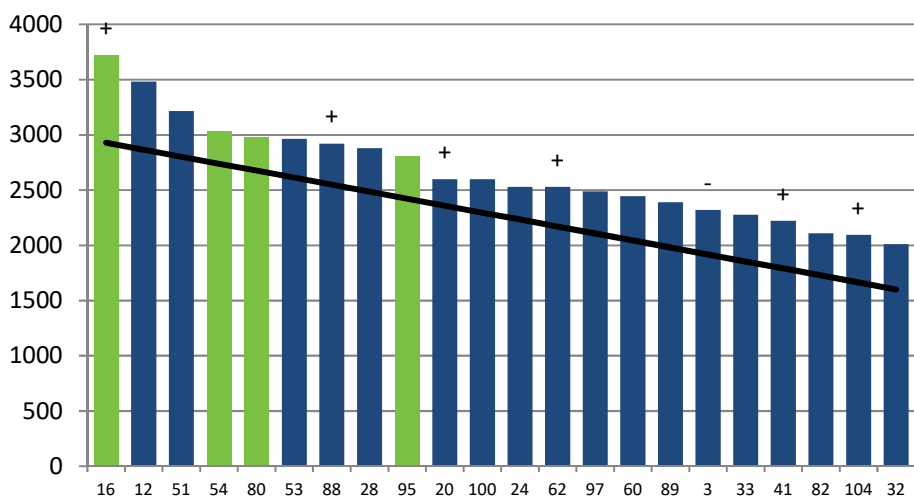
	15	71	23	14	66	61	18	4	70	27	26	85	68	49	90	84	101	58	96	29	44	37	76
DaysGrazed2	17	29	11	32	35	28	25	31	26	13	19	20	7	14	8	22	23	10	5	0	15	2	4
N_2	51	111	51	116	137	111	137	111	116	171	141	141	116	141	141	141	141	141	137	111	116	116	137
Growth2	94	100	62	66	56	62	98	46	56	52	54	28	0	28	22	12	38	14	0	0	34	0	0

Farmlet notes: Eff SR = 2.8; Visual APC 2575. Pdk 4, 15, 61 and 66 dropped for conservation to get cows grazing pastures at the target cover and regain control of residuals; Top pdk 29; Long rotation this week as 2 pdks required an extra 12 hrs grazing; N to be applied to remaining 11 pdks and the FB; P application delayed for a couple of weeks. 6-wk in calf rate 80%

Herd size (cows)	172	Average Cover	2664
Target residual (kg DM/ha)	1600	Average Growth	69
Target intake (kg DM/cow)	17	Farmlet area	63.5
Target Area offered (ha/day)	2.2	Target rotation length	29
Last week rotation avg	35	Target demand	46
Last week supp (kg DM/cow)	0.0	YTD supp (kg DM/cow)	157
Last week N (kg N/ha)	0	Fert N YTD	51
Milk yield	16.3	Effluent N YTD	1
Fat%	N	Last wk MS	W
Prot%	E	YTD MS/cow	E
SCC	X	YTD MS/ha	E
Average BCS	T	% less than BCS 4	K

Herd size (cows)	159	Average Cover	2657
Target residual (kg DM/ha)	1600	Average Growth	52
Target intake (kg DM/cow)	17	Farmlet area	61.3
Target Area offered (ha/day)	2.1	Target rotation length	29
Last week rotation avg	31	Target demand	44
Last week supp (kg DM/cow)	0.0	YTD supp (kg DM/cow)	112
Last week N (kg N/ha)	0	Fert N YTD	53
Milk yield	16.0	Effluent N YTD	3
Fat%	N	Last wk MS	W
Prot%	E	YTD MS/cow	E
SCC	X	YTD MS/ha	E
Average BCS	T	% less than BCS 4	K

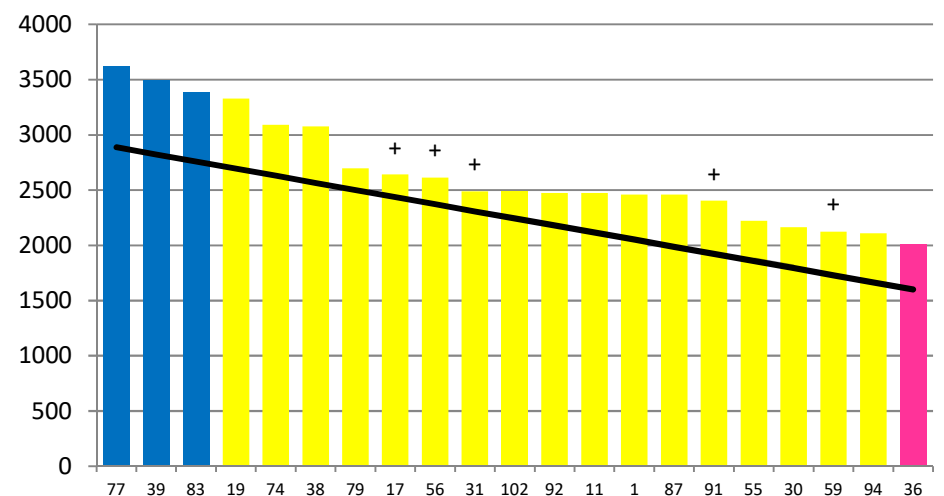
Low Impact Kale



	16	12	51	54	80	53	88	28	95	20	100	24	62	97	60	89	3	33	41	82	104	32
DaysGrazed1	15	14	0	27	27	18	24	20	23	17	26	12	11	10	3	9	21	8	6	5	1	0
N_1	32	51	42	50	50	50	50	50	50	50	50	50	50	50	92	50	50	50	50	50	56	62
Growth1	166	160	0	64	68	52	46	82	62	82	54	34	48	32	0	52	46	52	0	0	0	0

Farmlet notes: Eff SR = 2.7. Visual APC 2569. Pdk 16, 54, 80, 95 dropped for conservation to get cows going into target pre-graze covers and regain control of residuals; No N; waiting on helicopter to apply N to kale pdks; 6-wk in calf rate of 80%. P application delayed for a couple of weeks.

Low Impact Fodder Beet



	77	39	83	19	74	38	79	17	56	31	102	92	11	1	87	91	55	30	59	94	36	
DaysGrazed4	5	37	32	1	23	25	22	17	13	5	26	10	7	11	11	8	14	16	4	2	0	
N_4	50	50	50	75	50	50	50	50	50	50	50	51	51	50	50	80	50	50	50	50	50	62
Growth4	0	64	80	0	82	88	24	34	54	0	38	76	0	46	42	44	18	42	0	0	0	

Farmlet notes: Eff SR = 2.6. Visual APC 2575. Pdk 39, 77, 83 dropped for conservation to get cows going into target pre-graze covers and regain control of residuals; Pdk 36 to be topped; No N; waiting on helicopter to apply N to FB pdks; 6-wk in calf rate of 72%. P application delayed for a couple of weeks.