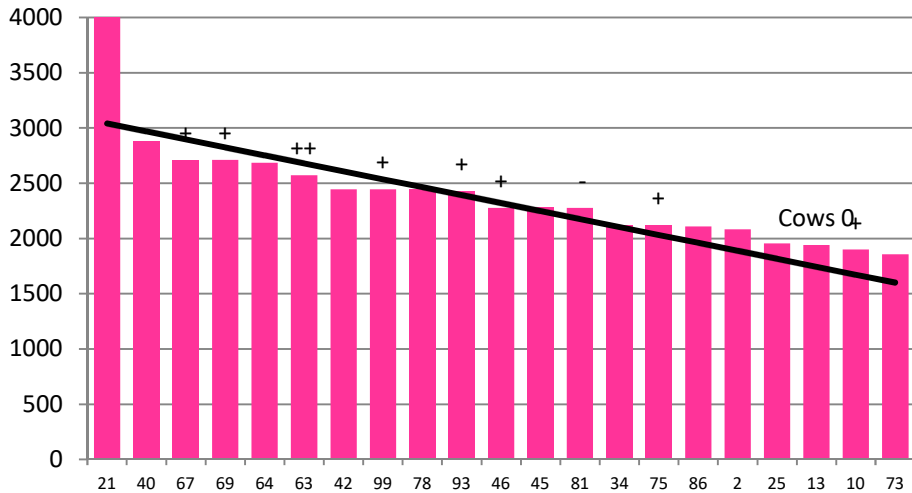


Date 06-03-19

|                               |      |                        |      |
|-------------------------------|------|------------------------|------|
| Herd size (cows)              | 189  | Average Cover          | 2395 |
| Target residual (kg DM/ha)    | 1600 | Average Growth         | 34   |
| Target intake (kg DM/cow)     | 16   | Farmlet area           | 61.2 |
| Target Area offered (ha/day)  | 2.1  | Target rotation length | 29   |
| Last week actual rotation (d) | 30   | Target demand          | 49   |
| Last week supp (kg DM/cow)    | 0.0  | YTD supp (kg DM/cow)   | 168  |
| Last week N (kg N/ha)         | 0    | Fert N YTD             | 149  |
| Milk yield (L/cow)            | 14.4 | Effluent N YTD         | 0    |
| Fat%                          | 5.3  | Last wk MS             | 1.5  |
| Prot%                         | 4.3  | YTD MS/cow             | 362  |
| SCC                           | 149  | YTD MS/ha              | 1133 |
| Average BCS                   | 4.3  | % less than BCS 4      | 6%   |

|                               |      |                        |      |
|-------------------------------|------|------------------------|------|
| Herd size (cows)              | 187  | Average Cover          | 2615 |
| Target residual (kg DM/ha)    | 1600 | Average Growth         | 36   |
| Target intake (kg DM/cow)     | 16   | Farmlet area           | 66.4 |
| Target Area offered (ha/day)  | 2.3  | Target rotation length | 29   |
| Last week actual rotation (d) | 32   | Target demand          | 45   |
| Last week supp (kg DM/cow)    | 0.0  | YTD supp (kg DM/cow)   | 99   |
| Last week N (kg N/ha)         | 0    | Fert N YTD             | 134  |
| Milk yield (L/cow)            | 13.7 | Effluent N YTD         | 0    |
| Fat%                          | 5.1  | Last wk MS             | 1.5  |
| Prot%                         | 4.2  | YTD MS/cow             | 357  |
| SCC                           | 172  | YTD MS/ha              | 1021 |
| Average BCS                   | 4.3  | % less than BCS 4      | 10%  |

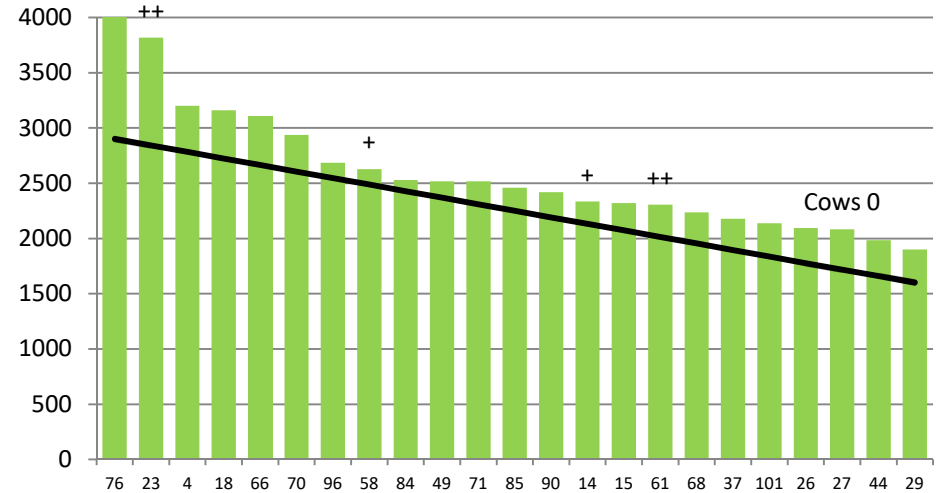
### Standard Kale



|             |     |     |     |     |     |     |     |     |     |    |     |     |     |     |     |     |     |     |     |    |     |
|-------------|-----|-----|-----|-----|-----|-----|-----|-----|-----|----|-----|-----|-----|-----|-----|-----|-----|-----|-----|----|-----|
|             | 21  | 40  | 67  | 69  | 64  | 63  | 42  | 99  | 78  | 93 | 46  | 45  | 81  | 34  | 75  | 86  | 2   | 25  | 13  | 10 | 73  |
| DaysGrazed3 | 39  | 26  | 24  | 22  | 22  | 16  | 22  | 22  | 20  | 18 | 5   | 6   | 15  | 8   | 10  | 12  | 9   | 2   | 0   | 6  | 2   |
| N_3         | 170 | 141 | 141 | 162 | 137 | 136 | 141 | 171 | 137 | 76 | 141 | 162 | 142 | 137 | 136 | 135 | 136 | 136 | 141 | 76 | 141 |
| Growth3     | 62  | 16  | 12  | 18  | 12  | 2   | 10  | 24  | 52  | 70 | 0   | 0   | 50  | 28  | 60  | 66  | 24  | 0   | 0   | 0  | 0   |

Farmlet notes: Eff SR = 3.0; Visual APC 2340; grazing no faster than 36 hrs/pdk; inshed feeding of PKE at 1 kg DM/cow/d; may require silage if demand exceeds growth; complete N application to pasture and the 2nd side dressing of 69 kg N/ha to 2nd year kale pdks; Conserve pdk 21 - it is too long and quality is not suitable to bring back into the rotation

### Standard Fodder Beet



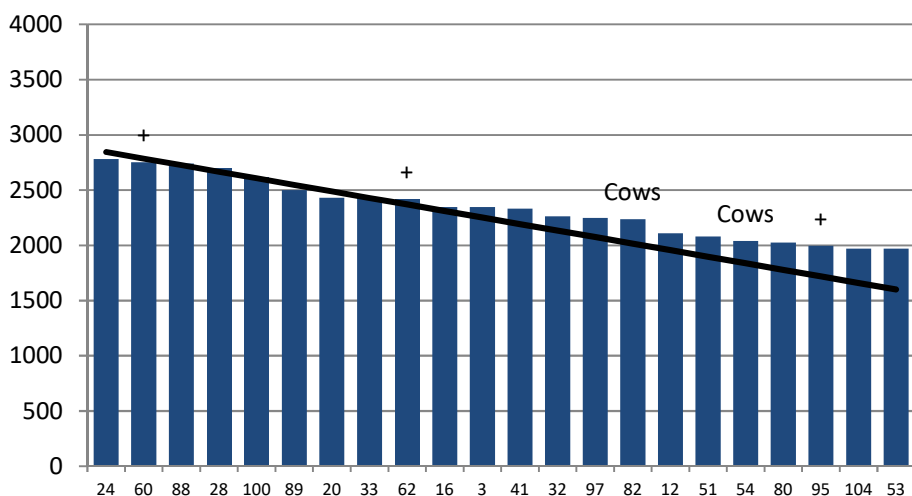
|             |     |    |     |     |     |     |     |     |     |     |     |     |     |     |    |     |     |     |     |     |     |     |     |
|-------------|-----|----|-----|-----|-----|-----|-----|-----|-----|-----|-----|-----|-----|-----|----|-----|-----|-----|-----|-----|-----|-----|-----|
|             | 76  | 23 | 4   | 18  | 66  | 70  | 96  | 58  | 84  | 49  | 71  | 85  | 90  | 14  | 15 | 61  | 68  | 37  | 101 | 26  | 27  | 44  | 29  |
| DaysGrazed2 | 39  | 27 | 30  | 1   | 30  | 30  | 20  | 15  | 24  | 16  | 1   | 20  | 18  | 10  | 6  | 5   | 12  | 8   | 22  | 2   | 0   | 10  | 6   |
| N_2         | 137 | 51 | 137 | 137 | 162 | 141 | 137 | 141 | 141 | 141 | 137 | 141 | 141 | 141 | 76 | 137 | 116 | 141 | 141 | 141 | 171 | 141 | 137 |
| Growth2     | 86  | 26 | 66  | 0   | 44  | 30  | 58  | 38  | 38  | 10  | 0   | 36  | 40  | 10  | 0  | 0   | 6   | 34  | 42  | 0   | 0   | 8   | 0   |

Farmlet notes: Eff SR = 2.8; Visual APC 2482; grazing no faster than 36 hrs/pdk; No supplement required; monitor residuals and days per pdk and adjust allocation if required; complete N application to pasture; Conserve pdks 76 & 23 - both are too long and quality not suitable to bring back into the rotation; Graze sick herd in pdk 18.

|                              |      |                        |      |
|------------------------------|------|------------------------|------|
| Herd size (cows)             | 171  | Average Cover          | 2336 |
| Target residual (kg DM/ha)   | 1600 | Average Growth         | 28   |
| Target intake (kg DM/cow)    | 16   | Farmlet area           | 63.5 |
| Target Area offered (ha/day) | 2.2  | Target rotation length | 29   |
| Last week rotation avg       | 32   | Target demand          | 43   |
| Last week supp (kg DM/cow)   | 0.0  | YTD supp (kg DM/cow)   | 160  |
| Last week N (kg N/ha)        | 0    | Fert N YTD             | 51   |
| Milk yield                   | 13.4 | Effluent N YTD         | 0    |
| Fat%                         | 5.8  | Last wk MS             | 1.3  |
| Prot%                        | 4.4  | YTD MS/cow             | 362  |
| SCC                          | 154  | YTD MS/ha              | 988  |
| Average BCS                  | 4.3  | % less than BCS 4      | 2%   |

|                              |      |                        |      |
|------------------------------|------|------------------------|------|
| Herd size (cows)             | 157  | Average Cover          | 2315 |
| Target residual (kg DM/ha)   | 1600 | Average Growth         | 27   |
| Target intake (kg DM/cow)    | 16   | Farmlet area           | 61.3 |
| Target Area offered (ha/day) | 2.1  | Target rotation length | 29   |
| Last week rotation avg       | 27   | Target demand          | 41   |
| Last week supp (kg DM/cow)   | 1.5  | YTD supp (kg DM/cow)   | 138  |
| Last week N (kg N/ha)        | 16   | Fert N YTD             | 70   |
| Milk yield                   | 13.3 | Effluent N YTD         | 1    |
| Fat%                         | 5.5  | Last wk MS             | 1.5  |
| Prot%                        | 4.4  | YTD MS/cow             | 363  |
| SCC                          | 107  | YTD MS/ha              | 959  |
| Average BCS                  | 4.3  | % less than BCS 4      | 5%   |

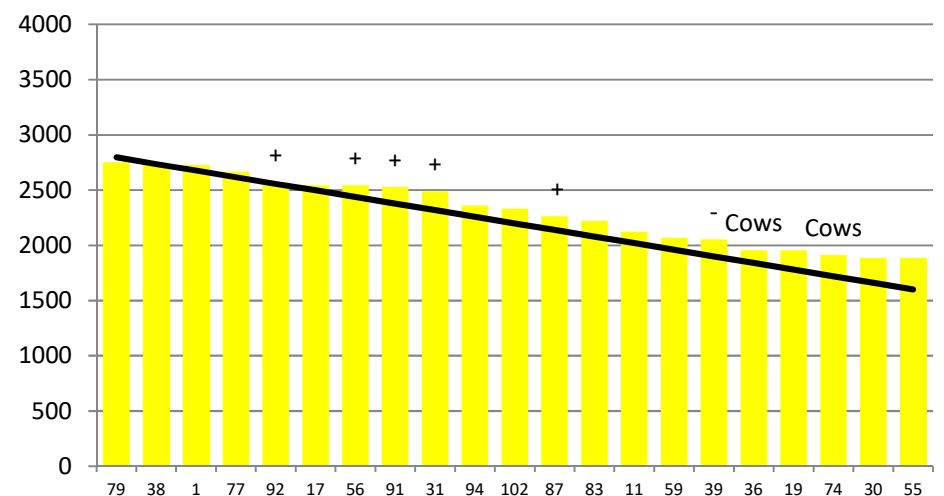
### Low Impact Kale



|             |    |    |    |    |     |    |    |    |    |    |    |    |    |    |    |    |    |    |    |    |     |     |
|-------------|----|----|----|----|-----|----|----|----|----|----|----|----|----|----|----|----|----|----|----|----|-----|-----|
|             | 24 | 60 | 88 | 28 | 100 | 89 | 20 | 33 | 62 | 16 | 3  | 41 | 32 | 97 | 82 | 12 | 51 | 54 | 80 | 95 | 104 | 53  |
| DaysGrazed1 | 19 | 24 | 31 | 27 | 30  | 15 | 22 | 16 | 14 | 11 | 21 | 18 | 9  | 3  | 7  | 3  | 2  | 0  | 1  | 6  | 10  | 26  |
| N_1         | 50 | 92 | 50 | 50 | 50  | 50 | 50 | 50 | 50 | 32 | 50 | 50 | 62 | 50 | 50 | 51 | 42 | 50 | 50 | 50 | 56  | 50  |
| Growth1     | 34 | 40 | 52 | 28 | 38  | 72 | 22 | 26 | 16 | 42 | 34 | 28 | 8  | 0  | 0  | 0  | 0  | 0  | 0  | 0  | 24  | -44 |

Farmlet notes: Eff SR = 2.7. Visual APC 2311; grazing no faster than 36 hrs/pdk; Assess residuals and if below 1600 kg DM/ha commence inshed feeding of PKE at 1 kg DM/cow/d; start last round of N application to pasture and apply 2nd side dressing of 69 kg N/ha to 2nd year kale pdks; aim to push out to 35 day rotation.

### Low Impact Fodder Beet



|             |    |    |    |    |    |    |    |     |    |    |     |    |    |    |    |    |    |     |    |    |    |
|-------------|----|----|----|----|----|----|----|-----|----|----|-----|----|----|----|----|----|----|-----|----|----|----|
|             | 79 | 38 | 1  | 77 | 92 | 17 | 56 | 91  | 31 | 94 | 102 | 87 | 83 | 11 | 59 | 39 | 36 | 19  | 74 | 30 | 55 |
| DaysGrazed4 | 27 | 32 | 25 | 30 | 22 | 24 | 20 | 19  | 1  | 14 | 30  | 15 | 5  | 8  | 11 | 2  | 7  | 2   | 0  | 12 | 8  |
| N_4         | 50 | 50 | 50 | 50 | 51 | 75 | 50 | 105 | 50 | 75 | 75  | 75 | 75 | 76 | 75 | 75 | 87 | 126 | 50 | 75 | 75 |
| Growth4     | 38 | 24 | 19 | 24 | 40 | 25 | 8  | 60  | 0  | 36 | 30  | 34 | 0  | 42 | 16 | 0  | 0  | 0   | 0  | 4  | 6  |

Farmlet notes: Eff SR = 2.6. Visual APC 2254; grazing no faster than 36 hrs/pdk; continue with 1 bale baleage/pdk (1.5 kg DM/cow); monitor residuals and days per pdk and adjust supplement to 1.5 bales/pdk if residuals below 1600kg DM/ha after 36 hrs; complete N application to pasture;