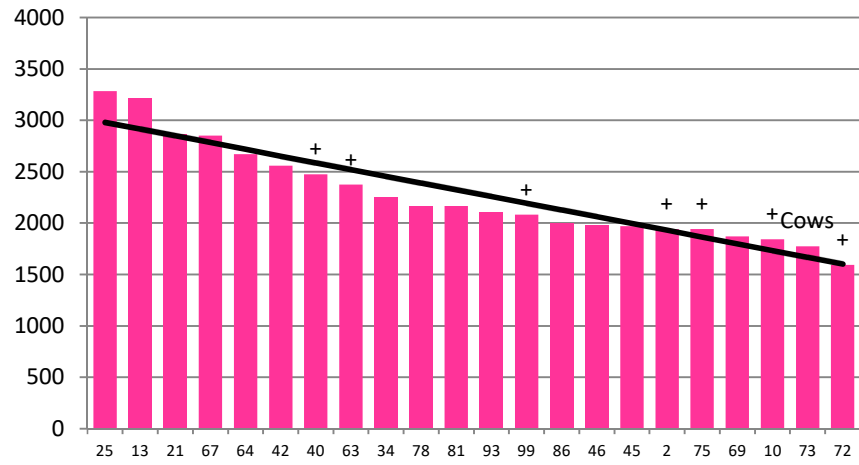


Date 03-04-19

Herd size (cows)	181	Average Cover	2272
Target residual (kg DM/ha)	1600	Average Growth	27
Target intake (kg DM/cow)	16	Farmlet area	64.1
Target Area offered (ha/day)	2.1	Target rotation length	31
Last week actual rotation (d)	38	Target demand	45
Last week supp (kg DM/cow)	0.7	YTD supp (kg DM/cow)	194
Last week N (kg N/ha)	0	Fert N YTD	172
Milk yield (L/cow)	11.3	Effluent N YTD	0
Fat%	N	Last wk MS	W
Prot%	E	YTD MS/cow	E
SCC	X	YTD MS/ha	E
Average BCS	4.4	% less than BCS 4	3%

### Standard Kale

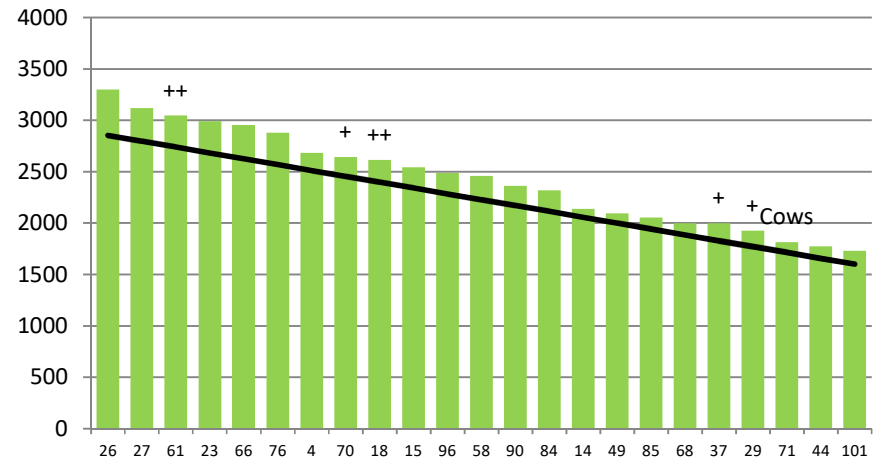


	25	13	21	67	64	42	40	63	34	78	81	93	99	86	46	45	2	75	69	10	73	72
DaysGrazed3	30	28	23	27	22	23	25	19	21	14	13	17	16	10	5	7	2	8	4	11	0	72
N_3	161	166	196	166	162	166	166	161	162	162	167	76	171	160	166	187	161	161	182	101	166	168
Growth3	60	106	66	22	32	4	12	24	6	6	28	34	2	36	0	0	0	18	0	-6	0	16

Farmlet notes: Eff SR = 3.0; Visual APC 2315; growth rate likely lower due to plating conditions (visual growth 42); maintain current rotation; pdk 13 for 48 hrs, may require silage; apply 25kg N/ha to 70% of farm early next week; empty culls to go as soon as we have space; Kale ylds 10.2 to 11.7 T DM/ha; bales onto crop pdks this week; stinging nettle in new grass

Herd size (cows)	180	Average Cover	2429
Target residual (kg DM/ha)	1600	Average Growth	29
Target intake (kg DM/cow)	16	Farmlet area	66.4
Target Area offered (ha/day)	2.3	Target rotation length	29
Last week actual rotation (d)	40	Target demand	43
Last week supp (kg DM/cow)	0.0	YTD supp (kg DM/cow)	99
Last week N (kg N/ha)	0	Fert N YTD	160
Milk yield (L/cow)	12.3	Effluent N YTD	0
Fat%	N	Last wk MS	W
Prot%	E	YTD MS/cow	E
SCC	X	YTD MS/ha	E
Average BCS	4.3	% less than BCS 4	8%

### Standard Fodder Beet

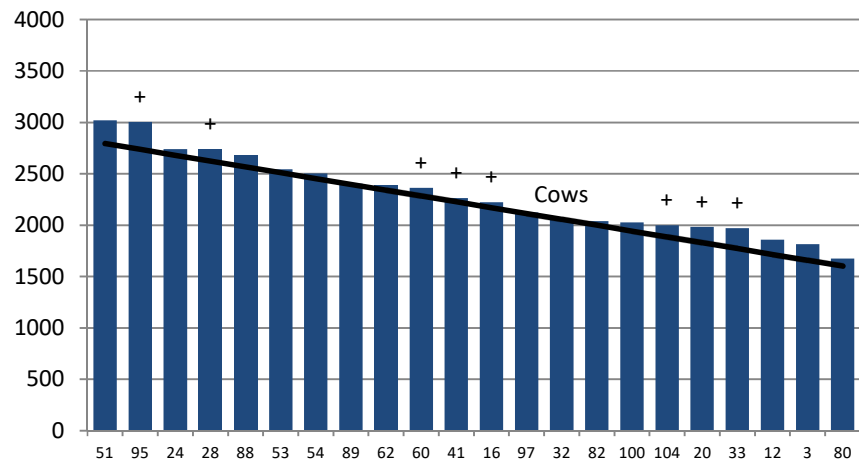


	26	27	61	23	66	76	4	70	18	15	96	58	90	84	14	49	85	68	37	29	71	44	101
DaysGrazed2	30	27	33	23	27	23	25	24	11	8	22	19	19	21	12	17	13	7	5	4	0	2	15
N_2	166	196	162	76	187	162	162	166	162	101	162	166	166	166	166	166	166	166	166	162	162	166	166
Growth2	66	60	-2	46	14	34	58	12	34	90	68	24	-4	36	10	-28	4	0	0	0	0	0	4

Farmlet notes: Eff SR = 2.8; Visual APC 2436; growth rate likely lower due to plating conditions (visual growth 43); maintain current rotation; pdks 61 & 26 cut for baleage; pdk 27 for 48 hrs; only cull if extra space is available; apply 25kg N/ha to 70% of farm early next week; Cows back into pdks to achieve residuals as required; bales onto crop pdks this week

Herd size (cows)	164	Average Cover	2292
Target residual (kg DM/ha)	1600	Average Growth	24
Target intake (kg DM/cow)	16	Farmlet area	63.5
Target Area offered (ha/day)	2.2	Target rotation length	29
Last week rotation avg	39	Target demand	41
Last week supp (kg DM/cow)	0.0	YTD supp (kg DM/cow)	176
Last week N (kg N/ha)	0	Fert N YTD	74
Milk yield	12.2	Effluent N YTD	0
Fat%	N	Last wk MS	W
Prot%	E	YTD MS/cow	E
SCC	X	YTD MS/ha	E
Average BCS	4.4	% less than BCS 4	6%

### Low Impact Kale

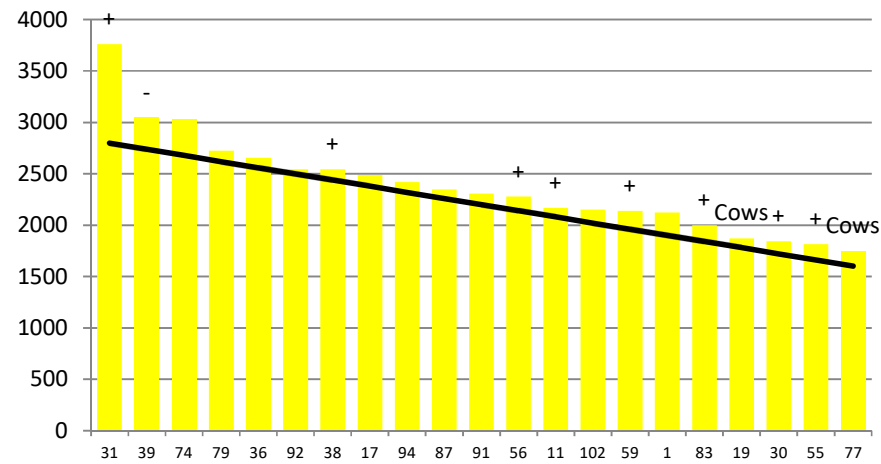


	51	95	24	28	88	53	54	89	62	60	41	16	97	32	82	100	104	20	33	12	3	80
DaysGrazed1	30	34	21	27	26	23	28	15	16	19	10	8	13	0	7	23	10	18	5	3	12	1
N_1	68	75	50	75	75	75	75	75	75	92	75	57	75	87	75	75	81	75	75	76	75	75
Growth1	36	24	68	10	40	8	10	40	88	-14	8	44	6	0	0	-4	12	32	0	0	8	0

Farmlet notes: Eff SR = 2.7. Visual APC 2384; Visual APC growth rate likely lower due to plating conditions (visual growth 42); pdk 88 for 48 h grazing; Kale yields 8.4 to 12.8 T DM/ha. Low yld in pdk 65 affected by floods in Nov & duck damage; All N applications complete; culls to stay unless extra space is available; OAD & dry off plan complete; bales onto crop pdks this week.

Herd size (cows)	157	Average Cover	2379
Target residual (kg DM/ha)	1600	Average Growth	25
Target intake (kg DM/cow)	16	Farmlet area	61.3
Target Area offered (ha/day)	2.1	Target rotation length	29
Last week rotation avg	41	Target demand	41
Last week supp (kg DM/cow)	0.0	YTD supp (kg DM/cow)	148
Last week N (kg N/ha)	0	Fert N YTD	81
Milk yield	11.9	Effluent N YTD	1
Fat%	N	Last wk MS	W
Prot%	E	YTD MS/cow	E
SCC	X	YTD MS/ha	E
Average BCS	4.3	% less than BCS 4	8%

### Low Impact Fodder Beet



	31	39	74	79	36	92	38	17	94	87	91	56	11	102	59	1	83	19	30	55	77
DaysGrazed4	29	30	27	25	35	20	24	13	17	14	16	9	2	22	11	19	4	0	6	8	0
N_4	75	75	75	75	87	76	75	75	75	75	105	100	76	75	75	75	75	126	75	75	75
Growth4	114	10	36	28	2	40	16	34	22	26	16	24	0	4	-2	38	0	0	0	-6	0

Farmlet notes: Eff SR = 2.6. Visual APC growth rate likely lower due to plating conditions (visual growth 38); maintain current rotation; pdk 39 for 48 hrs; only cull if extra space is available; All N applications complete; bales onto crop pdks this week; OAD and dry off plan complete