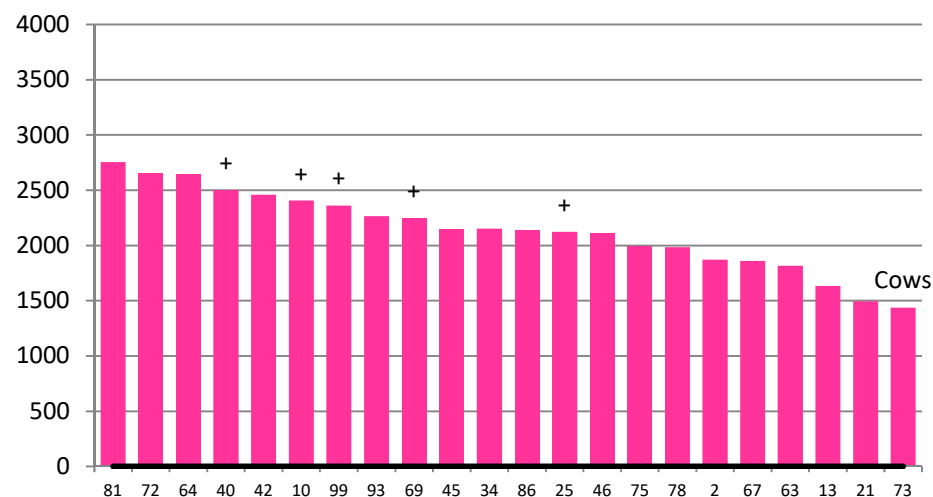


Date 22-05-19

Herd size (cows)	159	Average Cover	2140
Target residual (kg DM/ha)		Average Growth	18
Target pasture intake (kg DM/cow)	0	Farmlet area	64.1
Target Area offered (ha/day)	0	Target rotation length	#DIV/0!
Last week actual rotation (d)	47	Target demand	0
Last week supp (kg DM/cow)	6.4	YTD supp (kg DM/cow)	360
Last week N (kg N/ha)	0	Fert N YTD	188
Milk yield (L/cow)	8.9	Effluent N YTD	0
Fat%	N	Last wk MS	W
Prot%	E	YTD MS/cow	E
SCC	X	YTD MS/ha	E
Average BCS	T	% less than BCS 4	K

### Standard Kale

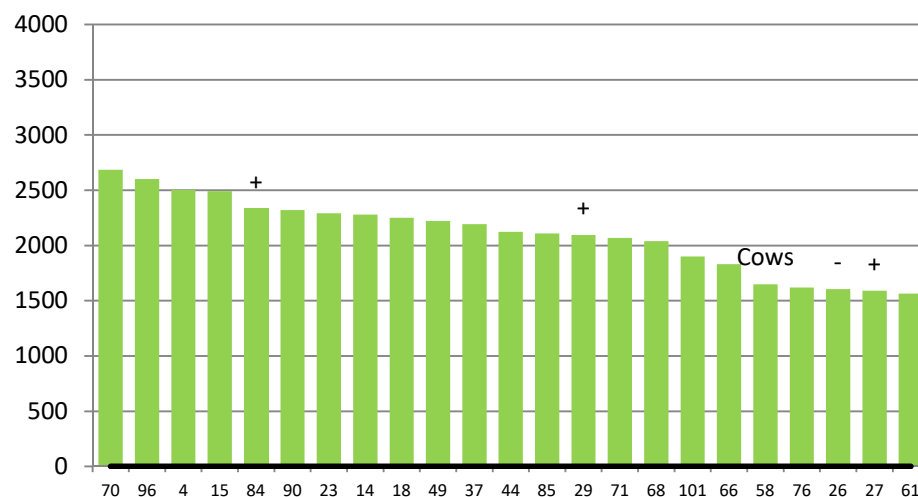


	81	72	64	40	42	10	99	93	69	45	34	86	25	46	75	78	2	67	63	13	21	73
DaysGrazed3	30	4	41	38	40	23	29	25	19	21	15	27	11	13	10	15	9	8	2	6	4	0
N_3	193	168	162	166	166	127	196	101	208	212	187	186	186	192	186	162	186	166	161	166	196	192
Growth3	44	0	28	28	8	4	10	4	20	24	2	14	36	16	28	4	30	4	0	0	0	0

Farmlet notes: Eff SR = 2.5; Visual APC 2112; All cows dried off and transitioning onto kale; targeting 11.5 kg DM kale & 3.3kg DM baleage; starting at 5 kg DM kale & increasing by 1 kg DM/d; remainder of diet as baleage; R2's to graze x1 pdk when they return next wk to drop APC to 31st May target; wintering mobs to be resorted once R2's transitioned to crop;

Herd size (cows)	168	Average Cover	2102
Target residual (kg DM/ha)		Average Growth	18
Target pasture intake (kg DM/cow)	0	Farmlet area	66.4
Target Area offered (ha/day)	0	Target rotation length	#DIV/0!
Last week actual rotation (d)	50	Target demand	0
Last week supp (kg DM/cow)	7.0	YTD supp (kg DM/cow)	280
Last week N (kg N/ha)	0	Fert N YTD	170
Milk yield (L/cow)	8.0	Effluent N YTD	0
Fat%	N	Last wk MS	W
Prot%	E	YTD MS/cow	E
SCC	X	YTD MS/ha	E
Average BCS	T	% less than BCS 4	K

### Standard Fodder Beet

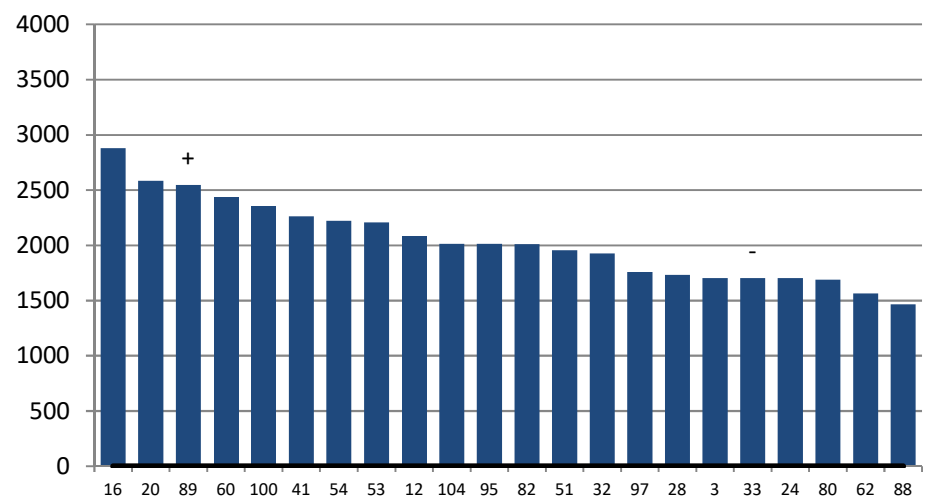


	70	96	4	15	84	90	23	14	18	49	37	44	85	29	71	68	101	66	58	76	26	27	61
DaysGrazed2	39	9	40	23	37	34	17	28	12	25	21	12	29	15	13	19	26	6	0	8	10	2	4
N_2	166	162	162	127	166	166	76	192	162	166	192	192	166	187	187	192	166	212	192	162	166	196	162
Growth2	34	30	2	4	28	16	22	4	4	17	30	50	28	10	24	6	4	0	0	8	16	0	0

Farmlet notes: Eff SR = 2.5; Visual APC 2087; All cows dried off and continuing transition onto FB; targeting 10.5 kg DM FB & 3.5 kg DM baleage; starting at 4 kg DM FB & increasing by 1 kg DM/2 days; remainder of diet as baleage; R2's to graze x1 pdk when return next wk, to drop APC to 31st May target; wintering mobs to be resorted once R2's transitioned to crop;

Herd size (cows)	153	Average Cover	2036
Target residual (kg DM/ha)		Average Growth	18
Target pasture intake (kg DM/cow)	0	Farmlet area	63.5
Target Area offered (ha/day)	0	Target rotation length	#DIV/0!
Last week rotation avg	43	Target demand	0
Last week supp (kg DM/cow)	4.9	YTD supp (kg DM/cow)	348
Last week N (kg N/ha)	0	Fert N YTD	76
Milk yield	8.2	Effluent N YTD	0
Fat%	N	Last wk MS	W
Prot%	E	YTD MS/cow	E
SCC	X	YTD MS/ha	E
Average BCS	T	% less than BCS 4	K

### Low Impact Kale

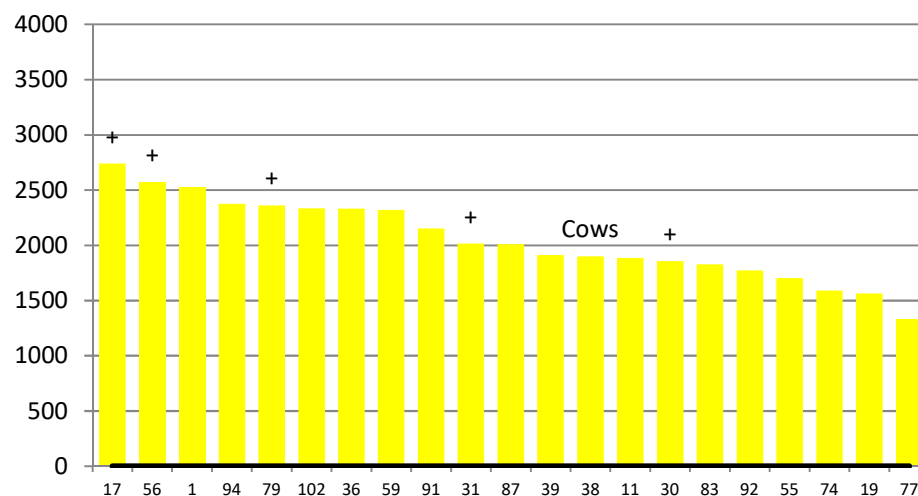


	16	20	89	60	100	41	54	53	12	104	95	82	51	32	97	28	3	33	24	80	62	88
DaysGrazed1	28	6	30	35	36	24	18	16	17	20	11	19	6	9	1	8	22	15	5	13	1	3
N_1	82	75	75	92	75	75	75	75	76	81	75	75	68	87	75	75	75	75	50	75	75	75
Growth1	14	0	4	4	6	25	22	18	0	4	4	30	0	68	0	32	6	16	0	16	0	0

Farmlet notes: Eff SR = 2.4. Visual APC 2029; APC below 31st May target but not by much; All cows dried off this week and transitioning onto crop; targeting 11.5 kg DM kale & 3.3kg DM baleage; starting at 5 kg DM kale & increasing by 1 kg DM/d; remainder of diet as baleage; wintering mobs to be resorted once R2's transitioned to crop;

Herd size (cows)	140	Average Cover	2055
Target residual (kg DM/ha)		Average Growth	13
Target pasture intake (kg DM/cow)	0	Farmlet area	61.3
Target Area offered (ha/day)	0	Target rotation length	#DIV/0!
Last week rotation avg	48	Target demand	0
Last week supp (kg DM/cow)	6.4	YTD supp (kg DM/cow)	294
Last week N (kg N/ha)	0	Fert N YTD	81
Milk yield	7.3	Effluent N YTD	0
Fat%	N	Last wk MS	W
Prot%	E	YTD MS/cow	E
SCC	X	YTD MS/ha	E
Average BCS	T	% less than BCS 4	K

### Low Impact Fodder Beet



	17	56	1	94	79	102	36	59	91	31	87	39	38	11	30	83	92	55	74	19	77
DaysGrazed4	29	27	5	25	41	34	7	21	30	17	23	16	0	14	19	10	8	12	6	4	2
N_4	75	100	75	75	75	75	87	75	105	75	75	75	75	76	75	75	76	75	75	126	75
Growth4	12	6	0	38	19	4	0	18	10	4	4	6	0	4	16	10	34	12	0	0	0

Farmlet notes: Eff SR = 2.3. Visual APC 2055; All cows dried off and continuing transition onto FB; targeting 10.5 kg DM FB & 3.5 kg DM baleage; starting at 4 kg DM FB & increasing by 1 kg DM/2 days; remainder of diet as baleage; wintering mobs to be resorted once R2's transitioned to crop;