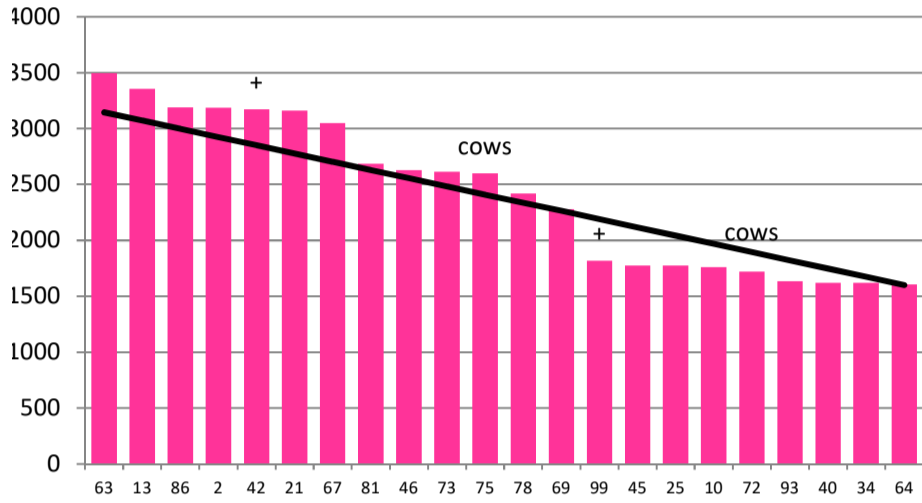


Date 11-09-19

| | | | |
|-----------------------------------|------|------------------------|------|
| Herd size (cows) | 150 | Average Cover | 2416 |
| Target residual (kg DM/ha) | 1600 | Average Growth | 26 |
| Target pasture intake (kg DM/cow) | 17.5 | Farmlet area | 64.1 |
| Target Area offered (ha/day) | 1.7 | Target rotation length | 38 |
| Last week actual rotation (d) | 38 | Target demand | 41 |
| Last week supp (kg DM/cow) | 0.0 | YTD supp (kg DM/cow) | 0 |
| Last week N (kg N/ha) | 0 | Fert N YTD | 0 |
| Milk yield (L/cow) | 20.4 | Effluent N YTD | 0 |
| Fat% | 4.7 | Last wk MS | 2.0 |
| Prot% | 4.0 | YTD MS/cow | 56 |
| SCC | 171 | YTD MS/ha | 174 |
| Average BCS | 4.7 | % less than BCS 4 | 1% |

Standard Kale

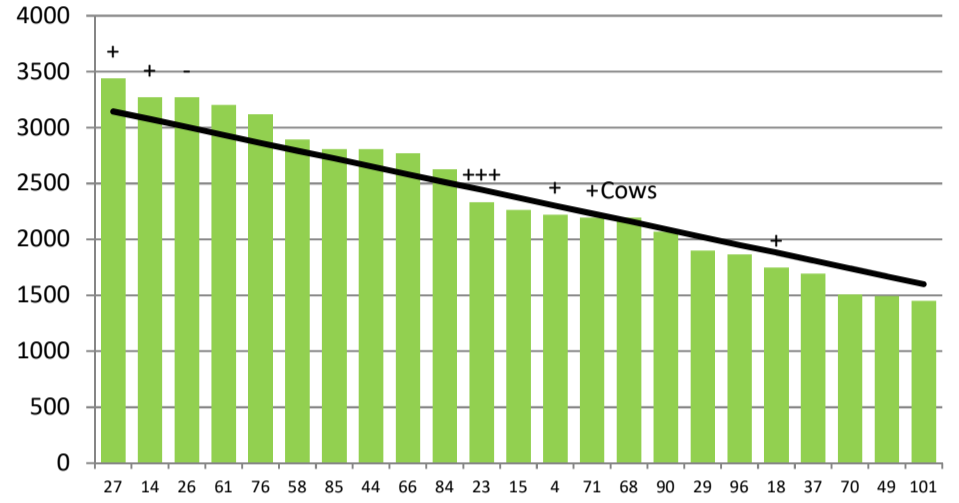


| | | | | | | | | | | | | | | | | | | | | | | |
|-------------|-----|-----|----|-----|----|-----|-----|-----|----|-----|----|-----|----|----|----|----|----|----|----|----|----|----|
| | 63 | 13 | 86 | 2 | 42 | 21 | 67 | 81 | 46 | 73 | 75 | 78 | 69 | 99 | 45 | 25 | 10 | 72 | 93 | 40 | 34 | 64 |
| DaysGrazed3 | 114 | 118 | 0 | 121 | 99 | 116 | 120 | 110 | 4 | 100 | 0 | 127 | 11 | 2 | 2 | 19 | 4 | 0 | 0 | 0 | 0 | 0 |
| N_3 | 0 | 0 | 0 | 0 | 0 | 0 | 0 | 0 | 0 | 0 | 0 | 0 | 0 | 0 | 0 | 0 | 0 | 0 | 0 | 0 | 0 | 0 |
| Growth3 | 34 | 66 | 16 | 22 | 32 | 16 | 64 | 8 | 0 | 6 | 0 | 9 | 42 | 0 | 0 | 18 | 0 | 0 | 0 | 0 | 4 | 0 |

Farmlet notes: Eff SR = 3.1; Visual APC 2370; Visual GR 18; 14% low conditioned cows receiving inshed feeding & 6 % milked OAD; Dries & springers cleaning up milker residuals where necessary resulting in pdks below target line; Ammo N (30 kg/ha) to be applied to all pdks below 2500 kg DM/ha; cows calving before 22nd Aug metrichchecked & treated if dirty;

| | | | |
|-----------------------------------|------|------------------------|------|
| Herd size (cows) | 150 | Average Cover | 2399 |
| Target residual (kg DM/ha) | 1600 | Average Growth | 35 |
| Target pasture intake (kg DM/cow) | 17.5 | Farmlet area | 66.4 |
| Target Area offered (ha/day) | 1.7 | Target rotation length | 39 |
| Last week actual rotation (d) | 50 | Target demand | 40 |
| Last week supp (kg DM/cow) | 0.0 | YTD supp (kg DM/cow) | 0 |
| Last week N (kg N/ha) | 0 | Fert N YTD | 0 |
| Milk yield (L/cow) | 21.6 | Effluent N YTD | 0 |
| Fat% | 4.7 | Last wk MS | 1.9 |
| Prot% | 3.9 | YTD MS/cow | 61 |
| SCC | 148 | YTD MS/ha | 174 |
| Average BCS | 4.8 | % less than BCS 4 | 0% |

Standard Fodder Beet

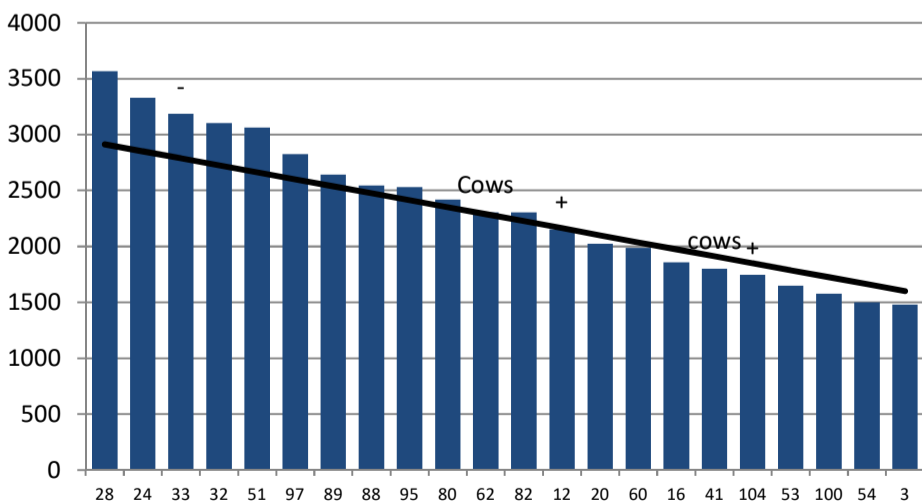


| | | | | | | | | | | | | | | | | | | | | | | | |
|-------------|-----|-----|-----|-----|-----|-----|----|-----|-----|-----|----|----|----|----|----|-----|----|----|----|----|----|----|-----|
| | 27 | 14 | 26 | 61 | 76 | 58 | 85 | 44 | 66 | 84 | 23 | 15 | 4 | 71 | 68 | 90 | 29 | 96 | 18 | 37 | 70 | 49 | 101 |
| DaysGrazed2 | 114 | 100 | 122 | 116 | 120 | 112 | 0 | 124 | 118 | 111 | 10 | 10 | 13 | 7 | 0 | 102 | 1 | 33 | 11 | 35 | 16 | 29 | 1 |
| N_2 | 0 | 0 | 0 | 0 | 0 | 0 | 0 | 0 | 0 | 0 | 0 | 0 | 0 | 0 | 0 | 0 | 0 | 0 | 0 | 0 | 0 | 0 | 0 |
| Growth2 | 60 | 60 | 76 | 21 | 22 | 54 | 70 | 58 | 14 | 34 | 34 | 30 | 12 | 0 | 0 | 6 | 0 | 3 | 21 | 16 | 24 | 42 | 0 |

Farmlet notes: Eff SR = 3.1; Visual APC 2306; Visual GR 19; 5% of light cows on OAD in colostrum mob; 14 dry cows on FB to be tightened up to prevent extra BCS gain; Springers cleaning up milker residuals if necessary; Ammo N (30 kg N/ha) to be applied to all pdks below 2500 kg DM/ha; cows calving before 22nd Aug metrichchecked & treated if dirty.

| | | | |
|-----------------------------------|------|------------------------|------|
| Herd size (cows) | 120 | Average Cover | 2352 |
| Target residual (kg DM/ha) | 1600 | Average Growth | 33 |
| Target pasture intake (kg DM/cow) | 17.5 | Farmlet area | 63.5 |
| Target Area offered (ha/day) | 1.6 | Target rotation length | 40 |
| Last week rotation avg | 30 | Target demand | 33 |
| Last week supp (kg DM/cow) | 0.0 | YTD supp (kg DM/cow) | 0 |
| Last week N (kg N/ha) | 0 | Fert N YTD | 0 |
| Milk yield | 20.1 | Effluent N YTD | 0 |
| Fat% | 4.6 | Last wk MS | 2.1 |
| Prot% | 4.0 | YTD MS/cow | 59 |
| SCC | 145 | YTD MS/ha | 159 |
| Average BCS | 4.7 | % less than BCS 4 | 1% |

Low Impact Kale

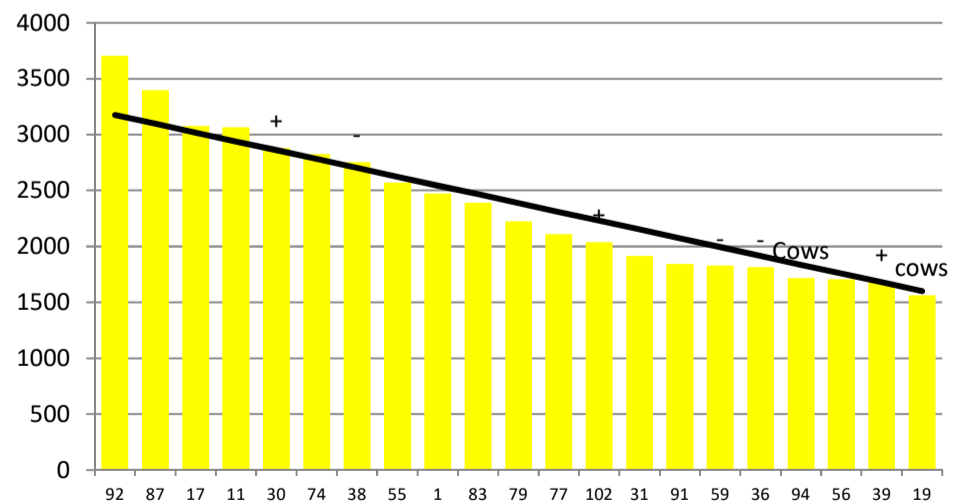


| | | | | | | | | | | | | | | | | | | | | | | |
|-------------|----|-----|-----|-----|-----|-----|-----|-----|-----|-----|----|-----|----|----|----|----|----|-----|----|-----|----|----|
| | 28 | 24 | 33 | 32 | 51 | 97 | 89 | 88 | 95 | 80 | 62 | 82 | 12 | 20 | 60 | 16 | 41 | 104 | 53 | 100 | 54 | 3 |
| DaysGrazed1 | 1 | 117 | 127 | 121 | 118 | 113 | 112 | 115 | 123 | 125 | 0 | 131 | 7 | 28 | 11 | 17 | 0 | 5 | 2 | 3 | 2 | 11 |
| N_1 | 0 | 0 | 0 | 0 | 0 | 0 | 0 | 0 | 0 | 0 | 0 | 0 | 0 | 0 | 0 | 0 | 0 | 0 | 0 | 0 | 0 | 0 |
| Growth1 | 0 | 86 | 30 | 70 | 36 | 46 | 32 | 4 | 32 | 0 | 0 | 7 | 0 | 16 | 36 | 14 | 0 | 0 | 0 | 0 | 0 | 20 |

Farmlet notes: Eff SR = 2.6. Visual APC 2270; Visual GR 30; 10% low conditioned cows receiving inshed feeding & 6 % milked OAD; Dries & springers cleaning up milker residuals where necessary; Ammo N (20 kg/ha) to be applied to all pdks below 2500 kg DM/ha; cows calving before 22nd Aug metrichchecked & treated if dirty; Area used = SRP target

| | | | |
|-----------------------------------|------|------------------------|------|
| Herd size (cows) | 135 | Average Cover | 2361 |
| Target residual (kg DM/ha) | 1600 | Average Growth | 21 |
| Target pasture intake (kg DM/cow) | 17.5 | Farmlet area | 61.3 |
| Target Area offered (ha/day) | 1.5 | Target rotation length | 41 |
| Last week rotation avg | 42 | Target demand | 39 |
| Last week supp (kg DM/cow) | 0.0 | YTD supp (kg DM/cow) | 0 |
| Last week N (kg N/ha) | 0 | Fert N YTD | 0 |
| Milk yield | 20.0 | Effluent N YTD | 0 |
| Fat% | 4.8 | Last wk MS | 1.9 |
| Prot% | 4.0 | YTD MS/cow | 57 |
| SCC | 156 | YTD MS/ha | 151 |
| Average BCS | 4.9 | % less than BCS 4 | 0% |

Low Impact Fodder Beet



| | | | | | | | | | | | | | | | | | | | | | |
|-------------|-----|----|----|-----|-----|-----|-----|-----|---|-----|----|-----|-----|----|----|----|----|----|----|----|----|
| | 92 | 87 | 17 | 11 | 30 | 74 | 38 | 55 | 1 | 83 | 79 | 77 | 102 | 31 | 91 | 59 | 36 | 94 | 56 | 39 | 19 |
| DaysGrazed4 | 120 | 0 | 0 | 126 | 131 | 118 | 111 | 124 | 3 | 122 | 0 | 114 | 12 | 16 | 5 | 22 | 23 | 7 | 14 | 1 | 0 |
| N_4 | 0 | 0 | 0 | 0 | 0 | 0 | 0 | 0 | 0 | 0 | 0 | 0 | 0 | 0 | 0 | 0 | 0 | 0 | 0 | 0 | 0 |
| Growth4 | 28 | 26 | 6 | 2 | 36 | 34 | 30 | 10 | 0 | 0 | 0 | 32 | 34 | 4 | 0 | 20 | 9 | 0 | 26 | 0 | 0 |

Farmlet notes: Eff SR = 2.6. Visual APC 2373; Visual GR 26; No light cows on OAD; 18 dry cows on FB to be tightened up to prevent extra BCS gain; Springers cleaning up milker residuals if necessary; Ammo N (20 kg N/ha) to be applied to all pdks below 2500 kg DM/ha; cows calving before 22nd Aug metrichchecked & treated if dirty. This herd is the tightest for feed.