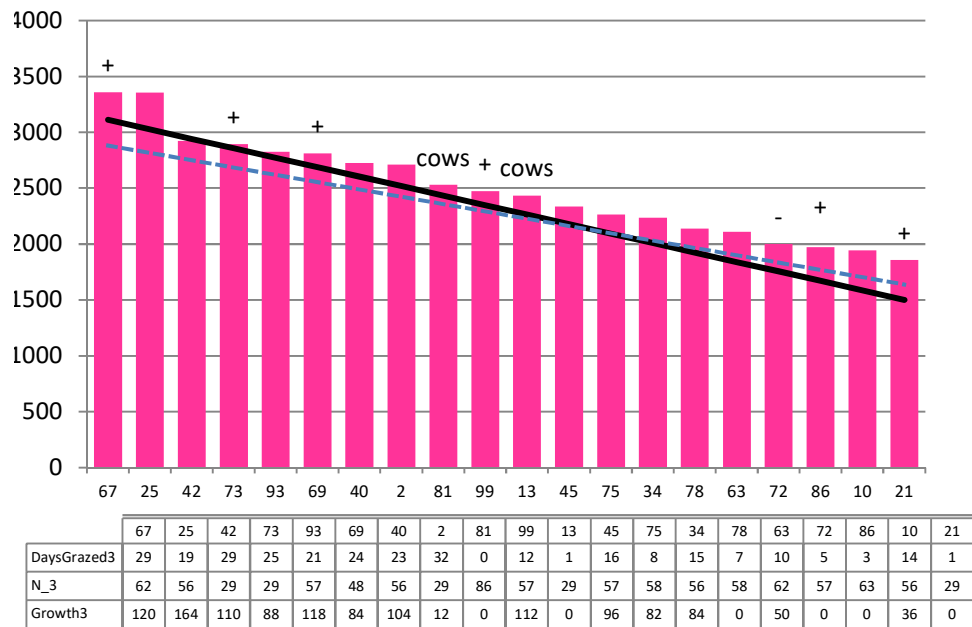


Date 23-10-19

|                                   |      |                        |      |
|-----------------------------------|------|------------------------|------|
| Herd size (cows)                  | 180  | Average Cover          | 2495 |
| Target residual (kg DM/ha)        | 1500 | Average Growth         | 90   |
| Target pasture intake (kg DM/cow) | 17   | Farmlet area           | 57.9 |
| Target Area offered (ha/day)      | 1.9  | Target rotation length | 30   |
| Last week actual rotation (d)     | 35   | Target demand          | 53   |
| Last week supp (kg DM/cow)        | 3.5  | YTD supp (kg DM/cow)   | 130  |
| Last week N (kg N/ha)             | 9    | Fert N YTD             | 49   |
| Milk yield (L/cow)                | 22.8 | Effluent N YTD         | 0    |
| Fat%                              | 4.8  | Last wk MS             | 2.1  |
| Prot%                             | 3.8  | YTD MS/cow             | 128  |
| SCC                               | 135  | YTD MS/ha              | 402  |
| Average BCS                       | 4.5  | % less than BCS 4      | 6%   |

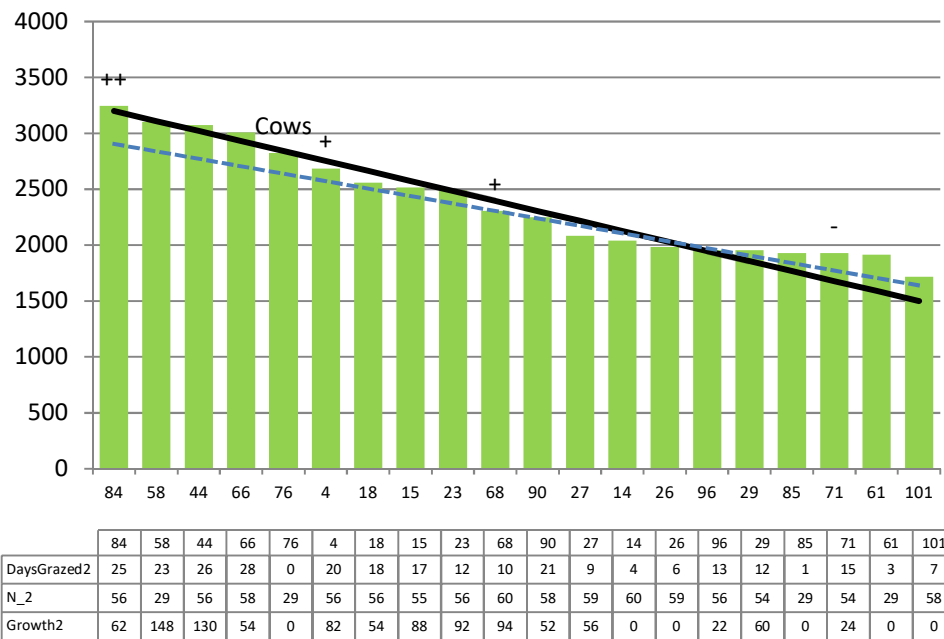
|                                   |      |                        |      |
|-----------------------------------|------|------------------------|------|
| Herd size (cows)                  | 190  | Average Cover          | 2376 |
| Target residual (kg DM/ha)        | 1500 | Average Growth         | 73   |
| Target pasture intake (kg DM/cow) | 17   | Farmlet area           | 57.8 |
| Target Area offered (ha/day)      | 1.9  | Target rotation length | 30   |
| Last week actual rotation (d)     | 30   | Target demand          | 56   |
| Last week supp (kg DM/cow)        | 1.7  | YTD supp (kg DM/cow)   | 60   |
| Last week N (kg N/ha)             | 9    | Fert N YTD             | 46   |
| Milk yield (L/cow)                | 23.7 | Effluent N YTD         | 0    |
| Fat%                              | 4.8  | Last wk MS             | 2.0  |
| Prot%                             | 3.7  | YTD MS/cow             | 131  |
| SCC                               | 113  | YTD MS/ha              | 374  |
| Average BCS                       | 4.6  | % less than BCS 4      | 3%   |

### Standard Kale



Farmlet notes: Eff SR (pasture area) = 3.4; Visual APC 2321; Visual GR 64; Holding rotation at 30 days and filling deficit with 30% barley:PKE blend inshed at milking; complete 2nd round N application with Ammo31 and start 3rd round at 25 kg N/ha as urea; Identify non cyclers for intervention; All cows calved; first batch of calves starting the weaning process.

### Standard Fodder Beet

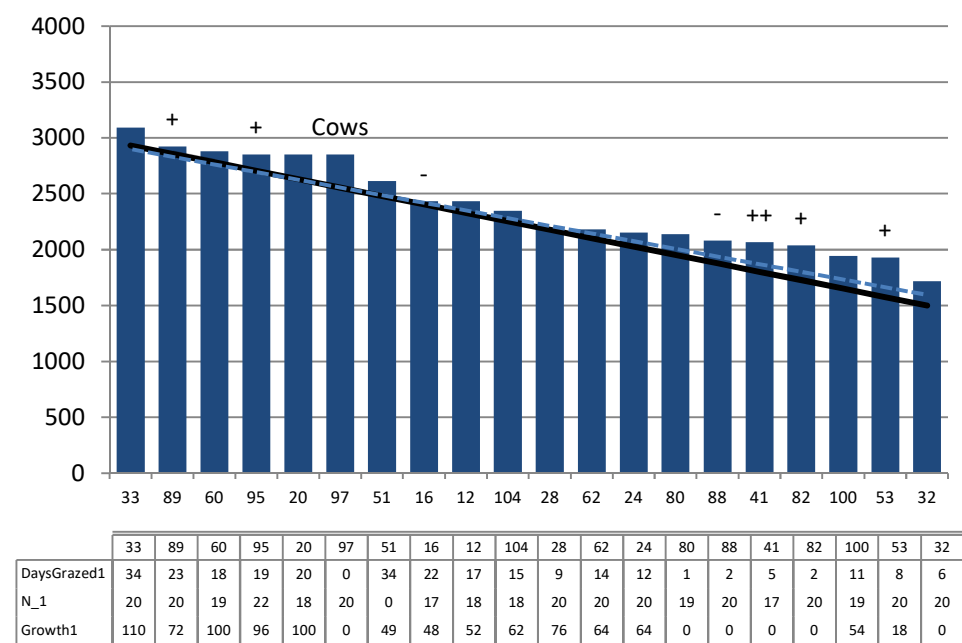


Farmlet notes: Eff SR (pasture area) = 3.37; Visual APC 2201; Visual GR 53; Holding rotation at 30 days and filling deficit with lifted FB and baleage; Increased silage to stretch the FB out longer; complete 2nd round N application with Ammo31 and start 3rd round at 25 kg N/ha as urea; Identify non cyclers for intervention; All cows calved; starting weaning

|                                   |      |                        |      |
|-----------------------------------|------|------------------------|------|
| Herd size (cows)                  | 160  | Average Cover          | 2390 |
| Target residual (kg DM/ha)        | 1500 | Average Growth         | 69   |
| Target pasture intake (kg DM/cow) | 17   | Farmlet area           | 57.7 |
| Target Area offered (ha/day)      | 1.9  | Target rotation length | 30   |
| Last week rotation avg            | 37   | Target demand          | 47   |
| Last week supp (kg DM/cow)        | 1.8  | YTD supp (kg DM/cow)   | 74   |
| Last week N (kg N/ha)             | 1    | Fert N YTD             | 17   |
| Milk yield                        | 23.3 | Effluent N YTD         | 0    |
| Fat%                              | 4.7  | Last wk MS             | 2.0  |
| Prot%                             | 3.8  | YTD MS/cow             | 130  |
| SCC                               | 146  | YTD MS/ha              | 355  |
| Average BCS                       | 4.6  | % less than BCS 4      | 4%   |

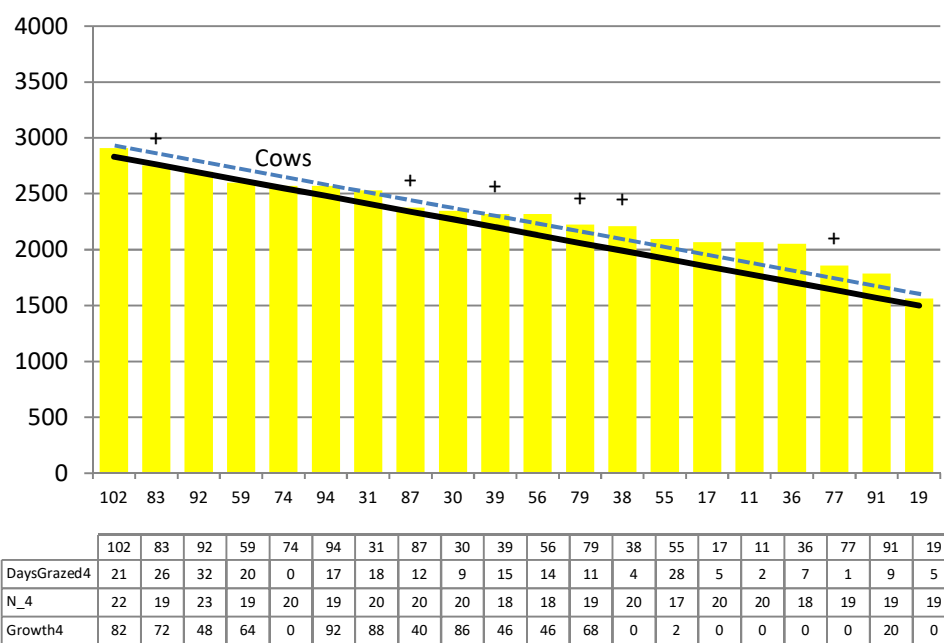
|                                   |      |                        |      |
|-----------------------------------|------|------------------------|------|
| Herd size (cows)                  | 158  | Average Cover          | 2297 |
| Target residual (kg DM/ha)        | 1500 | Average Growth         | 58   |
| Target pasture intake (kg DM/cow) | 16   | Farmlet area           | 58.1 |
| Target Area offered (ha/day)      | 1.9  | Target rotation length | 31   |
| Last week rotation avg            | 33   | Target demand          | 44   |
| Last week supp (kg DM/cow)        | 1.8  | YTD supp (kg DM/cow)   | 69   |
| Last week N (kg N/ha)             | 1    | Fert N YTD             | 18   |
| Milk yield                        | 22.2 | Effluent N YTD         | 0    |
| Fat%                              | 5.0  | Last wk MS             | 1.9  |
| Prot%                             | 3.8  | YTD MS/cow             | 127  |
| SCC                               | 97   | YTD MS/ha              | 335  |
| Average BCS                       | 4.7  | % less than BCS 4      | 2%   |

### Low Impact Kale



Farmlet notes: Eff SR (grass area) = 2.7. Visual APC 2229; Visual GR 54; Holding rotation at 30 days and filling deficit with 30% barley:PKE blend inshed at milking; debating whether to utilise some of the Dec N now to stimulate growth; Identify non cyclers for intervention; All cows calved; first batch of calves starting the weaning process.

### Low Impact Fodder Beet



Farmlet notes: Eff SR (Grass area) = 2.8. Visual APC 2185; Visual GR 49; Holding rotation at 30 days & filling deficit with lifted FB & baleage; Increased silage to stretch the FB out; debating whether to utilise some of the Dec N now to stimulate growth; All cows calved; Identify non cyclers for intervention; start weaning process for calves at target LW