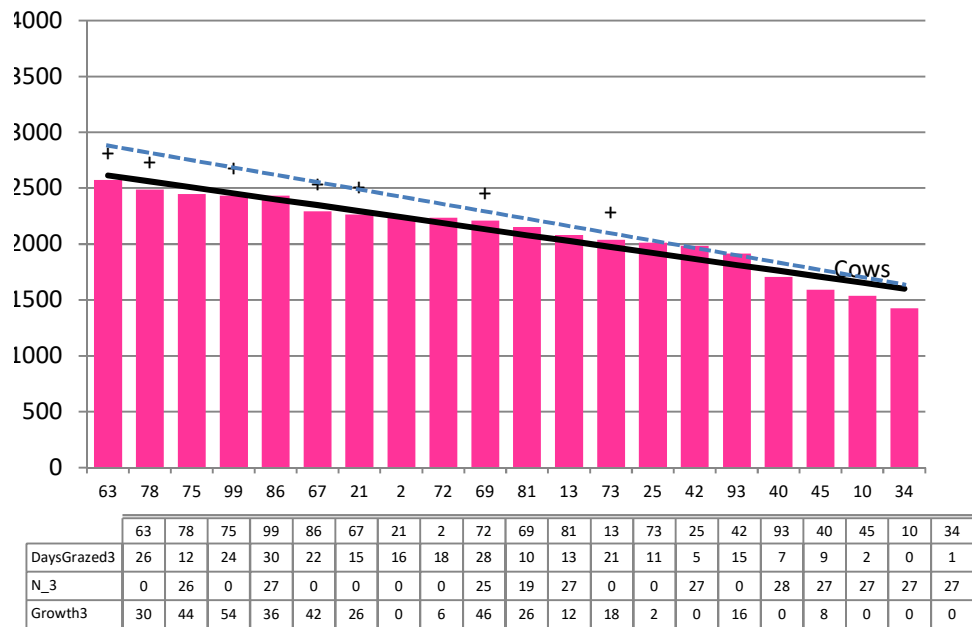


Date 09-10-19

Herd size (cows)	175	Average Cover	2103
Target residual (kg DM/ha)	1600	Average Growth	26
Target pasture intake (kg DM/cow)	11	Farmlet area	57.9
Target Area offered (ha/day)	1.9	Target rotation length	30
Last week actual rotation (d)	39	Target demand	33
Last week supp (kg DM/cow)	1.8	YTD supp (kg DM/cow)	25
Last week N (kg N/ha)	0	Fert N YTD	14
Milk yield (L/cow)	21.9	Effluent N YTD	0
Fat%	N	Last wk MS	W
Prot%	E	YTD MS/cow	E
SCC	X	YTD MS/ha	E
Average BCS	4.5	% less than BCS 4	2%

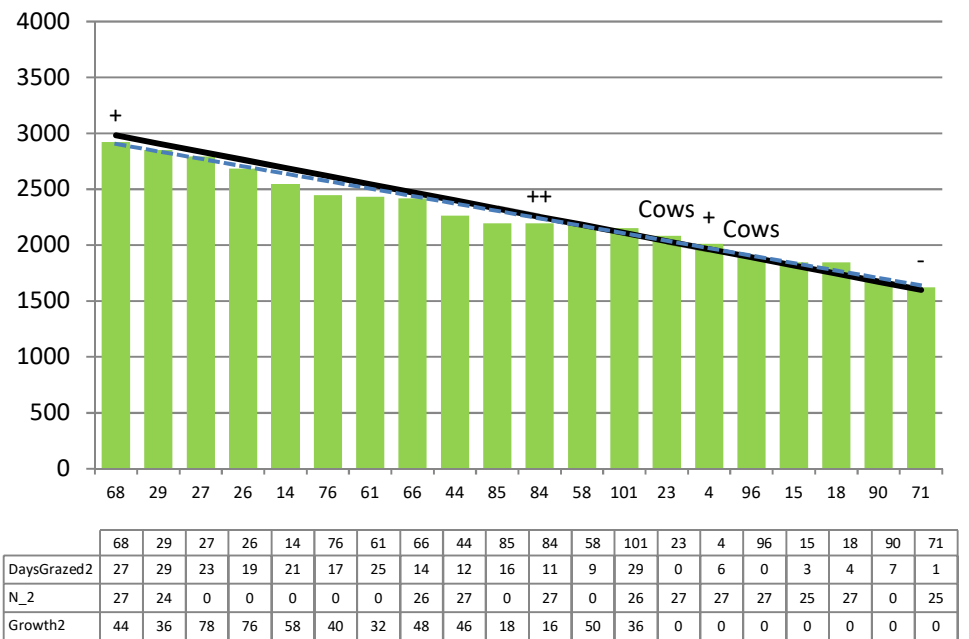
Herd size (cows)	175	Average Cover	2251
Target residual (kg DM/ha)	1600	Average Growth	44
Target pasture intake (kg DM/cow)	15	Farmlet area	57.8
Target Area offered (ha/day)	1.9	Target rotation length	30
Last week actual rotation (d)	26	Target demand	45
Last week supp (kg DM/cow)	1.6	YTD supp (kg DM/cow)	22
Last week N (kg N/ha)	0	Fert N YTD	14
Milk yield (L/cow)	22.9	Effluent N YTD	0
Fat%	5.0	Last wk MS	2.0
Prot%	3.8	YTD MS/cow	103
SCC	135	YTD MS/ha	294
Average BCS	4.6	% less than BCS 4	0%

Standard Kale



Farmlet notes: Eff SR (pasture area) = 3.4; Visual APC 2108; Visual GR 37: Pasture intake 11 kg DM/cow, inshed feeding ↑ to 4 kg DM + 3 kg DM baleage; Applying ammo to all pdks not in grazing plan for the next 8 days; hold rotation; developing plan for non cycling cows & monitoring pre-mating heats; Pre graze target on 21 day round = 2920 kg DM/ha

Standard Fodder Beet

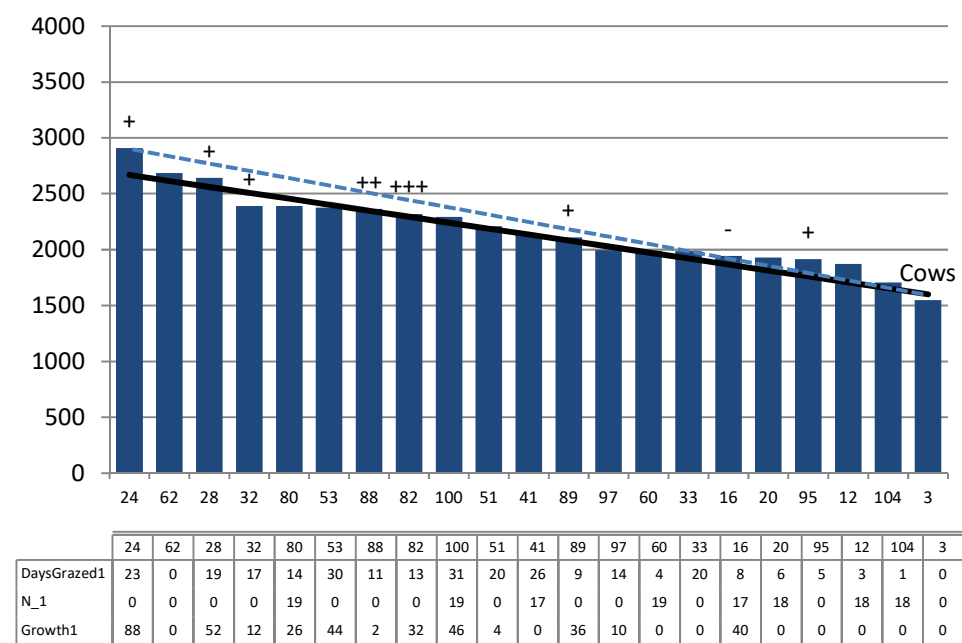


Farmlet notes: Eff SR (pasture area) = 3.37; Visual APC 2263; Visual GR 52: Pasture intake 15 kg DM/cow, lifted fodder beet 2 kg DM & baleage 2 kg DM./day; DCP supplementation to milkers with MgO & limeflour; 2nd round of ammo (30 kg N/ha) to all pdks not on grazing plan this week; Pre-graze target on 21d round post balance date= 2910 kg DM/ha

Herd size (cows)	145	Average Cover	2174
Target residual (kg DM/ha)	1600	Average Growth	33
Target pasture intake (kg DM/cow)	14	Farmlet area	60.6
Target Area offered (ha/day)	1.9	Target rotation length	32
Last week rotation avg	42	Target demand	33
Last week supp (kg DM/cow)	0.7	YTD supp (kg DM/cow)	10
Last week N (kg N/ha)	0	Fert N YTD	7
Milk yield	23.5	Effluent N YTD	0
Fat%	4.6	Last wk MS	2.0
Prot%	3.8	YTD MS/cow	103
SCC	117	YTD MS/ha	280
Average BCS	4.6	% less than BCS 4	0%

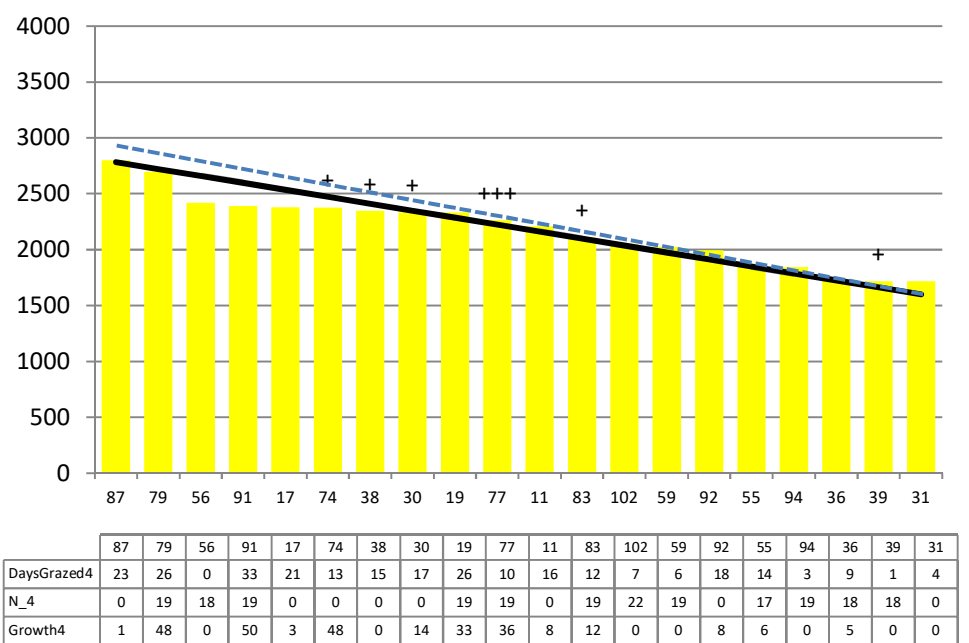
Herd size (cows)	145	Average Cover	2180
Target residual (kg DM/ha)	1600	Average Growth	21
Target pasture intake (kg DM/cow)	15.5	Farmlet area	58.1
Target Area offered (ha/day)	1.9	Target rotation length	31
Last week rotation avg	35	Target demand	39
Last week supp (kg DM/cow)	1.2	YTD supp (kg DM/cow)	29
Last week N (kg N/ha)	0	Fert N YTD	11
Milk yield	22.1	Effluent N YTD	0
Fat%	4.9	Last wk MS	1.9
Prot%	3.8	YTD MS/cow	100
SCC	134	YTD MS/ha	264
Average BCS	4.7	% less than BCS 4	1%

Low Impact Kale



Farmlet notes: Eff SR (grass area) = 2.7. Visual APC 2170; Visual GR 40: Pasture intake 14 kg DM/cow, inshed feeding 3 kg DM plus 1.5 kg DM baleage to hold rotation at 32 days; supplement adjusted based on residuals, balage first to be removed; monitoring pre mating heats; Pre-graze target on 25 d rotation post balance date = 2860 kg DM/ha

Low Impact Fodder Beet



Farmlet notes: Eff SR (Grass area) = 2.86. Visual APC 2202; Visual GR 35; pasture intake 15.5 kg DM/cow, 2 kg DM lifted fodder beet & 1.5 kg DM baleage; monitoring residuals & will adjust supplement as required; DCP to milkers dusted with MgO & limeflour; monitoring pre-mating heats; Pre-graze target 25 d rotation post balance date = 2920 kg DM/ha