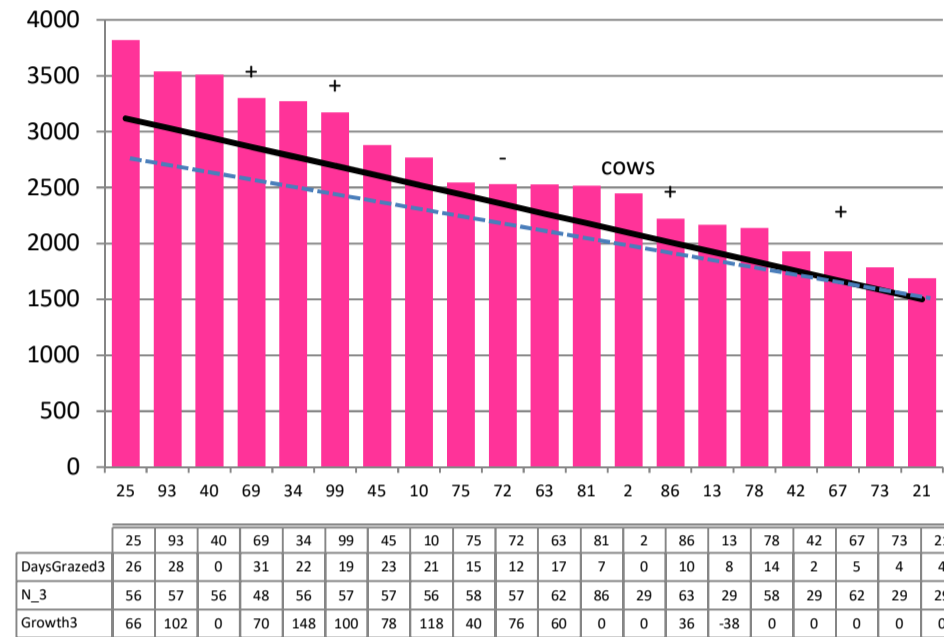


Date 30-10-19

Herd size (cows)	196	Average Cover	2634
Target residual (kg DM/ha)	1500	Average Growth	71
Target pasture intake (kg DM/cow)	19	Farmlet area	57.9
Target Area offered (ha/day)	2.3	Target rotation length	25
Last week actual rotation (d)	30	Target demand	64
Last week supp (kg DM/cow)	2.2	YTD supp (kg DM/cow)	148
Last week N (kg N/ha)	0	Fert N YTD	49
Milk yield (L/cow)	23.0	Effluent N YTD	0
Fat%	N	Last wk MS	W
Prot%	E	YTD MS/cow	E
SCC	X	YTD MS/ha	E
Average BCS	T	% less than BCS 4	K

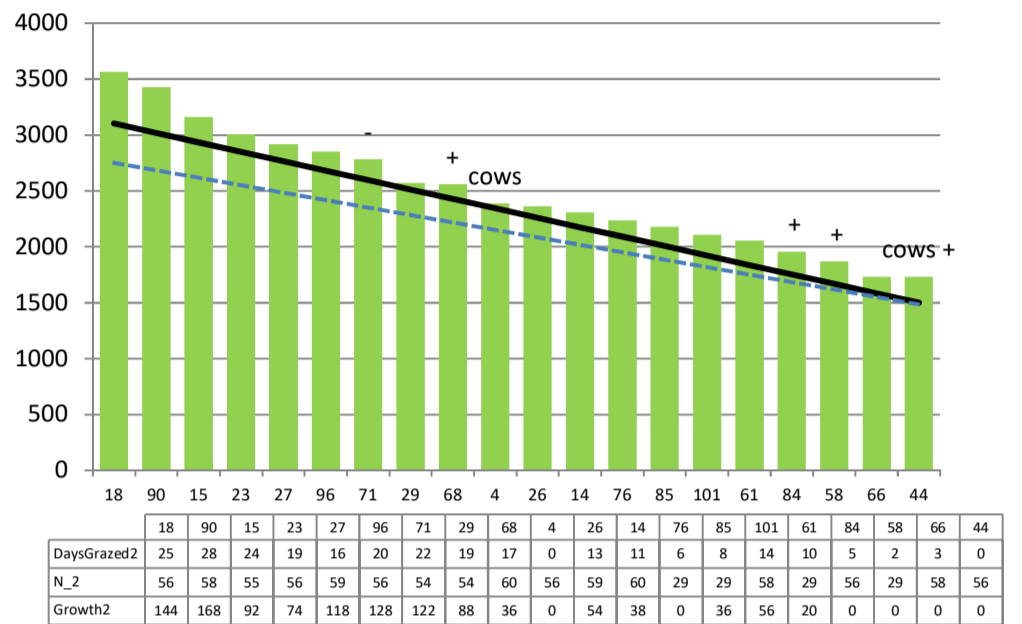
Herd size (cows)	194	Average Cover	2490
Target residual (kg DM/ha)	1500	Average Growth	84
Target pasture intake (kg DM/cow)	19	Farmlet area	57.8
Target Area offered (ha/day)	2.3	Target rotation length	25
Last week actual rotation (d)	32	Target demand	64
Last week supp (kg DM/cow)	2.6	YTD supp (kg DM/cow)	79
Last week N (kg N/ha)	0	Fert N YTD	46
Milk yield (L/cow)	22.3	Effluent N YTD	0
Fat%	N	Last wk MS	W
Prot%	E	YTD MS/cow	E
SCC	X	YTD MS/ha	E
Average BCS	T	% less than BCS 4	K

Standard Kale



Farmlet notes: Eff SR (pasture area) = 3.4; **Visual APC 2365; Visual GR 63**; Balance date has now been reached :-); moving to a 20 d rotation over the next week; decreasing inshed feeding with aim to remove by mid next week; stem elongation seen; start round 3 of N fertiliser at 25 kg N/ha as urea; 5% non cyclers treated; 15% on OAD due to low BCS & non cycling.

Standard Fodder Beet

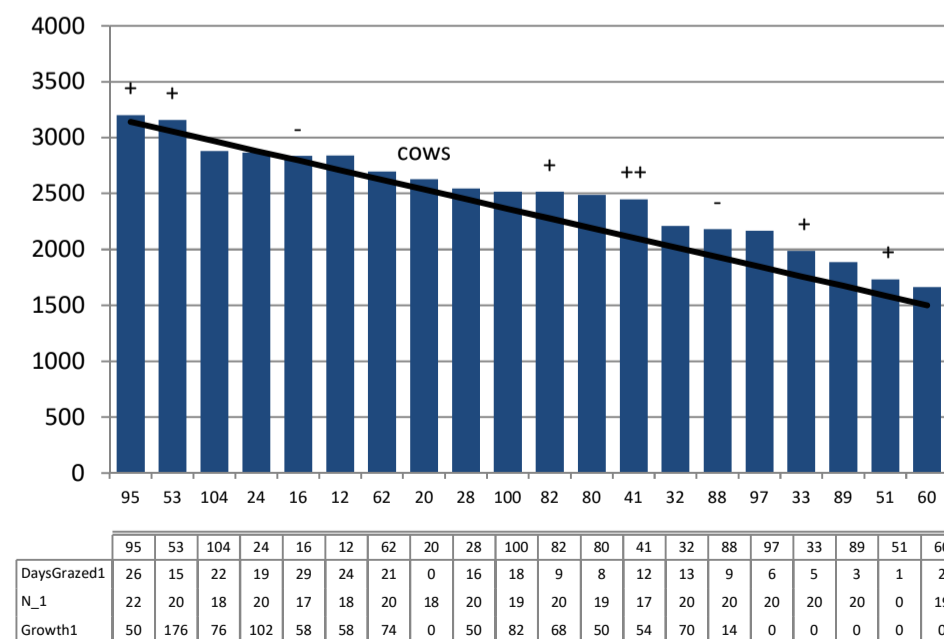


Farmlet notes: Eff SR (pasture area) = 3.35; **Visual APC 2285; Visual GR 66**; Balance date has been achieved :-); moving to a 20 day rotation over the next week; significant stem elongation observed; lifted FB has been finished; start round 3 of N fertiliser at 25 kg N/ha as urea; 6% non cyclers treated with a cidr; 10% on OAD in herd due to low BCS and non cycling;

Herd size (cows)	164	Average Cover	2465
Target residual (kg DM/ha)	1500	Average Growth	70
Target pasture intake (kg DM/cow)	19	Farmlet area	57.7
Target Area offered (ha/day)	1.9	Target rotation length	30
Last week rotation avg	41	Target demand	54
Last week supp (kg DM/cow)	2.5	YTD supp (kg DM/cow)	93
Last week N (kg N/ha)	0	Fert N YTD	17
Milk yield	24.1	Effluent N YTD	0
Fat%	N	Last wk MS	W
Prot%	E	YTD MS/cow	E
SCC	X	YTD MS/ha	E
Average BCS	T	% less than BCS 4	K

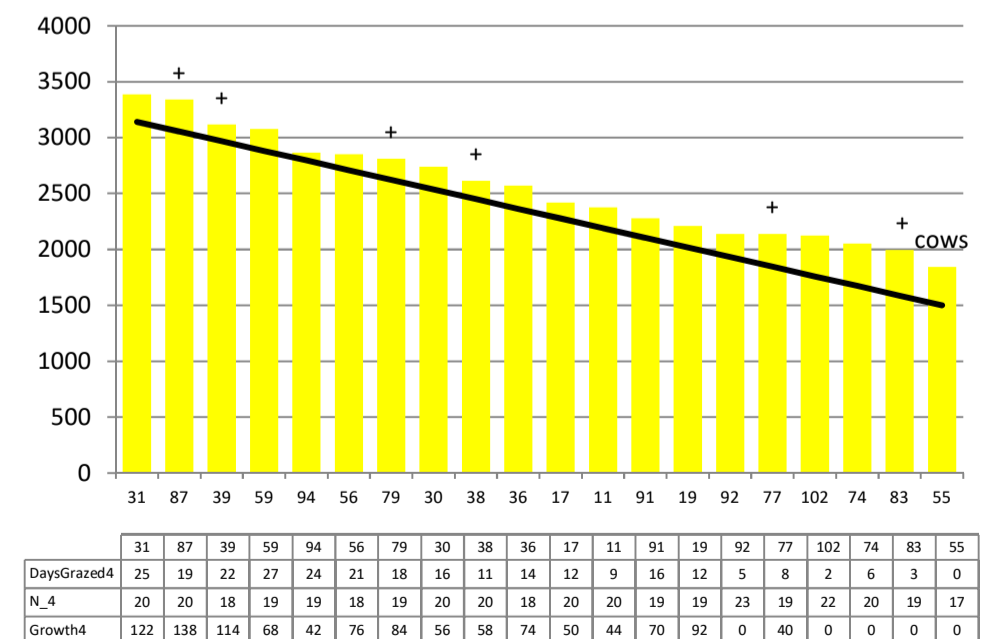
Herd size (cows)	164	Average Cover	2546
Target residual (kg DM/ha)	1500	Average Growth	75
Target pasture intake (kg DM/cow)	19	Farmlet area	58.1
Target Area offered (ha/day)	1.9	Target rotation length	31
Last week rotation avg	41	Target demand	54
Last week supp (kg DM/cow)	3.6	YTD supp (kg DM/cow)	94
Last week N (kg N/ha)	0	Fert N YTD	18
Milk yield	21.0	Effluent N YTD	0
Fat%	N	Last wk MS	W
Prot%	E	YTD MS/cow	E
SCC	X	YTD MS/ha	E
Average BCS	T	% less than BCS 4	K

Low Impact Kale



Farmlet notes: Eff SR (grass area) = 2.8. **Visual APC 2231; Visual GR 60**; Just at balance date but will maintain 30 day rotation for another week & top up with 2 kg PKE blend inshed; Significant stem elongation visible during farm walk; Ryegrass plants are under stress; 5% non cyclers received a CIDR; 13% on OAD due to low BCS and non cycling; No N applications.

Low Impact Fodder Beet



Farmlet notes: Eff SR (Grass area) = 2.8. **Visual APC 2304; Visual GR 51**; Not at balance date yet; significant stem elongation visible during farm walk indicating the ryegrass is under stress; maintaining a 30 day rotation and fill any feed deficits with pasture baleage; all lifted fodder beet is finished; 5.5% of non cyclers got a CIDR; 7% low BCS non cyclers on OAD