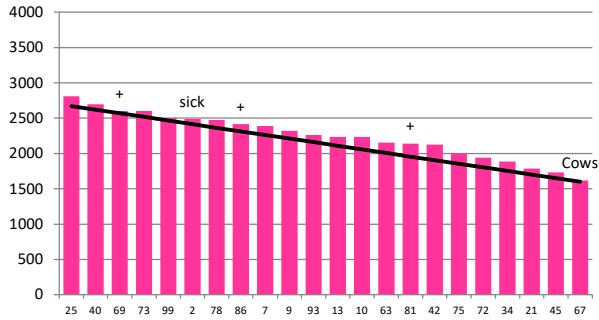


Date 07-01-20

Herd size (cows)	194	Average Cover	2240
Target residual (kg DM/ha)	1600	Average Growth	48
Target pasture intake (kg DM/cow)	16	Farmlet area	62.5
Target Area offered (ha/day)	2.9	Target rotation length	22
Last week actual rotation (d)	22	Target demand	50
Last week supp (kg DM/cow)	0.3	YTD supp (kg DM/cow)	206
Last week N (kg N/ha)	0	Fert N YTD	104
Milk yield (L/cow)	18.5	Effluent N YTD	0
Fat%	N	Last wk MS	W
Prot%	E	YTD MS/cow	E
SCC	X	YTD MS/ha	E
Average BCS	4.1	% less than BCS 4	5%

Standard Kale

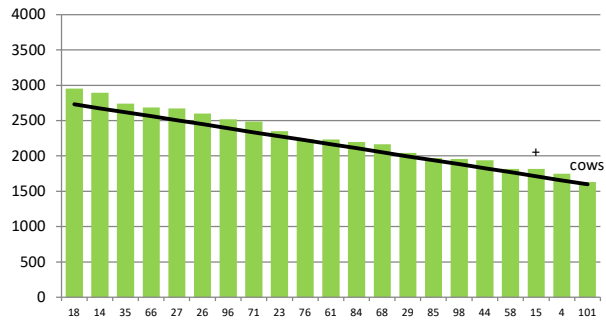


	25	40	69	73	99	2	78	86	7	9	93	13	10	63	81	42	75	72	34	21	45	67	
DaysGrazed3	16	0	17	9	13	0	14	20	8	7	11	12	18	2	8	10	6	5	3	4	1	0	0
N_3	106	111	94	164	82	54	114	114	28	24	107	128	81	112	109	164	109	107	107	135	108	113	0
Growth3	60	61	68	0	73	47	66	47	15	0	52	22	20	0	0	0	0	0	0	0	0	0	0

Farmlet notes: Eff SR (pasture area) = 3.1; Visual APC 2099; Visual GR 54; Extend rotation to 30 days utilising any increased growth rates plus supplementary feed; 1 kg DM/cow/day inshed feeding; Select 2021 crop pdks; Monitor crops for pests & disease; Graze new grass pdks again & apply 25 kg N/ha; continue with N on remaining pdks; Bulls out this week.

Herd size (cows)	193	Average Cover	2268
Target residual (kg DM/ha)	1600	Average Growth	56
Target pasture intake (kg DM/cow)	17	Farmlet area	60.7
Target Area offered (ha/day)	2.9	Target rotation length	21
Last week actual rotation (d)	21	Target demand	54
Last week supp (kg DM/cow)	0.0	YTD supp (kg DM/cow)	92
Last week N (kg N/ha)	0	Fert N YTD	99
Milk yield (L/cow)	17.6	Effluent N YTD	0
Fat%	N	Last wk MS	W
Prot%	E	YTD MS/cow	E
SCC	X	YTD MS/ha	E
Average BCS	4.1	% less than BCS 4	17%

Standard Fodder Beet

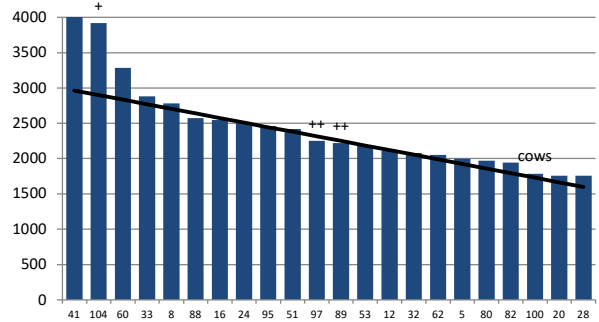


	18	14	35	66	27	26	96	71	23	76	61	84	68	29	85	98	44	58	15	4	101	
DaysGrazed2	0	19	8	18	14	15	16	10	6	8	11	13	4	5	9	7	12	1	2	3	0	0
N_2	107	85	30	84	84	84	81	100	107	144	161	106	112	105	160	27	82	164	103	108	117	0
Growth2	67	52	45	80	51	56	61	76	0	0	0	0	0	0	0	0	27	0	0	0	0	0

Farmlet notes: Eff SR (pasture area) = 3.5; Visual APC 2056; Visual GR 48; Extend rotation to 30 days utilising current small surplus in feed wedge, any growth increases & baleage if required; Select 2021 crop pdks; Monitor 2020 crop pdks for pests & disease; 2nd grazing of new grass pdks followed by 25 kg N/ha; N on remaining pdks; Bulls out this week.

Herd size (cows)	162	Average Cover	2435
Target residual (kg DM/ha)	1600	Average Growth	45
Target pasture intake (kg DM/cow)	16	Farmlet area	63.5
Target Area offered (ha/day)	1.9	Target rotation length	33
Last week rotation avg	32	Target demand	41
Last week supp (kg DM/cow)	0.3	YTD supp (kg DM/cow)	156
Last week N (kg N/ha)	0	Fert N YTD	32
Milk yield	18.6	Effluent N YTD	0
Fat%	N	Last wk MS	W
Prot%	E	YTD MS/cow	E
SCC	X	YTD MS/ha	E
Average BCS	4.1	% less than BCS 4	12%

Low Impact Kale

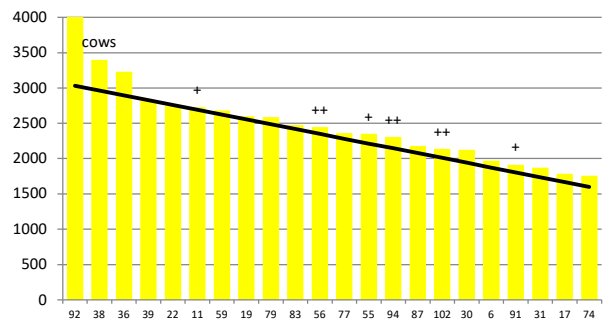


	41	104	60	33	8	88	16	24	95	51	97	89	53	12	32	62	5	80	82	100	20	28
DaysGrazed1	44	12	28	0	8	21	15	11	20	24	10	18	14	17	7	13	6	5	0	3	2	0
N_1	17	35	36	26	36	33	20	39	36	36	37	20	18	36	36	25	35	36	35	34	36	0
Growth1	94	31	84	34	52	46	41	82	46	27	0	34	15	19	0	28	0	0	0	0	0	0

Farmlet notes: Eff SR (grass area) = 2.8. Visual APC 2312; Visual GR 41; Conserve pdk 104, return 41 to the grazing rotation; hold 32 day rotation; offer 1 kg DM/cow/day inshed feeding; regraze new grass pdks & apply 25 kg N/ha; no N on remaining pdks; Select 2021 crop pdks & monitor 2020 crop pdks for pests & diseases; Bulls out this week & cull;

Herd size (cows)	160	Average Cover	2498
Target residual (kg DM/ha)	1600	Average Growth	39
Target pasture intake (kg DM/cow)	17	Farmlet area	63.9
Target Area offered (ha/day)	1.9	Target rotation length	34
Last week rotation avg	35	Target demand	43
Last week supp (kg DM/cow)	0.0	YTD supp (kg DM/cow)	139
Last week N (kg N/ha)	0	Fert N YTD	37
Milk yield	16.9	Effluent N YTD	0
Fat%	N	Last wk MS	W
Prot%	E	YTD MS/cow	E
SCC	X	YTD MS/ha	E
Average BCS	4.1	% less than BCS 4	14%

Low Impact Fodder Beet



	92	38	36	39	22	11	59	19	79	83	56	77	55	94	87	102	30	6	91	31	17	74
DaysGrazed4	44	0	10	19	8	21	23	17	15	25	14	22	17	12	11	5	9	7	7	2	4	1
N_4	23	36	35	34	24	20	35	19	19	35	34	35	17	35	36	38	36	25	35	36	36	36
Growth4	70	81	39	38	67	36	28	48	5	9	50	42	18	10	0	0	0	0	0	0	0	0

Farmlet notes: Eff SR (Grass area) = 2.8. Visual APC 2345; Visual GR 48; Conserve pdk 92; hold 32 day rotation & top pdks post grazing if required to achieve residual; regraze new grass pdks & apply 25 kg N/ha; no N on remaining pdks; select 2021 crop pdks & monitor 2020 crop pdks for pests & diseases; take bulls out of herd this week & cull; 2x culls this wk