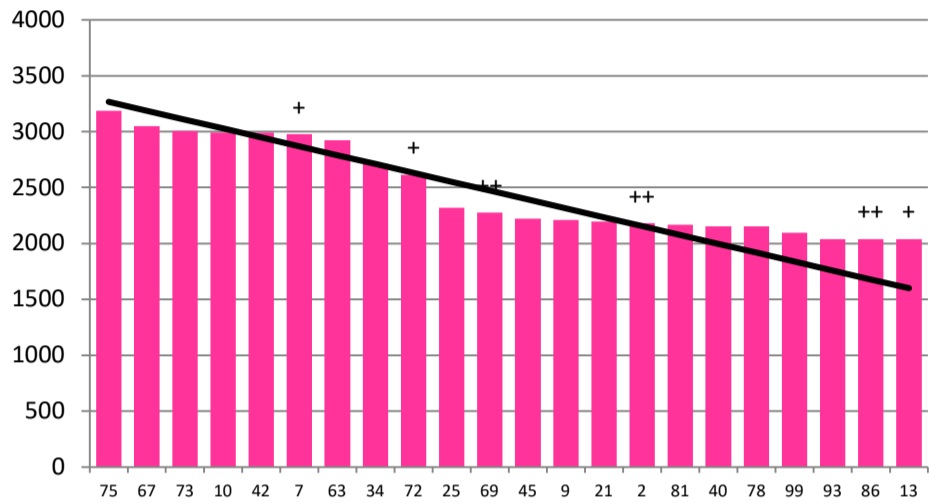


Date 19-02-20

Herd size (cows)	192	Average Cover	2469
Target residual (kg DM/ha)	1600	Average Growth	57
Target pasture intake (kg DM/cow)	16.5	Farmlet area	62.5
Target Area offered (ha/day)	1.9	Target rotation length	33
Last week actual rotation (d)	33	Target demand	51
Last week supp (kg DM/cow)	0.6	YTD supp (kg DM/cow)	262
Last week N (kg N/ha)	0	Fert N YTD	122
Milk yield (L/cow)	16.1	Effluent N YTD	0
Fat%	5.0	Last wk MS	1.7
Prot%	4.2	YTD MS/cow	338
SCC	118	YTD MS/ha	1057
Average BCS	4.2	% less than BCS 4	7%

Standard Kale

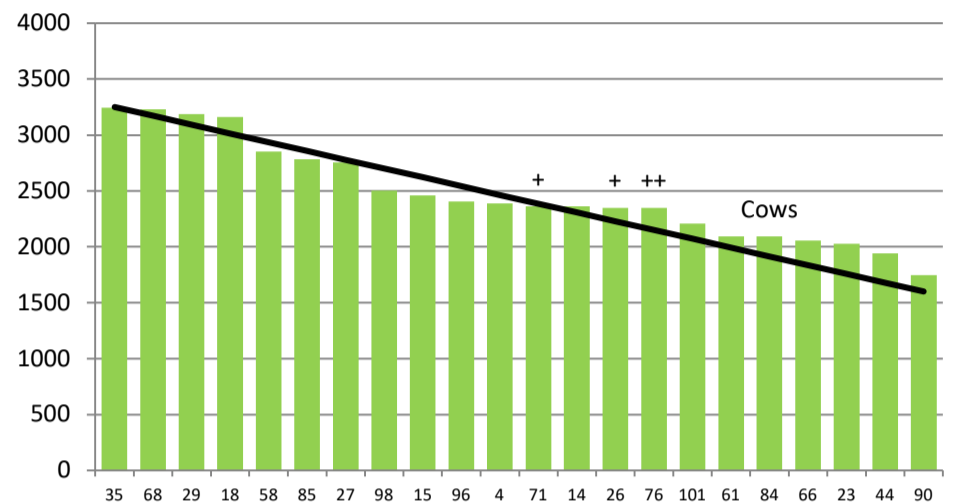


	75	67	73	10	42	7	63	34	72	25	69	45	9	21	2	81	40	78	99	93	86	13
DaysGrazed3	22	14	4	0	25	10	24	21	19	16	4	14	8	17	5	0	12	0	6	1	0	2
N_3	135	135	117	129	130	73	130	128	129	131	115	116	58	131	95	134	103	124	135	133	137	126
Growth3	70	84	58	38	98	110	68	70	34	25	0	4	68	42	0	0	28	0	0	0	0	0

Farmlet notes: Visual APC 2346; Visual GR 73; Skip pdk 67 for baleage; maintain current rotation length; continue with N applications post grazing; assess kale crops for pests & weeds & spray if required; Replace damaged bales in crop pdks & finish pdk setup; reassess light BCS cows & adjust milking frequency & inshed feeding as required.

Herd size (cows)	190	Average Cover	2481
Target residual (kg DM/ha)	1600	Average Growth	69
Target pasture intake (kg DM/cow)	16.5	Farmlet area	63.6
Target Area offered (ha/day)	1.9	Target rotation length	33
Last week actual rotation (d)	35	Target demand	49
Last week supp (kg DM/cow)	0.7	YTD supp (kg DM/cow)	152
Last week N (kg N/ha)	0	Fert N YTD	118
Milk yield (L/cow)	16.3	Effluent N YTD	0
Fat%	5.0	Last wk MS	1.8
Prot%	4.2	YTD MS/cow	337
SCC	134	YTD MS/ha	965
Average BCS	4.1	% less than BCS 4	17%

Standard Fodder Beet

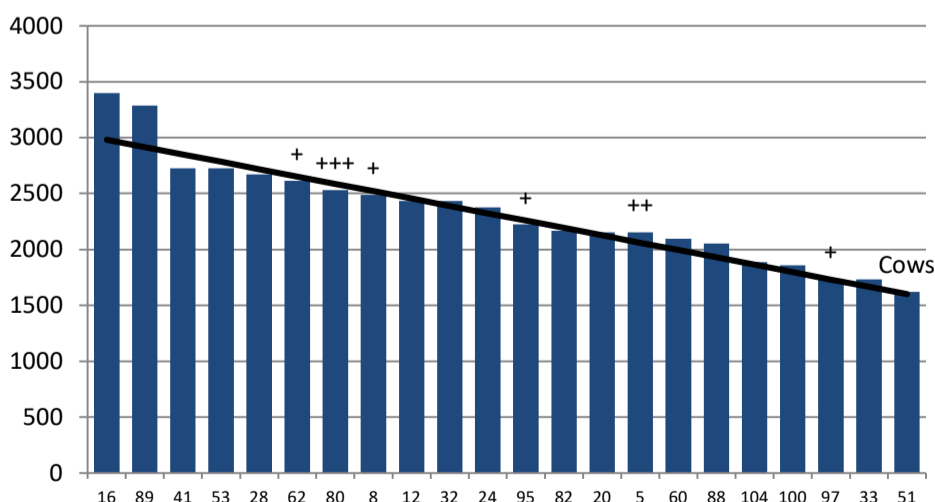


	35	68	29	18	58	85	27	98	15	96	4	71	14	26	76	101	61	84	66	23	44	90
DaysGrazed2	13	28	24	22	25	27	18	7	16	12	21	5	15	10	8	20	0	0	0	4	1	3
N_2	72	135	114	123	132	133	128	82	98	128	126	124	113	127	140	140	133	129	130	130	129	81
Growth2	162	96	88	112	70	44	40	0	42	70	66	0	38	56	40	38	0	0	0	0	0	0

Farmlet notes: Visual APC 2325; Visual GR 67; Skip pdk 18 for baleage; maintain current rotation length; continue with N applications post grazing; assess fodder beet crops for pests & weeds & spray if required; aerate x1 compacted paddock; reassess light BCS cows & adjust milking frequency & feeding levels as required; replace damaged bales

Herd size (cows)	159	Average Cover	2329
Target residual (kg DM/ha)	1600	Average Growth	53
Target pasture intake (kg DM/cow)	16.5	Farmlet area	63.5
Target Area offered (ha/day)	1.9	Target rotation length	33
Last week rotation avg	44	Target demand	41
Last week supp (kg DM/cow)	0.7	YTD supp (kg DM/cow)	194
Last week N (kg N/ha)	0	Fert N YTD	35
Milk yield	17.1	Effluent N YTD	0
Fat%	4.9	Last wk MS	1.8
Prot%	4.1	YTD MS/cow	338
SCC	100	YTD MS/ha	921
Average BCS	4.3	% less than BCS 4	4%

Low Impact Kale

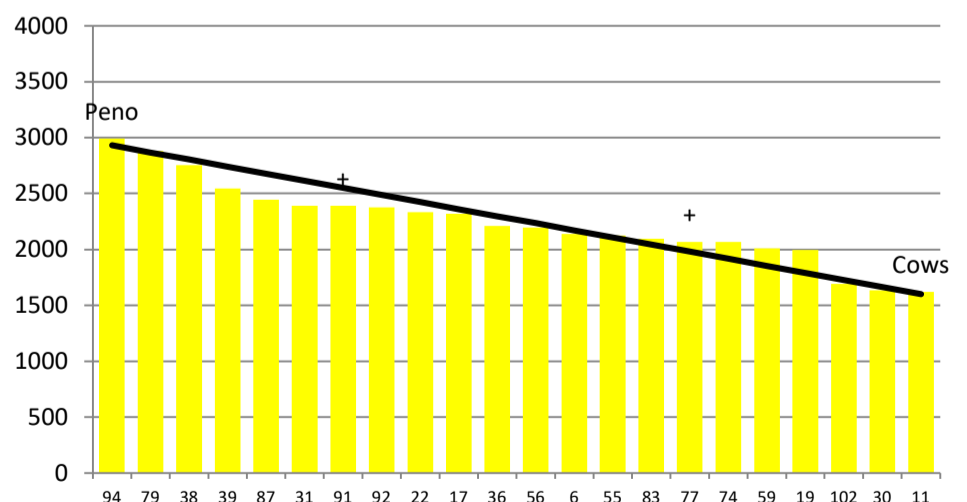


	16	89	41	53	28	62	80	8	12	32	24	95	82	20	5	60	88	104	100	97	33	51
DaysGrazed1	32	31	13	26	16	22	14	11	19	18	7	8	0	17	1	0	0	4	9	3	0	0
N_1	31	35	33	33	20	36	33	43	33	29	36	36	50	33	40	35	35	33	35	36	37	27
Growth1	86	96	50	12	88	8	8	76	40	74	118	24	0	40	0	0	0	0	28	0	0	0

Farmlet notes: Visual APC 2172; Visual GR 44; Skip pdk 16 for conservation; maintain current rotation length; assess kale crops for pests & weeds & spray if required; Replace damaged bales in crop pdks & finish pdk setup; reassess light BCS cows & adjust milking frequency & inshed feeding as required. Graze new grass on a shorter rotation to maintain quality

Herd size (cows)	158	Average Cover	2239
Target residual (kg DM/ha)	1600	Average Growth	43
Target pasture intake (kg DM/cow)	16	Farmlet area	63.9
Target Area offered (ha/day)	1.9	Target rotation length	34
Last week rotation avg	33	Target demand	40
Last week supp (kg DM/cow)	0.6	YTD supp (kg DM/cow)	158
Last week N (kg N/ha)	0	Fert N YTD	42
Milk yield	17.0	Effluent N YTD	0
Fat%	5.2	Last wk MS	1.7
Prot%	4.3	YTD MS/cow	319
SCC	165	YTD MS/ha	843
Average BCS	4.3	% less than BCS 4	8%

Low Impact Fodder Beet



	94	79	38	39	87	31	91	92	22	17	36	56	6	55	83	77	74	59	19	102	30	11
DaysGrazed4	0	23	14	11	22	18	19	6	9	17	12	2	4	0	0	1	16	0	7	0	0	0
N_4	62	26	35	34	37	37	34	38	40	20	36	33	45	33	35	32	35	35	35	36	36	36
Growth4	64	6	86	34	18	36	20	0	78	62	26	0	0	0	0	0	26	0	64	0	0	0

Farmlet notes: Visual APC 2022; Visual GR 44; Skip pdk 91 for conservation; maintain current rotation length; assess fodder beet crops for pests & weeds & spray if required; Aerate x1 compacted paddocks; reassess light BCS cows & adjust milking frequency & inshed feeding as required. Graze new grass on a shorter rotation to maintain quality