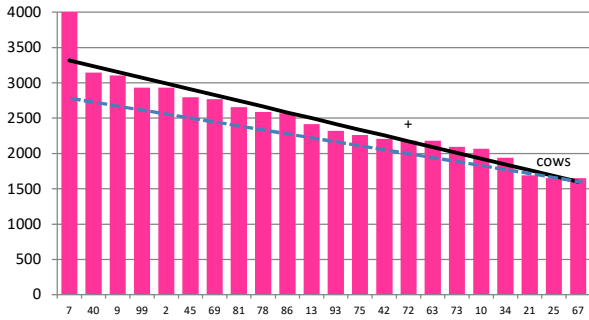


Date 04-02-20

Herd size (cows)	192	Average Cover	2479
Target residual (kg DM/ha)	1600	Average Growth	60
Target pasture intake (kg DM/cow)	17	Farmlet area	62.5
Target Area offered (ha/day)	1.9	Target rotation length	33
Last week actual rotation (d)	46	Target demand	52
Last week supp (kg DM/cow)	0.8	YTD supp (kg DM/cow)	243
Last week N (kg N/ha)	0	Fert N YTD	140
Milk yield (L/cow)	18.7	Effluent N YTD	0
Fat%	4.9	Last wk MS	1.9
Prot%	4.2	YTD MS/cow	317
SCC	98	YTD MS/ha	991
Average BCS	4.2	% less than BCS 4	7%

Standard Kale

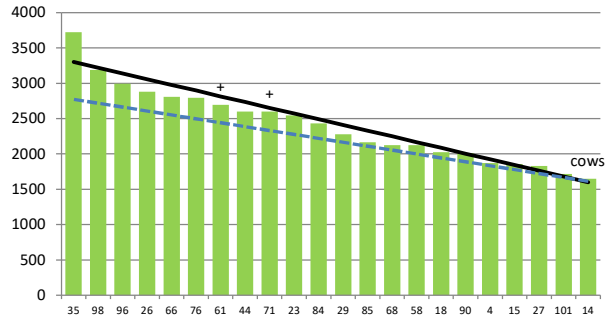


	7	40	9	99	2	45	69	81	78	86	13	93	75	42	72	63	73	10	34	21	25	67
DaysGrazed3	19	27	18	24	0	29	25	17	23	21	13	12	7	10	4	9	5	15	6	2	1	0
N_3	77	138	51	139	111	134	121	137	140	142	180	137	140	192	135	143	200	135	136	190	132	145
Growth3	152	86	72	72	0	44	54	33	96	49	51	65	54	42	0	23	0	3	0	0	0	0

Farmlet notes: Visual APC 2295, Visual GR 41; Continue targeting 33-35 day rotation length; supplements only if required due to grazing rotation changes as a result of flooding; calves on platform to graze pdk 2 until head back to support block; continue with N fertiliser at 25 kg N/ha; check infrastructure for damage post flooding; assess crops & replace baleage

Herd size (cows)	190	Average Cover	2403
Target residual (kg DM/ha)	1600	Average Growth	58
Target pasture intake (kg DM/cow)	17	Farmlet area	63.6
Target Area offered (ha/day)	1.9	Target rotation length	33
Last week actual rotation (d)	48	Target demand	51
Last week supp (kg DM/cow)	0.9	YTD supp (kg DM/cow)	127
Last week N (kg N/ha)	0	Fert N YTD	136
Milk yield (L/cow)	18.7	Effluent N YTD	0
Fat%	5.2	Last wk MS	1.7
Prot%	4.2	YTD MS/cow	312
SCC	228	YTD MS/ha	893
Average BCS	4.1	% less than BCS 4	19%

Standard Fodder Beet

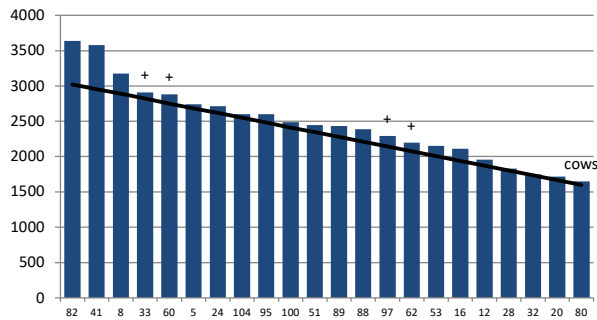


	35	98	96	26	66	76	61	44	71	23	84	29	85	68	58	18	90	4	15	27	101	14
DaysGrazed2	24	17	3	22	25	19	15	16	20	18	14	9	12	13	10	7	68	6	1	3	5	0
N_2	86	88	137	136	138	175	193	136	128	135	133	135	190	139	196	137	85	137	130	137	146	139
Growth2	140	63	0	68	65	79	40	98	30	16	68	47	40	0	37	12	65	0	0	0	0	0

Farmlet notes: Visual APC 2234, Visual GR 43; Continue targeting 33-35 day rotation length; supplement baleage in 2nd break as required based on residuals after first 12 hours; continue with N fertiliser at 25 kg N/ha; check infrastructure for damage post flooding; assess crops & replace baleage; Seek agronomy advice re flooded FB crops;

Herd size (cows)	159	Average Cover	2468
Target residual (kg DM/ha)	1600	Average Growth	56
Target pasture intake (kg DM/cow)	17	Farmlet area	63.5
Target Area offered (ha/day)	1.9	Target rotation length	33
Last week rotation avg	48	Target demand	43
Last week supp (kg DM/cow)	0.4	YTD supp (kg DM/cow)	186
Last week N (kg N/ha)	0	Fert N YTD	40
Milk yield	20.2	Effluent N YTD	0
Fat%	5.0	Last wk MS	1.7
Prot%	4.2	YTD MS/cow	312
SCC	172	YTD MS/ha	850
Average BCS	4.1	% less than BCS 4	12%

Low Impact Kale

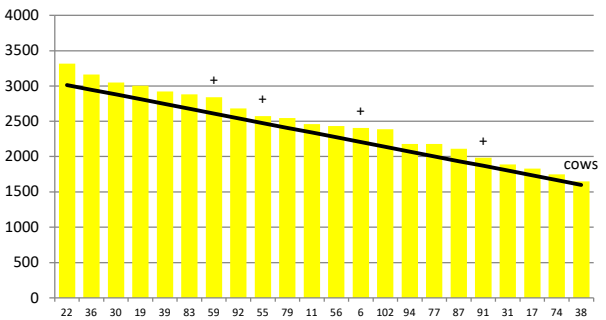


	82	41	8	33	60	5	24	104	95	100	51	89	88	97	62	53	16	12	28	32	20	80
DaysGrazed1	33	24	18	27	25	9	13	24	21	28	20	16	23	14	7	11	17	4	1	3	2	0
N_1	37	33	44	38	36	41	38	51	39	52	38	55	38	36	36	37	33	35	20	53	34	51
Growth1	152	147	105	65	61	37	56	8	26	30	37	47	37	47	40	51	10	0	0	0	0	0

Farmlet notes: Visual APC 2263, Visual GR 36; Pdk 33 & 60 still targeted for conservation but 33 may be grazed if flats are not ready to graze post flooding by early next week; Supplements only to light conditioned early calving cows; check infrastructure for damage post flooding; assess crops & replace baleage; seek agronomic advice re flooded kale crops;

Herd size (cows)	158	Average Cover	2465
Target residual (kg DM/ha)	1600	Average Growth	48
Target pasture intake (kg DM/cow)	17	Farmlet area	63.9
Target Area offered (ha/day)	1.9	Target rotation length	34
Last week rotation avg	45	Target demand	42
Last week supp (kg DM/cow)	0.6	YTD supp (kg DM/cow)	147
Last week N (kg N/ha)	0	Fert N YTD	47
Milk yield	16.9	Effluent N YTD	0
Fat%	5.1	Last wk MS	1.6
Prot%	4.1	YTD MS/cow	295
SCC	197	YTD MS/ha	779
Average BCS	4.1	% less than BCS 4	12%

Low Impact Fodder Beet



	22	36	30	19	39	83	59	92	55	79	11	56	6	102	94	77	87	91	31	17	74	38
DaysGrazed4	18	26	37	1	23	25	22	24	16	8	12	16	14	10	9	15	7	4	3	2	1	0
N_4	41	37	36	36	35	36	37	41	36	38	37	34	47	38	53	38	54	53	37	36	53	37
Growth4	70	84	47	0	37	75	72	9	56	47	51	42	33	9	51	33	56	0	0	0	0	0

Farmlet notes: Visual APC 2247, Visual GR 49; Pdk 102 & 30 still targeted for conservation but will depend on availability of pdk on the lower terrace for grazing; Supplements only to light conditioned, early calving cows; check infrastructure for damage post flooding; assess crops & replace baleage; Seek agronomy advice re flooded FB crops;