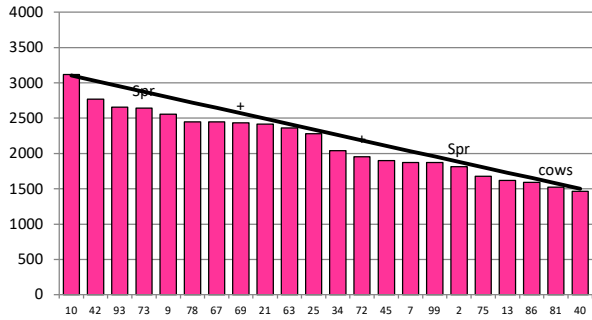


Date 29-04-20

Herd size (cows)	186	Average Cover	2149
Target residual (kg DM/ha)	1500	Average Growth	34
Target pasture intake (kg DM/cow)	12.5	Farmlet area	62.5
Target Area offered (ha/day)	1.45	Target rotation length	43
Last week actual rotation (d)	41	Target demand	37
Last week supp (kg DM/cow)	1.9	YTD supp (kg DM/cow)	406
Last week N (kg N/ha)	0	Fert N YTD	191
Milk yield (L/cow)	10.9	Effluent N YTD	0
Fat%	N	Last wk MS	W
Prot%	E	YTD MS/cow	E
SCC	X	YTD MS/ha	E
Average BCS	4.5	% less than BCS 4.5	18%

Herd size (cows)	181	Average Cover	2226
Target residual (kg DM/ha)	1500	Average Growth	38
Target pasture intake (kg DM/cow)	13.3	Farmlet area	63.6
Target Area offered (ha/day)	1.45	Target rotation length	44
Last week actual rotation (d)	43	Target demand	38
Last week supp (kg DM/cow)	2.6	YTD supp (kg DM/cow)	249
Last week N (kg N/ha)	0	Fert N YTD	175
Milk yield (L/cow)	10.6	Effluent N YTD	0
Fat%	N	Last wk MS	W
Prot%	E	YTD MS/cow	E
SCC	X	YTD MS/ha	E
Average BCS	4.3	% less than BCS 4.5	49%

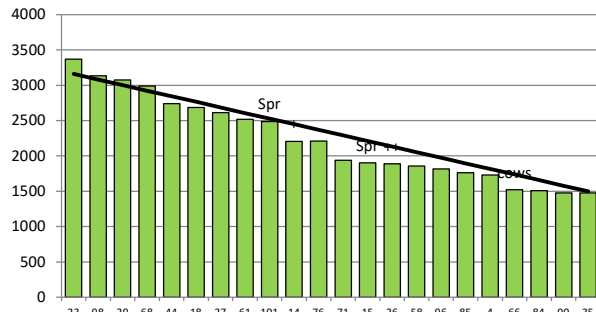
Standard Kale



	10	42	93	73	9	78	67	69	21	63	25	34	72	45	7	99	2	75	13	86	81	40
DaysGrazed3	39	38	30	27	22	28	32	25	33	21	19	1	13	15	6	11	17	3	3	1	0	8
N_3	182	186	221	174	109	175	198	164	185	199	187	188	221	176	135	188	148	227	177	193	172	164
Growth3	54	84	32	16	60	18	18	44	22	30	60	0	27	16	52	38	6	0	0	0	0	2

Farmlet notes: Visual APC 2157; Visual GR 41; Will increase in-shed feeding & baleage to fill deficit in feed wedge for next week; All culls still in milk; 25 light BCS early calvers to be dried off next week; Targeting 15 kg DMI for current dries by allocating 10% of pdk for 2 days with baleage behind milkers; 150 kg DM/ha drop in APC this week; BCS increasing

Standard Fodder Beet



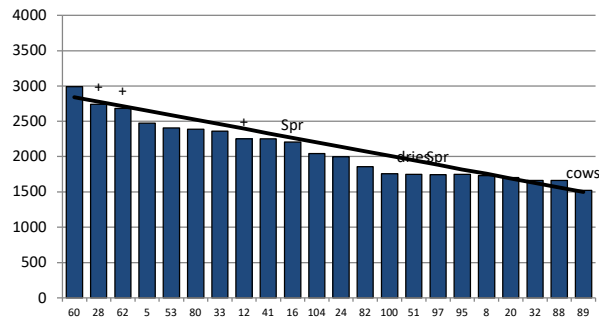
	23	98	29	68	44	18	27	61	101	14	76	71	15	26	58	96	85	4	66	84	90	35
DaysGrazed2	43	29	36	37	34	0	27	33	31	21	23	19	9	14	17	13	7	11	0	1	3	5
N_2	185	137	240	193	182	213	189	188	234	165	197	177	159	179	181	184	194	219	188	185	103	103
Growth2	86	76	38	42	44	42	20	30	30	52	32	28	32	40	16	16	36	32	0	0	0	0

Farmlet notes: Visual APC 2204; Visual GR 36; APC on track to budget; Increasing fodder beet allocation to 2.5 kg DM/cow/day over the next wk, in situ grazing immediately after milking & removing all inshed feeding to low BCS cows; All empty culls still in milk; 10 light BCS early calvers to be dried off next week; Feed wedge looking good but BCS gain is slowing.

Herd size (cows)	152	Average Cover	2085
Target residual (kg DM/ha)	1500	Average Growth	31
Target pasture intake (kg DM/cow)	12.8	Farmlet area	63.5
Target Area offered (ha/day)	1.45	Target rotation length	44
Last week rotation avg	42	Target demand	31
Last week supp (kg DM/cow)	2.1	YTD supp (kg DM/cow)	347
Last week N (kg N/ha)	0	Fert N YTD	63
Milk yield	11.4	Effluent N YTD	0
Fat%	N	Last wk MS	W
Prot%	E	YTD MS/cow	E
SCC	X	YTD MS/ha	E
Average BCS	4.5	% less than BCS 4.5	18%

Herd size (cows)	130	Average Cover	2024
Target residual (kg DM/ha)	1500	Average Growth	24
Target pasture intake (kg DM/cow)	12.8	Farmlet area	63.9
Target Area offered (ha/day)	1.45	Target rotation length	44
Last week rotation avg	48	Target demand	26
Last week supp (kg DM/cow)	3.4	YTD supp (kg DM/cow)	258
Last week N (kg N/ha)	0	Fert N YTD	60
Milk yield	11.7	Effluent N YTD	0
Fat%	N	Last wk MS	W
Prot%	E	YTD MS/cow	E
SCC	X	YTD MS/ha	E
Average BCS	4.4	% less than BCS 4.5	38%

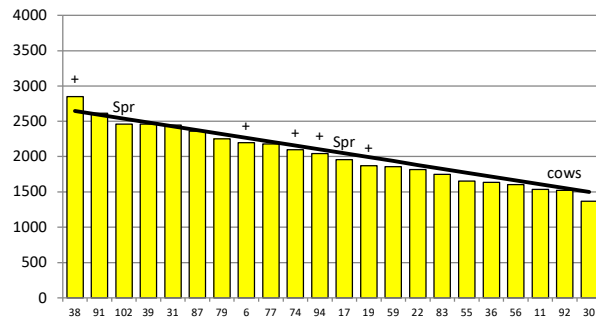
Low Impact Kale



	60	28	62	5	53	80	33	12	41	16	104	24	82	100	51	97	95	8	20	32	88	89
DaysGrazed1	42	37	36	31	34	27	33	28	25	23	5	19	11	13	0	15	9	1	21	17	5	0
N_1	68	56	53	40	51	52	72	66	51	48	48	51	65	72	40	51	50	76	65	48	55	53
Growth1	66	24	40	58	16	44	24	4	26	48	76	36	14	22	0	28	8	0	12	10	0	0

Farmlet notes: Visual APC 2069; Visual GR 34; Will hold in-shed feeding for next week & fill any deficits with baleage; All culls still in milk; 31 light BCS early calvers to be dried off next week; Targeting 15 kg DMI for current dries by allocating 10% of pdk for 2 days with baleage behind milkers; APC has held this week & average BCS is increasing

Low Impact Fodder Beet



	38	91	102	39	31	87	79	6	77	74	94	17	19	59	22	83	55	36	56	11	92	30
DaysGrazed4	56	69	56	50	54	53	44	59	44	71	48	55	50	66	72	53	67	52	49	68	70	52
N_4	90	4	18	42	20	30	10	30	22	34	6	26	17	14	32	0	7	14	14	0	0	0
Growth4	90	4	18	42	20	30	10	30	22	34	6	26	17	14	32	0	7	14	14	0	0	0

Farmlet notes: Visual APC 2014; Visual GR 28; APC has held this week but still behind target; Increasing fodder beet allocation to 2.5 kg DM/cow/d over the next wk, in situ grazing immediately after milking & removing all inshed feeding to low BCS cows; All culls off platform; 2 light BCS early calvers to be dried off next week; consistent performance in the last wk.