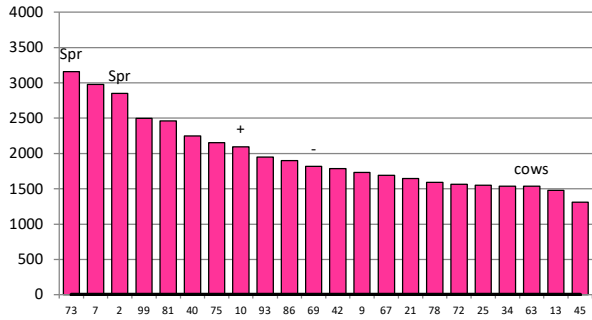


Date 27-05-20

Herd size (cows)	203	Average Cover	1957
Target residual (kg DM/ha)	1500	Average Growth	20
Target pasture intake (kg DM/cow)		Farmlet area	62.5
Target Area offered (ha/day)		Target rotation length	#DIV/0!
Last week actual rotation (d)	43	Target demand	0
Last week supp (kg DM/cow)	1.1	YTD supp (kg DM/cow)	466
Last week N (kg N/ha)	0	Fert N YTD	191
Milk yield (L/cow)	#REF!	Effluent N YTD	0
Fat%	N	Last wk MS	W
Prot%	E	YTD MS/cow	E
SCC	X	YTD MS/ha	E
Average BCS	T	% less than BCS 4.5	K

Standard Kale

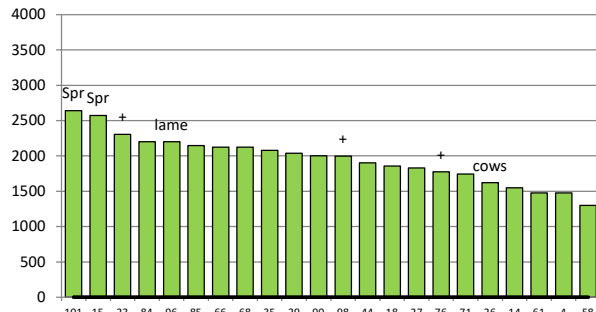


	73	7	2	99	81	40	75	10	93	86	69	42	9	67	21	78	72	25	34	63	13	45
DaysGrazed3	23	34	45	39	27	36	31	25	17	29	9	21	11	16	19	14	4	6	4	7	3	1
N_3	174	135	148	188	172	164	227	182	221	193	164	186	109	198	185	175	221	187	188	199	177	176
Growth3	36	54	4	24	40	2	9	14	11	0	38	18	24	4	0	2	0	0	0	0	0	0

Farmlet notes: Visual APC 2054; Visual GR 19: Drying off is complete & cows are now transitioning onto crop in 2 mobs of approx 100 - R2's + light MA cows or normal MA cows; targeting 13-14 kg DM allocation, started with 5 kg kale & increasing by 1 kg DM/cow/day up to 11.3 over 7 days; Cows to be BCS next week & mobs finalised; No culls away this week

Herd size (cows)	203	Average Cover	1952
Target residual (kg DM/ha)	1500	Average Growth	15
Target pasture intake (kg DM/cow)		Farmlet area	63.6
Target Area offered (ha/day)		Target rotation length	#DIV/0!
Last week actual rotation (d)	50	Target demand	0
Last week supp (kg DM/cow)	2.1	YTD supp (kg DM/cow)	321
Last week N (kg N/ha)	0	Fert N YTD	175
Milk yield (L/cow)	#REF!	Effluent N YTD	0
Fat%	N	Last wk MS	W
Prot%	E	YTD MS/cow	E
SCC	X	YTD MS/ha	E
Average BCS	T	% less than BCS 4.5	K

Standard Fodder Beet

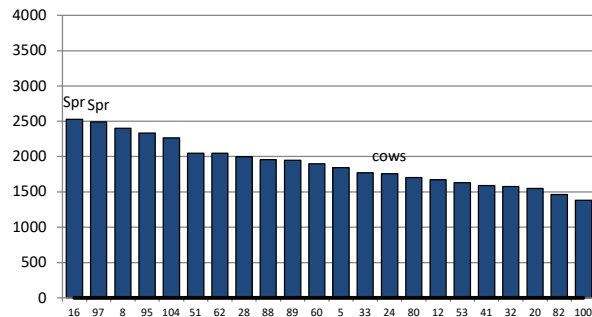


	101	15	23	84	96	85	66	68	35	29	90	98	44	18	27	76	71	26	14	61	4	58
DaysGrazed2	16	37	25	29	1	35	27	21	33	23	31	19	13	17	15	11	10	7	9	3	1	1
N_2	234	159	185	185	184	194	188	193	103	240	103	137	182	213	189	197	177	179	165	188	219	181
Growth2	4	10	2	25	0	20	12	52	12	6	27	22	20	15	10	4	18	0	2	0	0	0

Farmlet notes: Visual APC 2011; Visual GR 18: Drying off is complete & cows are now transitioning onto crop in 2 mobs of 100 - R2's + light MA cows or normal MA cows; targeting 12-13 kg DM allocation, started with 2 or 4.5 kg beet & increasing by 0.5 kg DM/cow/day up to 9.5 kg over 10-15 days; Cows to be BCS next week & mobs finalised; No culls away this wk.

Herd size (cows)	171	Average Cover	1906
Target residual (kg DM/ha)	1500	Average Growth	13
Target pasture intake (kg DM/cow)		Farmlet area	63.5
Target Area offered (ha/day)		Target rotation length	#DIV/0!
Last week rotation avg	45	Target demand	0
Last week supp (kg DM/cow)	0.6	YTD supp (kg DM/cow)	399
Last week N (kg N/ha)	0	Fert N YTD	63
Milk yield	#REF!	Effluent N YTD	0
Fat%	N	Last wk MS	W
Prot%	E	YTD MS/cow	E
SCC	X	YTD MS/ha	E
Average BCS	T	% less than BCS 4.5	K

Low Impact Kale

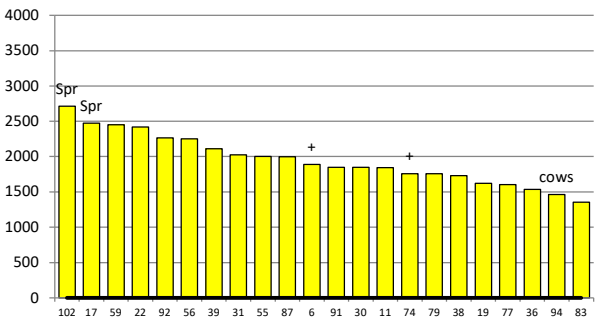


	16	97	8	95	104	51	62	28	88	89	60	5	33	24	80	12	53	41	32	20	82	100
DaysGrazed1	51	43	26	37	33	28	19	23	33	24	22	19	16	7	14	11	11	8	6	3	1	3
N_1	48	51	76	50	48	40	53	56	55	53	68	40	72	51	52	66	51	51	48	65	65	72
Growth1	10	27	7	28	26	3	11	6	6	5	22	8	22	0	12	1	18	4	0	0	0	0

Farmlet notes: Visual APC 1947; Visual GR 14: Drying off is complete & cows are now transitioning onto crop in 2 mobs -76 R2's + light MA cows or 100 normal MA cows; targeting 13-14 kg DM allocation, started with 5 kg kale & increasing by 1 kg DM/cow/day up to 11.3 over 7 days; Cows to be BCS next week & mobs finalised; No culls away this week

Herd size (cows)	170	Average Cover	1954
Target residual (kg DM/ha)	1500	Average Growth	18
Target pasture intake (kg DM/cow)		Farmlet area	63.9
Target Area offered (ha/day)		Target rotation length	#DIV/0!
Last week rotation avg	74	Target demand	0
Last week supp (kg DM/cow)	2.8	YTD supp (kg DM/cow)	329
Last week N (kg N/ha)	0	Fert N YTD	60
Milk yield	#REF!	Effluent N YTD	0
Fat%	N	Last wk MS	W
Prot%	E	YTD MS/cow	E
SCC	X	YTD MS/ha	E
Average BCS	T	% less than BCS 4.5	K

Low Impact Fodder Beet



	102	17	59	22	92	56	39	31	55	87	6	91	30	11	74	79	38	19	77	36	94	83
DaysGrazed4	23	42	37	39	27	35	21	19	41	15	17	23	30	30	11	13	9	12	4	1	7	33
N_4	56	55	66	72	70	49	50	54	67	53	59	69	52	68	71	44	56	50	44	52	48	53
Growth4	6	26	43	17	12	28	50	18	9	44	30	14	5	-64	12	26	36	22	0	0	0	0

Farmlet notes: Visual APC 2037; Visual GR 21: Drying off is complete & cows are now transitioning onto crop in 2 mobs -74 R2's + light MA cows or 96 normal MA cows; targeting 12-13 kg DM allocation, started with 2 or 4.5 kg beet & increasing by 0.5 kg DM/cow/day up to 9.5 kg over 10-15 days; Cows to be BCS next week & mobs finalised; No culls away this week