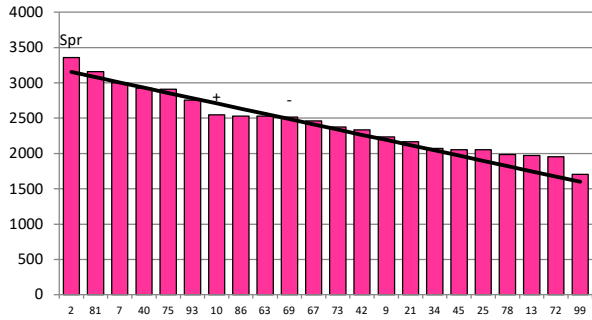


Date 12-08-20

Herd size (cows)	88	Average Cover	2437
Target residual (kg DM/ha)	1600	Average Growth	16
Target pasture intake (kg DM/cow)	15	Farmlet area	62.5
Target Area offered (ha/day)	0.85	Target rotation length	74
Last week actual rotation (d)	#####	Target demand	21
Last week supp (kg DM/cow)	0.0	YTD supp (kg DM/cow)	0
Last week N (kg N/ha)	0	Fert N YTD	0
Milk yield (L/cow)	10.9	Effluent N YTD	0
Fat%	N	Last wk MS	W
Prot%	E	YTD MS/cow	E
SCC	X	YTD MS/ha	E
Average BCS	T	% less than BCS 4.5	K

Standard Kale

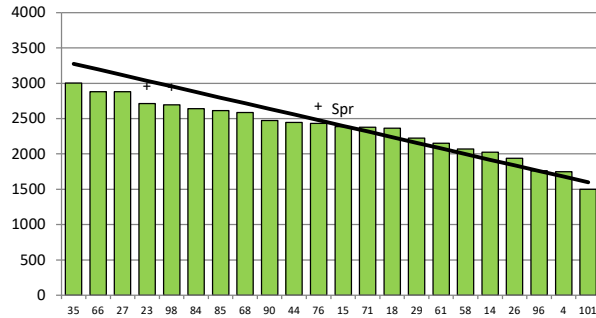


	2	81	7	40	75	93	10	86	63	69	67	73	42	9	21	34	45	25	78	13	72	99
DaysGrazed3	122	104	111	113	108	94	102	106	84	86	93	12	98	88	96	81	78	83	91	80	81	7
N_3	0	0	0	0	0	0	0	0	0	0	0	0	0	0	0	0	0	0	0	0	0	0
Growth3	54	10	14	2	12	28	7	18	20	32	20	94	-10	14	8	6	12	-8	2	-2	4	0

Farmlet notes: 11% of the herd has calved; APC is above the spring feed budget by 100 kg DM/ha and area allocation is on track with the SRP. The current feed budget allows a pasture only diet for colostrum and milkers. Springers are on a 50:50 diet of pasture and baleage.

Herd size (cows)	95	Average Cover	2360
Target residual (kg DM/ha)	1600	Average Growth	14
Target pasture intake (kg DM/cow)	15	Farmlet area	63.6
Target Area offered (ha/day)	0.85	Target rotation length	75
Last week actual rotation (d)	161	Target demand	22
Last week supp (kg DM/cow)	0.0	YTD supp (kg DM/cow)	0
Last week N (kg N/ha)	0	Fert N YTD	0
Milk yield (L/cow)	11.7	Effluent N YTD	0
Fat%	N	Last wk MS	W
Prot%	E	YTD MS/cow	E
SCC	X	YTD MS/ha	E
Average BCS	T	% less than BCS 4.5	K

Standard Fodder Beet

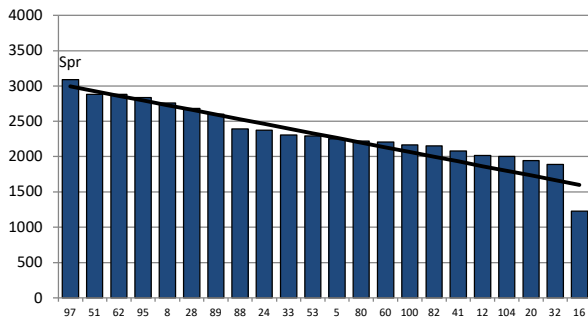


	35	66	27	23	98	84	85	68	90	44	76	15	71	18	29	61	58	14	26	96	4	101
DaysGrazed2	110	104	92	102	96	106	112	98	108	90	88	114	87	94	100	80	78	86	84	3	78	14
N_2	0	0	0	0	0	0	0	0	0	0	0	0	0	0	0	0	0	0	0	0	0	0
Growth2	24	20	-4	-8	30	32	12	14	-16	48	30	-12	48	24	-18	22	24	-16	18	0	7	0

Farmlet notes: 9% of the herd has calved; APC is above the spring feed budget by 75 kg DM/ha and area allocation is on track with the SRP. The current feed budget allows a pasture only diet for colostrum and milkers. Springers are on a 50:50 diet of pasture and baleage.

Herd size (cows)	79	Average Cover	2331
Target residual (kg DM/ha)	1600	Average Growth	16
Target pasture intake (kg DM/cow)	15	Farmlet area	63.5
Target Area offered (ha/day)	0.85	Target rotation length	75
Last week rotation avg	132	Target demand	19
Last week supp (kg DM/cow)	0.0	YTD supp (kg DM/cow)	0
Last week N (kg N/ha)	0	Fert N YTD	0
Milk yield	12.6	Effluent N YTD	0
Fat%	N	Last wk MS	W
Prot%	E	YTD MS/cow	E
SCC	X	YTD MS/ha	E
Average BCS	T	% less than BCS 4.5	K

Low Impact Kale

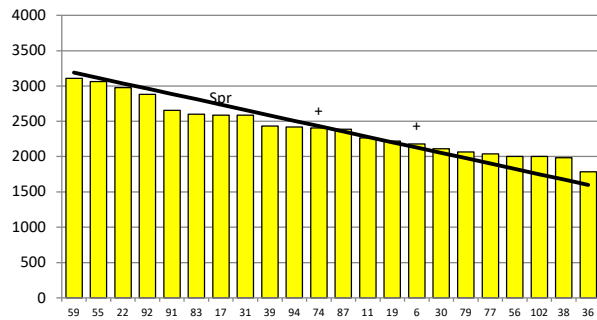


	97	51	62	95	8	28	89	88	24	33	53	5	80	60	100	82	41	12	104	20	32	16
DaysGrazed1	120	105	96	114	103	100	101	110	84	93	88	96	91	99	80	78	85	88	0	0	0	0
N_1	0	0	0	0	0	0	0	0	0	0	0	0	0	0	0	0	0	0	0	0	0	0
Growth1	44	38	36	8	1	30	16	-18	6	-10	62	4	8	10	12	32	12	28	0	-12	8	0

Farmlet notes: 10% of the herd has calved; APC is above the spring feed budget by 100 kg DM/ha and area allocation is on track with the SRP. The current feed budget allows a pasture only diet for colostrum and milkers. Springers are on a 50:50 diet of pasture and baleage.

Herd size (cows)	90	Average Cover	2398
Target residual (kg DM/ha)	1600	Average Growth	15
Target pasture intake (kg DM/cow)	15	Farmlet area	63.9
Target Area offered (ha/day)	0.85	Target rotation length	75
Last week rotation avg	150	Target demand	21
Last week supp (kg DM/cow)	0.0	YTD supp (kg DM/cow)	0
Last week N (kg N/ha)	0	Fert N YTD	0
Milk yield	13.8	Effluent N YTD	0
Fat%	N	Last wk MS	W
Prot%	E	YTD MS/cow	E
SCC	X	YTD MS/ha	E
Average BCS	T	% less than BCS 4.5	K

Low Impact Fodder Beet



	59	55	22	92	91	83	17	31	39	94	74	87	11	19	6	30	79	77	56	102	38	36
DaysGrazed4	114	118	116	104	100	110	119	96	98	84	88	92	107	89	94	107	90	81	0	0	86	78
N_4	0	0	0	0	0	0	0	0	0	0	0	0	0	0	0	0	0	0	0	0	0	0
Growth4	18	10	16	18	28	16	-4	6	14	32	24	14	5	-2	4	6	24	24	0	0	24	17

Farmlet notes: 16% of the herd has calved; APC is above the spring feed budget by 80 kg DM/ha and area allocation is on track with the SRP. The current feed budget allows a pasture only diet for colostrum and milkers. Springers are on a 50:50 diet of pasture and baleage.