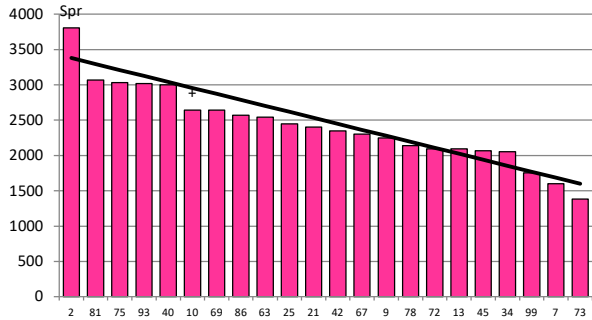


Date 19-08-20

Herd size (cows)	105	Average Cover	2442
Target residual (kg DM/ha)	1600	Average Growth	17
Target pasture intake (kg DM/cow)	16.1	Farmlet area	62.5
Target Area offered (ha/day)	0.95	Target rotation length	66
Last week actual rotation (d)	165	Target demand	27
Last week supp (kg DM/cow)	0.0	YTD supp (kg DM/cow)	0
Last week N (kg N/ha)	0	Fert N YTD	0
Milk yield (L/cow)	14.0	Effluent N YTD	0
Fat%	N	Last wk MS	W
Prot%	E	YTD MS/cow	E
SCC	X	YTD MS/ha	E
Average BCS	4.9	% less than BCS 4.5	8%

Standard Kale

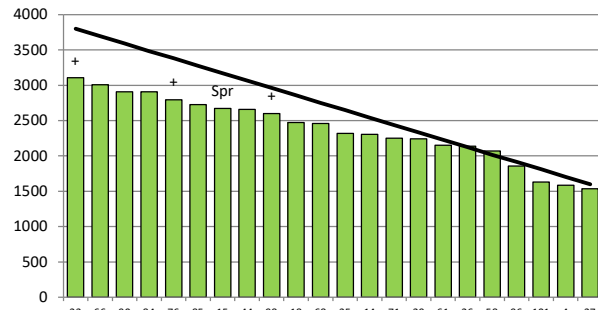


	2	81	75	93	40	10	69	86	63	25	21	42	67	9	78	72	13	45	34	99	7	73	
DaysGrazed3	129	111	115	101	120	109	93	113	91	90	103	105	100	95	98	88	87	85	0	13	0	21	
N_3	0	0	0	0	0	0	0	0	0	0	0	0	0	0	0	0	0	0	0	0	0	0	0
Growth3	62	3	18	38	11	13	18	6	2	56	34	2	6	2	16	20	18	2	0	7	0	1	

Farmlet notes: Visual APC 2444; Visual GR 14; 39% of herd calved; 36 % still on crop but only 1 wk of crop left. Increased kale allocation to dries as crop starting to lodge & stems getting woody; late dries will either join the springer mob or follow the milkers to clean up residuals depending on nos.; kale milkers split this week so now have a Std Kale milker mob;

Herd size (cows)	129	Average Cover	2381
Target residual (kg DM/ha)	1600	Average Growth	20
Target pasture intake (kg DM/cow)	16.2	Farmlet area	63.6
Target Area offered (ha/day)	0.95	Target rotation length	67
Last week actual rotation (d)	102	Target demand	33
Last week supp (kg DM/cow)	0.0	YTD supp (kg DM/cow)	0
Last week N (kg N/ha)	0	Fert N YTD	0
Milk yield (L/cow)	14.8	Effluent N YTD	0
Fat%	N	Last wk MS	W
Prot%	E	YTD MS/cow	E
SCC	X	YTD MS/ha	E
Average BCS	5.1	% less than BCS 4.5	5%

Standard Fodder Beet

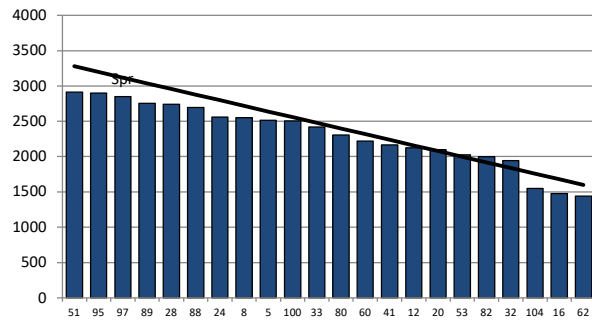


	23	66	90	84	76	85	15	44	98	18	68	35	14	71	29	61	26	58	96	101	4	27	
DaysGrazed2	109	111	115	113	95	119	121	97	103	101	105	3	93	94	107	87	91	85	10	21	85	0	
N_2	0	0	0	0	0	0	0	0	0	0	0	0	0	0	0	0	0	0	0	0	0	0	0
Growth2	36	18	46	38	52	16	3	30	6	16	2	0	20	11	3	18	28	0	14	19	3	0	

Farmlet notes: Visual APC 2396; Visual GR 18; 41% of herd calved; 36 % still on crop being offered 9.5 kg FB & 3.5 kg baleage with DCP; fodder beet milkers will be split into Std and LI mobs this weekend so will be grazing their own paddocks; All cows calved up till 19th August tail painted this morning & will be metrichecked in 14 days time; milker diet all pasture

Herd size (cows)	99	Average Cover	2310
Target residual (kg DM/ha)	1600	Average Growth	16
Target pasture intake (kg DM/cow)	16.1	Farmlet area	63.5
Target Area offered (ha/day)	0.95	Target rotation length	67
Last week rotation avg	153	Target demand	25
Last week supp (kg DM/cow)	0.0	YTD supp (kg DM/cow)	0
Last week N (kg N/ha)	0	Fert N YTD	0
Milk yield	13.8	Effluent N YTD	0
Fat%	N	Last wk MS	W
Prot%	E	YTD MS/cow	E
SCC	X	YTD MS/ha	E
Average BCS	4.9	% less than BCS 4.5	8%

Low Impact Kale

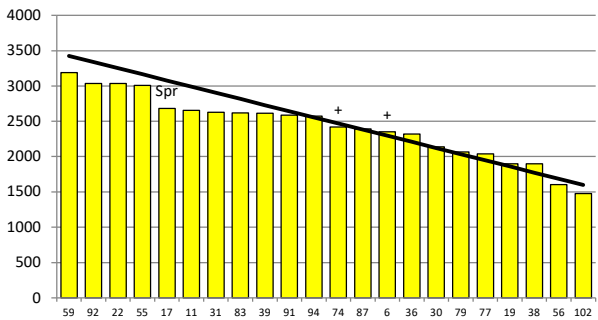


	51	95	87	99	28	88	24	8	5	100	33	80	60	41	12	20	53	82	32	104	16	62	
DaysGrazed1	112	121	127	108	107	117	91	110	103	87	100	98	106	92	95	87	95	85	90	6	7	0	0
N_1	0	0	0	0	0	0	0	0	0	0	0	0	0	0	0	0	0	0	0	0	0	0	0
Growth1	4	9	7	22	8	30	26	3	38	48	16	12	2	12	16	22	11	10	8	0	0	0	0

Farmlet notes: Visual APC 2324; Visual GR 13; 41% of herd calved; 39 % still on crop but only 1 wk of crop left. Increased kale allocation to dries as crop starting to lodge & stems getting woody; late dries will either join the springer mob or follow the milkers to clean up residuals depending on nos.; kale milkers split this week so now have a LI Kale milker mob;

Herd size (cows)	107	Average Cover	2419
Target residual (kg DM/ha)	1600	Average Growth	16
Target pasture intake (kg DM/cow)	16.2	Farmlet area	63.9
Target Area offered (ha/day)	0.95	Target rotation length	67
Last week rotation avg	159	Target demand	27
Last week supp (kg DM/cow)	0.0	YTD supp (kg DM/cow)	0
Last week N (kg N/ha)	0	Fert N YTD	0
Milk yield	15.9	Effluent N YTD	0
Fat%	N	Last wk MS	W
Prot%	E	YTD MS/cow	E
SCC	X	YTD MS/ha	E
Average BCS	4.9	% less than BCS 4.5	6%

Low Impact Fodder Beet



	59	92	22	55	17	11	31	83	39	91	94	74	87	6	36	30	79	77	19	38	56	102
DaysGrazed4	121	111	123	125	126	114	103	117	105	107	91	95	99	101	85	114	97	88	96	93	5	0
N_4	0	0	0	0	0	0	0	0	0	0	0	0	0	0	0	0	0	0	0	0	0	0
Growth4	12	22	8	7	1	56	6	3	26	13	22	2	10	24	76	4	2	18	11	2	0	0

Farmlet notes: Visual APC 2388; Visual GR 11; 42% of herd calved; 37 % still on crop being offered 9.5 kg FB & 3.5 kg baleage with DCP; fodder beet milkers will be split into Std and LI mobs this weekend so will be grazing their own paddocks; All cows calved up till 19th August tail painted this morning & will be metrichecked in 14 days time; milker diet all pasture