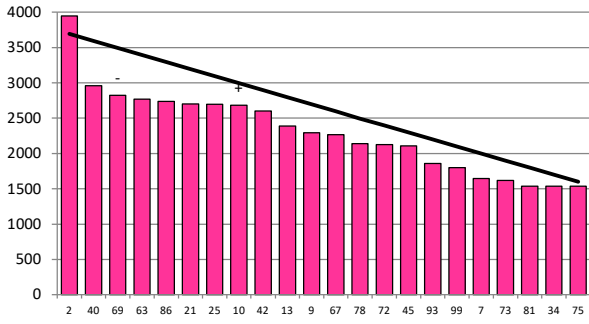


Date 26-08-20

Herd size (cows)	130	Average Cover	2340
Target residual (kg DM/ha)	1600	Average Growth	20
Target pasture intake (kg DM/cow)	16.9	Farmlet area	61.1
Target Area offered (ha/day)	1.05	Target rotation length	58
Last week actual rotation (d)	48	Target demand	36
Last week supp (kg DM/cow)	0.0	YTD supp (kg DM/cow)	0
Last week N (kg N/ha)	0	Fert N YTD	0
Milk yield (L/cow)	17.1	Effluent N YTD	0
Fat%	4.5	Last wk MS	1.6
Prot%	3.7	YTD MS/cow	42
SCC	195	YTD MS/ha	130
Average BCS	T	% less than BCS 4.5	K

Standard Kale

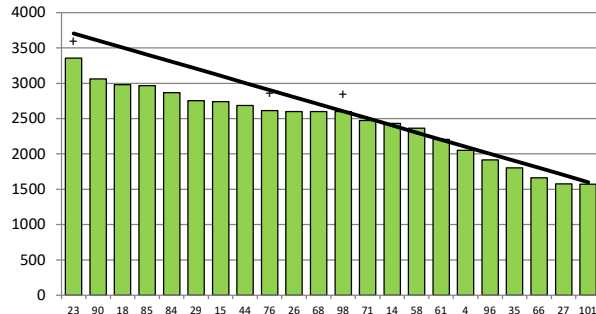


	2	40	69	63	86	21	25	10	42	13	9	67	78	72	45	93	99	7	73	81	34	75
DaysGrazed3	0	127	100	98	120	110	97	116	112	94	102	107	105	95	92	2	20	6	28	0	5	0
N_3	0	0	0	0	0	0	0	0	0	0	0	0	0	0	0	0	0	0	0	0	0	0
Growth3	0	2	26	32	24	42	36	6	36	42	6	0	4	6	0	7	0	34	0	0	0	0

Farmlet notes: Visual APC 2352; Visual GR 15; 54% of the herd has calved; remaining 25% that are still on crop will join the springers on Saturday; late dry mob to be drafted early next week to follow the milkers to clean up residuals; APC is 120 kg DM above SRP target & the farmlet has a buffer of 1.5 ha area available; springers grazing on this farmlet for next week

Herd size (cows)	130	Average Cover	2451
Target residual (kg DM/ha)	1600	Average Growth	30
Target pasture intake (kg DM/cow)	17	Farmlet area	63.6
Target Area offered (ha/day)	1.05	Target rotation length	61
Last week actual rotation (d)	104	Target demand	35
Last week supp (kg DM/cow)	0.0	YTD supp (kg DM/cow)	0
Last week N (kg N/ha)	0	Fert N YTD	0
Milk yield (L/cow)	18.2	Effluent N YTD	0
Fat%	4.9	Last wk MS	1.6
Prot%	3.7	YTD MS/cow	42
SCC	220	YTD MS/ha	119
Average BCS	T	% less than BCS 4.5	K

Standard Fodder Beet

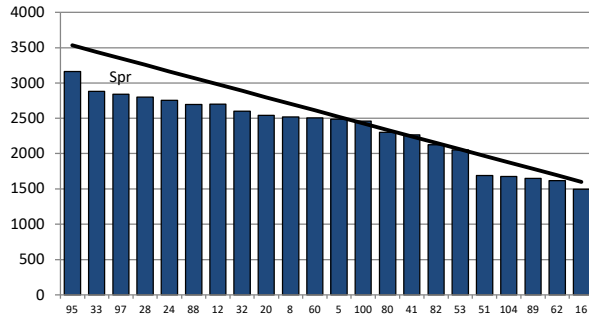


	23	90	18	85	84	29	15	44	76	26	68	98	71	14	58	61	4	96	35	66	27	101
DaysGrazed3	116	122	108	126	120	114	0	104	102	98	112	110	101	100	92	94	92	17	10	0	6	28
N_2	0	0	0	0	0	0	0	0	0	0	0	0	0	0	0	0	0	0	0	0	0	0
Growth2	36	22	72	34	8	73	0	4	17	66	20	0	32	18	42	8	67	8	15	0	0	3

Farmlet notes: Visual APC 2383; Visual GR 15; 53% of the herd has calved and 29% still on fodder beet being offered 9 kg FB and 4 kg baleage with DCP dusted on baleage; APC is 250 kg above SRP target & farmlet has a 3.5 ha area buffer; springers now grazing a pdk from this farmlet; increased DCP to springers & colostrum to 100g/cow/d after a run of down cows

Herd size (cows)	120	Average Cover	2356
Target residual (kg DM/ha)	1600	Average Growth	28
Target pasture intake (kg DM/cow)	16.9	Farmlet area	63.5
Target Area offered (ha/day)	1.05	Target rotation length	60
Last week rotation avg	78	Target demand	32
Last week supp (kg DM/cow)	0.0	YTD supp (kg DM/cow)	0
Last week N (kg N/ha)	0	Fert N YTD	0
Milk yield	17.8	Effluent N YTD	0
Fat%	4.5	Last wk MS	1.6
Prot%	3.9	YTD MS/cow	41
SCC	111	YTD MS/ha	112
Average BCS	T	% less than BCS 4.5	K

Low Impact Kale

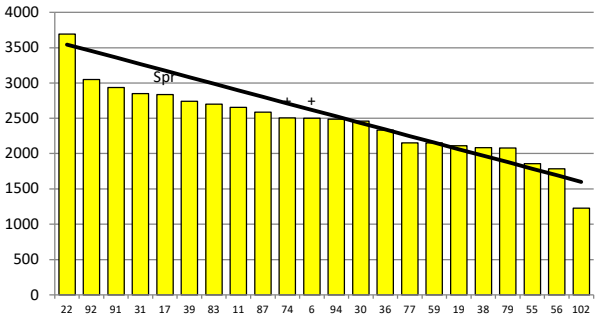


	95	33	97	28	24	88	12	32	20	8	60	5	100	80	41	82	53	51	104	89	62	16
DaysGrazed1	128	107	134	114	98	124	102	97	94	117	113	110	94	105	99	92	102	3	13	0	6	14
N_1	0	0	0	0	0	0	0	0	0	0	0	0	0	0	0	0	0	0	0	0	0	0
Growth1	37	66	2	9	28	18	82	94	64	1	40	10	11	7	14	18	4	0	18	0	0	2

Farmlet notes: Visual APC 2314; Visual GR 23; 54% of the herd has calved with the remaining 25% of dries finishing their crop at the weekend; dries will join springers till early next week then late dries to be drafted out and used to clean up behind milkers; APC 240 kg DM above SRP target & 5 ha area buffer to eat through; no supplements being offered

Herd size (cows)	120	Average Cover	2443
Target residual (kg DM/ha)	1600	Average Growth	20
Target pasture intake (kg DM/cow)	17	Farmlet area	63.9
Target Area offered (ha/day)	1.05	Target rotation length	61
Last week rotation avg	64	Target demand	32
Last week supp (kg DM/cow)	0.0	YTD supp (kg DM/cow)	0
Last week N (kg N/ha)	0	Fert N YTD	0
Milk yield	19.0	Effluent N YTD	0
Fat%	4.8	Last wk MS	1.8
Prot%	3.8	YTD MS/cow	48
SCC	205	YTD MS/ha	126
Average BCS	T	% less than BCS 4.5	K

Low Impact Fodder Beet



	22	92	91	31	17	39	83	11	87	74	6	94	30	36	77	59	19	38	79	55	56	102
DaysGrazed4	0	118	114	110	133	112	124	121	106	102	108	98	121	92	95	1	103	100	104	4	12	4
N_4	0	0	0	0	0	0	0	0	0	0	0	0	0	0	0	0	0	0	0	0	0	0
Growth4	0	2	50	32	23	18	11	0	28	12	22	2	46	2	16	0	30	26	2	0	26	0

Farmlet notes: Visual APC 2369; Visual GR 16; 56% of the herd has calved & 27% of late calvers are still on fodder beet being offered 9 kg FB & 4 kg baleage with DCP; APC 140 kg DM above SRP target & 5 ha area buffer to eat through; increased DCP supplementation to 100 g/cow/d to springers & colostrums after a run of down cows; blood test to check levels