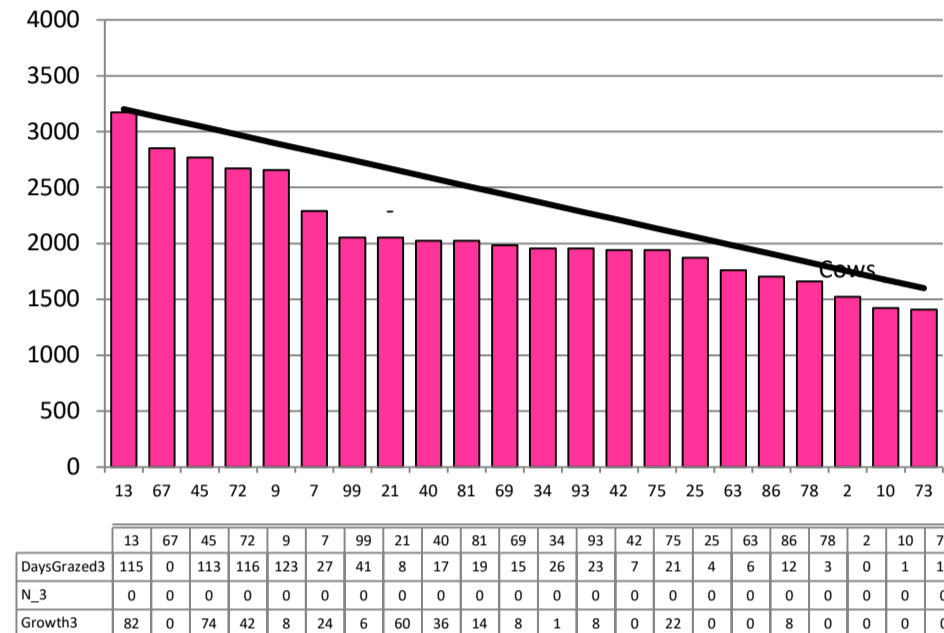


Date 16-09-20

| | | | |
|-----------------------------------|------|------------------------|------|
| Herd size (cows) | 175 | Average Cover | 2093 |
| Target residual (kg DM/ha) | 1600 | Average Growth | 28 |
| Target pasture intake (kg DM/cow) | 18.3 | Farmlet area | 61.1 |
| Target Area offered (ha/day) | 2 | Target rotation length | 31 |
| Last week actual rotation (d) | 37 | Target demand | 52 |
| Last week supp (kg DM/cow) | 0.0 | YTD supp (kg DM/cow) | 0 |
| Last week N (kg N/ha) | 0 | Fert N YTD | 0 |
| Milk yield (L/cow) | 22.7 | Effluent N YTD | 0 |
| Fat% | N | Last wk MS | W |
| Prot% | E | YTD MS/cow | E |
| SCC | X | YTD MS/ha | E |
| Average BCS | T | % less than BCS 4.5 | K |

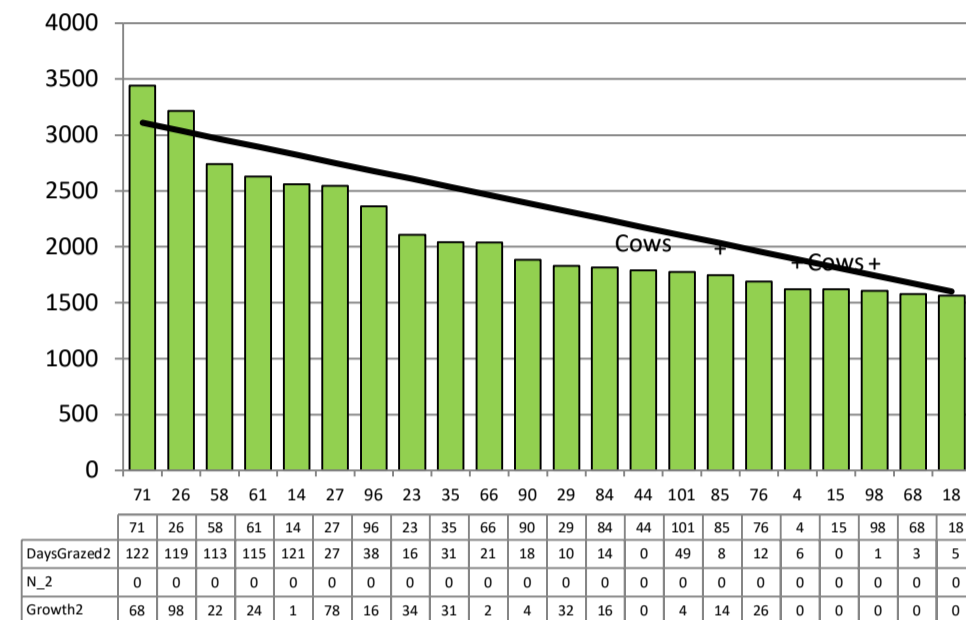
Standard Kale



Farmlet notes: Visual APC 2063; Visual GR 22; 83% calved; decrease rotation length to 31 days; Start inshed feeding at 0.5 kg DM/cow/d & increase to 2 kg/cow by Monday; supplement baleage if still tight; merge springers with FB springers once current pdk is finished; continue with dry mob to clean up behind milkers; apply 30kg N/ha as ammo 31 when weather allows.

| | | | |
|-----------------------------------|------|------------------------|------|
| Herd size (cows) | 165 | Average Cover | 2103 |
| Target residual (kg DM/ha) | 1600 | Average Growth | 29 |
| Target pasture intake (kg DM/cow) | 18.3 | Farmlet area | 63.6 |
| Target Area offered (ha/day) | 2 | Target rotation length | 32 |
| Last week actual rotation (d) | 43 | Target demand | 47 |
| Last week supp (kg DM/cow) | 0.0 | YTD supp (kg DM/cow) | 0 |
| Last week N (kg N/ha) | 0 | Fert N YTD | 0 |
| Milk yield (L/cow) | 22.0 | Effluent N YTD | 0 |
| Fat% | N | Last wk MS | W |
| Prot% | E | YTD MS/cow | E |
| SCC | X | YTD MS/ha | E |
| Average BCS | T | % less than BCS 4.5 | K |

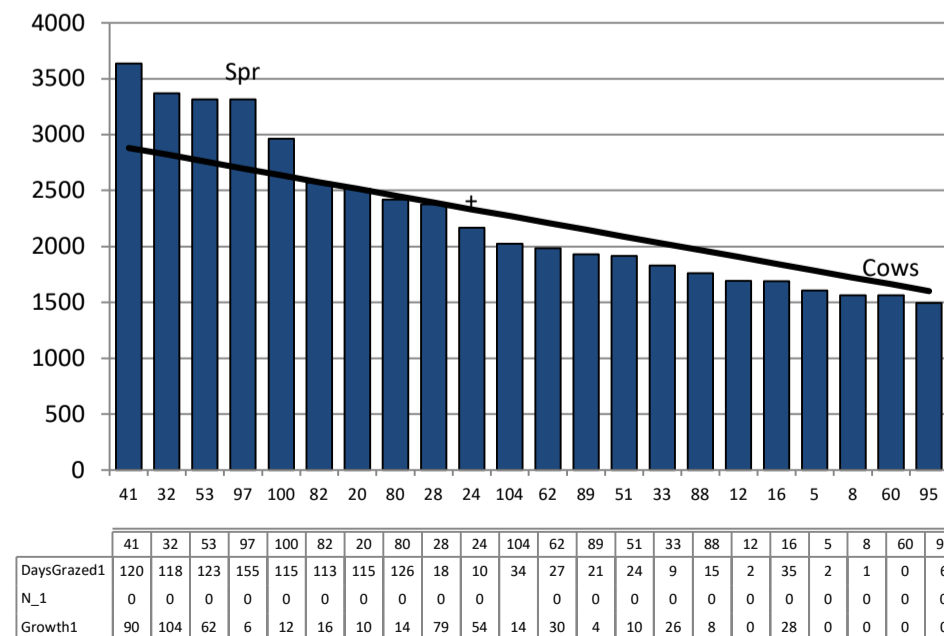
Standard Fodder Beet



Farmlet notes: Visual APC 2082; Visual GR 29; 84% calved; decrease rotation length to 31 d; start lifted FB feeding at 0.5 kg DM/cow/d & increase to 1.5 kg/cow by Mon; supplement baleage if still tight; merge springers with kale springers once current kale pdk finished; late dries to remain on FB & fed 10 kg FB & 3 kg baleage; apply 30 kg N/ha as ammo 31 when weather allows

| | | | |
|-----------------------------------|------|------------------------|------|
| Herd size (cows) | 140 | Average Cover | 2250 |
| Target residual (kg DM/ha) | 1600 | Average Growth | 33 |
| Target pasture intake (kg DM/cow) | 18.3 | Farmlet area | 63.5 |
| Target Area offered (ha/day) | 2 | Target rotation length | 32 |
| Last week rotation avg | 50 | Target demand | 40 |
| Last week supp (kg DM/cow) | 0.0 | YTD supp (kg DM/cow) | 0 |
| Last week N (kg N/ha) | 0 | Fert N YTD | 0 |
| Milk yield | 22.0 | Effluent N YTD | 0 |
| Fat% | N | Last wk MS | W |
| Prot% | E | YTD MS/cow | E |
| SCC | X | YTD MS/ha | E |
| Average BCS | T | % less than BCS 4.5 | K |

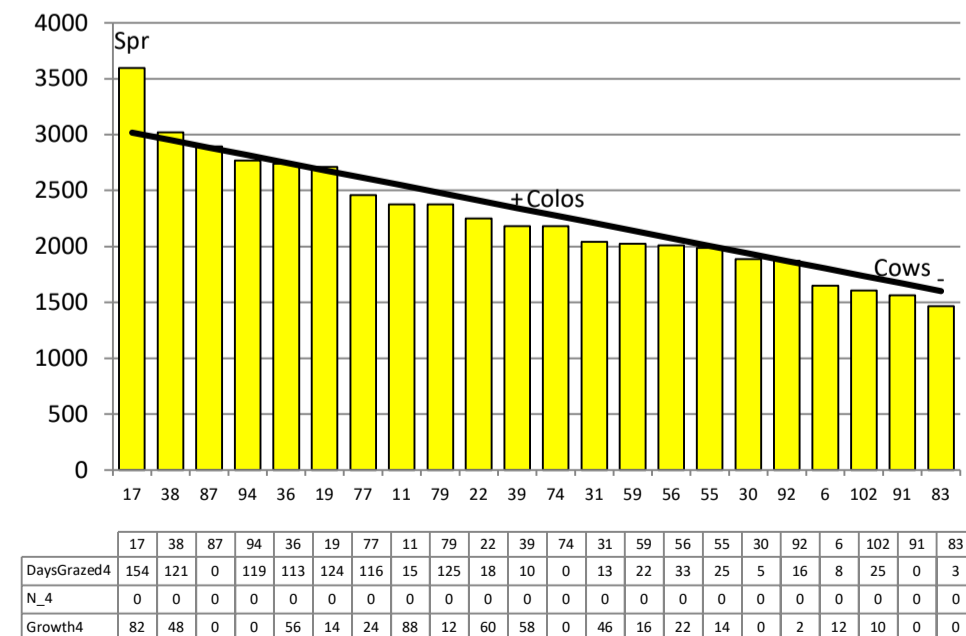
Low Impact Kale



Farmlet notes: Visual APC 2169; Visual GR 28; 80% calved; look to speed up rotation to 40 days as pdks allow; pdk 53 for colostrums; merge springers with FB springers once current pdk is finished; monitor residuals & continue with dry mob to clean up behind milkers; apply 20kg N/ha as ammonium sulphate to grazed pdks & 1st round >2000 kg DM when weather allows.

| | | | |
|-----------------------------------|------|------------------------|------|
| Herd size (cows) | 155 | Average Cover | 2256 |
| Target residual (kg DM/ha) | 1600 | Average Growth | 35 |
| Target pasture intake (kg DM/cow) | 18.3 | Farmlet area | 63.9 |
| Target Area offered (ha/day) | 2 | Target rotation length | 32 |
| Last week rotation avg | 42 | Target demand | 44 |
| Last week supp (kg DM/cow) | 0.0 | YTD supp (kg DM/cow) | 0 |
| Last week N (kg N/ha) | 0 | Fert N YTD | 0 |
| Milk yield | 21.7 | Effluent N YTD | 0 |
| Fat% | N | Last wk MS | W |
| Prot% | E | YTD MS/cow | E |
| SCC | X | YTD MS/ha | E |
| Average BCS | T | % less than BCS 4.5 | K |

Low Impact Fodder Beet



Farmlet notes: Visual APC 2185; Visual GR 33; 84% calved; decrease rotation length to 31 d as pre-graze covers allow; merge springers with kale springers once current kale pdk finished; late dries to remain on FB & fed 10 kg FB & 3 kg baleage; apply 20 kg N/ha as granulated ammonium sulphate to grazed pdks & first round pdks below 2000 kg DM/ha when weather allows