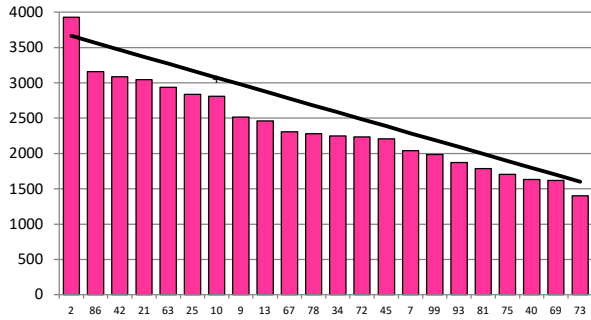


Date 02-09-20

Herd size (cows)	145	Average Cover	2391
Target residual (kg DM/ha)	1600	Average Growth	23
Target pasture intake (kg DM/cow)	17.8	Farmlet area	61.1
Target Area offered (ha/day)	1.25	Target rotation length	49
Last week actual rotation (d)	45	Target demand	42
Last week supp (kg DM/cow)	0.0	YTD supp (kg DM/cow)	0
Last week N (kg N/ha)	0	Fert N YTD	0
Milk yield (L/cow)	19.2	Effluent N YTD	0
Fat%	N	Last wk MS	W
Prot%	E	YTD MS/cow	E
SCC	X	YTD MS/ha	E
Average BCS	4.9	% less than BCS 4.5	1%

Standard Kale

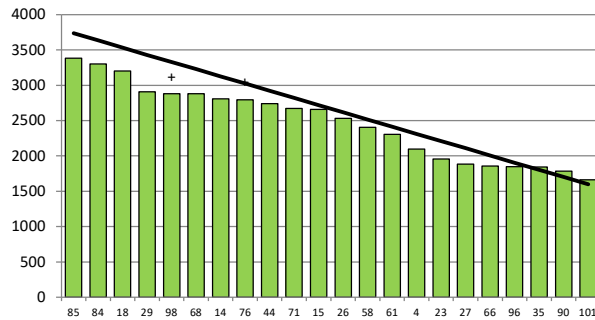


	2	86	42	21	63	25	10	9	13	67	78	34	72	45	7	99	93	81	75	40	69	73
DaysGrazed3	0	0	119	117	105	104	123	109	101	114	112	12	102	99	13	27	9	5	7	3	1	0
N_3	0	0	0	0	0	0	0	0	0	0	0	0	0	0	0	0	0	0	0	0	0	0
Growth3	0	0	69	50	24	20	18	32	10	6	20	-14	16	14	56	26	2	22	24	0	0	0

Farmlet notes: Visual APC 2330; Visual GR 23; 68% of herd calved; APC well above target so speeding up the milkers to drive higher DM intakes & will use late dries to clean up behind; aiming for 2 days per 2.9 ha pdk with no supplement; Late dries also finishing off PKE in trailer in a springer paddock with baleage; First round of metrichecks today with 10 cows treated.

Herd size (cows)	150	Average Cover	2476
Target residual (kg DM/ha)	1600	Average Growth	25
Target pasture intake (kg DM/cow)	17.8	Farmlet area	63.6
Target Area offered (ha/day)	1.25	Target rotation length	51
Last week actual rotation (d)	47	Target demand	42
Last week supp (kg DM/cow)	0.0	YTD supp (kg DM/cow)	0
Last week N (kg N/ha)	0	Fert N YTD	0
Milk yield (L/cow)	19.9	Effluent N YTD	0
Fat%	N	Last wk MS	W
Prot%	E	YTD MS/cow	E
SCC	X	YTD MS/ha	E
Average BCS	5.0	% less than BCS 4.5	1%

Standard Fodder Beet

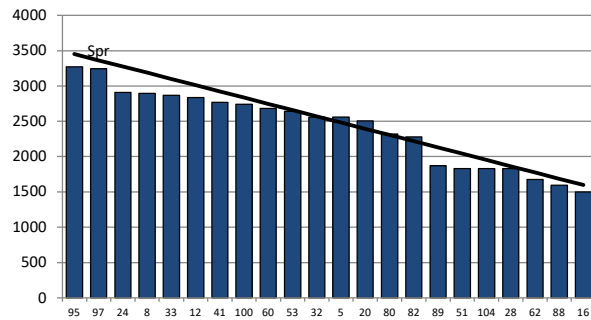


	85	84	18	29	98	68	14	76	44	71	15	26	58	61	4	23	27	66	96	35	90	101
DaysGrazed2	133	0	0	0	0	0	0	0	0	0	0	0	0	0	0	0	0	0	0	0	0	0
N_2	0	0	0	0	0	0	0	0	0	0	0	0	0	0	0	0	0	0	0	0	0	0
Growth2	60	0	32	22	40	40	54	26	8	28	0	19	6	14	6	0	44	28	7	6	0	13

Farmlet notes: Visual APC 2385; Visual GR 22; 69% of herd calved; APC well above target so speeding up milkers to drive higher DM intakes; aiming for 2 days/2.9 ha pdk with no suppl. but will monitor residuals as late dries are still on crop so not available to follow behind; 1st round of metrichecks today with 10 cows treated. Low blood P in cows coming off crop despite DCP suppl.

Herd size (cows)	130	Average Cover	2416
Target residual (kg DM/ha)	1600	Average Growth	26
Target pasture intake (kg DM/cow)	17.8	Farmlet area	63.5
Target Area offered (ha/day)	1.25	Target rotation length	51
Last week rotation avg	59	Target demand	36
Last week supp (kg DM/cow)	0.0	YTD supp (kg DM/cow)	0
Last week N (kg N/ha)	0	Fert N YTD	0
Milk yield	20.1	Effluent N YTD	0
Fat%	N	Last wk MS	W
Prot%	E	YTD MS/cow	E
SCC	X	YTD MS/ha	E
Average BCS	4.9	% less than BCS 4.5	2%

Low Impact Kale

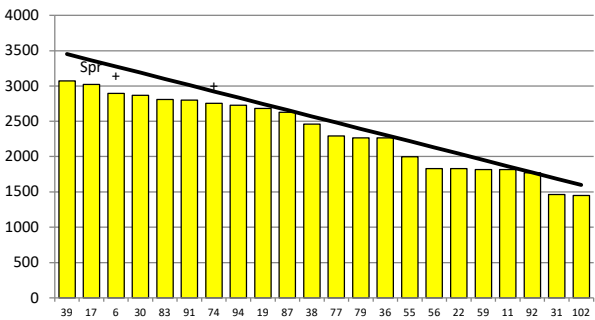


	95	97	24	8	33	12	41	100	60	53	32	5	20	80	82	89	51	104	28	62	88	16
DaysGrazed1	0	141	105	124	0	109	106	101	120	109	104	117	101	112	99	7	10	20	4	13	1	21
N_1	0	0	0	0	0	0	0	0	0	0	0	0	0	0	0	0	0	0	0	0	0	0
Growth1	0	58	22	53	0	20	43	40	26	55	23	10	8	3	22	25	20	22	0	8	0	1

Farmlet notes: Visual APC 2325; Visual GR 25; 68% of herd calved; APC well above target so speeding up the milkers to drive higher DM intakes & will use late dries to clean up behind; aiming for 2.5 days per 2.9 ha pdk with no supplement; Late dries also finishing off PKE in trailer in a springer paddock with baleage; First round of metrichecks today with 9 cows treated.

Herd size (cows)	130	Average Cover	2341
Target residual (kg DM/ha)	1600	Average Growth	28
Target pasture intake (kg DM/cow)	17.8	Farmlet area	63.9
Target Area offered (ha/day)	1.25	Target rotation length	51
Last week rotation avg	45	Target demand	36
Last week supp (kg DM/cow)	0.0	YTD supp (kg DM/cow)	0
Last week N (kg N/ha)	0	Fert N YTD	0
Milk yield	19.5	Effluent N YTD	0
Fat%	N	Last wk MS	W
Prot%	E	YTD MS/cow	E
SCC	X	YTD MS/ha	E
Average BCS	4.9	% less than BCS 4.5	0%

Low Impact Fodder Beet



	39	17	6	30	83	91	74	94	19	87	38	77	79	36	55	56	22	59	11	92	31	102
DaysGrazed4	119	140	115	128	131	121	109	105	110	113	107	102	111	99	11	19	4	8	1	2	0	11
N_4	0	0	0	0	0	0	0	0	0	0	0	0	0	0	0	0	0	0	0	0	0	0
Growth4	47	26	56	58	16	23	36	34	48	6	54	20	26	19	20	6	0	9	0	0	0	3

Farmlet notes: Visual APC 2286; Visual GR 24; 69% of herd calved; APC well above target so speeding up milkers to drive higher DM intakes; aiming for 2.5 days/2.9 ha pdk with no suppl.; will monitor residuals as late dries are still on crop so not available to clean up behind; 1st round of metrichecks today with 9 cows treated. Low blood P in cows coming off crop despite DCP suppl.