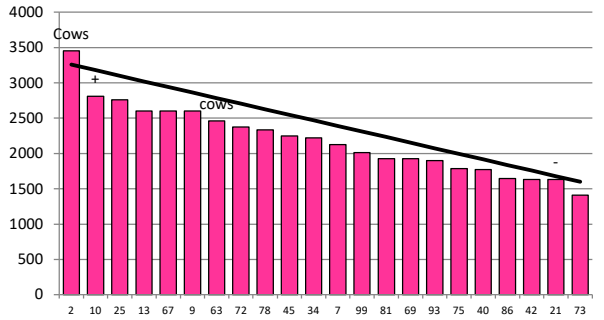


Date 09-09-20

Herd size (cows)	145	Average Cover	2208
Target residual (kg DM/ha)	1600	Average Growth	15
Target pasture intake (kg DM/cow)	18.3	Farmlet area	61.1
Target Area offered (ha/day)	1.6	Target rotation length	38
Last week actual rotation (d)	49	Target demand	43
Last week supp (kg DM/cow)	0.0	YTD supp (kg DM/cow)	0
Last week N (kg N/ha)	0	Fert N YTD	0
Milk yield (L/cow)	20.9	Effluent N YTD	0
Fat%	4.6	Last wk MS	1.9
Prot%	3.9	YTD MS/cow	59
SCC	316	YTD MS/ha	185
Average BCS	4.5	% less than BCS 4.5	16%

### Standard Kale

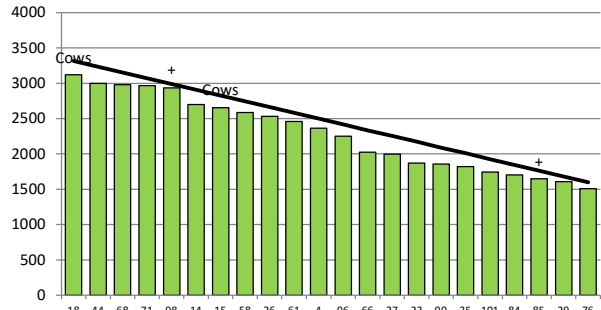


	2	10	25	13	67	9	63	72	78	45	34	7	99	81	69	93	75	40	86	42	21	73
DaysGrazed3	1	130	111	108	121	116	0	109	119	106	19	20	34	12	8	16	14	10	5	0	1	7
N_3	0	0	0	0	0	0	0	0	0	0	0	0	0	0	0	0	0	0	0	0	0	0
Growth3	0	0	5	20	42	12	0	20	8	6	2	12	4	20	44	4	12	20	0	0	0	1

Farmlet notes: Visual APC 2204; Visual GR 20; 79% calved; Struggling to hit residual with 4 feeds/pdk so using dries to tidy up; identified light BCS cows from BCS this week & started inshed feeding to them; Getting through the high pre-graze mass pdks & heading towards SRP targets; 55% of farm grazed so far; No N fertiliser as soil temps not consistently high enough.

Herd size (cows)	150	Average Cover	2291
Target residual (kg DM/ha)	1600	Average Growth	22
Target pasture intake (kg DM/cow)	18.3	Farmlet area	63.6
Target Area offered (ha/day)	1.6	Target rotation length	40
Last week actual rotation (d)	33	Target demand	43
Last week supp (kg DM/cow)	0.0	YTD supp (kg DM/cow)	0
Last week N (kg N/ha)	0	Fert N YTD	0
Milk yield (L/cow)	21.2	Effluent N YTD	0
Fat%	4.7	Last wk MS	2.1
Prot%	3.9	YTD MS/cow	67
SCC	200	YTD MS/ha	191
Average BCS	4.5	% less than BCS 4.5	8%

### Standard Fodder Beet

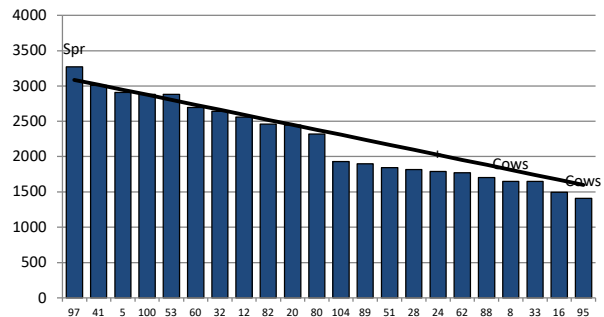


	18	44	68	71	98	14	15	58	26	61	4	96	66	27	23	90	35	101	84	85	29	76
DaysGrazed2	0	118	126	115	124	114	1	106	112	108	0	31	14	20	9	11	24	42	7	1	3	5
N_2	0	0	0	0	0	0	0	0	0	0	0	0	0	0	0	0	0	0	0	0	0	0
Growth2	0	37	14	42	8	14	0	26	0	22	38	57	24	16	5	10	1	12	0	0	0	0

Farmlet notes: Visual APC 2247; Visual GR 14; 79% calved; Struggling to hit residual with 4 feeds/pdk so milkers going back for a few hrs to tidy up; identified light BCS cows from BCS this week & put on OAD; Getting through the high pre-graze mass pdks & heading towards SRP targets; 58% of farm grazed so far; No N fertiliser as soil temps not consistently high enough.

Herd size (cows)	130	Average Cover	2223
Target residual (kg DM/ha)	1600	Average Growth	14
Target pasture intake (kg DM/cow)	18.3	Farmlet area	63.5
Target Area offered (ha/day)	1.6	Target rotation length	40
Last week rotation avg	39	Target demand	37
Last week supp (kg DM/cow)	0.0	YTD supp (kg DM/cow)	0
Last week N (kg N/ha)	0	Fert N YTD	0
Milk yield	21.4	Effluent N YTD	0
Fat%	4.7	Last wk MS	1.8
Prot%	3.8	YTD MS/cow	61
SCC	121	YTD MS/ha	165
Average BCS	4.6	% less than BCS 4.5	11%

### Low Impact Kale

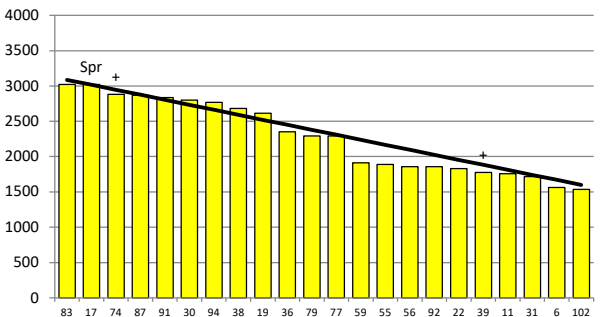


	97	41	5	100	53	60	32	12	82	20	80	104	89	51	28	24	62	88	8	33	16	95
DaysGrazed1	148	113	124	108	116	127	111	116	106	108	119	27	14	17	11	3	20	8	0	2	28	3
N_1	0	0	0	0	0	0	0	0	0	0	0	0	0	0	0	0	0	0	0	0	0	0
Growth1	4	34	50	20	34	2	12	8	26	0	3	14	4	2	1	0	14	16	0	0	1	0

Farmlet notes: Visual APC 2184; Visual GR 19; 76% calved; Cows doing OK on 2.5 days per paddock (55 d rotation); identified light BCS cows from BCS this week & started inshed feeding to them; Struggling to get through high pre-graze mass pdks but APC getting closer to SRP targets; 50% of farm grazed so far; No N fertiliser as soil temps not consistently high enough.

Herd size (cows)	130	Average Cover	2277
Target residual (kg DM/ha)	1600	Average Growth	13
Target pasture intake (kg DM/cow)	18.3	Farmlet area	63.9
Target Area offered (ha/day)	1.6	Target rotation length	40
Last week rotation avg	55	Target demand	37
Last week supp (kg DM/cow)	0.0	YTD supp (kg DM/cow)	0
Last week N (kg N/ha)	0	Fert N YTD	0
Milk yield	21.4	Effluent N YTD	0
Fat%	4.8	Last wk MS	2.1
Prot%	3.9	YTD MS/cow	68
SCC	212	YTD MS/ha	180
Average BCS	4.5	% less than BCS 4.5	7%

### Low Impact Fodder Beet



	83	17	74	87	91	30	94	38	19	36	79	77	59	55	56	92	22	39	11	31	6	102
DaysGrazed4	138	147	116	120	128	0	112	114	117	106	118	109	15	18	26	9	11	3	8	6	1	18
N_4	0	0	0	0	0	0	0	0	0	0	0	0	0	0	0	0	0	0	0	0	0	0
Growth4	30	0	18	34	6	0	6	32	1	12	4	0	14	1	4	12	0	0	3	0	0	12

Farmlet notes: Visual APC 2247; Visual GR 14; 80% calved; cows doing OK on 2.5 days per paddock (55 d rotation); identified light BCS cows from BCS this week & put on OAD milking; Struggling to get through high pre-graze mass pdks but APC is declining and closer to SRP target; 48% of farm grazed so far; No N fertiliser as soil temps not consistently high enough. Lates still on beet