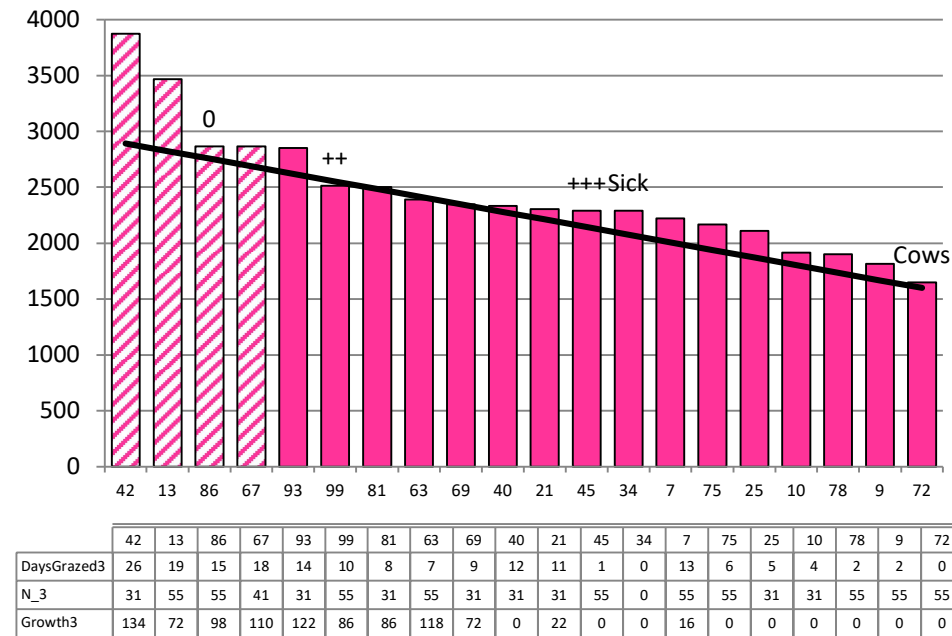


Date 18-11-20

Herd size (cows)	197	Average Cover	2438
Target residual (kg DM/ha)	1600	Average Growth	85
Target pasture intake (kg DM/cow)	19	Farmlet area	56.5
Target Area offered (ha/day)	2.9	Target rotation length	19
Last week actual rotation (d)	21	Target demand	66
Last week supp (kg DM/cow)	0.3	YTD supp (kg DM/cow)	268
Last week N (kg N/ha)	0	Fert N YTD	40
Milk yield (L/cow)	22.9	Effluent N YTD	0
Fat%	4.5	Last wk MS	1.9
Prot%	3.9	YTD MS/cow	188
SCC	154	YTD MS/ha	587
Average BCS	4.2	% less than BCS 4	6%

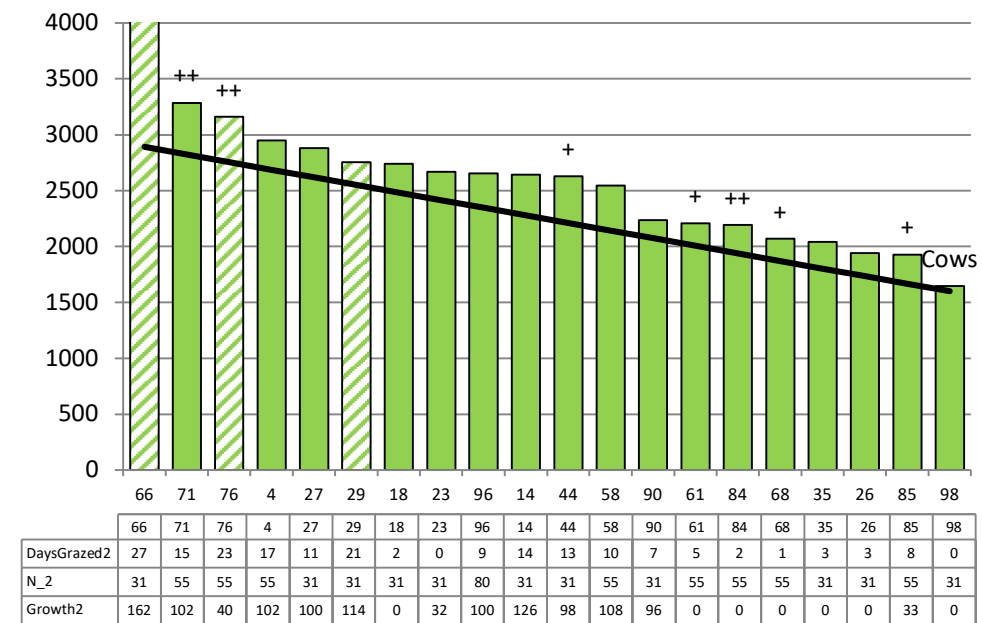
Herd size (cows)	197	Average Cover	2563
Target residual (kg DM/ha)	1600	Average Growth	93
Target pasture intake (kg DM/cow)	19	Farmlet area	57.8
Target Area offered (ha/day)	2.9	Target rotation length	20
Last week actual rotation (d)	23	Target demand	65
Last week supp (kg DM/cow)	0.0	YTD supp (kg DM/cow)	134
Last week N (kg N/ha)	0	Fert N YTD	37
Milk yield (L/cow)	21.9	Effluent N YTD	0
Fat%	4.9	Last wk MS	2.0
Prot%	4.0	YTD MS/cow	190
SCC	124	YTD MS/ha	543
Average BCS	4.2	% less than BCS 4	10%

Standard Kale



Farmlet notes: Visual APC 2379; Visual GR 84; Step over an additional pdk for baleage so cows achieve residual in 24 hrs & dont have to go back to clean up; Cut baleage as soon as weather allows; Kale pdks sprayed out & worked in preparation for planting; 88% submission rate in 20 days; all 2020 crop pdks now back in pasture; start of 3rd round of N application

Standard Fodder Beet

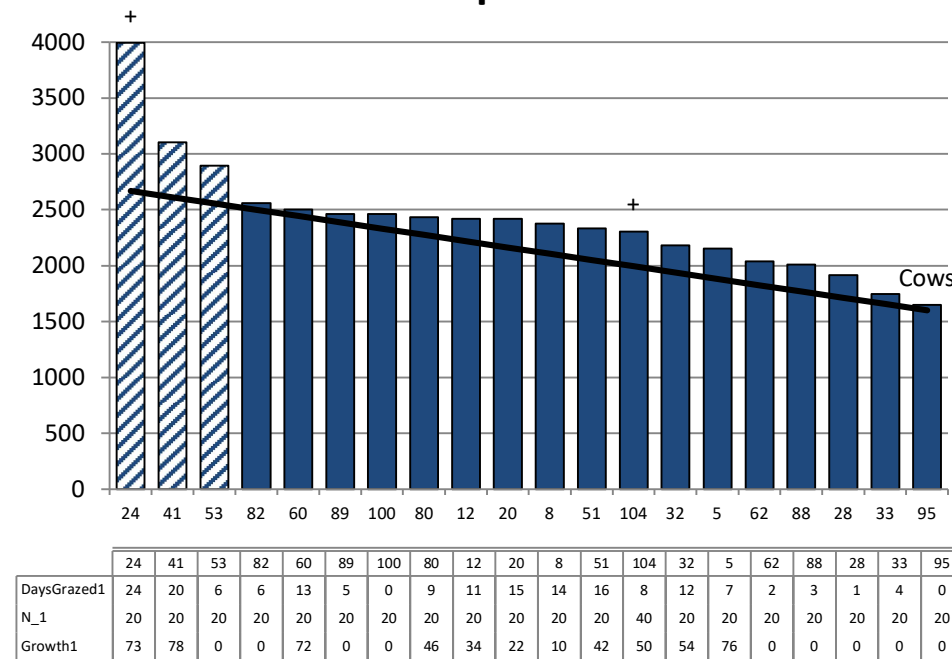


Farmlet notes: Visual APC 2437; Visual GR 91; Step over an additional pdk for baleage so cows achieve residual in 24 hrs & dont have to go back to clean up; Cut baleage as soon as weather allows; FB pdks sprayed out, worked and planting has commenced; 81% submission rate in 20 days; all 2020 crop pdks now back in pasture; start of 3rd round of N application

Herd size (cows)	163	Average Cover	2393
Target residual (kg DM/ha)	1600	Average Growth	51
Target pasture intake (kg DM/cow)	19	Farmlet area	57.7
Target Area offered (ha/day)	2.9	Target rotation length	20
Last week rotation avg	20	Target demand	54
Last week supp (kg DM/cow)	0.4	YTD supp (kg DM/cow)	36
Last week N (kg N/ha)	0	Fert N YTD	19
Milk yield	23.3	Effluent N YTD	0
Fat%	4.8	Last wk MS	2.1
Prot%	4.0	YTD MS/cow	190
SCC	171	YTD MS/ha	517
Average BCS	4.2	% less than BCS 4	7%

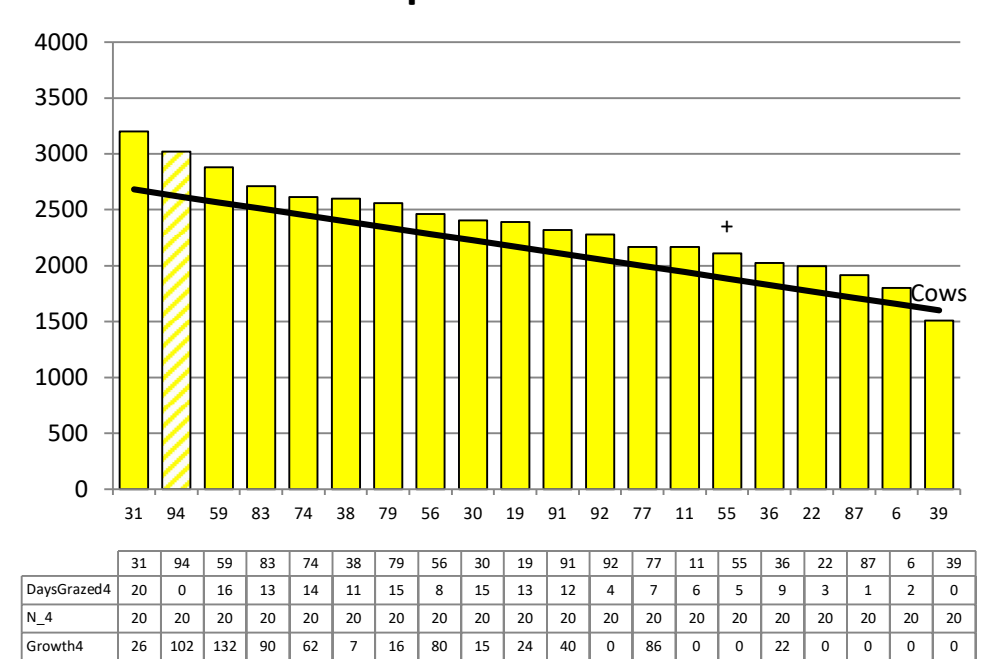
Herd size (cows)	165	Average Cover	2356
Target residual (kg DM/ha)	1600	Average Growth	54
Target pasture intake (kg DM/cow)	19	Farmlet area	58.1
Target Area offered (ha/day)	2.9	Target rotation length	20
Last week rotation avg	20	Target demand	54
Last week supp (kg DM/cow)	0.2	YTD supp (kg DM/cow)	73
Last week N (kg N/ha)	0	Fert N YTD	19
Milk yield	21.4	Effluent N YTD	0
Fat%	4.9	Last wk MS	2.0
Prot%	3.9	YTD MS/cow	196
SCC	125	YTD MS/ha	517
Average BCS	4.2	% less than BCS 4	7%

Low Impact Kale



Farmlet notes: Visual APC 2410; Visual GR 84; Step over an additional pdk for baleage so cows achieve residual in 24 hrs & dont have to go back to clean up; Cut baleage as soon as weather allows; Kale pdks sprayed out & worked in preparation for planting; 89% submission rate in 20 days; all 2020 crop pdks now back in pasture; topping as required for qual control

Low Impact Fodder Beet



Farmlet notes: Visual APC 2339; Visual GR 87; Pdk really struggling with seedhead emergence & milk production is suffering; Topping pdks to control qual but regrowth lacks density and leaf; residuals creeping up so available pasture is tight; First beet pdks planted this week; 91% submission rate in 20 days; all 2020 crop pdks now back in pasture;