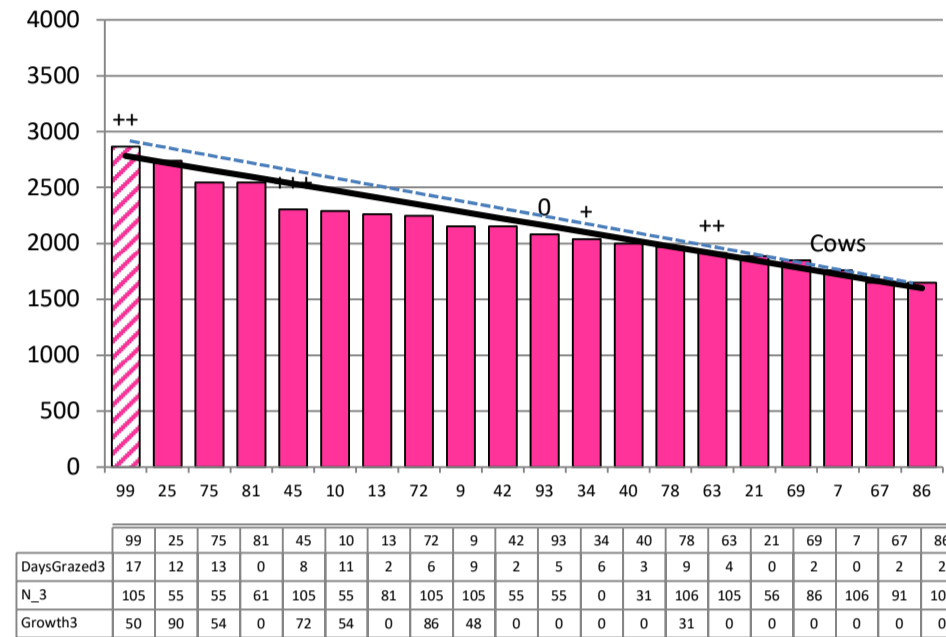


Date 25-11-20

Herd size (cows)	196	Average Cover	2148
Target residual (kg DM/ha)	1600	Average Growth	61
Target pasture intake (kg DM/cow)	17.5	Farmlet area	56.5
Target Area offered (ha/day)	2.9	Target rotation length	19
Last week actual rotation (d)	20	Target demand	61
Last week supp (kg DM/cow)	0.5	YTD supp (kg DM/cow)	275
Last week N (kg N/ha)	0	Fert N YTD	72
Milk yield (L/cow)	21.3	Effluent N YTD	0
Fat%	N	Last wk MS	W
Prot%	E	YTD MS/cow	E
SCC	X	YTD MS/ha	E
Average BCS	T	% less than BCS 4	K

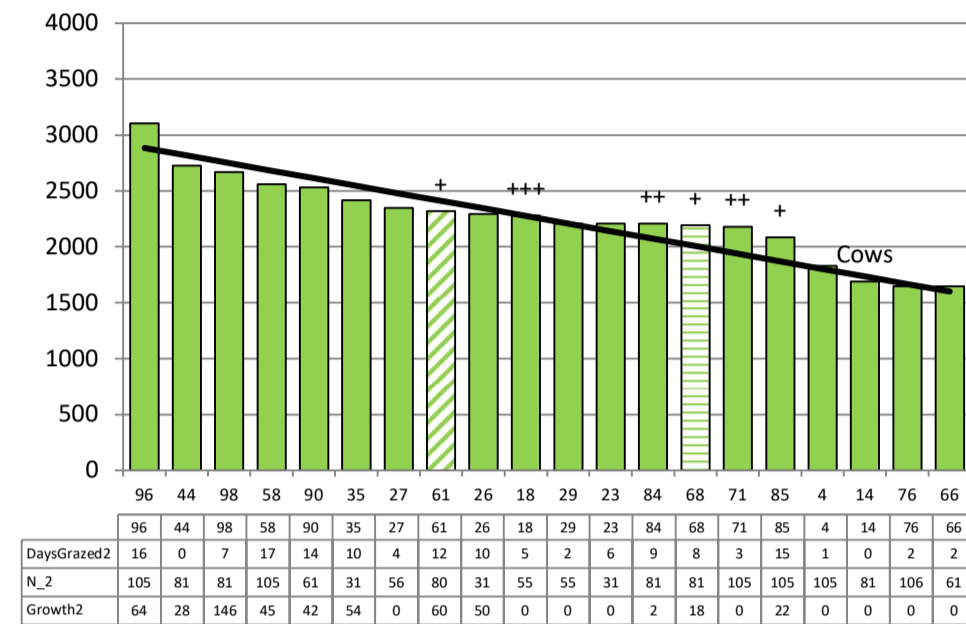
### Standard Kale



Farmlet notes: Visual APC 2020; Visual GR N/A; Started inshed feeding at 1.5 kg/cow/d plus baleage in pdk as required to prevent overgrazing as deficit emerging in wedge after pdk 81; 3rd round of N fertiliser being applied along with capital P & 0.5 T lime/ha; 6% of cows have not been mated; no pdks topped this week; 11.6 ha baled making 67 bales

Herd size (cows)	196	Average Cover	2256
Target residual (kg DM/ha)	1600	Average Growth	48
Target pasture intake (kg DM/cow)	19	Farmlet area	57.8
Target Area offered (ha/day)	2.9	Target rotation length	20
Last week actual rotation (d)	23	Target demand	64
Last week supp (kg DM/cow)	0.6	YTD supp (kg DM/cow)	139
Last week N (kg N/ha)	0	Fert N YTD	65
Milk yield (L/cow)	21.3	Effluent N YTD	0
Fat%	N	Last wk MS	W
Prot%	E	YTD MS/cow	E
SCC	X	YTD MS/ha	E
Average BCS	T	% less than BCS 4	K

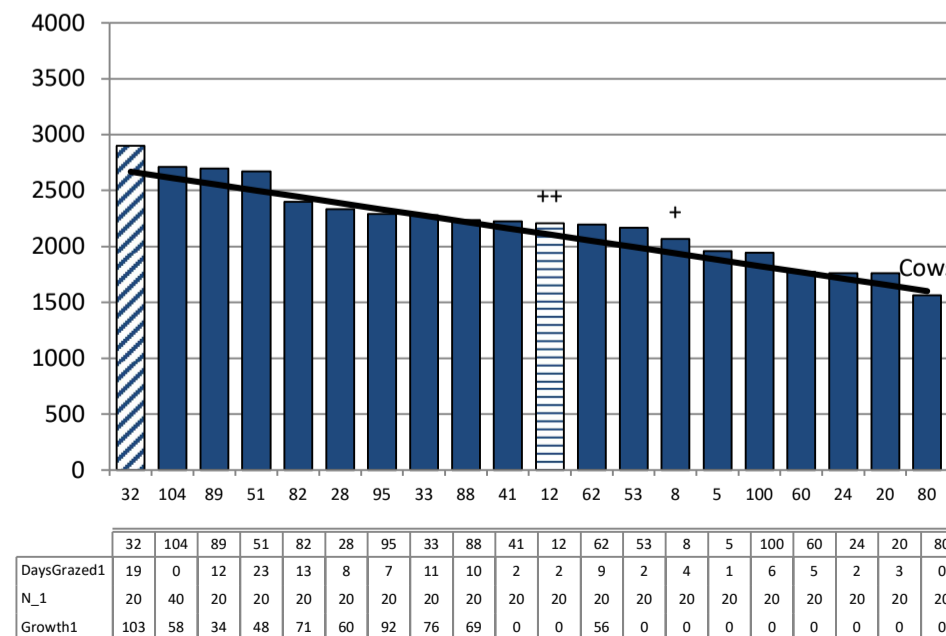
### Standard Fodder Beet



Farmlet notes: Visual APC 2059; Visual GR NA; 3rd round of N fertiliser being applied along with capital P and 0.5 T lime/ha; checking the 16% of cows who hadnt cycled at the end of the week & developing a plan for them; x1 pdk topped ; x3 pdks made into baleage netting 49 bales; no supplement fed this week; baleage as required going forward if short

Herd size (cows)	163	Average Cover	2208
Target residual (kg DM/ha)	1600	Average Growth	67
Target pasture intake (kg DM/cow)	19	Farmlet area	57.7
Target Area offered (ha/day)	2.9	Target rotation length	20
Last week rotation avg	20	Target demand	54
Last week supp (kg DM/cow)	0.7	YTD supp (kg DM/cow)	45
Last week N (kg N/ha)	0	Fert N YTD	19
Milk yield	21.5	Effluent N YTD	0
Fat%	N	Last wk MS	W
Prot%	E	YTD MS/cow	E
SCC	X	YTD MS/ha	E
Average BCS	T	% less than BCS 4	K

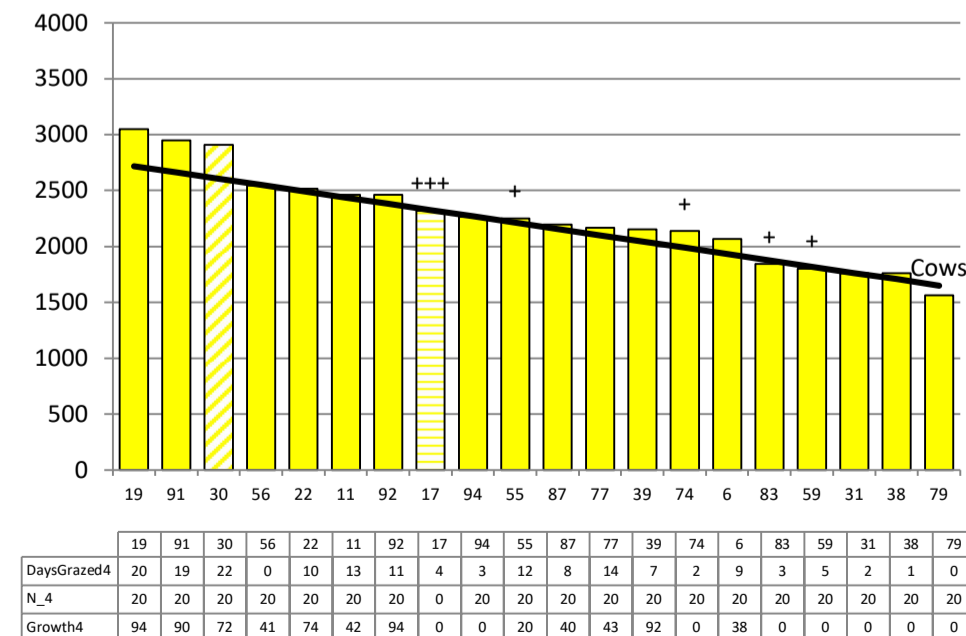
### Low Impact Kale



Farmlet notes: Visual APC 2003; Visual GR N/A; Skipped pdk 32 & 82 for baleage now; earmarked 12 for clean up in next round; Capital P and lime currently being applied across the farm; baleage fed in x1 pdk this week; 55 bales conserved from 3 pdks harvested; No pdks topped this week; 5% of cows not mated at the end of the week;

Herd size (cows)	163	Average Cover	2258
Target residual (kg DM/ha)	1650	Average Growth	62
Target pasture intake (kg DM/cow)	19	Farmlet area	58.0
Target Area offered (ha/day)	2.9	Target rotation length	20
Last week rotation avg	20	Target demand	53
Last week supp (kg DM/cow)	0.5	YTD supp (kg DM/cow)	79
Last week N (kg N/ha)	0	Fert N YTD	19
Milk yield	20.4	Effluent N YTD	0
Fat%	N	Last wk MS	W
Prot%	E	YTD MS/cow	E
SCC	X	YTD MS/ha	E
Average BCS	T	% less than BCS 4	K

### Low Impact Fodder Beet



Farmlet notes: Visual APC 2114; Visual GR N/A; Skipped pdk 30 for baleage; earmarked 17 for next time to clean up before spraying out and regrassing; no pdks topped this week; 2.9 ha conserved as baleage netting 16 bales; 4% of the herd have not been mated yet; Grazing pdks 19 and 91 over 3 days with 3 grazings per pdk to hold rotation otherwise too fast