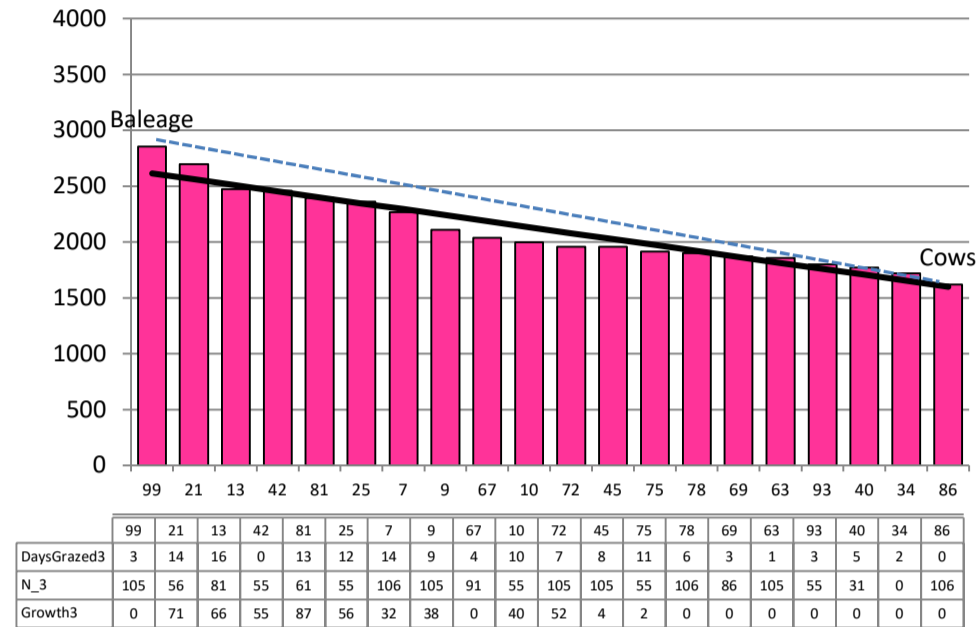


Date 09-12-20

Herd size (cows)	196	Average Cover	2112
Target residual (kg DM/ha)	1600	Average Growth	46
Target pasture intake (kg DM/cow)	15	Farmlet area	56.5
Target Area offered (ha/day)	2.9	Target rotation length	19
Last week actual rotation (d)	18	Target demand	52
Last week supp (kg DM/cow)	4.0	YTD supp (kg DM/cow)	324
Last week N (kg N/ha)	0	Fert N YTD	72
Milk yield (L/cow)	19.7	Effluent N YTD	0
Fat%	N	Last wk MS	W
Prot%	E	YTD MS/cow	E
SCC	X	YTD MS/ha	E
Average BCS	T	% less than BCS 4	K

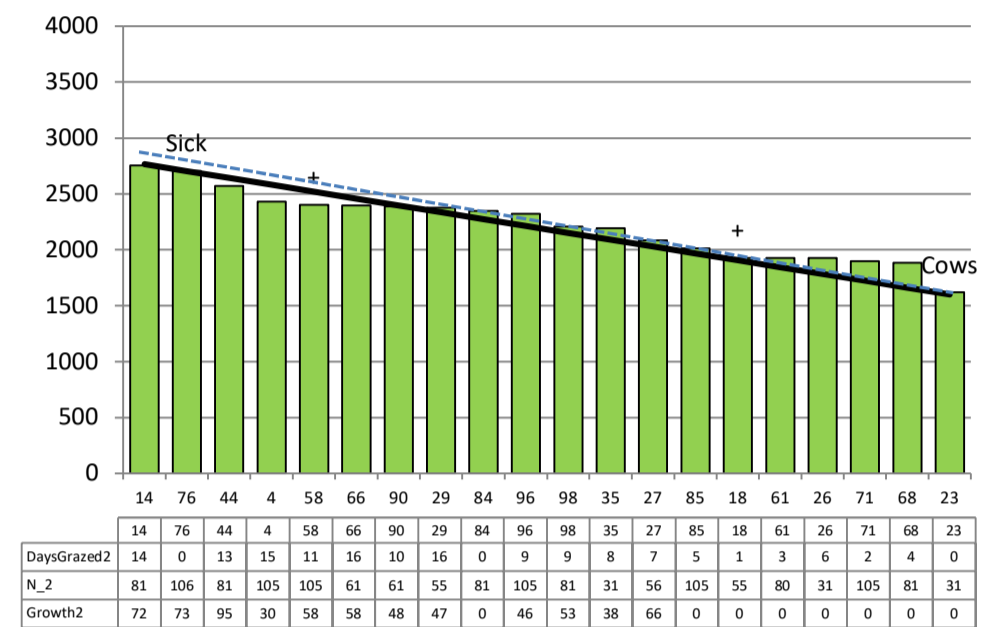
Standard Kale



Farmlet notes: Visual APC 2068; Visual GR 63; Increase inshed feeding to 3.5 kg DM/cow/d to reduce baleage; continue with N fertiliser after grazing; graze remainder of pdk 99 - pregraze mow; bulls out with cows, touch up tail paint every Mon morning; x2 pdks sprayed for thistles; slug bait going into direct drilled kale pdks; x1 cow not mated yet; capital K fert

Herd size (cows)	193	Average Cover	2218
Target residual (kg DM/ha)	1600	Average Growth	57
Target pasture intake (kg DM/cow)	17.5	Farmlet area	57.8
Target Area offered (ha/day)	2.9	Target rotation length	20
Last week actual rotation (d)	19	Target demand	58
Last week supp (kg DM/cow)	1.5	YTD supp (kg DM/cow)	155
Last week N (kg N/ha)	0	Fert N YTD	65
Milk yield (L/cow)	19.6	Effluent N YTD	0
Fat%	N	Last wk MS	W
Prot%	E	YTD MS/cow	E
SCC	X	YTD MS/ha	E
Average BCS	T	% less than BCS 4	K

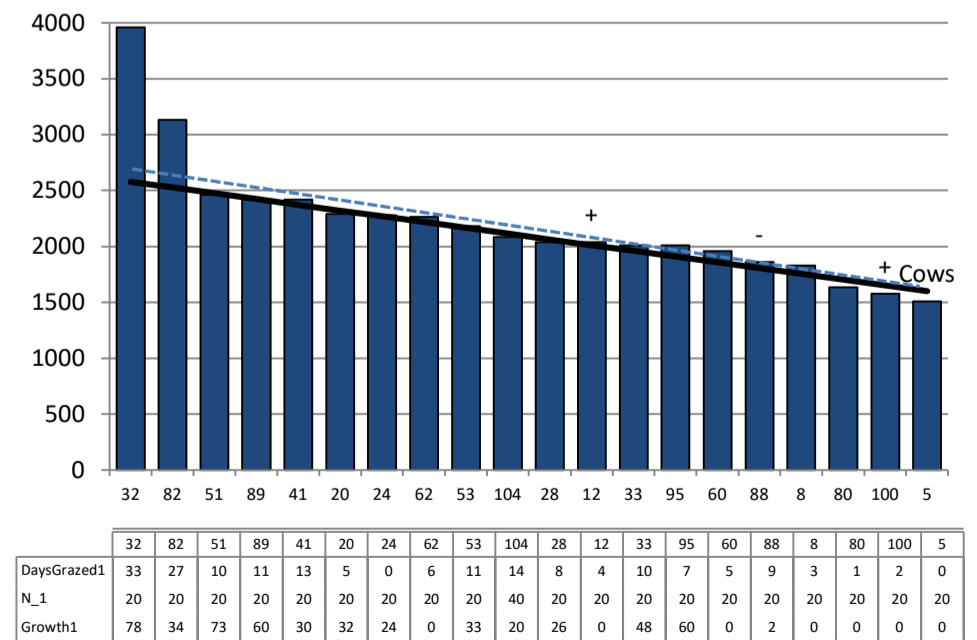
Standard Fodder Beet



Farmlet notes: Visual APC 2161; Visual GR 50; 1-2 kg DM baleage/d required to meet feed demand; continue with N fertiliser after grazing; bulls out with herd, record mated cows every Mon morning; x7 cows not mated yet; last cidrs out today; x1 pdk sprayed for thistles; lameness still an issue; x5 light BCS cows onto OAD and x1 back to TAD; capital K fert

Herd size (cows)	162	Average Cover	2199
Target residual (kg DM/ha)	1600	Average Growth	40
Target pasture intake (kg DM/cow)	17.5	Farmlet area	57.7
Target Area offered (ha/day)	2.9	Target rotation length	20
Last week rotation avg	20	Target demand	49
Last week supp (kg DM/cow)	3.1	YTD supp (kg DM/cow)	73
Last week N (kg N/ha)	0	Fert N YTD	19
Milk yield	19.9	Effluent N YTD	0
Fat%	N	Last wk MS	W
Prot%	E	YTD MS/cow	E
SCC	X	YTD MS/ha	E
Average BCS	T	% less than BCS 4	K

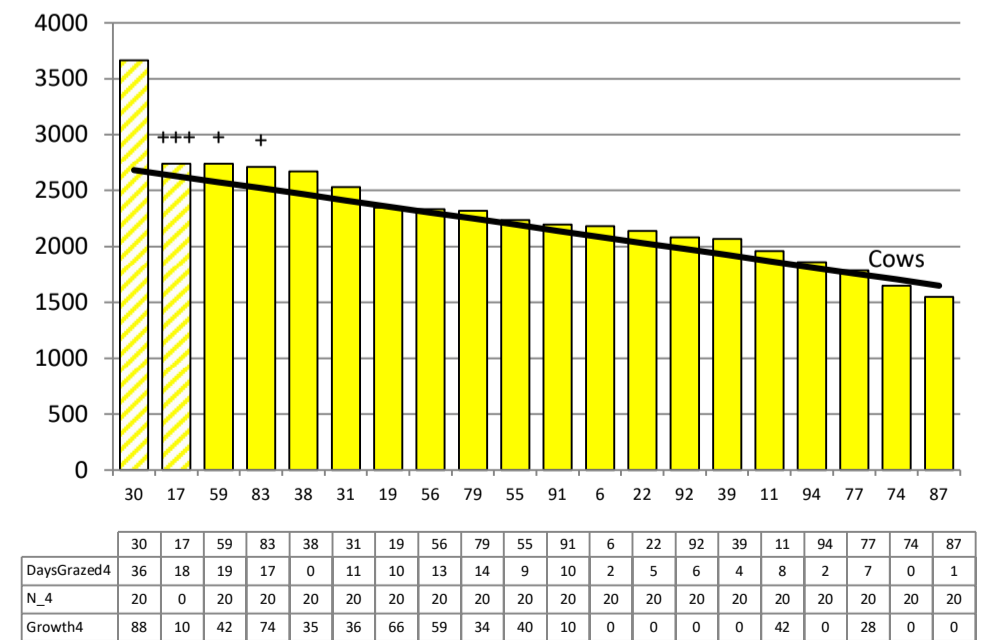
Low Impact Kale



Farmlet notes: Visual APC 2114; Visual GR 46; Bring pdks 32 and 82 back into grazing round to give next pdks a few more days before grazing; pre graze mow; inshed feed at 1 kg DM/cow/d but if more than 1 bale/d reqd will increase to 2 kg; x2 cows not mated yet, CIDR's out today; cont with 15kg N/ha after gazing in pdks left to do; capital K fert; slug bait on crop

Herd size (cows)	162	Average Cover	2288
Target residual (kg DM/ha)	1650	Average Growth	43
Target pasture intake (kg DM/cow)	18.5	Farmlet area	58.0
Target Area offered (ha/day)	2.9	Target rotation length	20
Last week rotation avg	23	Target demand	52
Last week supp (kg DM/cow)	1.1	YTD supp (kg DM/cow)	90
Last week N (kg N/ha)	0	Fert N YTD	19
Milk yield	19.7	Effluent N YTD	0
Fat%	N	Last wk MS	W
Prot%	E	YTD MS/cow	E
SCC	X	YTD MS/ha	E
Average BCS	T	% less than BCS 4	K

Low Impact Fodder Beet



Farmlet notes: Visual APC 2240; Visual GR 55; Bring Pdk 59 back into grazing round but conserve 30 & 17; 1 bale baleage/d likely from Mon next week; x1 cow not mated yet; bulls out in the herd and tail paint being assessed each Mon am for pregnancy dating; continue with 15 kg N/ha after grazing in remaining pdks; capital K fert starting