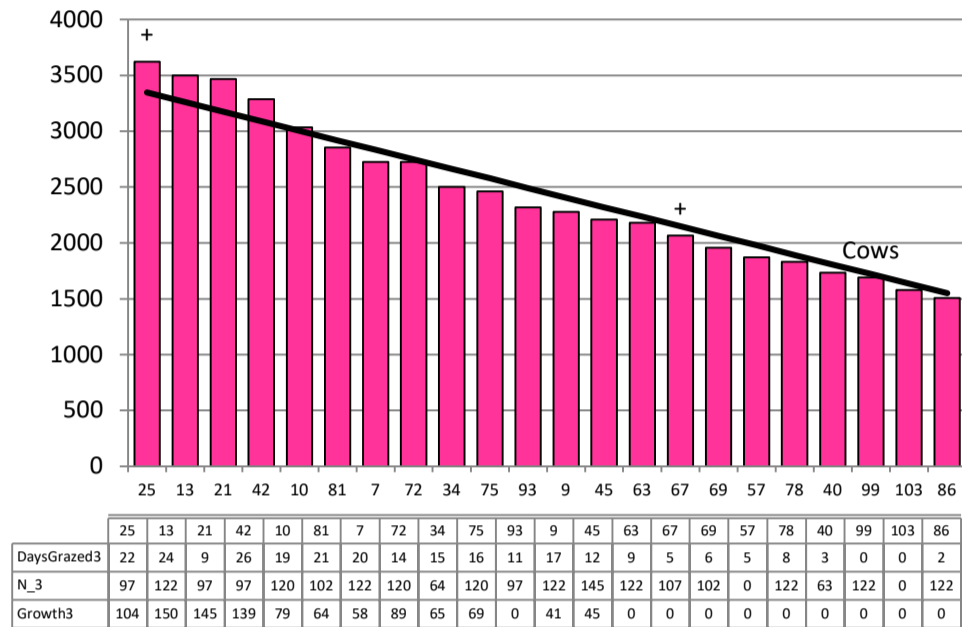


Date 05-01-21

Herd size (cows)	195	Average Cover	2425
Target residual (kg DM/ha)	1550	Average Growth	87
Target pasture intake (kg DM/cow)	17.5	Farmlet area	62.3
Target Area offered (ha/day)	1.9	Target rotation length	33
Last week actual rotation (d)	34	Target demand	55
Last week supp (kg DM/cow)	2.2	YTD supp (kg DM/cow)	456
Last week N (kg N/ha)	0	Fert N YTD	101
Milk yield (L/cow)	#REF!	Effluent N YTD	0
Fat%	N	Last wk MS	W
Prot%	E	YTD MS/cow	E
SCC	X	YTD MS/ha	E
Average BCS	4.1	% less than BCS 4	23%

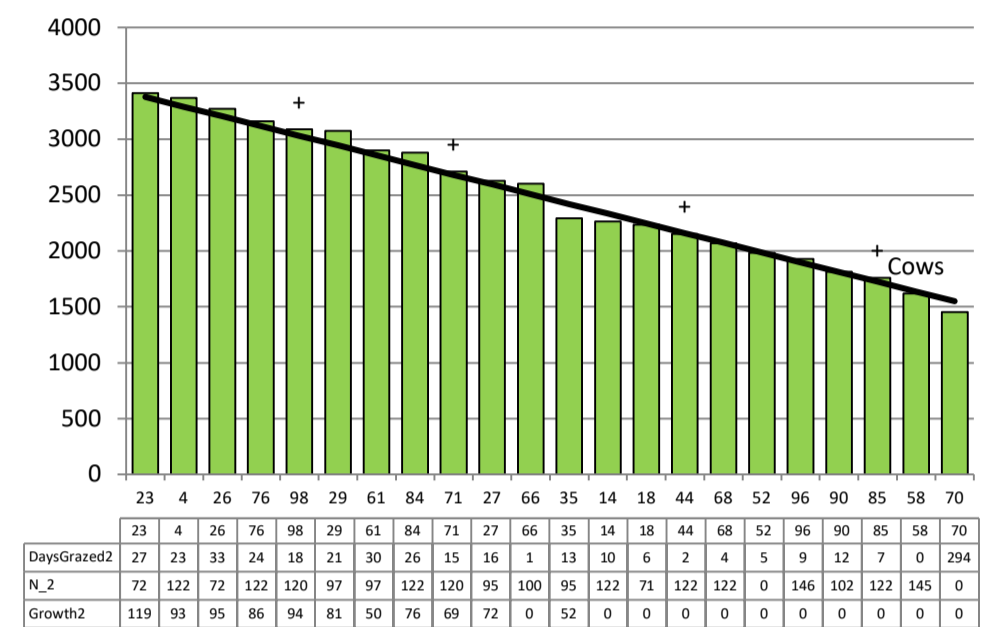
Herd size (cows)	193	Average Cover	2488
Target residual (kg DM/ha)	1550	Average Growth	81
Target pasture intake (kg DM/cow)	18	Farmlet area	63.5
Target Area offered (ha/day)	1.9	Target rotation length	33
Last week actual rotation (d)	31	Target demand	55
Last week supp (kg DM/cow)	1.0	YTD supp (kg DM/cow)	245
Last week N (kg N/ha)	0	Fert N YTD	95
Milk yield (L/cow)	#REF!	Effluent N YTD	0
Fat%	N	Last wk MS	W
Prot%	E	YTD MS/cow	E
SCC	X	YTD MS/ha	E
Average BCS	4.0	% less than BCS 4	26%

### Standard Kale



Farmlet notes: Visual APC 2435; Visual GR 63; Step over pdks 25, 13 & 21 for conservation; Revisit OAD & priority feeding group based on BCS assessment yesterday; continue to top pdks as required; take bulls out from herd on 12th Jan; New grass pdks to have second grazing late next week then likely topped after; Ongoing crop weed & pest spraying

### Standard Fodder Beet

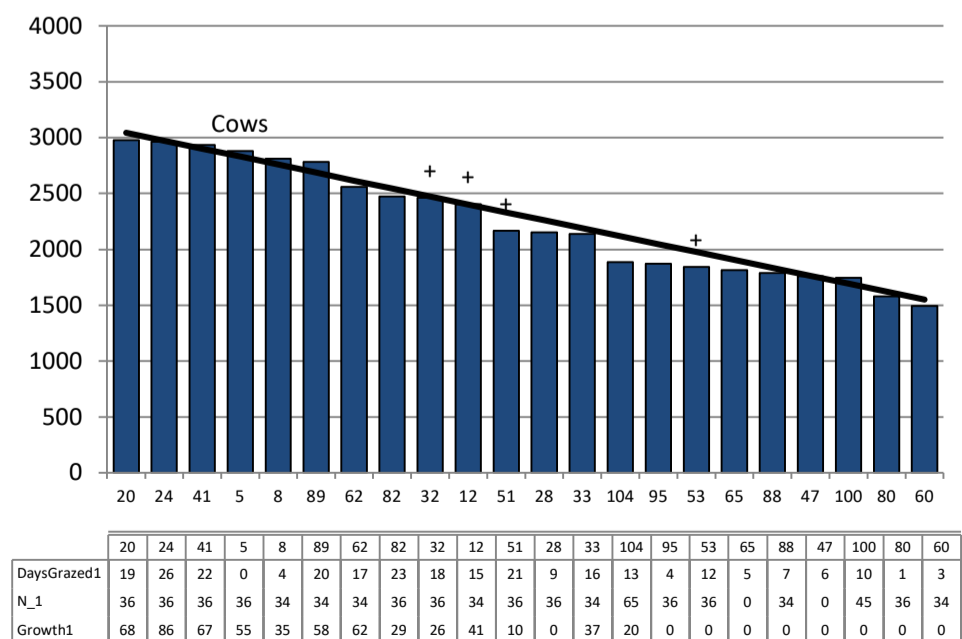


Farmlet notes: Visual APC 2419; Visual GR 56; Step over pdks 23, 4 & 26 for conservation; pdk 4 to be sprayed pre-mowing then regressed after cut; Revisit OAD milking group based on BCS from yesterday; bulls out on the 12th Jan; 1st new grass pdks to have 2nd graze late next week & topped to control weeds; monitor fodder beet for weed & pest spraying;

Herd size (cows)	162	Average Cover	2253
Target residual (kg DM/ha)	1550	Average Growth	46
Target pasture intake (kg DM/cow)	17.5	Farmlet area	63.5
Target Area offered (ha/day)	1.9	Target rotation length	33
Last week rotation avg	36	Target demand	45
Last week supp (kg DM/cow)	0.8	YTD supp (kg DM/cow)	167
Last week N (kg N/ha)	0	Fert N YTD	34
Milk yield	#REF!	Effluent N YTD	0
Fat%	N	Last wk MS	W
Prot%	E	YTD MS/cow	E
SCC	X	YTD MS/ha	E
Average BCS	4.1	% less than BCS 4	15%

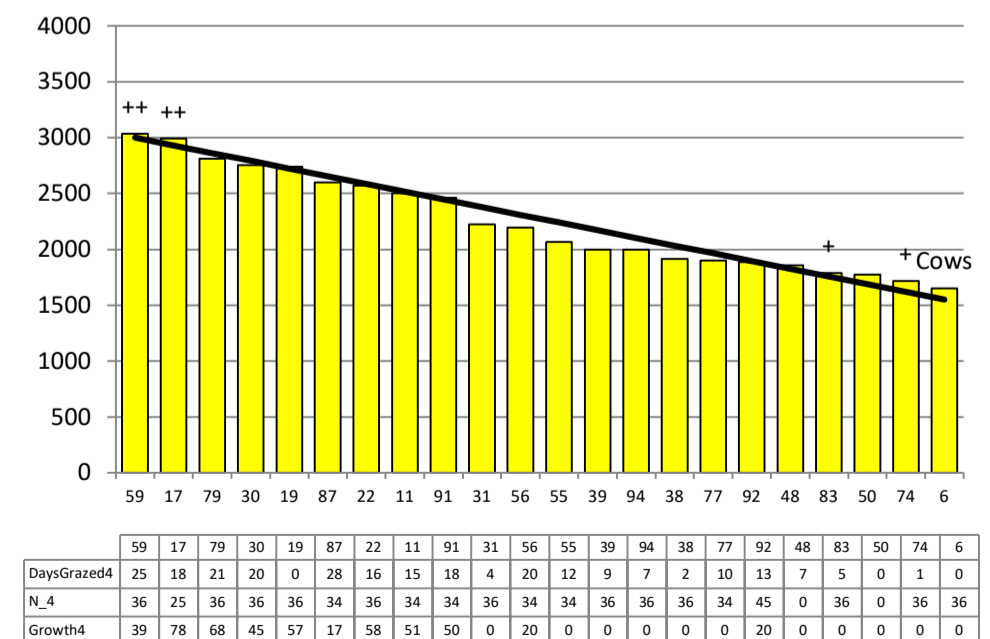
Herd size (cows)	162	Average Cover	2247
Target residual (kg DM/ha)	1550	Average Growth	46
Target pasture intake (kg DM/cow)	17	Farmlet area	63.8
Target Area offered (ha/day)	1.9	Target rotation length	34
Last week rotation avg	38	Target demand	43
Last week supp (kg DM/cow)	0.9	YTD supp (kg DM/cow)	163
Last week N (kg N/ha)	0	Fert N YTD	34
Milk yield	#REF!	Effluent N YTD	0
Fat%	N	Last wk MS	W
Prot%	E	YTD MS/cow	E
SCC	X	YTD MS/ha	E
Average BCS	4.1	% less than BCS 4	15%

### Low Impact Kale



Farmlet notes: Visual APC 2273; Visual GR 43; Step over pdk 20 for conservation; reassess cows for OAD milking and priority feeding after BCS assessment yesterday; record bull matings from the last week; bulls out on the 12th Jan; 1st new grass pdks nipped off last week to be regrazed at the end of next week; Monitor kale for weeds & pests

### Low Impact Fodder Beet



Farmlet notes: Visual APC 2235; Visual GR 40; Step over pdks 59 & 17 for conservation; pdk 17 to be sprayed before mowing & then regressed after conservation; Reassess cows for OAD milking based on latest BCS; record bull matings from the last week; bulls out on 12th Jan; 1st new grass pdks nipped off last week to be regrazed next week; monitor FB