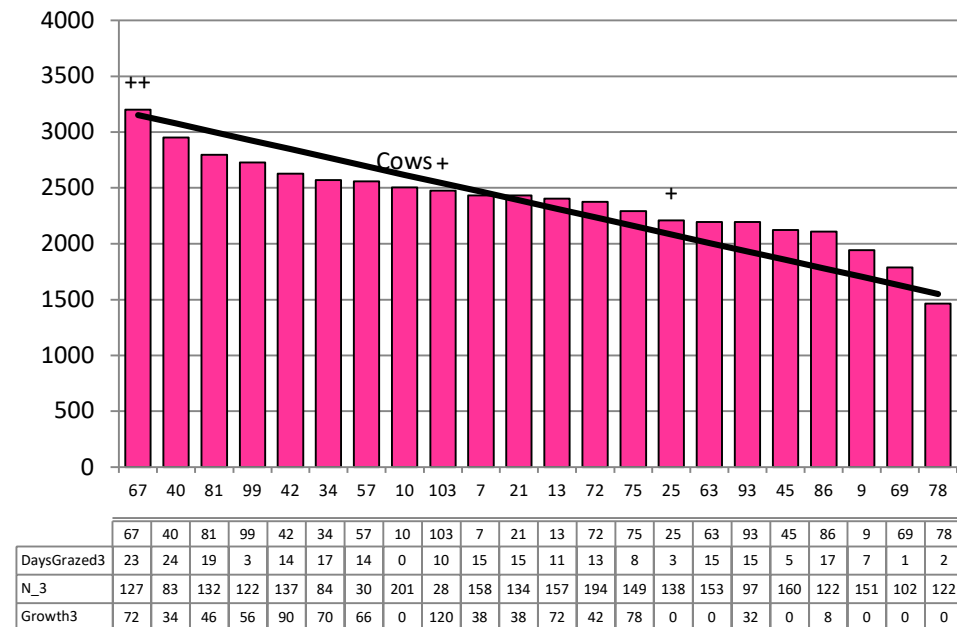


Date 17-02-21

Herd size (cows)	195	Average Cover	2376
Target residual (kg DM/ha)	1550	Average Growth	57
Target pasture intake (kg DM/cow)	15.6	Farmlet area	62.3
Target Area offered (ha/day)	1.9	Target rotation length	33
Last week actual rotation (d)	34	Target demand	49
Last week supp (kg DM/cow)	1.4	YTD supp (kg DM/cow)	520
Last week N (kg N/ha)	0	Fert N YTD	131
Milk yield (L/cow)	17.8	Effluent N YTD	10
Fat%	N	Last wk MS	W
Prot%	E	YTD MS/cow	E
SCC	X	YTD MS/ha	E
Average BCS	3.9	% less than BCS 4	28%

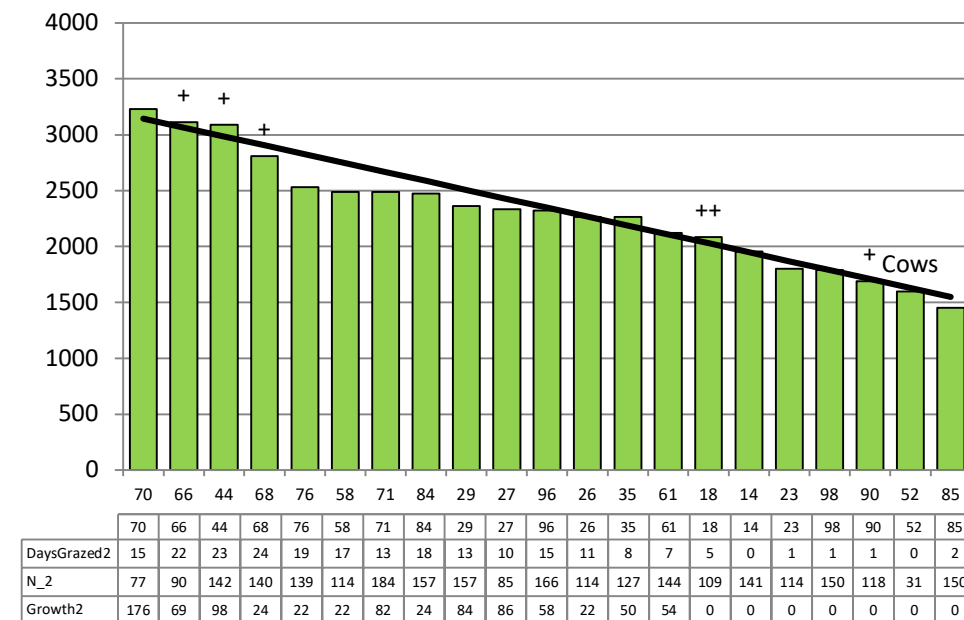
Herd size (cows)	193	Average Cover	2295
Target residual (kg DM/ha)	1550	Average Growth	62
Target pasture intake (kg DM/cow)	15.7	Farmlet area	60.6
Target Area offered (ha/day)	1.9	Target rotation length	32
Last week actual rotation (d)	32	Target demand	50
Last week supp (kg DM/cow)	1.3	YTD supp (kg DM/cow)	296
Last week N (kg N/ha)	0	Fert N YTD	121
Milk yield (L/cow)	17.4	Effluent N YTD	6
Fat%	N	Last wk MS	W
Prot%	E	YTD MS/cow	E
SCC	X	YTD MS/ha	E
Average BCS	3.9	% less than BCS 4	34%

Standard Kale



Farmlet notes: Visual APC 2319; Visual GR 52; growth just above demand again this week; possible deficit in wedge emerging so monitoring closely; reassessed low BCS animals relative to expected calving date & BCS data; culls booked in for early Mar & April so list being compiled; continuing with N fertiliser to complete this round at 25 kg N/ha

Standard Fodder Beet

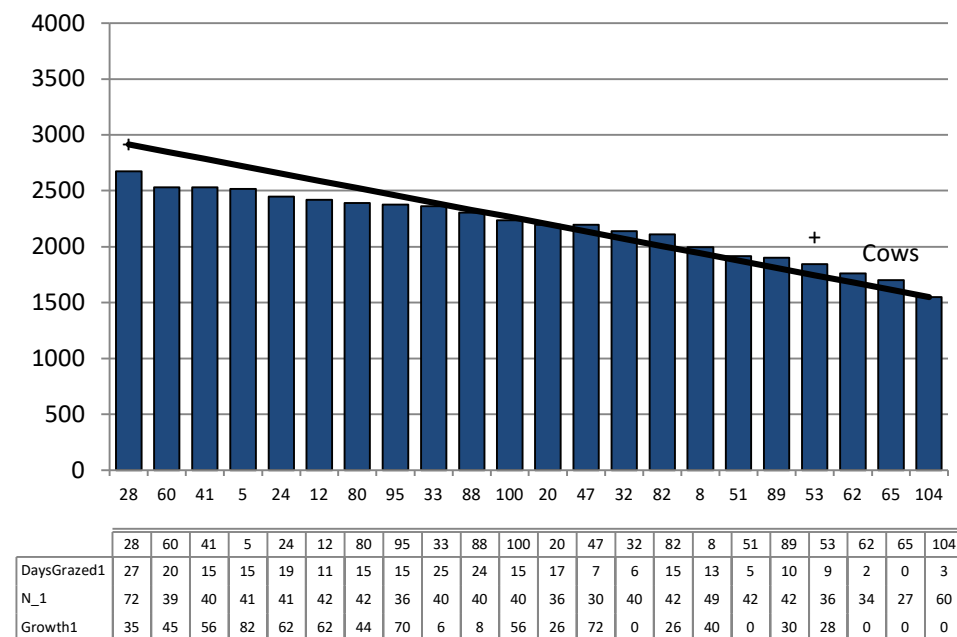


Farmlet notes: Visual APC 2315; Visual GR 60; wedge looking good for the next 3 pdks; baleage pdks baled today; ulls booked for early Mar & April; reassessed low BCS animals relative to expected calving date; cPdk 4 new grass to be assessed by agronomist & mgmt plan developed; pdk 49 beet looking much better but yield quite variable; spray weeds in new grass

Herd size (cows)	162	Average Cover	2187
Target residual (kg DM/ha)	1550	Average Growth	44
Target pasture intake (kg DM/cow)	16	Farmlet area	63.5
Target Area offered (ha/day)	1.9	Target rotation length	33
Last week rotation avg	30	Target demand	41
Last week supp (kg DM/cow)	1.0	YTD supp (kg DM/cow)	212
Last week N (kg N/ha)	0	Fert N YTD	41
Milk yield	17.4	Effluent N YTD	8
Fat%	N	Last wk MS	W
Prot%	E	YTD MS/cow	E
SCC	X	YTD MS/ha	E
Average BCS	3.9	% less than BCS 4	20%

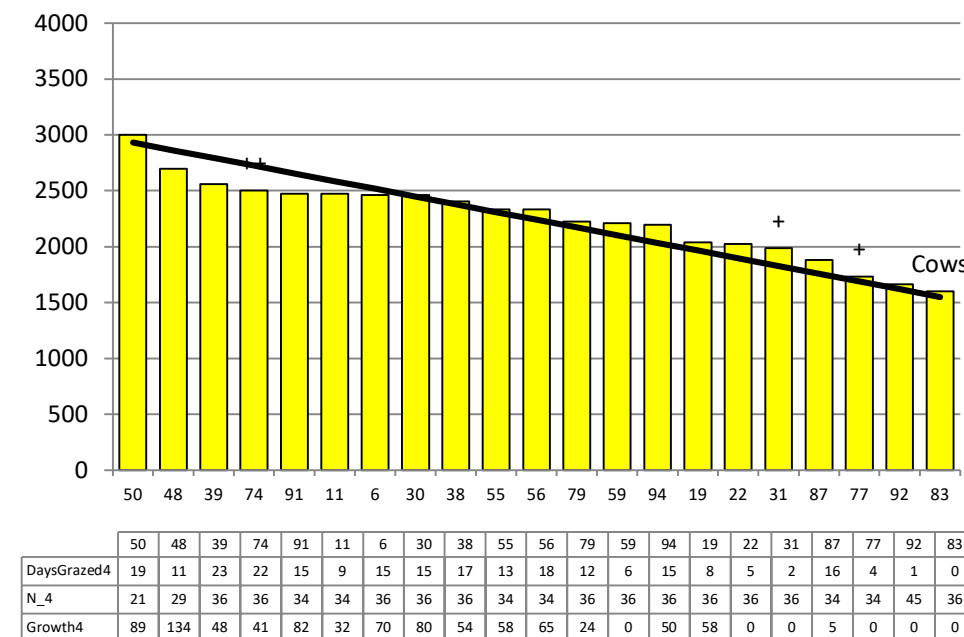
Herd size (cows)	162	Average Cover	2250
Target residual (kg DM/ha)	1550	Average Growth	59
Target pasture intake (kg DM/cow)	16.2	Farmlet area	60.9
Target Area offered (ha/day)	1.9	Target rotation length	32
Last week rotation avg	29	Target demand	43
Last week supp (kg DM/cow)	0.8	YTD supp (kg DM/cow)	198
Last week N (kg N/ha)	0	Fert N YTD	38
Milk yield	17.5	Effluent N YTD	9
Fat%	N	Last wk MS	W
Prot%	E	YTD MS/cow	E
SCC	X	YTD MS/ha	E
Average BCS	4.0	% less than BCS 4	20%

Low Impact Kale



Farmlet notes: Visual APC 2221; Visual GR 49; monitoring pdks closely as wedge suggests a hole; if baleage required for x2 pdks will start inshed feed to all cows; reassessed low BCS animals alongside calving date info & developing cull list; first culls booked for early Mar then early April; setting up autumn mgmt plan for BCS gain and drying off

Low Impact Fodder Beet



Farmlet notes: Visual APC 2210, Visual GR 52; cows have been tight in x2 pdks in last week so planning on 1.4 kg DM (1 bale)/day baleage after new grass pdks 50 and 48; x1 pdk earmarked for topping this week; getting agronomy advice on direct drilled pasture pdk that is not performing; culls booked to start going early Mar & April as feed budget & BCS allows