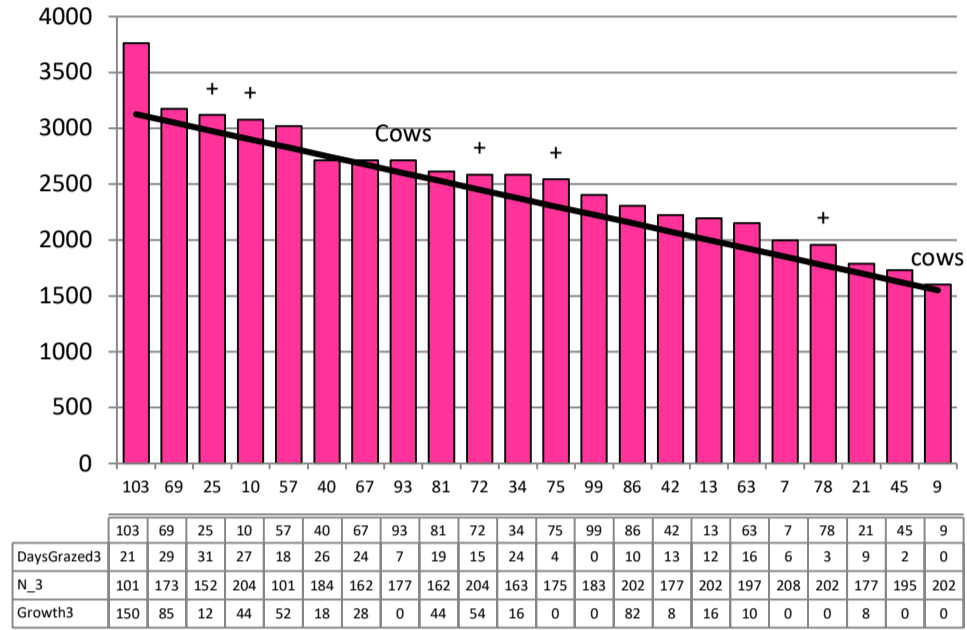


Date 17-03-21

Herd size (cows)	171	Average Cover	2497
Target residual (kg DM/ha)	1550	Average Growth	42
Target pasture intake (kg DM/cow)	17.5	Farmlet area	62.3
Target Area offered (ha/day)	1.9	Target rotation length	33
Last week actual rotation (d)	32	Target demand	48
Last week supp (kg DM/cow)	1.9	YTD supp (kg DM/cow)	587
Last week N (kg N/ha)	6	Fert N YTD	180
Milk yield (L/cow)	16.4	Effluent N YTD	10
Fat%	5.4	Last wk MS	1.8
Prot%	4.4	YTD MS/cow	405
SCC	124	YTD MS/ha	1266
Average BCS	4.4	% less than BCS 4	1%

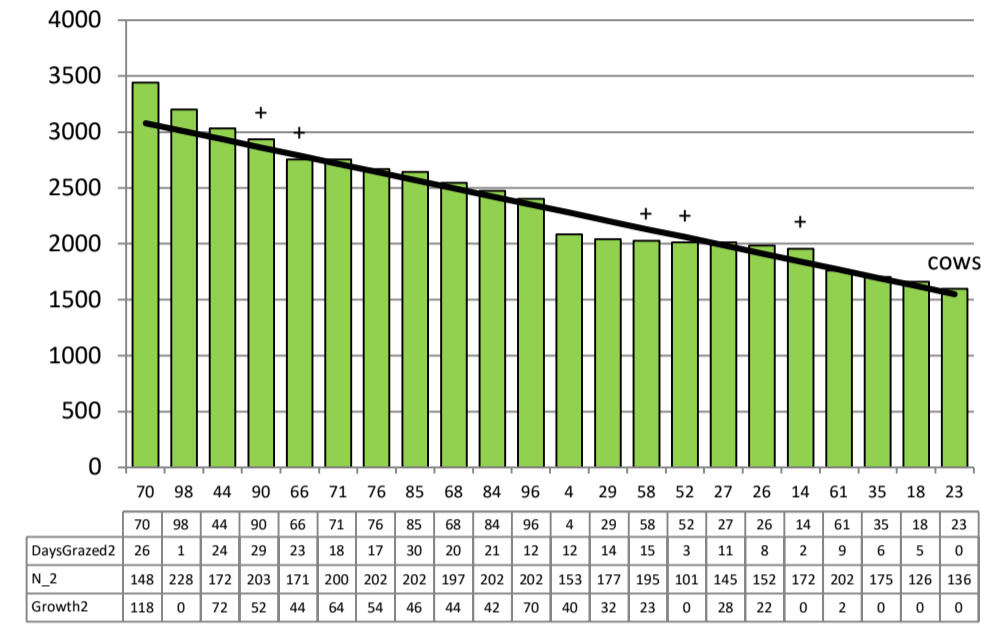
Herd size (cows)	166	Average Cover	2347
Target residual (kg DM/ha)	1550	Average Growth	47
Target pasture intake (kg DM/cow)	17.5	Farmlet area	63.5
Target Area offered (ha/day)	1.9	Target rotation length	33
Last week actual rotation (d)	33	Target demand	46
Last week supp (kg DM/cow)	1.2	YTD supp (kg DM/cow)	339
Last week N (kg N/ha)	9	Fert N YTD	168
Milk yield (L/cow)	15.8	Effluent N YTD	6
Fat%	5.3	Last wk MS	1.7
Prot%	4.5	YTD MS/cow	400
SCC	133	YTD MS/ha	1145
Average BCS	4.3	% less than BCS 4	8%

### Standard Kale



Farmlet notes: Visual APC 2473; Visual GR 47; x20 culls away this week; stop inshed feeding to non BCS management cows & increase pasture allocation; push pasture forward rather than conserve if residuals not being met with reduced cow numbers; continue with last round of N fert; start crop yielding to inform winter feed budget

### Standard Fodder Beet

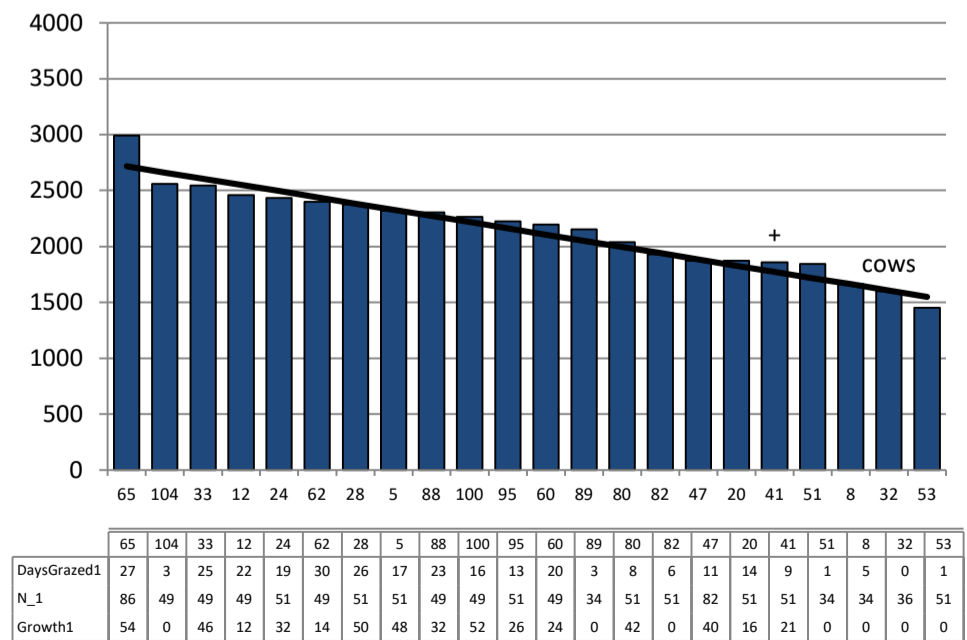


Farmlet notes: Visual APC 2362; Visual GR 45; x19 culls away this week; increase pasture allocation & reduce baleage feeding; push pasture forward rather than conserve if residuals not being met with reduced cow numbers; continue with last round of N fert; start crop yielding to inform winter feed budget

Herd size (cows)	143	Average Cover	2158
Target residual (kg DM/ha)	1550	Average Growth	34
Target pasture intake (kg DM/cow)	15.5	Farmlet area	63.5
Target Area offered (ha/day)	1.9	Target rotation length	33
Last week rotation avg	31	Target demand	35
Last week supp (kg DM/cow)	2.7	YTD supp (kg DM/cow)	293
Last week N (kg N/ha)	4	Fert N YTD	50
Milk yield	16.2	Effluent N YTD	8
Fat%	5.5	Last wk MS	1.8
Prot%	4.6	YTD MS/cow	404
SCC	141	YTD MS/ha	1101
Average BCS	4.3	% less than BCS 4	3%

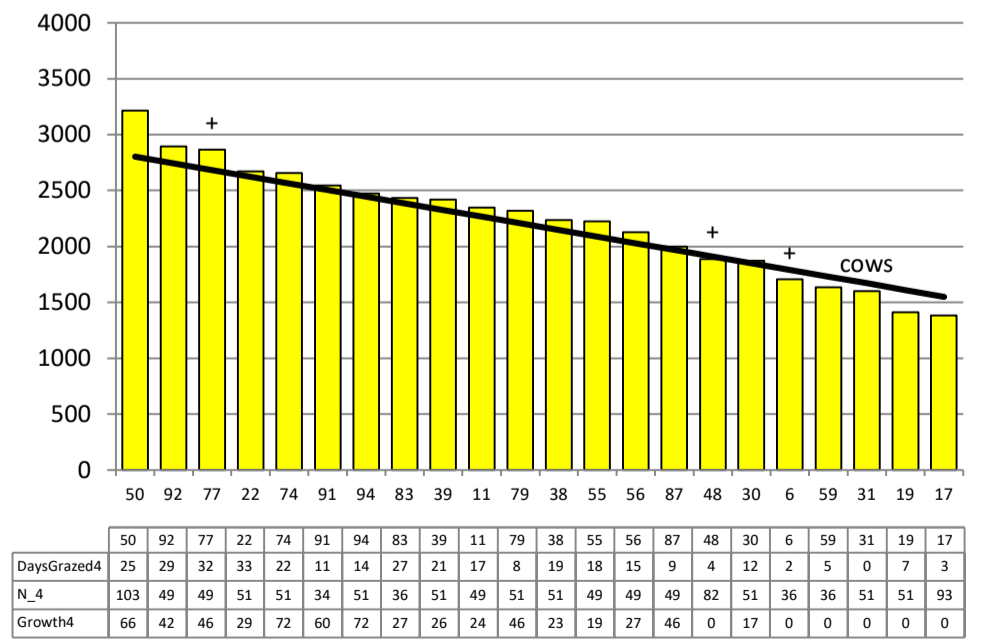
Herd size (cows)	140	Average Cover	2223
Target residual (kg DM/ha)	1550	Average Growth	40
Target pasture intake (kg DM/cow)	17	Farmlet area	63.8
Target Area offered (ha/day)	1.9	Target rotation length	34
Last week rotation avg	31	Target demand	37
Last week supp (kg DM/cow)	1.2	YTD supp (kg DM/cow)	250
Last week N (kg N/ha)	6	Fert N YTD	57
Milk yield	16.0	Effluent N YTD	9
Fat%	5.5	Last wk MS	1.8
Prot%	4.5	YTD MS/cow	405
SCC	116	YTD MS/ha	1071
Average BCS	4.4	% less than BCS 4	2%

### Low Impact Kale



Farmlet notes: Visual APC 2242; Visual GR 31; x11 culls away this week; reduce inshed feeding to non BCS management cows to 1 kg DM/day & increase pasture allocation; push pasture forward rather than conserve if residuals not being met with reduced cow numbers; continue with last round of N fert; start crop yielding to inform winter feed budget

### Low Impact Fodder Beet



Farmlet notes: Visual APC 2261, Visual GR 35; x10 culls away this week; increase pasture allocation & reduce baleage feeding; push pasture forward rather than conserve if residuals not being met with reduced cow numbers; continue with last round of N fert; start crop yielding to inform winter feed budget; ensure target residuals achieved in new grass pdks