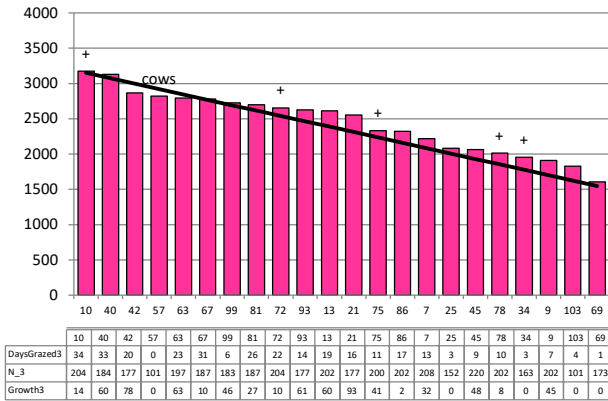


Date 24-03-21

Herd size (cows)	168	Average Cover	2457
Target residual (kg DM/ha)	1550	Average Growth	41
Target pasture intake (kg DM/cow)	16.2	Farmlet area	62.3
Target Area offered (ha/day)	1.7	Target rotation length	37
Last week actual rotation (d)	36	Target demand	44
Last week supp (kg DM/cow)	1.4	YTD supp (kg DM/cow)	592
Last week N (kg N/ha)	5	Fert N YTD	185
Milk yield (L/cow)	15.5	Effluent N YTD	10
Fat%	N	Last wk MS	W
Prot%	E	YTD MS/cow	E
SCC	X	YTD MS/ha	E
Average BCS	T	% less than BCS 4	K

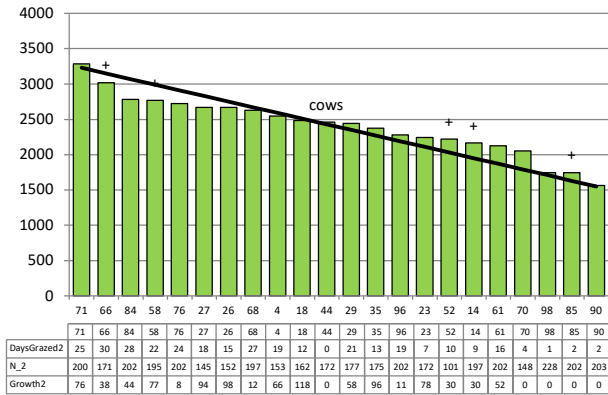
Herd size (cows)	166	Average Cover	2411
Target residual (kg DM/ha)	1550	Average Growth	58
Target pasture intake (kg DM/cow)	17.2	Farmlet area	63.5
Target Area offered (ha/day)	1.7	Target rotation length	37
Last week actual rotation (d)	35	Target demand	45
Last week supp (kg DM/cow)	0.3	YTD supp (kg DM/cow)	339
Last week N (kg N/ha)	4	Fert N YTD	172
Milk yield (L/cow)	16.0	Effluent N YTD	6
Fat%	N	Last wk MS	W
Prot%	E	YTD MS/cow	E
SCC	X	YTD MS/ha	E
Average BCS	T	% less than BCS 4	K

### Standard Kale



Farmlet notes: Visual APC 2407; Visual GR 48; lengthen rotation to 37 d; No inshed feeding to main herd cows; first crop yields completed this week; Identifying candidates for early dry off to achieve BCS targets; x3 culls left the farm this week; just finishing off last round of N fertiliser applications; Autumn feed budget and BCS mgmt key priorities on farm

### Standard Fodder Beet

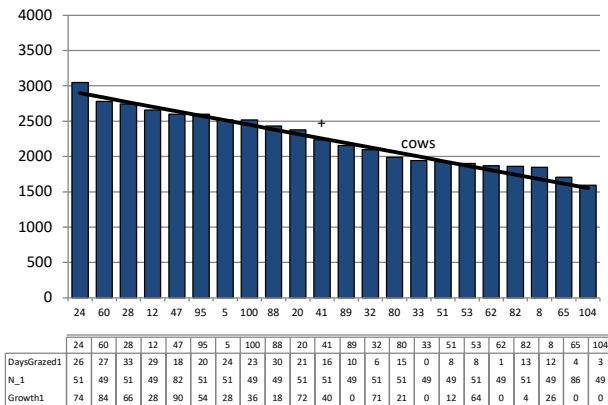


Farmlet notes: Visual APC 2420; Visual GR 64; lengthened rotation to 37d; No supplementary feed currently required but assessing residuals and production daily; first crop yields completed this week; info used to plan when autumn feeding of beet can start; finishing off last round of N fert; Autumn feed budgets and BCS mgmt are currently key priorities on farm

Herd size (cows)	143	Average Cover	2244
Target residual (kg DM/ha)	1550	Average Growth	46
Target pasture intake (kg DM/cow)	16	Farmlet area	63.5
Target Area offered (ha/day)	1.7	Target rotation length	37
Last week rotation avg	38	Target demand	36
Last week supp (kg DM/cow)	1.8	YTD supp (kg DM/cow)	300
Last week N (kg N/ha)	3	Fert N YTD	53
Milk yield	16.6	Effluent N YTD	8
Fat%	N	Last wk MS	W
Prot%	E	YTD MS/cow	E
SCC	X	YTD MS/ha	E
Average BCS	T	% less than BCS 4	K

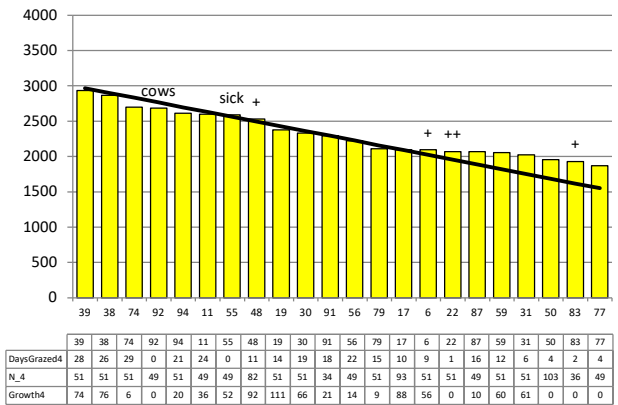
Herd size (cows)	140	Average Cover	2319
Target residual (kg DM/ha)	1550	Average Growth	50
Target pasture intake (kg DM/cow)	17.2	Farmlet area	63.8
Target Area offered (ha/day)	1.7	Target rotation length	38
Last week rotation avg	34	Target demand	38
Last week supp (kg DM/cow)	0.3	YTD supp (kg DM/cow)	250
Last week N (kg N/ha)	1	Fert N YTD	58
Milk yield	15.5	Effluent N YTD	9
Fat%	N	Last wk MS	W
Prot%	E	YTD MS/cow	E
SCC	X	YTD MS/ha	E
Average BCS	T	% less than BCS 4	K

### Low Impact Kale



Farmlet notes: Visual APC 2321; Visual GR50; Growth currently exceeding demand so inshed feeding has been reduced; lengthened the rotation to 37 days but will readjust as required; Final N fertiliser applications this week; First crop yields completed; identifying candidates for early dry off to achieve BCS targets; Autumn feed budget and BCS mgmt are priorities

### Low Impact Fodder Beet



Farmlet notes: Visual APC 2269, Visual GR 46; Growth exceeding demand so no supplementary feed required; surplus being used to push rotation out to 37 d but will reassess as needed; First crop yields complete to work out when autumn beet feeding can commence; last round of N fert planned for this week; Feed budgets and BCS mgmt are priorities.