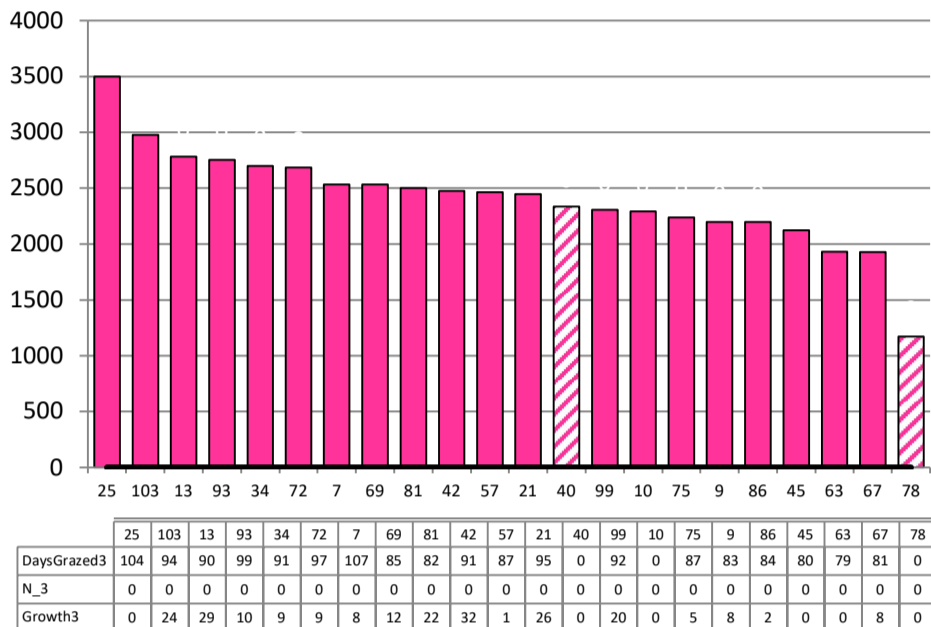


Date 11-08-21

Herd size (cows)	200	Average Cover	2405
Target residual (kg DM/ha)		Average Growth	13
Target pasture intake (kg DM/cow)		Farmlet area	62.3
Target Area offered (ha/day)		Target rotation length	#DIV/0!
Last week actual rotation (d)	#N/A	Target demand	0
Last week supp (kg DM/cow)	#N/A	YTD supp (kg DM/cow)	#N/A
Last week N (kg N/ha)	#N/A	Fert N YTD	#N/A
Milk yield (L/cow)	11.5	Effluent N YTD	0
Fat%	N	Last wk MS	W
Prot%	E	YTD MS/cow	E
SCC	X	YTD MS/ha	E
Average BCS	T	% less than BCS 4	K

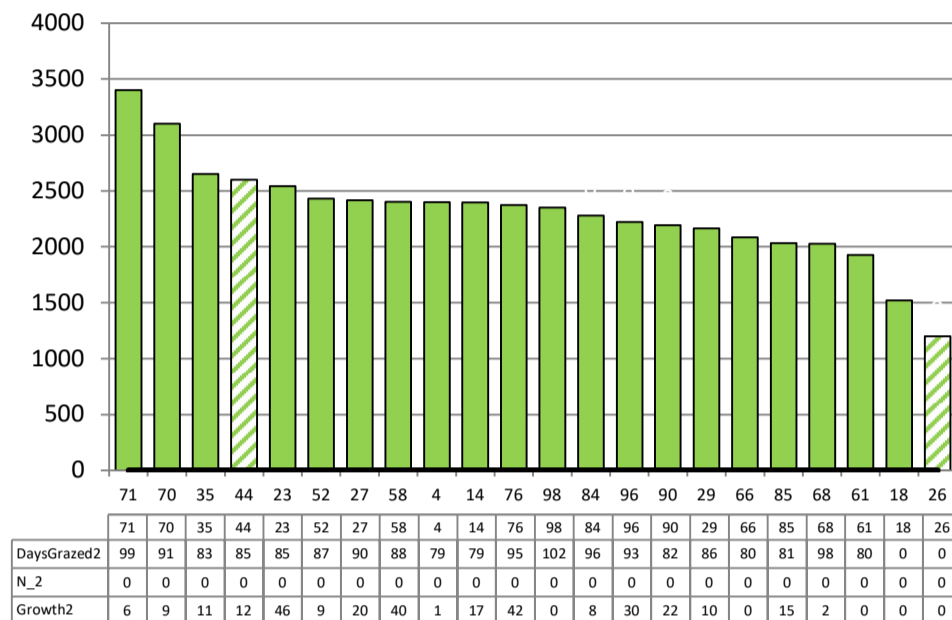
Standard Kale



Farmlet notes: Visual APC 2472, GR 5: 23% of herd milking & 42% still on crop; combined kale & fodder beet springer and milker mobs but will split into separate kale and beet next Mon; springer being moved 2x/d in wet weather and calves picked up 3x per day; milkers now in pdk 25

Herd size (cows)	200	Average Cover	2308
Target residual (kg DM/ha)		Average Growth	17
Target pasture intake (kg DM/cow)		Farmlet area	63.5
Target Area offered (ha/day)		Target rotation length	#DIV/0!
Last week actual rotation (d)	#N/A	Target demand	0
Last week supp (kg DM/cow)	#N/A	YTD supp (kg DM/cow)	#N/A
Last week N (kg N/ha)	#N/A	Fert N YTD	#N/A
Milk yield (L/cow)	11.7	Effluent N YTD	0
Fat%	N	Last wk MS	W
Prot%	E	YTD MS/cow	E
SCC	X	YTD MS/ha	E
Average BCS	T	% less than BCS 4	K

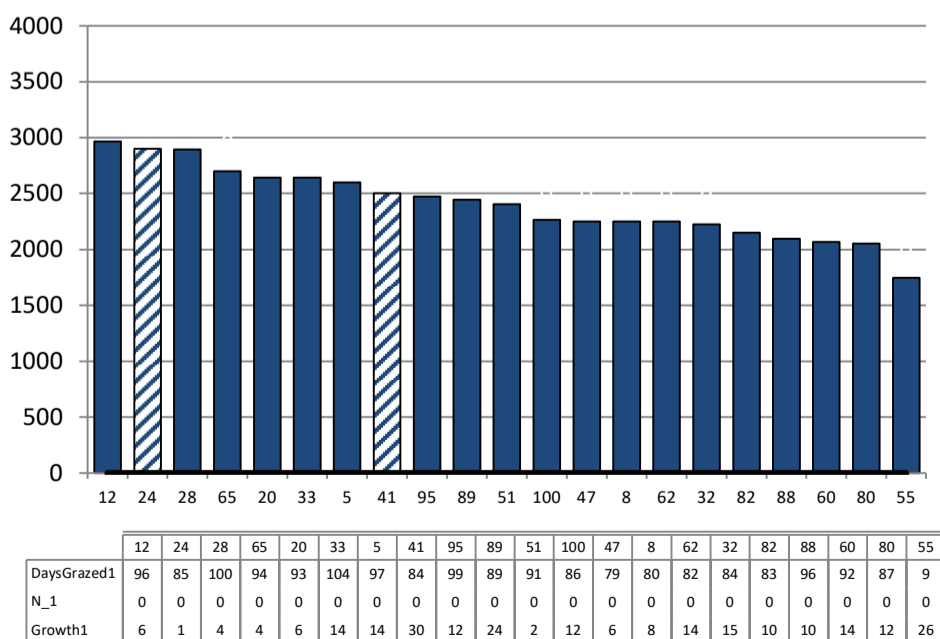
Standard Fodder Beet



Farmlet notes: Visual APC 2377, GR 14; 25% of herd milking & 41% still on crop; combined kale & fodder beet springer and milker mobs but will split into separate kale and beet milkers next Mon; springers being moved 2x/d in wet weather and calves picked up 3x per day; colostrum mob grazing 71; pugging damage in 18

Herd size (cows)	167	Average Cover	2406
Target residual (kg DM/ha)		Average Growth	12
Target pasture intake (kg DM/cow)		Farmlet area	61.0
Target Area offered (ha/day)		Target rotation length	#DIV/0!
Last week rotation avg	#N/A	Target demand	0
Last week supp (kg DM/cow)	#N/A	YTD supp (kg DM/cow)	#N/A
Last week N (kg N/ha)	#N/A	Fert N YTD	#N/A
Milk yield	10.0	Effluent N YTD	0
Fat%	N	Last wk MS	W
Prot%	E	YTD MS/cow	E
SCC	X	YTD MS/ha	E
Average BCS	T	% less than BCS 4	K

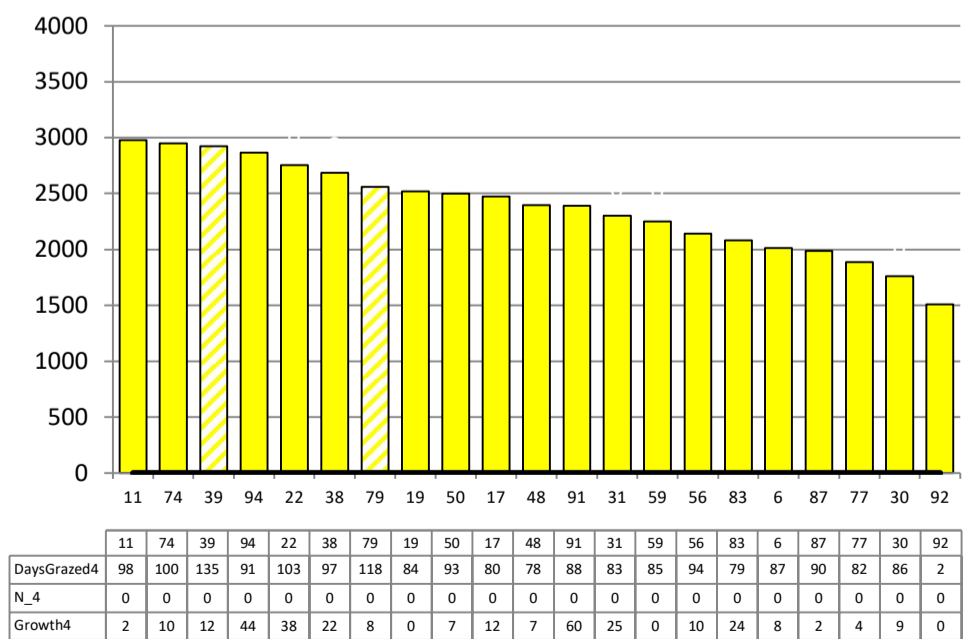
Low Impact Kale



Farmlet notes: Visual APC 2413, GR 4; 19% of herd milking & 37% still on crop; combined kale & fodder beet springer and milker mobs but will split into separate kale and beet milkers next Mon; springers being moved 2x/d in wet weather and calves picked up 3x per day; kale springer mob grazing 41; pdk 12 for colostrums

Herd size (cows)	167	Average Cover	2377
Target residual (kg DM/ha)		Average Growth	16
Target pasture intake (kg DM/cow)		Farmlet area	60.9
Target Area offered (ha/day)	2.3	Target rotation length	26
Last week rotation avg	#N/A	Target demand	0
Last week supp (kg DM/cow)	#N/A	YTD supp (kg DM/cow)	#N/A
Last week N (kg N/ha)	#N/A	Fert N YTD	#N/A
Milk yield	12.0	Effluent N YTD	0
Fat%	N	Last wk MS	W
Prot%	E	YTD MS/cow	E
SCC	X	YTD MS/ha	E
Average BCS	T	% less than BCS 4	K

Low Impact Fodder Beet



Farmlet notes: Visual APC 2405, GR 10; 25% of herd milking & 39% still on crop; combined kale & fodder beet springer and milker mobs but will split into separate kale and beet milkers next Mon; springers being moved 2x/d in wet weather and calves picked up 3x per day; heifer springer mob grazing 79; pdk 11 for colostrums