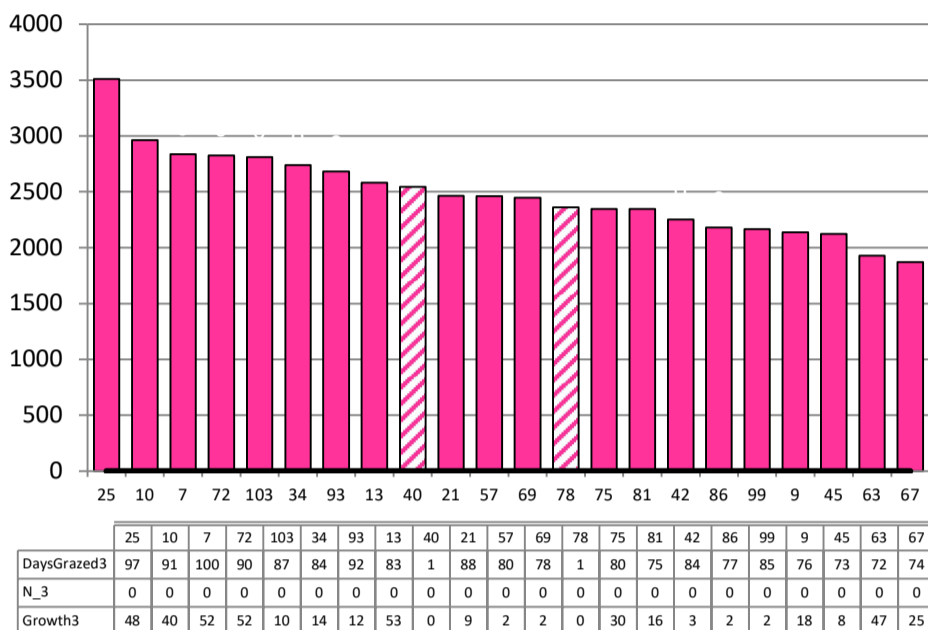


Date 04-08-21

Herd size (cows)	200	Average Cover	2475
Target residual (kg DM/ha)		Average Growth	22
Target pasture intake (kg DM/cow)		Farmlet area	62.3
Target Area offered (ha/day)		Target rotation length	#DIV/0!
Last week actual rotation (d)	#N/A	Target demand	0
Last week supp (kg DM/cow)	#N/A	YTD supp (kg DM/cow)	#N/A
Last week N (kg N/ha)	#N/A	Fert N YTD	#N/A
Milk yield (L/cow)	7.0	Effluent N YTD	0
Fat%	N	Last wk MS	W
Prot%	E	YTD MS/cow	E
SCC	X	YTD MS/ha	E
Average BCS	T	% less than BCS 4	K

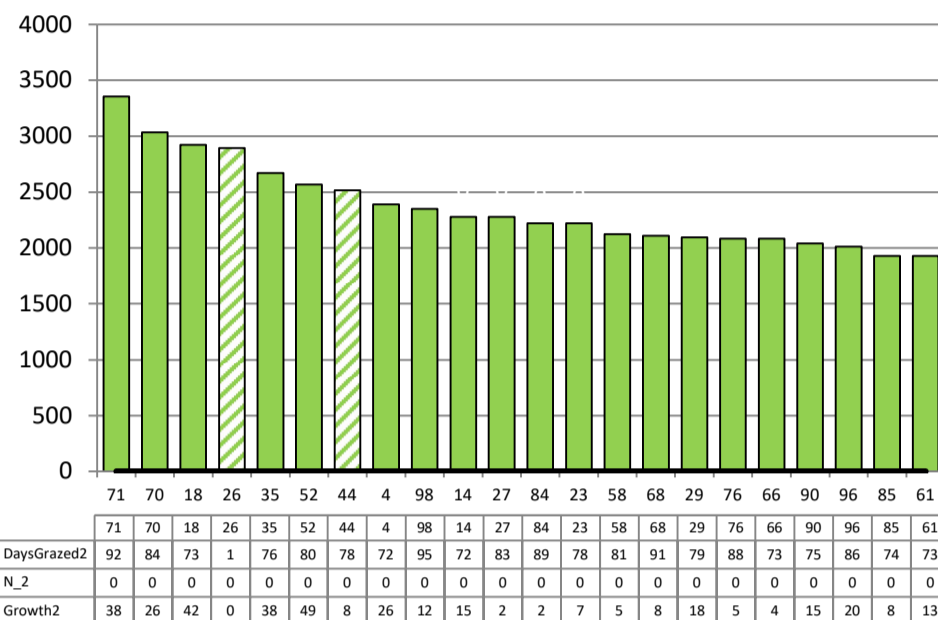
Herd size (cows)	202	Average Cover	2372
Target residual (kg DM/ha)		Average Growth	17
Target pasture intake (kg DM/cow)		Farmlet area	63.5
Target Area offered (ha/day)		Target rotation length	#DIV/0!
Last week actual rotation (d)	#N/A	Target demand	0
Last week supp (kg DM/cow)	#N/A	YTD supp (kg DM/cow)	#N/A
Last week N (kg N/ha)	#N/A	Fert N YTD	#N/A
Milk yield (L/cow)	9.8	Effluent N YTD	0
Fat%	N	Last wk MS	W
Prot%	E	YTD MS/cow	E
SCC	X	YTD MS/ha	E
Average BCS	T	% less than BCS 4	K

### Standard Kale



Farmlet notes: Visual APC 2538; GR 29: 6.5% of herd calved, Av days off crop 9 & on av 8 days early; kale springers grazing pdk 40 & heifer springers in 78; increased baleage to springers as 20 m2 only giving 4 kg DM pasture; springer drafting x2 per week; will split into milkers and colostrums on Mon once 100 cows calved; pdk 25 will be first to be grazed with milkers

### Standard Fodder Beet

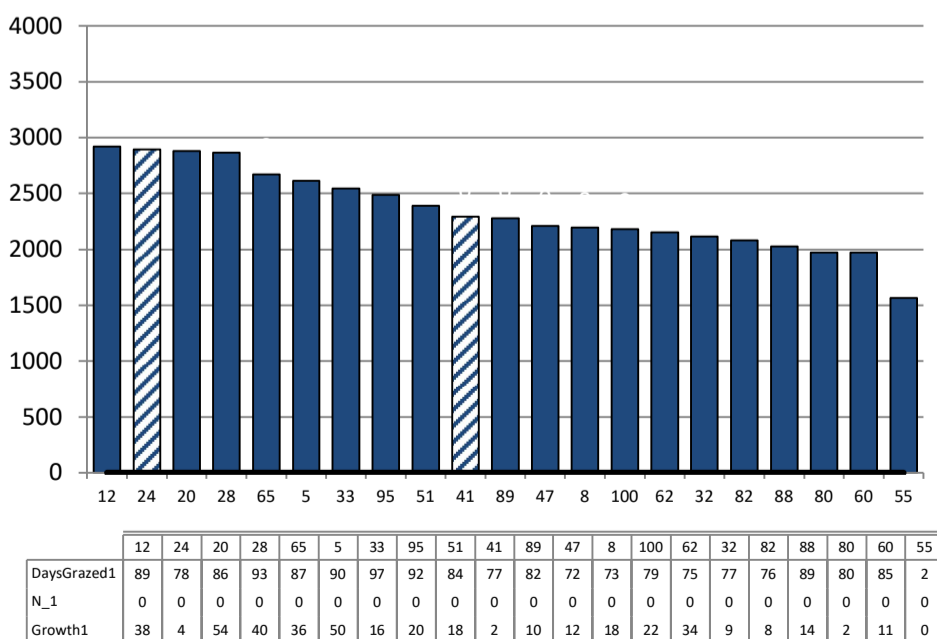


Farmlet notes: Visual APC 2452 GR 26: 11% of herd calved, Av days off crop 9 & on av 7 days early; FB springers grazing pdk 26 & heifer springers in 78; increased baleage to springers as 20 m2 only giving 4 kg DM pasture; springer drafting x2 per week; will split into milkers and colostrums on Mon once 100 cows calved; pdk 71 will be grazed with colostrums

Herd size (cows)	167	Average Cover	2348
Target residual (kg DM/ha)		Average Growth	21
Target pasture intake (kg DM/cow)		Farmlet area	61.0
Target Area offered (ha/day)		Target rotation length	#DIV/0!
Last week rotation avg	#N/A	Target demand	0
Last week supp (kg DM/cow)	#N/A	YTD supp (kg DM/cow)	#N/A
Last week N (kg N/ha)	#N/A	Fert N YTD	#N/A
Milk yield	12.8	Effluent N YTD	0
Fat%	N	Last wk MS	W
Prot%	E	YTD MS/cow	E
SCC	X	YTD MS/ha	E
Average BCS	T	% less than BCS 4	K

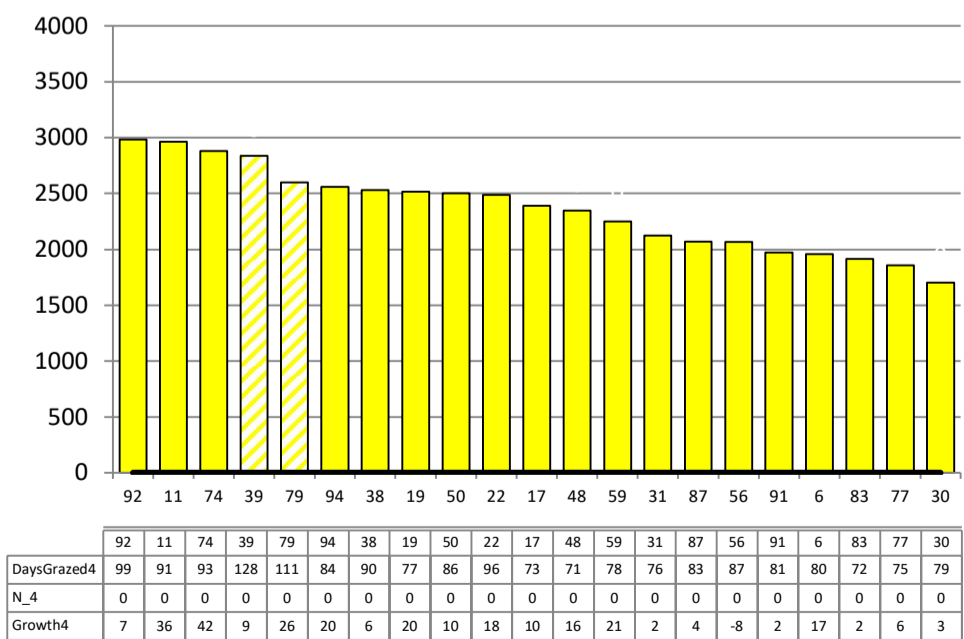
Herd size (cows)	167	Average Cover	2358
Target residual (kg DM/ha)		Average Growth	13
Target pasture intake (kg DM/cow)		Farmlet area	60.9
Target Area offered (ha/day)	2.3	Target rotation length	26
Last week rotation avg	#N/A	Target demand	0
Last week supp (kg DM/cow)	#N/A	YTD supp (kg DM/cow)	#N/A
Last week N (kg N/ha)	#N/A	Fert N YTD	#N/A
Milk yield	11.0	Effluent N YTD	0
Fat%	N	Last wk MS	W
Prot%	E	YTD MS/cow	E
SCC	X	YTD MS/ha	E
Average BCS	T	% less than BCS 4	K

### Low Impact Kale



Farmlet notes: Visual APC 2391 GR 23: 8% of herd calved, Av days off crop 8 & on av 7 days early; kale springers grazing pdk 40 & heifer springers in 78; pdk 55 grazed by combined colostrum/milker mob increased baleage to springers as 20 m2 only giving 4 kg DM pasture; springer drafting x2 per week; will split into milkers and colostrums on Mon once 100 cows calved;

### Low Impact Fodder Beet



Farmlet notes: Visual APC 2441, GR 17: 10% of herd calved, Av days off crop 7 & on av 9 days early; FB springers grazing pdk 26 & heifer springers in 78; increased baleage to springers as 20 m2 only giving 4 kg DM pasture; springer drafting x2 per week; will split into milkers and colostrums on Mon once 100 cows calved; pdk 78 next for heifer springers