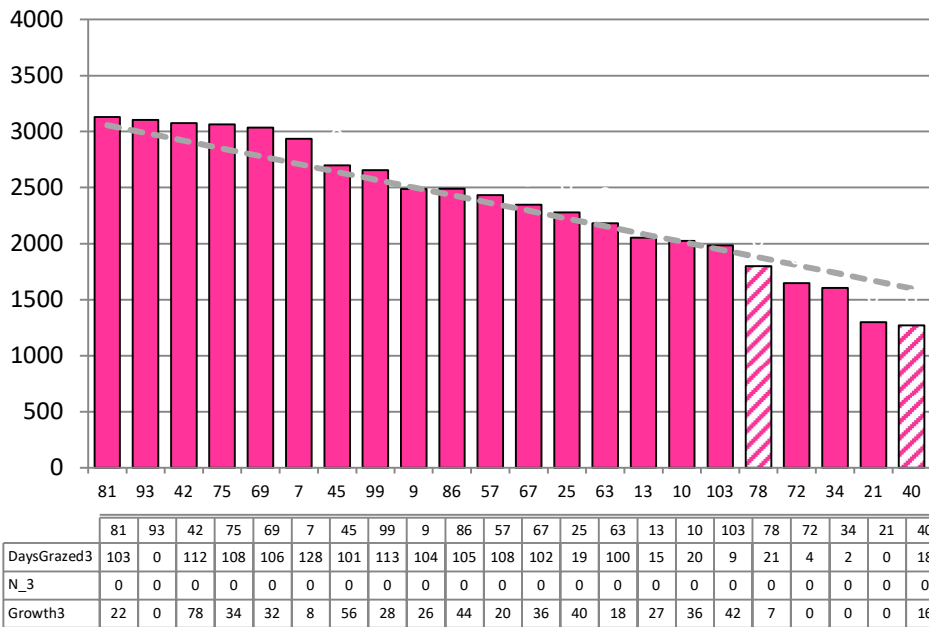


Date 01-09-21

Herd size (cows)	130	Average Cover	2363
Target residual (kg DM/ha)	1600	Average Growth	32
Target pasture intake (kg DM/cow)	13	Farmlet area	62.3
Target Area offered (ha/day)	1.2	Target rotation length	54
Last week actual rotation (d)	49	Target demand	27
Last week supp (kg DM/cow)	4.1	YTD supp (kg DM/cow)	46
Last week N (kg N/ha)	0	Fert N YTD	0
Milk yield (L/cow)	19.4	Effluent N YTD	0
Fat%	N	Last wk MS	W
Prot%	E	YTD MS/cow	E
SCC	X	YTD MS/ha	E
Average BCS	5.7	% less than BCS 4.5	0%

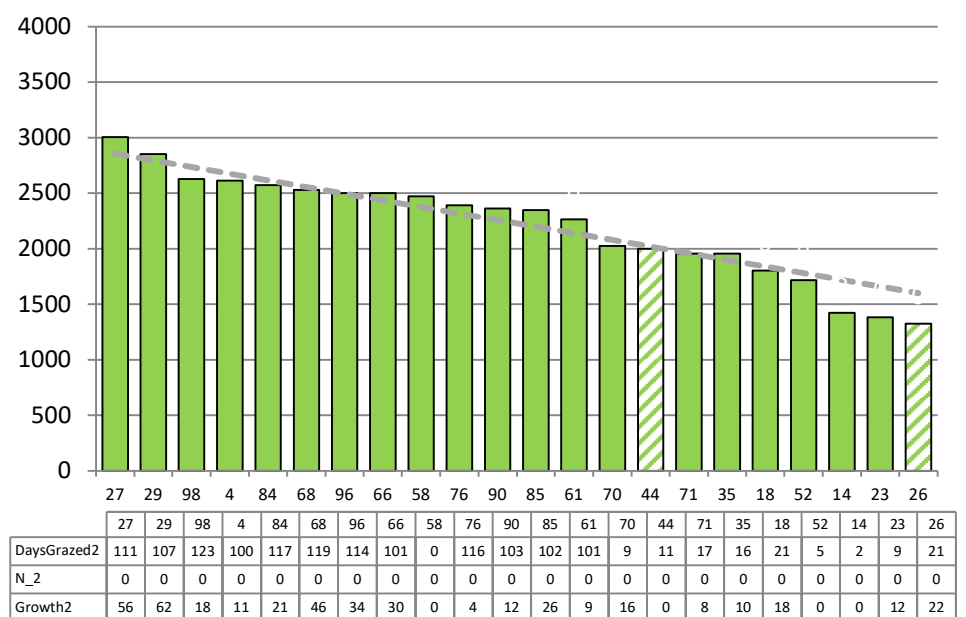
Herd size (cows)	130	Average Cover	2208
Target residual (kg DM/ha)	1600	Average Growth	23
Target pasture intake (kg DM/cow)	14	Farmlet area	63.5
Target Area offered (ha/day)	1.45	Target rotation length	44
Last week actual rotation (d)	66	Target demand	29
Last week supp (kg DM/cow)	2.3	YTD supp (kg DM/cow)	24
Last week N (kg N/ha)	0	Fert N YTD	0
Milk yield (L/cow)	18.6	Effluent N YTD	0
Fat%	N	Last wk MS	W
Prot%	E	YTD MS/cow	E
SCC	X	YTD MS/ha	E
Average BCS	5.4	% less than BCS 4.5	0%

### Standard Kale



Farmlet notes: 01/09/2021 VIS APC 2393, GR 25; 68% of the cows in milk; increase in area allocation (approx. 53 day rotation) & high pre-graze mass will reduce baleage; 30 kg N as Ammo31 to be applied to all paddocks below 2200 on the wedge; last few days of dries on kale crop then all onto pasture but still with lates separate; area allocation ahead of SRP but APC ok.

### Standard Fodder Beet

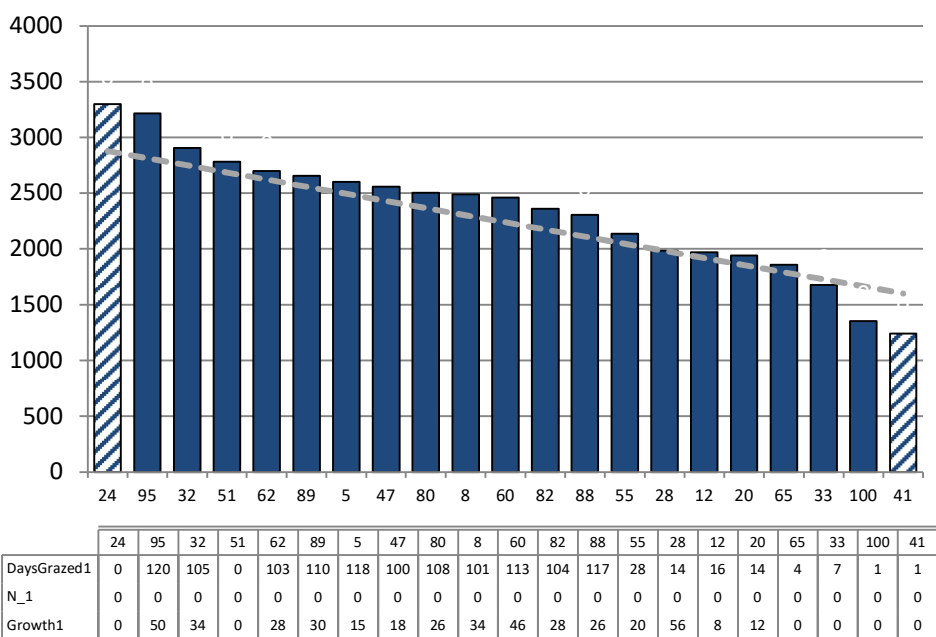


Farmlet notes: 01/09/2021 VIS APC 2291, GR 19; 69% of the cows in milk; increase in area allocation (approx. 43day rotation) to reduce baleage as too much required for slower rotation; waiting for beet to be lifted to feed to milkers; 30 kg N as Ammo31 to be applied to all paddocks below 2200 on the wedge; area allocation ahead of SRP but APC ok; dries staying on beet

Herd size (cows)	115	Average Cover	2333
Target residual (kg DM/ha)	1600	Average Growth	29
Target pasture intake (kg DM/cow)	15	Farmlet area	61.0
Target Area offered (ha/day)	1.35	Target rotation length	45
Last week rotation avg	63	Target demand	28
Last week supp (kg DM/cow)	4.0	YTD supp (kg DM/cow)	38
Last week N (kg N/ha)	0	Fert N YTD	0
Milk yield	19.6	Effluent N YTD	0
Fat%	N	Last wk MS	W
Prot%	E	YTD MS/cow	E
SCC	X	YTD MS/ha	E
Average BCS	5.6	% less than BCS 4.5	0%

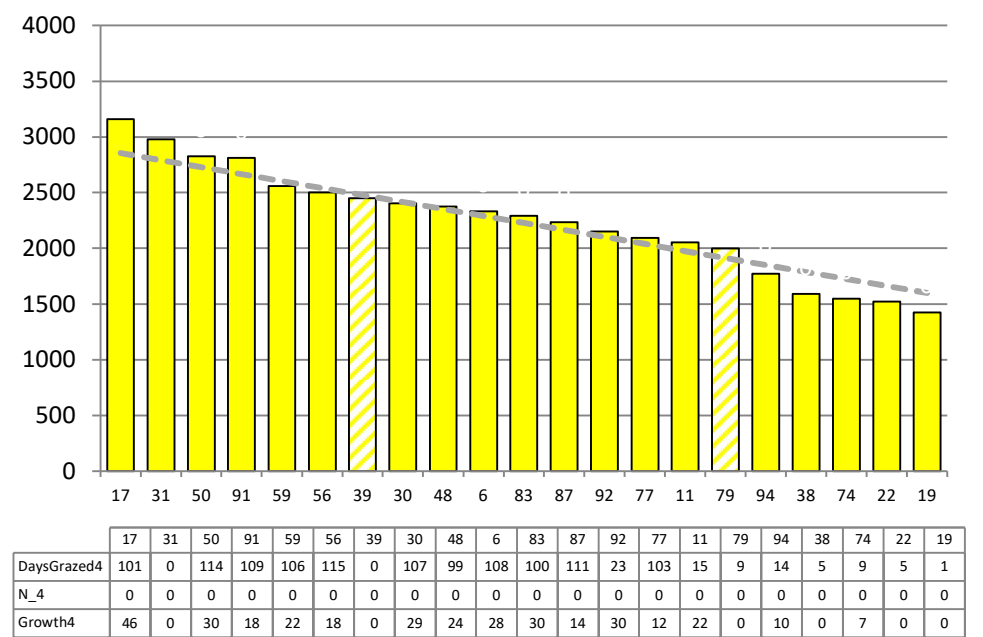
Herd size (cows)	130	Average Cover	2242
Target residual (kg DM/ha)	1600	Average Growth	23
Target pasture intake (kg DM/cow)	14	Farmlet area	60.9
Target Area offered (ha/day)	1.45	Target rotation length	42
Last week rotation avg	49	Target demand	30
Last week supp (kg DM/cow)	2.5	YTD supp (kg DM/cow)	27
Last week N (kg N/ha)	0	Fert N YTD	0
Milk yield	18.3	Effluent N YTD	0
Fat%	N	Last wk MS	W
Prot%	E	YTD MS/cow	E
SCC	X	YTD MS/ha	E
Average BCS	5.6	% less than BCS 4.5	0%

### Low Impact Kale



Farmlet notes: 01/09/2021 VIS APC 2350, GR 14; 72% of the cows in milk; increase in area allocation (approx. 47 day rotation) to reduce baleage; 20 kg N as granulated ammo sulphate to be applied to all paddocks below 2200 on the wedge; last few days of dries on kale crop then all onto pasture but still with lates separate; area allocation ahead of SRP but APC ok.

### Low Impact Fodder Beet



Farmlet notes: 01/09/2021 VIS APC 2345, GR 12; 79% of the cows in milk; increase in area allocation (approx. 43day rotation) to reduce baleage as too much required for slower rotation; waiting for beet to be lifted to feed to milkers; 20 kg N as granulated Ammo sulphate to be applied to all pdks below 2200kg DM/ha; dries staying on beet, calving has slowed this week.