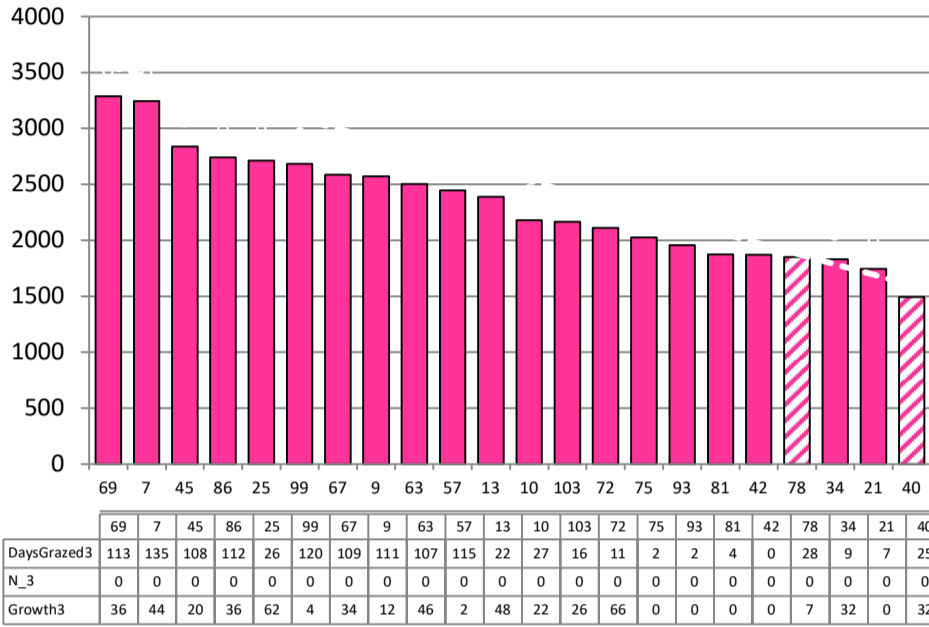


Date 08-09-21

Herd size (cows)	189	Average Cover	2334
Target residual (kg DM/ha)	1600	Average Growth	31
Target pasture intake (kg DM/cow)	15	Farmlet area	62.3
Target Area offered (ha/day)	1.45	Target rotation length	43
Last week actual rotation (d)	43	Target demand	45
Last week supp (kg DM/cow)	2.9	YTD supp (kg DM/cow)	68
Last week N (kg N/ha)	0	Fert N YTD	0
Milk yield (L/cow)	21.0	Effluent N YTD	0
Fat%	4.8	Last wk MS	2.0
Prot%	3.7	YTD MS/cow	67
SCC	162	YTD MS/ha	207
Average BCS	4.7	% less than BCS 4	3%

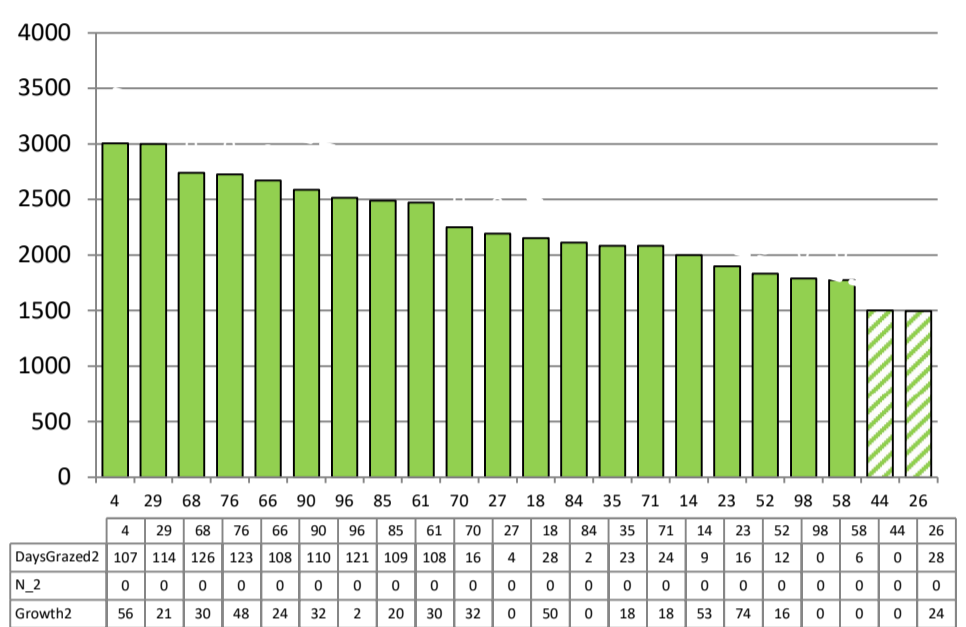
Herd size (cows)	182	Average Cover	2241
Target residual (kg DM/ha)	1600	Average Growth	32
Target pasture intake (kg DM/cow)	15	Farmlet area	63.5
Target Area offered (ha/day)	1.45	Target rotation length	44
Last week actual rotation (d)	44	Target demand	43
Last week supp (kg DM/cow)	1.6	YTD supp (kg DM/cow)	34
Last week N (kg N/ha)	0	Fert N YTD	0
Milk yield (L/cow)	20.7	Effluent N YTD	0
Fat%	4.8	Last wk MS	2.0
Prot%	3.7	YTD MS/cow	67
SCC	213	YTD MS/ha	201
Average BCS	4.6	% less than BCS 4	4%

Standard Kale



Farmlet notes: Visual APC 2393; GR25; 77% of cows in milk; Increase area allocation to 1.45 ha/d to milkers (approx. 43 day rotation); inshed feeding to stay the same; no baleage required; all dry cows now off crop, lates still grazing separately cleaning up a springer pdk; APC still above SRP & feed budget so utilising more area than the plan; No major animal health issues

Standard Fodder Beet

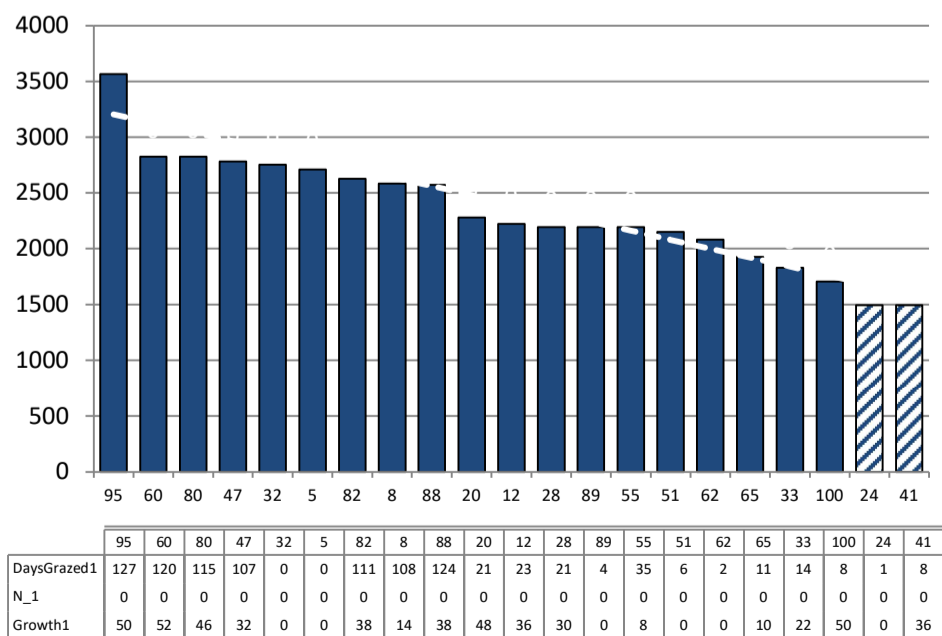


Farmlet notes: Visual APC 2291; GR 19; 73% of cows in milk; Area allocation staying at 1.45 ha/day to milkers (approx. 43 day rotation); will lift beet with beet bucket ASAP and transition milkers up to 2 kg DM/cow/day over the next week to reduce silage feeding; APC still above SRP & feed budget so utilising more area than the plan; seeing a few more metabolics in this herd now

Herd size (cows)	155	Average Cover	2332
Target residual (kg DM/ha)	1600	Average Growth	34
Target pasture intake (kg DM/cow)	15	Farmlet area	61.0
Target Area offered (ha/day)	1.45	Target rotation length	42
Last week rotation avg	36	Target demand	38
Last week supp (kg DM/cow)	2.4	YTD supp (kg DM/cow)	55
Last week N (kg N/ha)	0	Fert N YTD	0
Milk yield	22.9	Effluent N YTD	0
Fat%	4.8	Last wk MS	2.2
Prot%	3.9	YTD MS/cow	71
SCC	94	YTD MS/ha	194
Average BCS	4.6	% less than BCS 4	3%

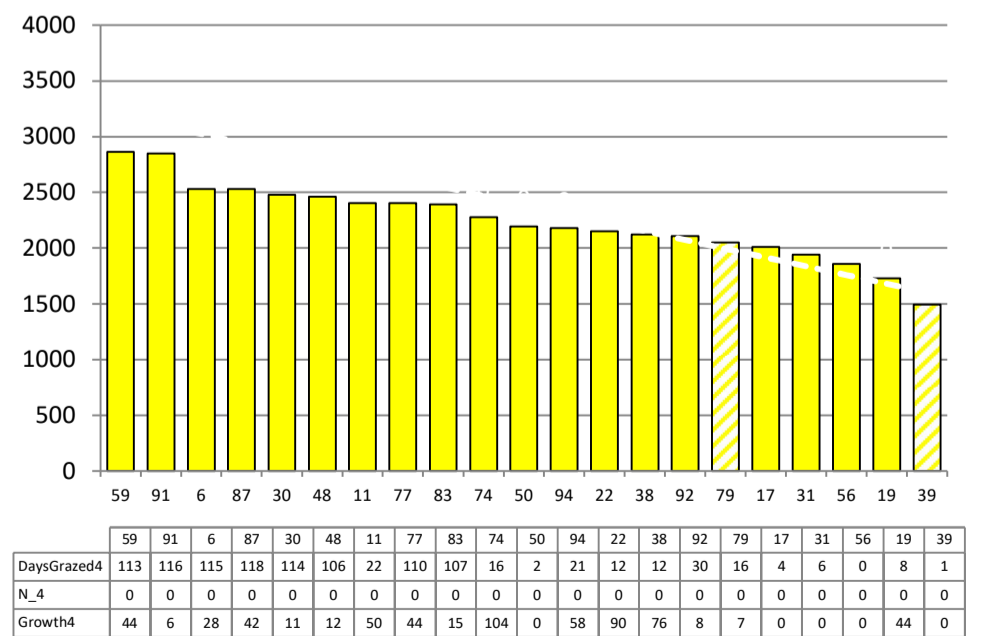
Herd size (cows)	153	Average Cover	2240
Target residual (kg DM/ha)	1600	Average Growth	40
Target pasture intake (kg DM/cow)	15	Farmlet area	60.9
Target Area offered (ha/day)	1.45	Target rotation length	42
Last week rotation avg	42	Target demand	38
Last week supp (kg DM/cow)	0.5	YTD supp (kg DM/cow)	30
Last week N (kg N/ha)	0	Fert N YTD	0
Milk yield	21.1	Effluent N YTD	0
Fat%	4.6	Last wk MS	1.9
Prot%	3.7	YTD MS/cow	66
SCC	99	YTD MS/ha	168
Average BCS	4.6	% less than BCS 4	1%

Low Impact Kale



Farmlet notes: Visual APC 2350; GR 14; 79% of cows in milk; Increase area allocation to 1.45 ha/d to milkers (approx. 43 day rotation); inshed feeding to stay the same; no baleage required; all dry cows now off crop, lates still grazing separately cleaning up a springer pdk; APC still above SRP & feed budget so utilising more area than the plan; No major animal health issues

Low Impact Fodder Beet



Farmlet notes: Visual APC 2345; GR 12; 82% of cows in milk; Area allocation staying at 1.45 ha/day to milkers (approx. 43 day rotation); will lift beet with beet bucket ASAP and transition milkers up to 2 kg DM/cow/day over the next week to reduce silage feeding; APC still above SRP & feed budget so utilising more area than the plan; no major animal health issues in this herd