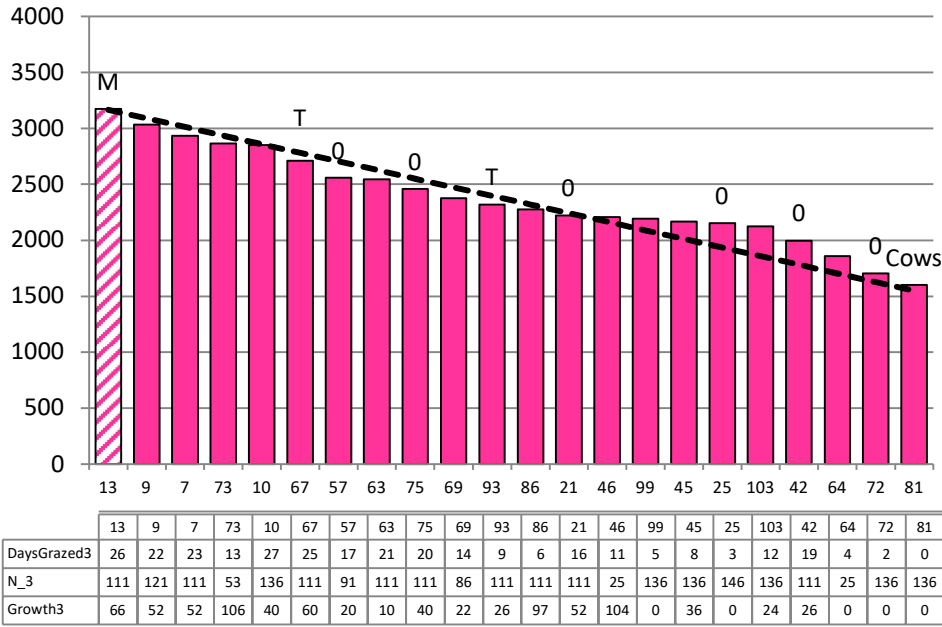


Date 12-01-22

Herd size (cows)	192	Average Cover	2367
Target residual (kg DM/ha)	1550	Average Growth	49
Target pasture intake (kg DM/cow)	16	Farmlet area	62.8
Target Area offered (ha/day)	1.90	Target rotation length	33
Last week actual rotation (d)	28	Target demand	49
Last week supp (kg DM/cow)	2.0	YTD supp (kg DM/cow)	380
Last week N (kg N/ha)	0	Fert N YTD	111
Milk yield (L/cow)	17.9	Effluent N YTD	3
Fat%	N	Last wk MS	W
Prot%	E	YTD MS/cow	E
SCC	X	YTD MS/ha	E
Average BCS	T	% less than BCS 4	K

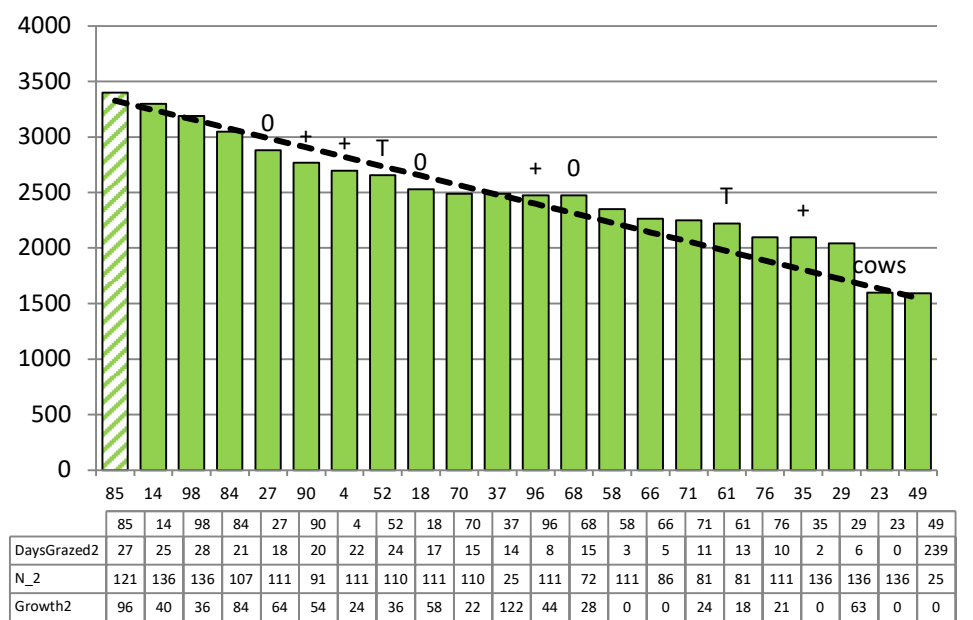
Herd size (cows)	193	Average Cover	2495
Target residual (kg DM/ha)	1550	Average Growth	49
Target pasture intake (kg DM/cow)	17.5	Farmlet area	63.5
Target Area offered (ha/day)	1.9	Target rotation length	33
Last week actual rotation (d)	36	Target demand	53
Last week supp (kg DM/cow)	1.1	YTD supp (kg DM/cow)	284
Last week N (kg N/ha)	0	Fert N YTD	102
Milk yield (L/cow)	17.4	Effluent N YTD	5
Fat%	N	Last wk MS	W
Prot%	E	YTD MS/cow	E
SCC	X	YTD MS/ha	E
Average BCS	T	% less than BCS 4	K

Standard Kale



Farmlet notes: Visual APC 2346, GR 55; inshed feeding reduced to 1 kg DM/cow/day as 70:30 PKE barley blend & pdk 13 dropped for conservation as above pre-graze target & residual needs resetting; N fertiliser to resume at 30 kg N/ha to all grass pdks; N fertiliser onto crops at canopy closure & italian ryegrass for wintering; bulls removed from herd today

Standard Fodder Beet

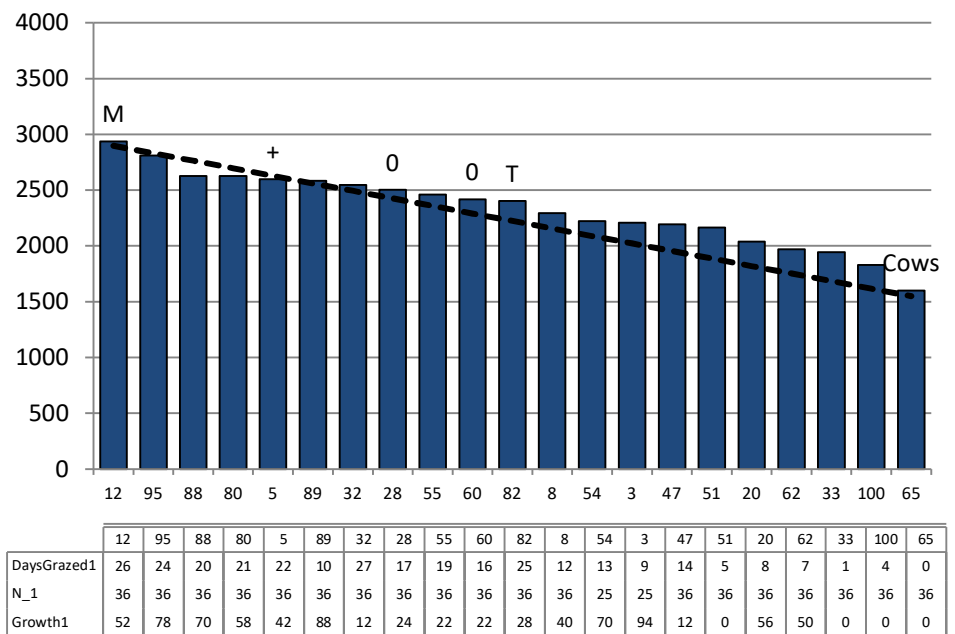


Farmlet notes: Visual APC 2554, GR 60; inshed feeding removed as not hitting residual in the previous 2 pdks; N fertiliser to resume at 30 kg N/ha to all grass pdks, including new grasses; N fertiliser onto crops at canopy closure & italian ryegrass for wintering; last new grass pdk (49) will have nip off grazing this week; bulls removed from herd today

Herd size (cows)	160	Average Cover	2331
Target residual (kg DM/ha)	1550	Average Growth	48
Target pasture intake (kg DM/cow)	16	Farmlet area	61.1
Target Area offered (ha/day)	1.9	Target rotation length	32
Last week rotation avg	36	Target demand	42
Last week supp (kg DM/cow)	2.3	YTD supp (kg DM/cow)	287
Last week N (kg N/ha)	0	Fert N YTD	34
Milk yield	18.4	Effluent N YTD	5
Fat%	N	Last wk MS	W
Prot%	E	YTD MS/cow	E
SCC	X	YTD MS/ha	E
Average BCS	T	% less than BCS 4	K

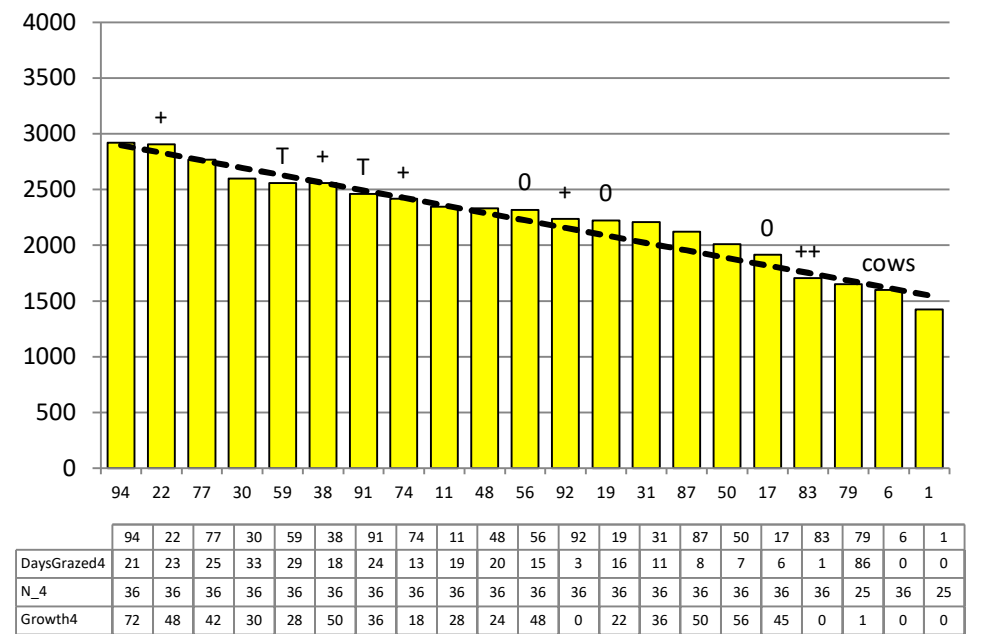
Herd size (cows)	160	Average Cover	2248
Target residual (kg DM/ha)	1550	Average Growth	37
Target pasture intake (kg DM/cow)	16	Farmlet area	61.2
Target Area offered (ha/day)	1.9	Target rotation length	32
Last week rotation avg	37	Target demand	42
Last week supp (kg DM/cow)	1.4	YTD supp (kg DM/cow)	270
Last week N (kg N/ha)	0	Fert N YTD	34
Milk yield	17.7	Effluent N YTD	7
Fat%	N	Last wk MS	W
Prot%	E	YTD MS/cow	E
SCC	X	YTD MS/ha	E
Average BCS	T	% less than BCS 4	K

Low Impact Kale



Farmlet notes: Visual APC 2339, GR 57; inshed feeding reduced to 1 kg DM/cow/day as 70:30 PKE barley blend as not hitting residual at the higher allocation; N fertiliser to be applied to all new grass pdks at 25 kg N/ha; N fertiliser onto crops at canopy closure & italian ryegrass for wintering; bulls removed from herd today; all new grass pdks back in rotation

Low Impact Fodder Beet



Farmlet notes: Visual APC 2364, GR 42; continue with inshed feeding of 1 kg DM/cow/day PKE but revisit in the next few days and remove if cows not hitting residual; N fertiliser to be applied to all new grass pdks at 25 kg N/ha; N fertiliser onto crops at canopy closure & italian ryegrass for wintering; bulls removed from herd today; pdk 1 due for grazing this wk